



**UNITED NATIONS  
UNIVERSITY**

GEOTHERMAL TRAINING PROGRAMME  
Orkustofnun, Grensasvegur 9,  
IS-108 Reykjavik, Iceland

Report 2012  
Number 35

APPENDICES TO THE REPORT:  
**1D JOINT INVERSION OF TEM AND MT RESISTIVITY DATA WITH  
AN APPLICATION OF SOUNDINGS FROM THE NÁMAFJALL  
HIGH-TEMPERATURE GEOTHERMAL AREA, NE-ICELAND**

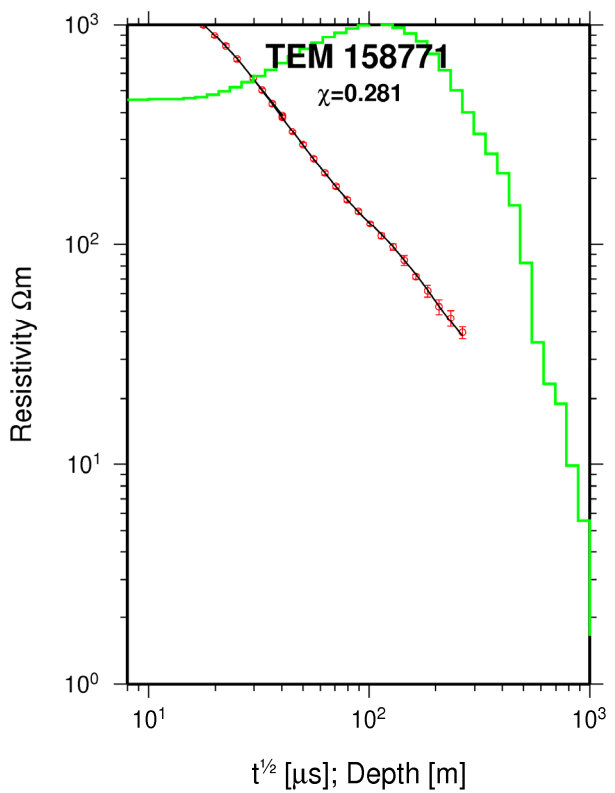
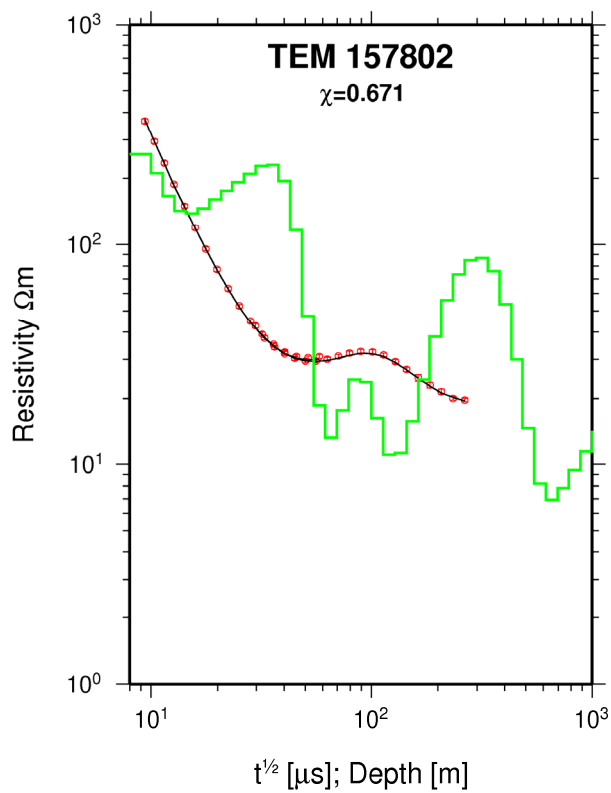
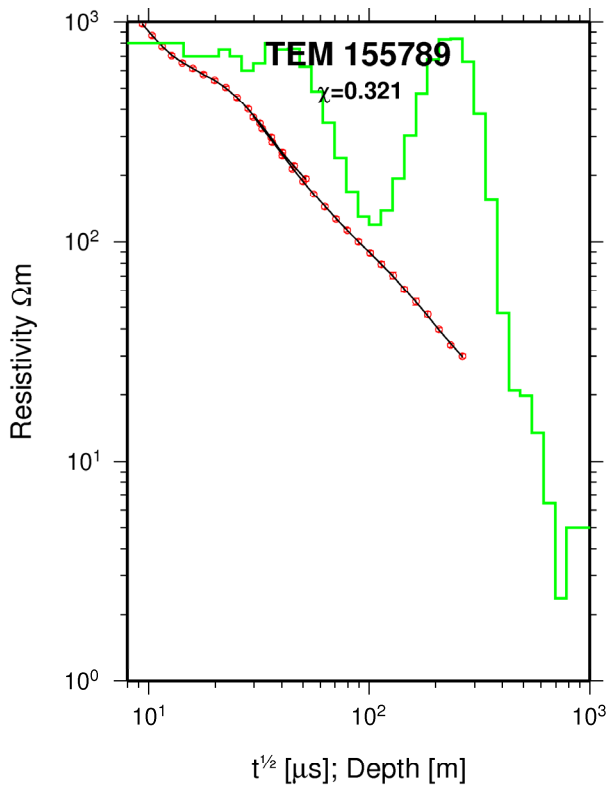
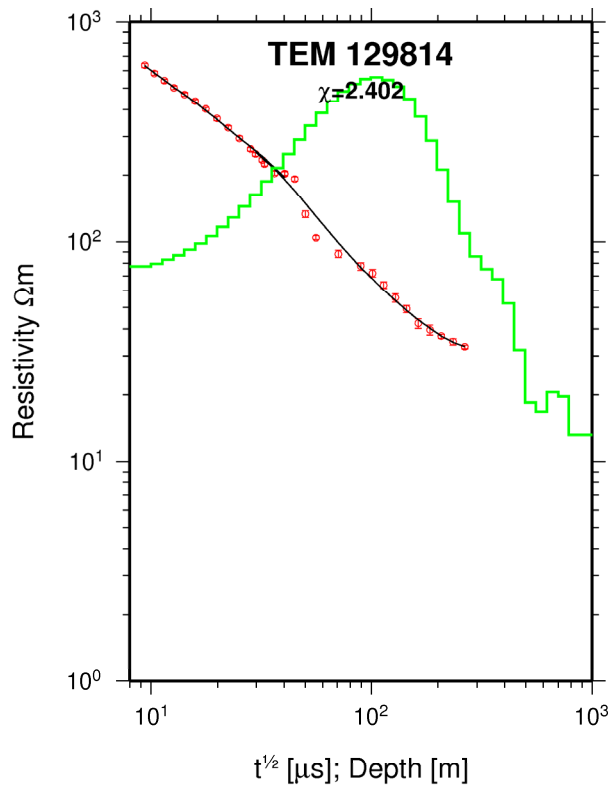
by

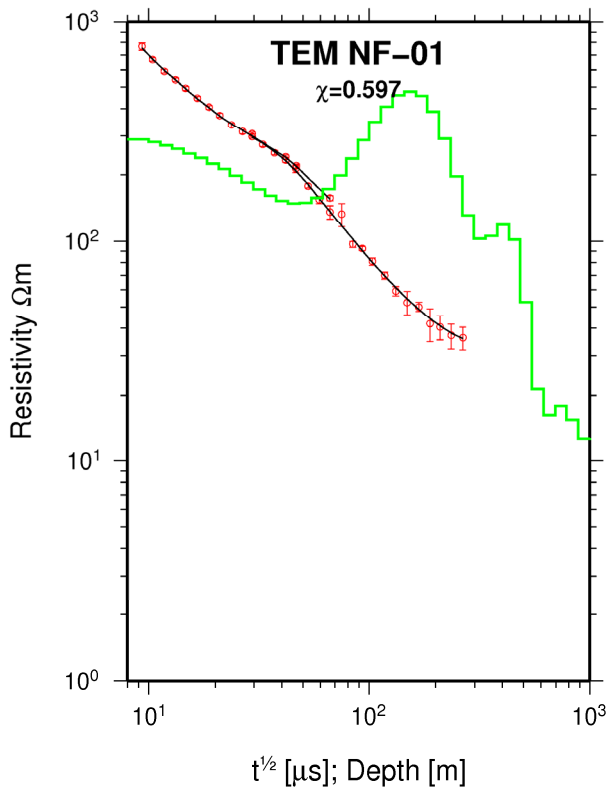
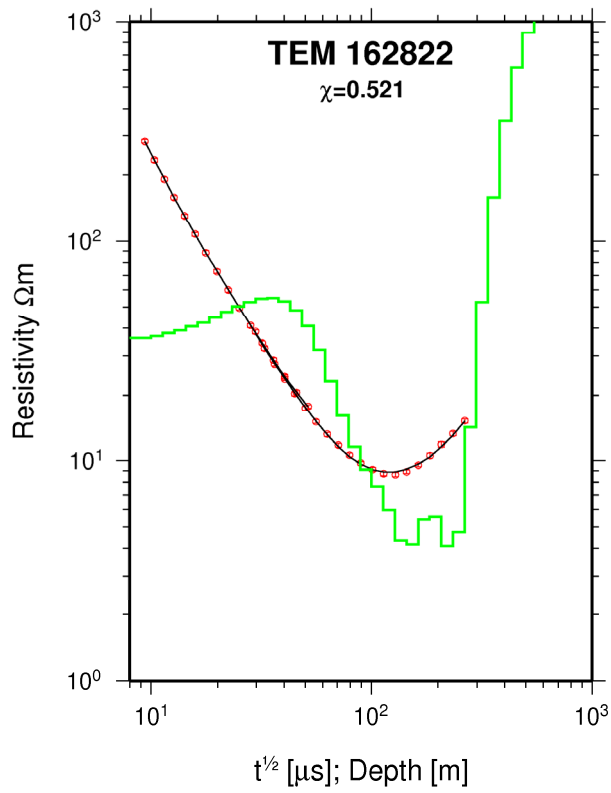
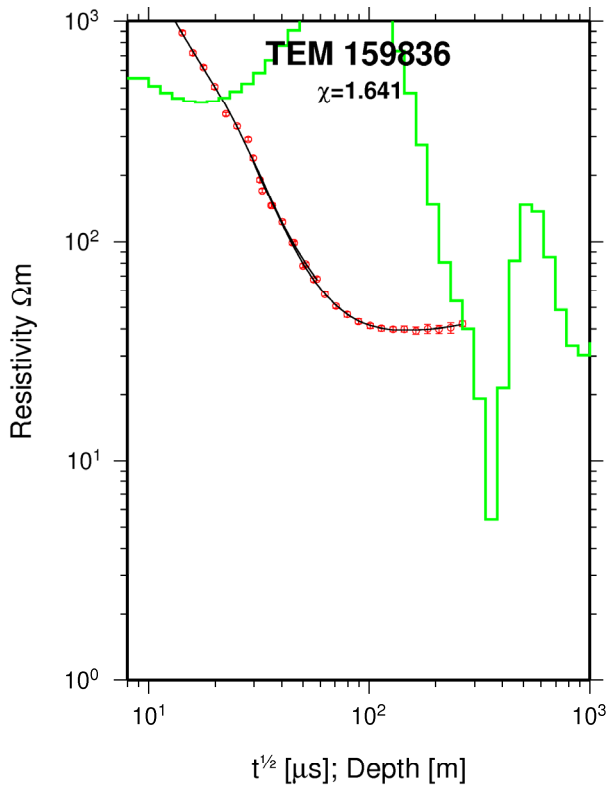
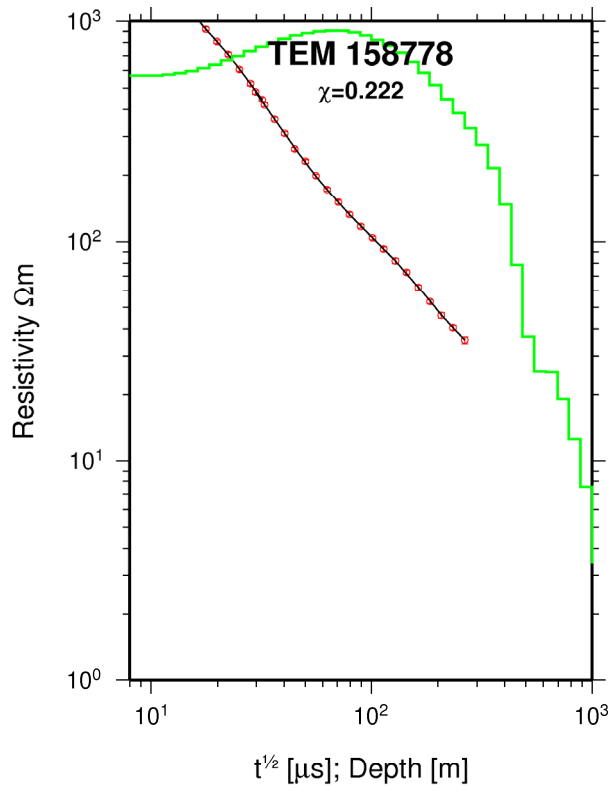
**Mohammad Zohir Uddin**  
Geological Survey of Bangladesh  
153, Pioneer Road, Segunbagicha  
Dhaka 1000  
BANGLADESH  
*zohir.uddin@gmail.com*

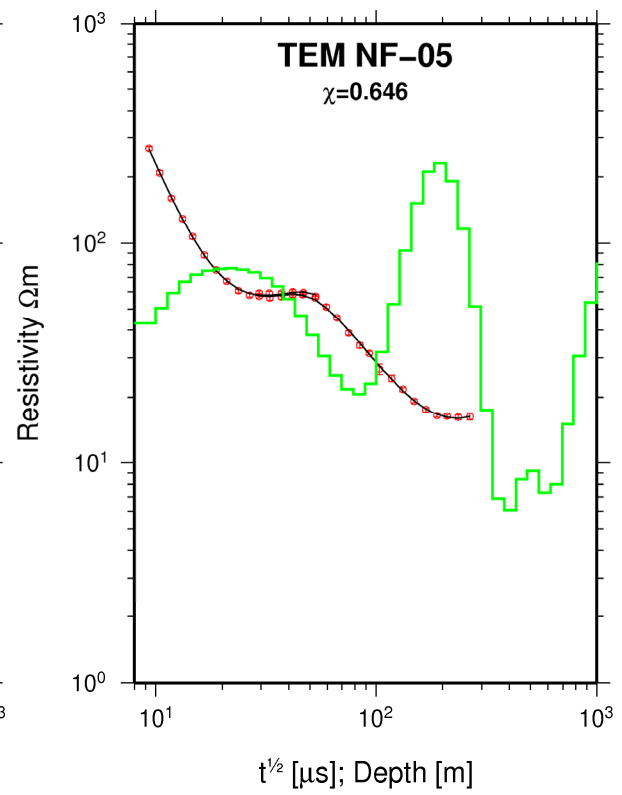
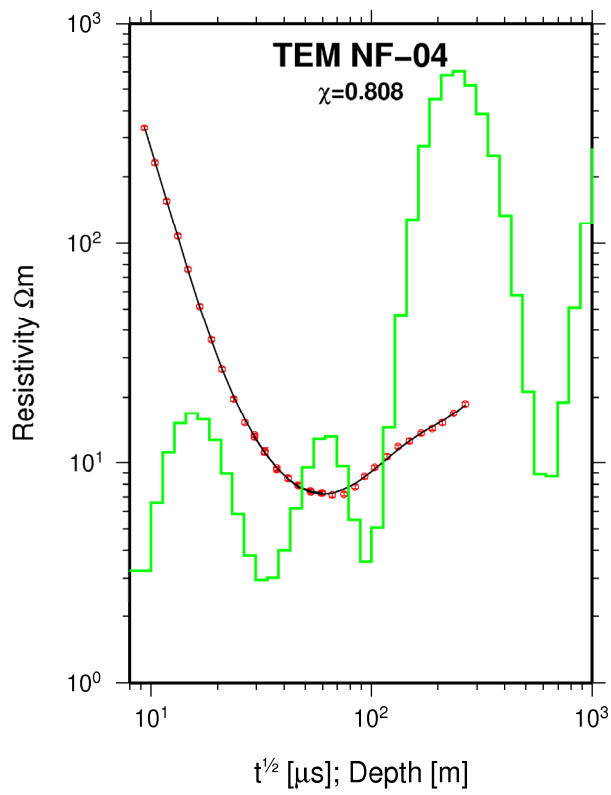
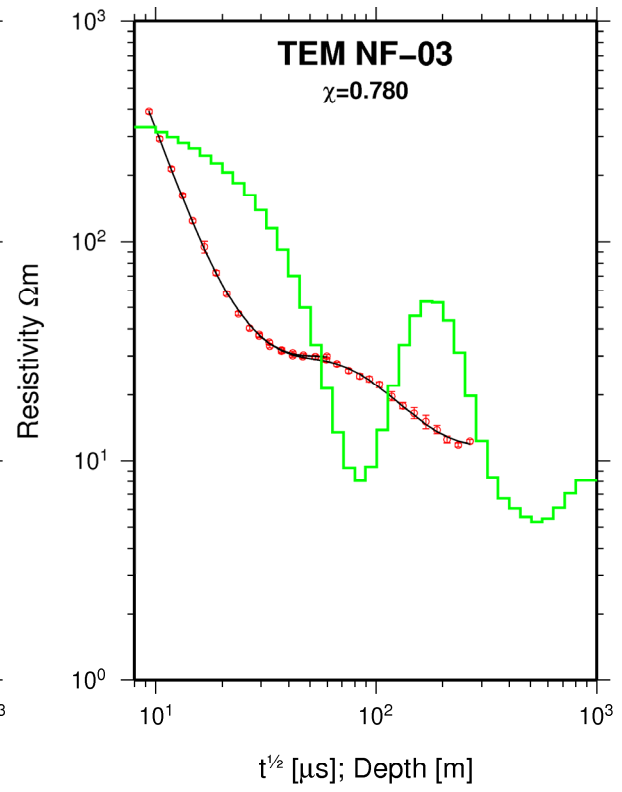
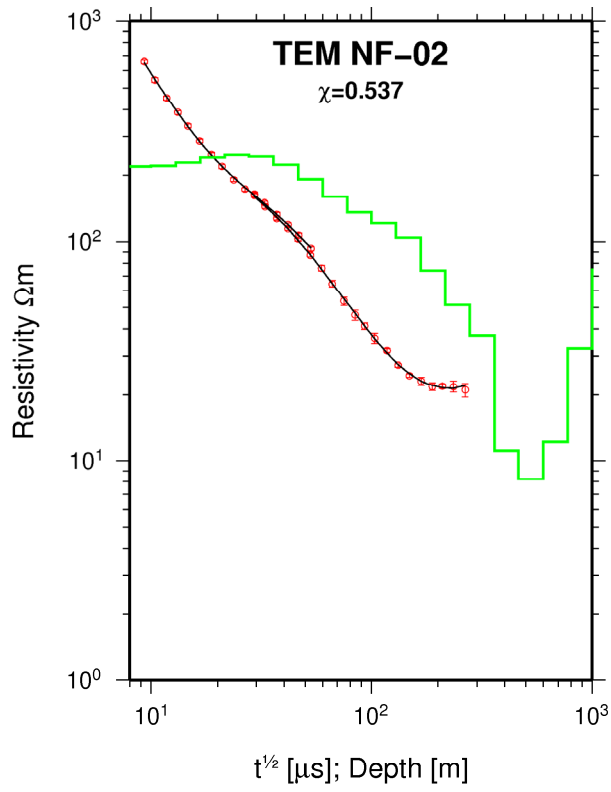
United Nations University  
Geothermal Training Programme  
Reykjavik, Iceland  
Published in 2012

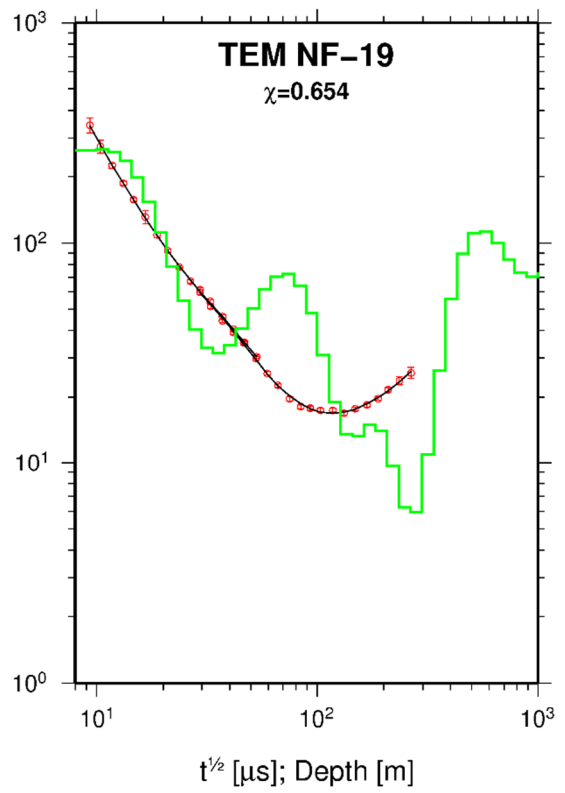
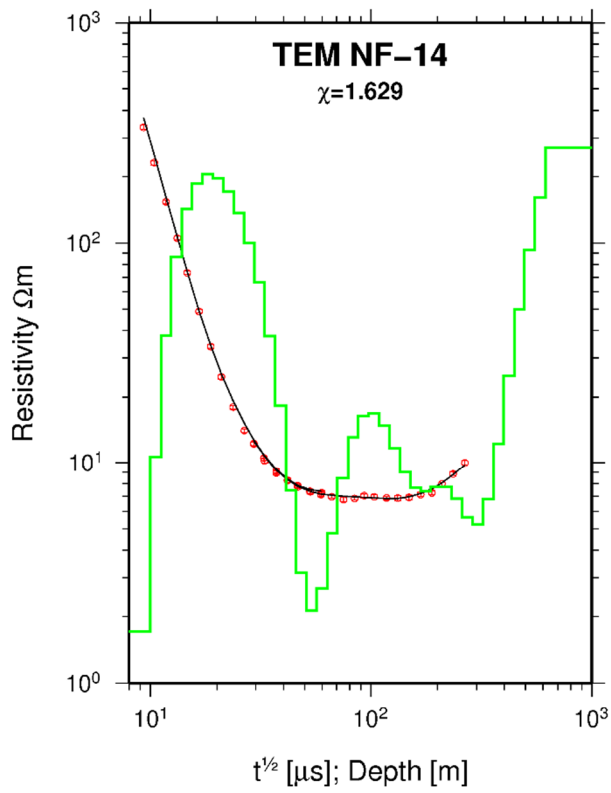
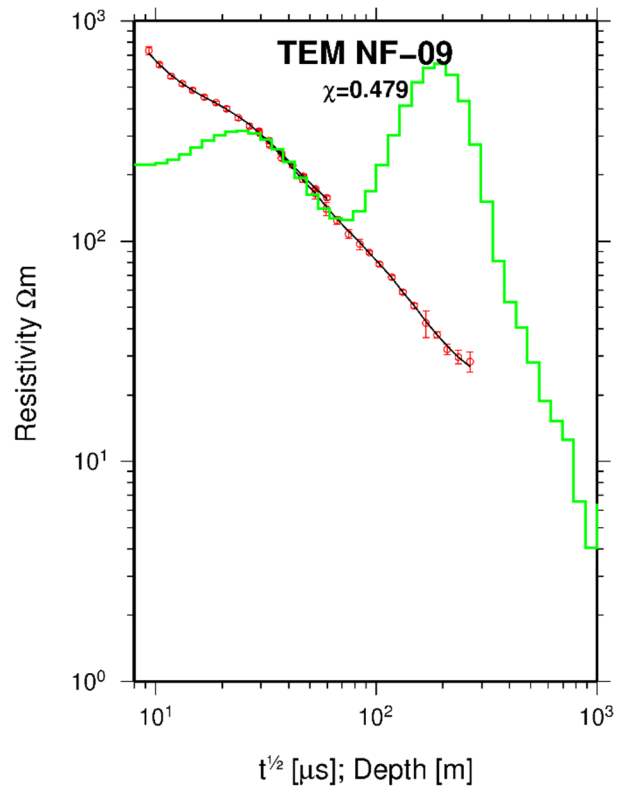
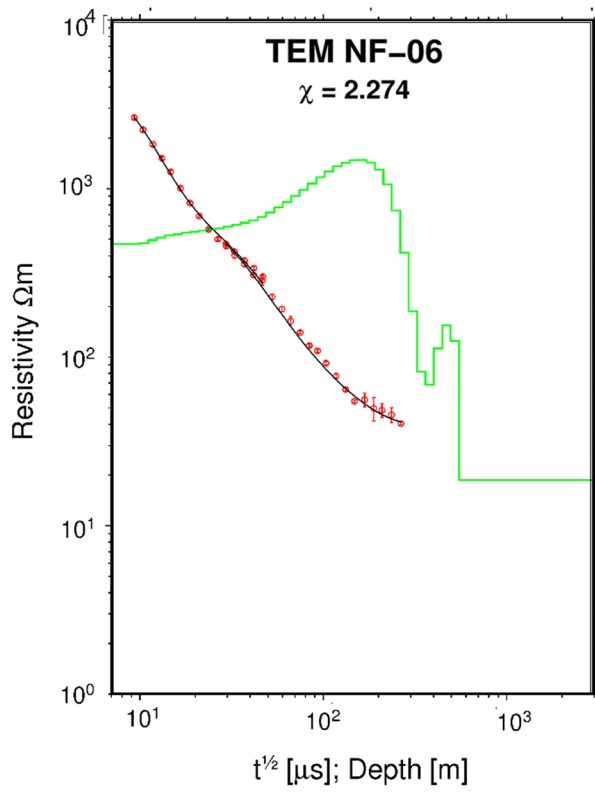
These are appendices to the report “*1D joint inversion of TEM and MT resistivity data, with an application of soundings from the Námafjall high-temperature geothermal area, NE-Iceland*” by Mohammad Zohir Uddin at the UNU Geothermal Training Programme in 2012. Appendix I shows TEM data from the Námafjall high-temperature area and Occam inversion of the data. Appendix II shows processed data for all the Námafjall MT soundings with various MT parameters extracted from edi files. Appendix III shows TEM and MT joint inverted resistivity data from the Námafjall high-temperature area and corresponding model curves.

**Appendix I: TEM Data from the Námafjall high-temperature area and Occam inversion of the data**

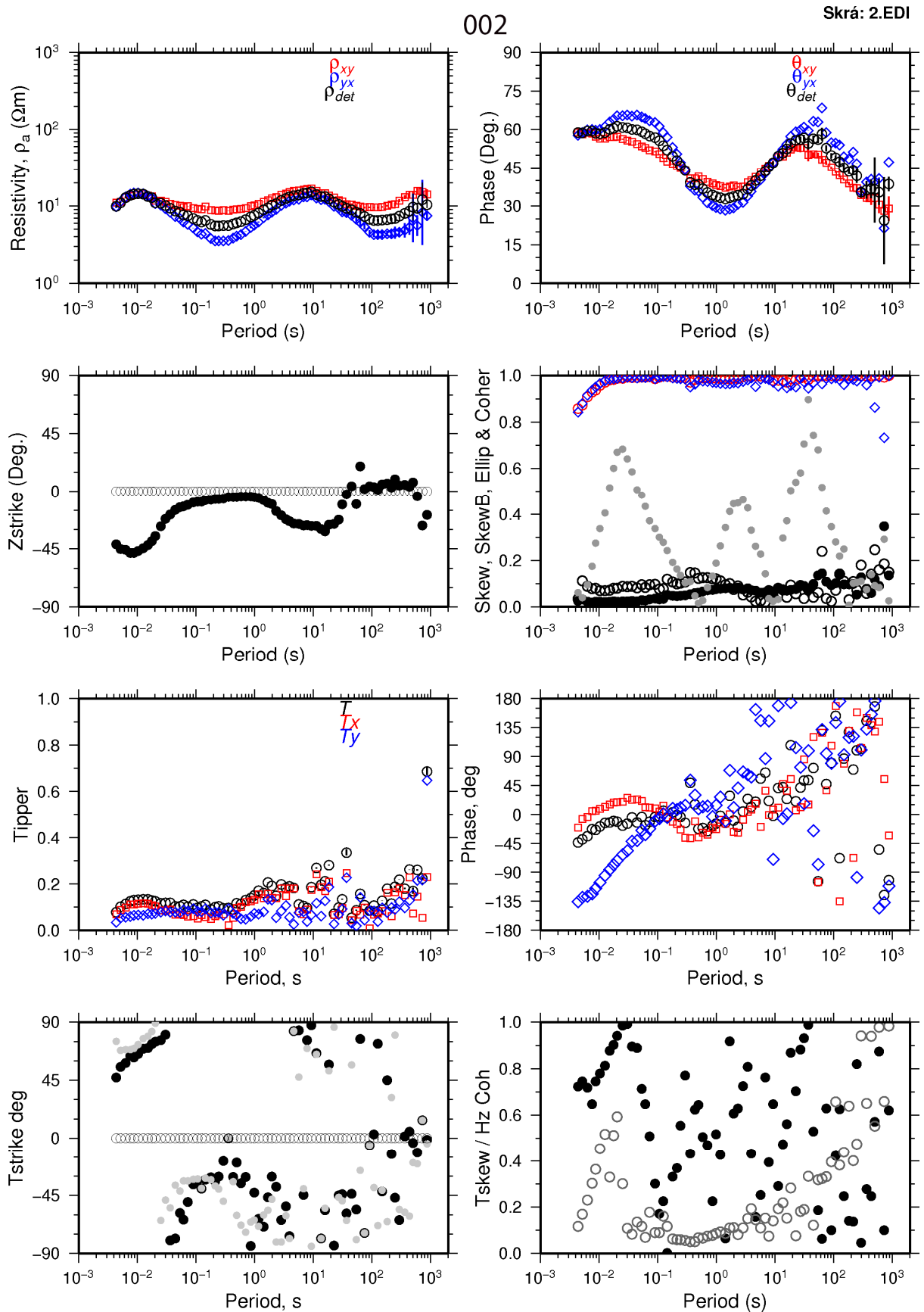






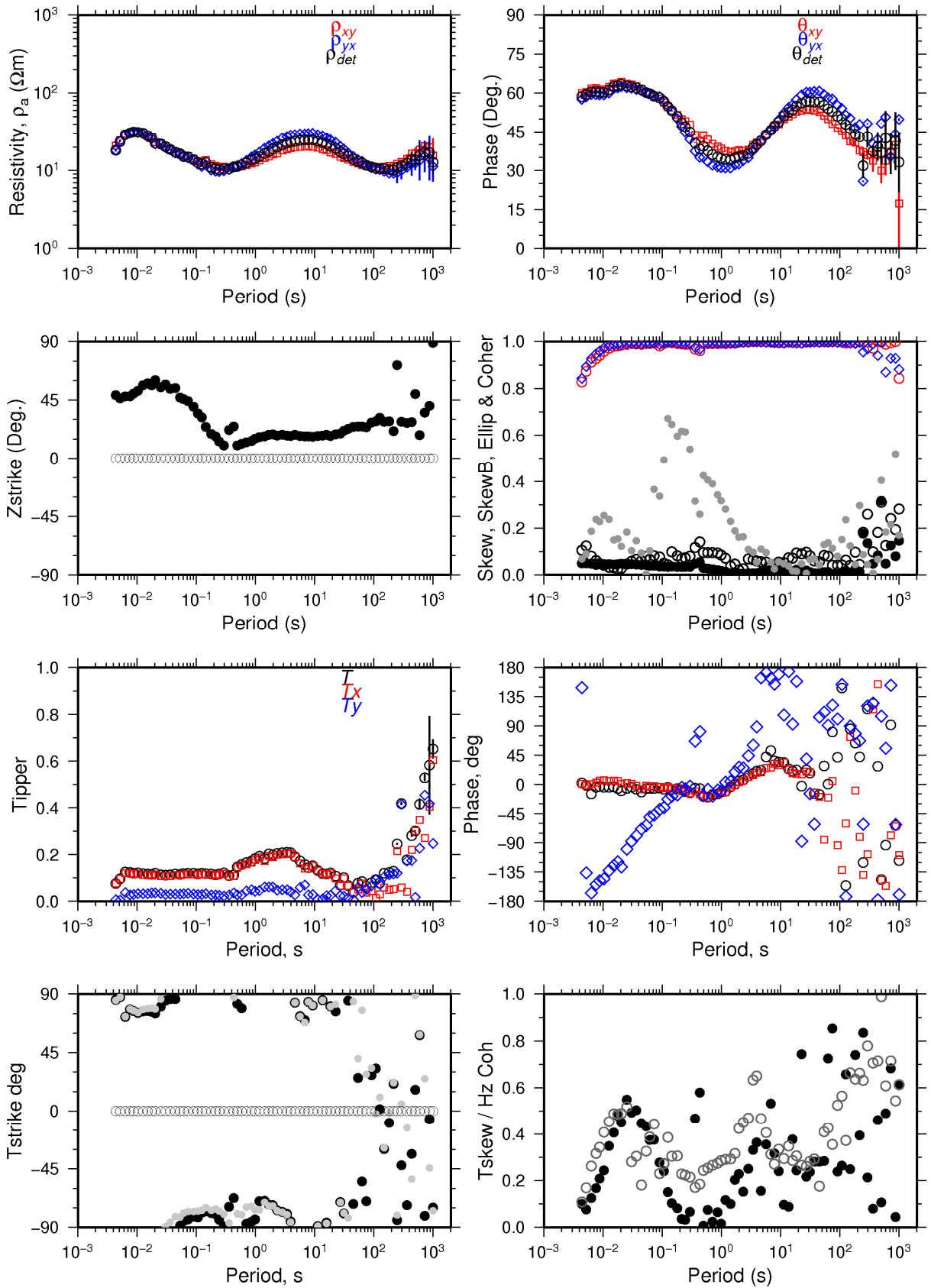


**APPENDIX II: Processed data for the Námaffjall MT soundings  
with various MT parameters extracted from EDI files**



003

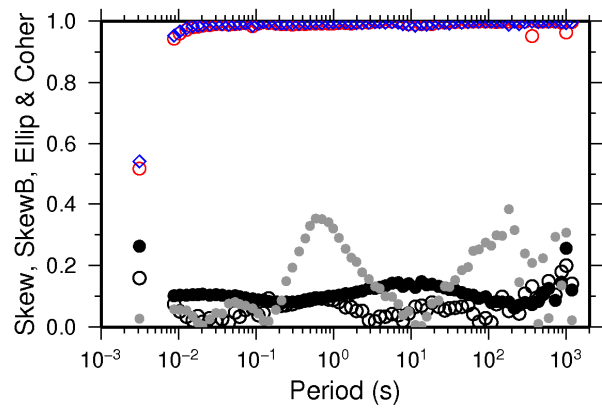
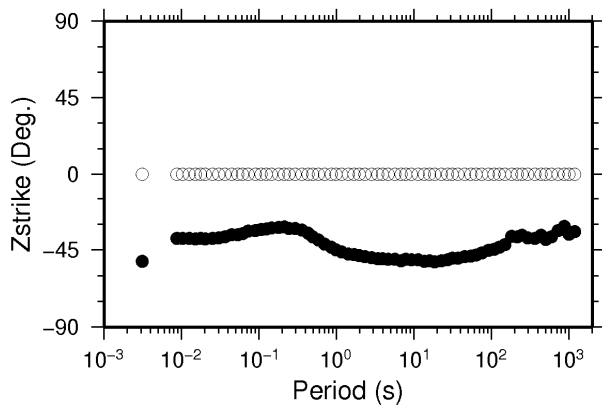
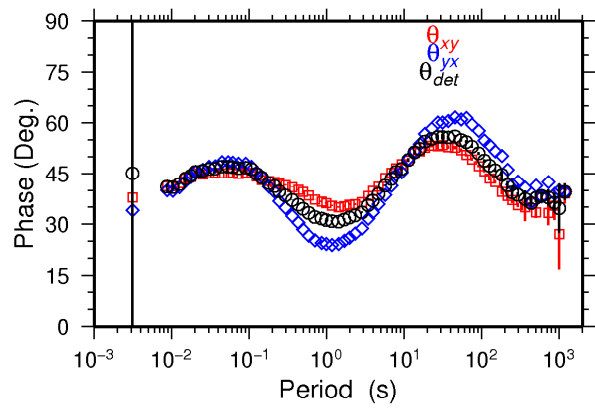
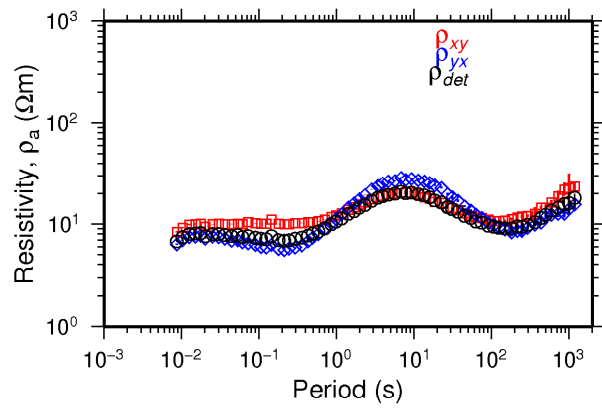
Skrá: 3.EDI





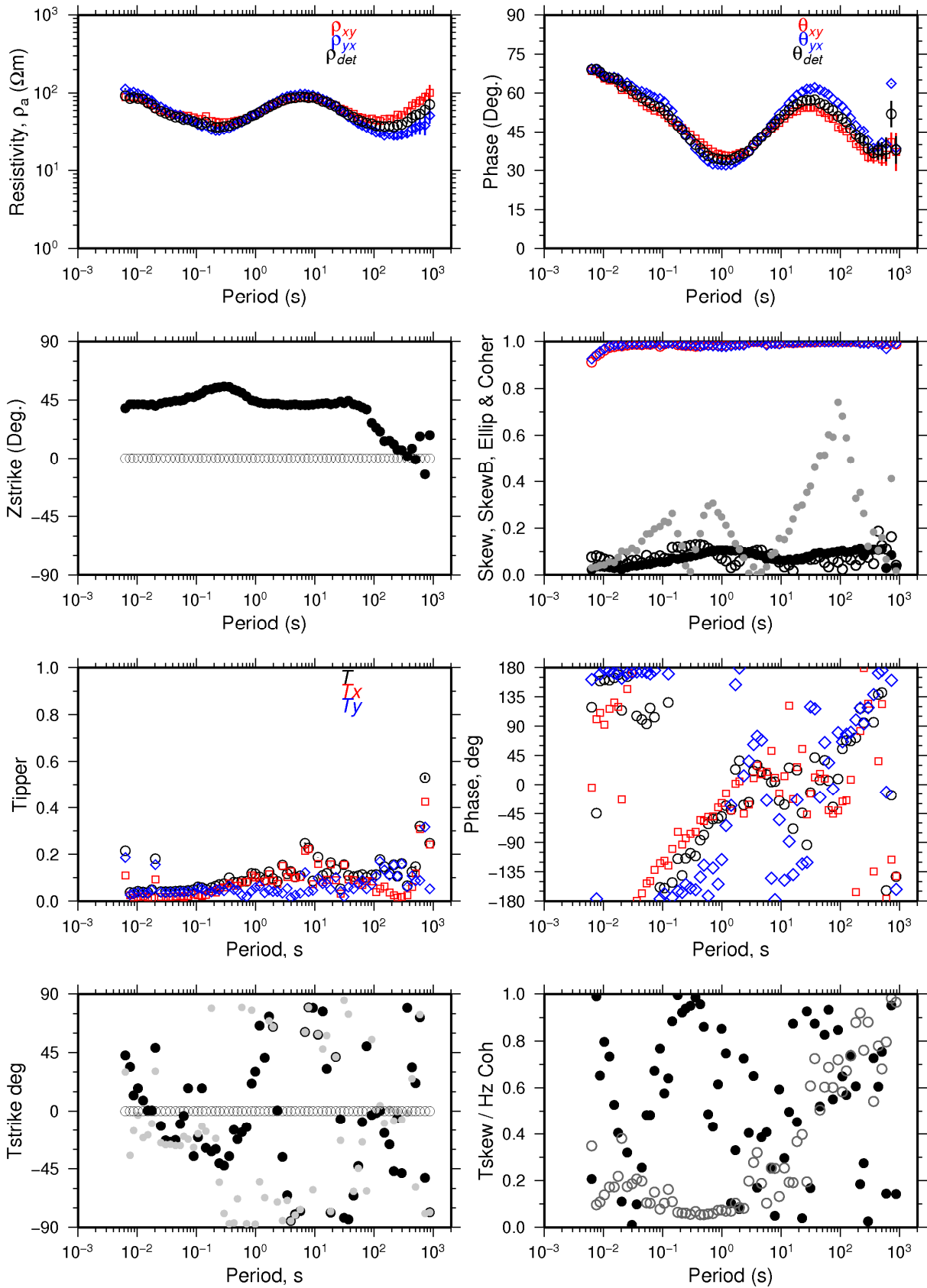
004

Skrá: 4.EDI



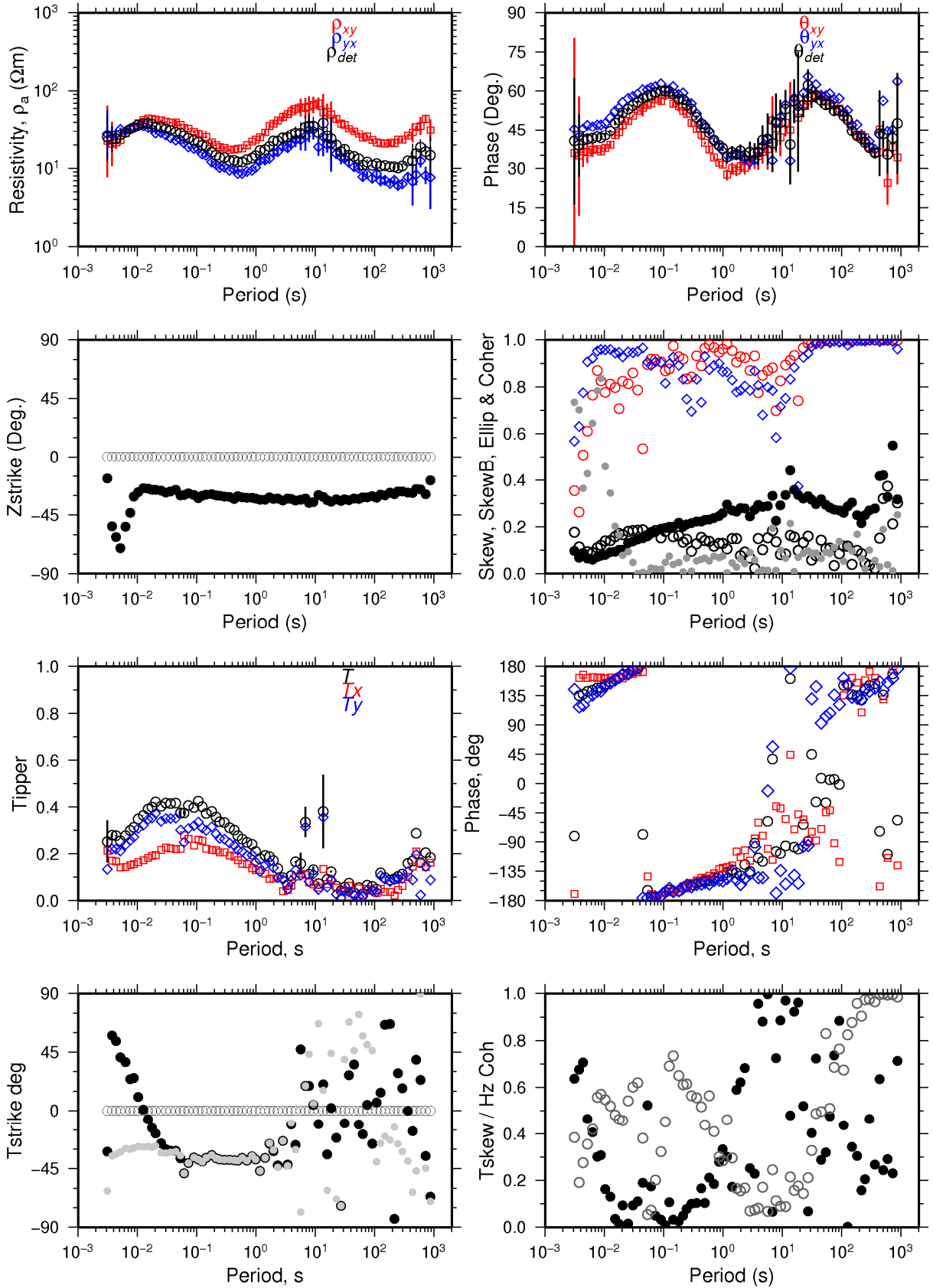
006

Skrá: 6.EDI



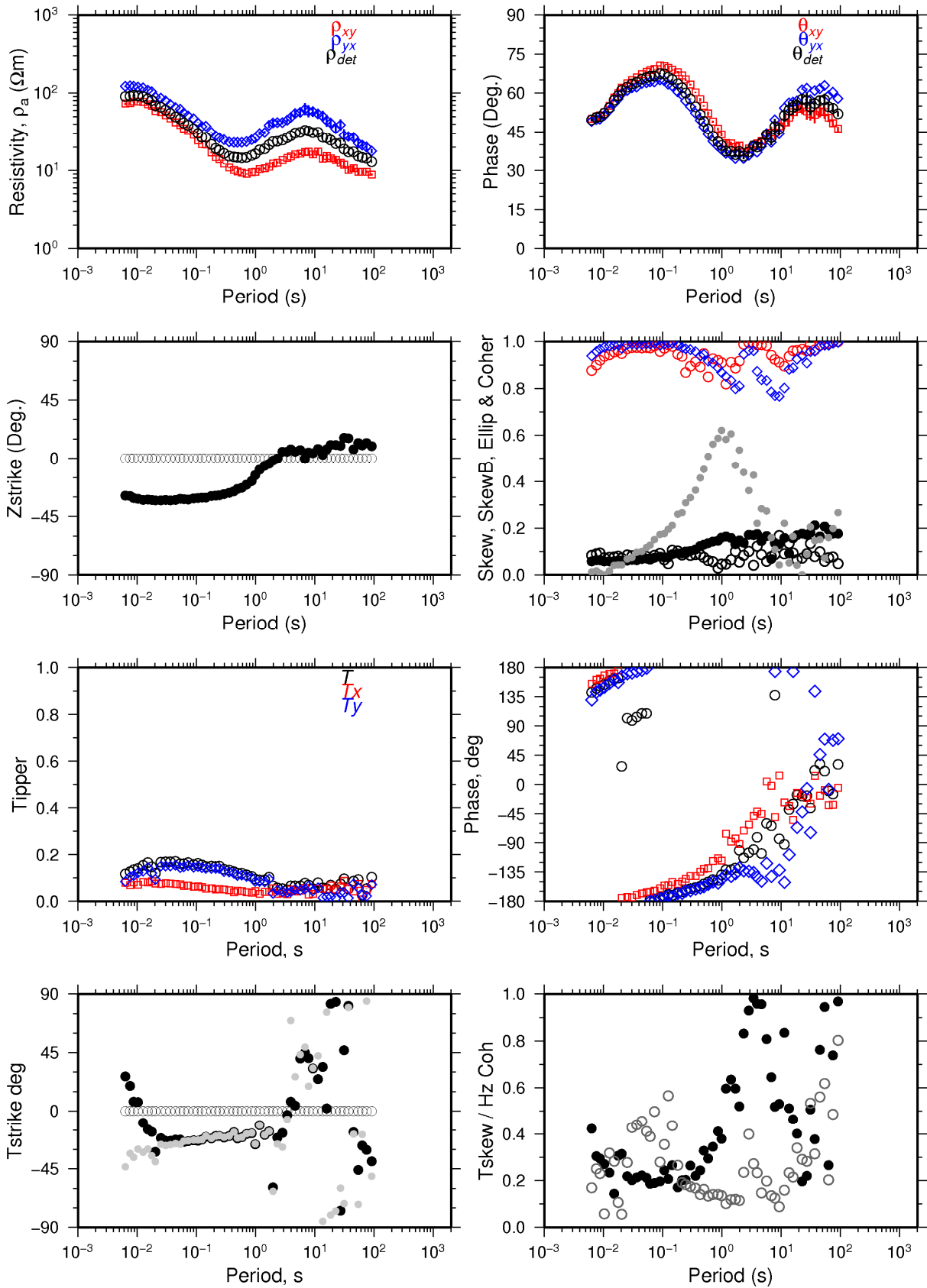
010

Skrá: 10.EDI



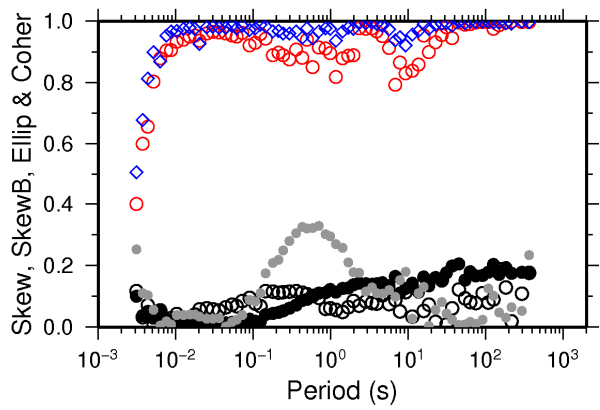
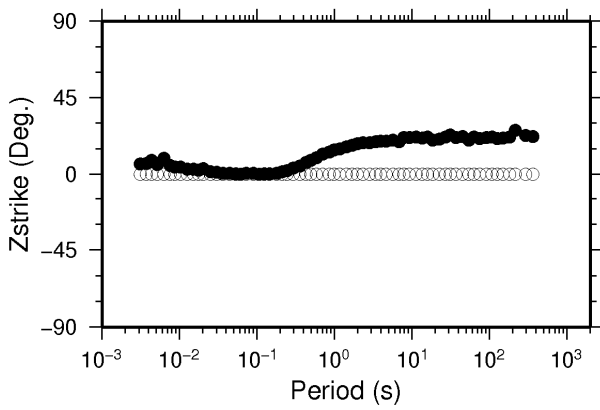
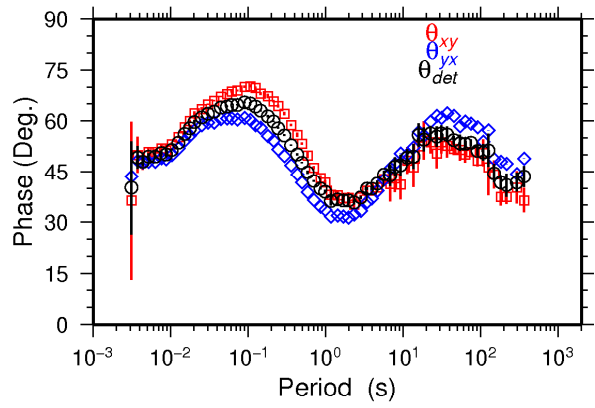
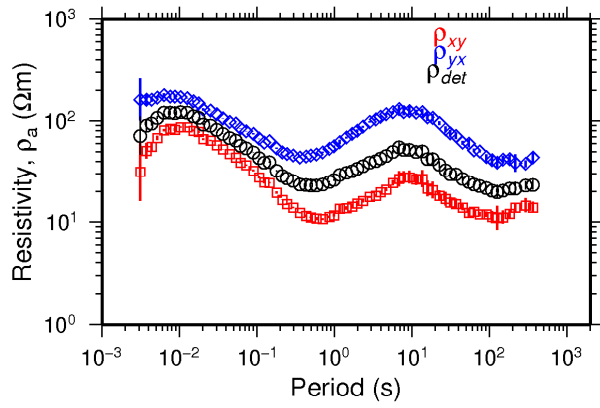
011

Skrá: 11.EDI



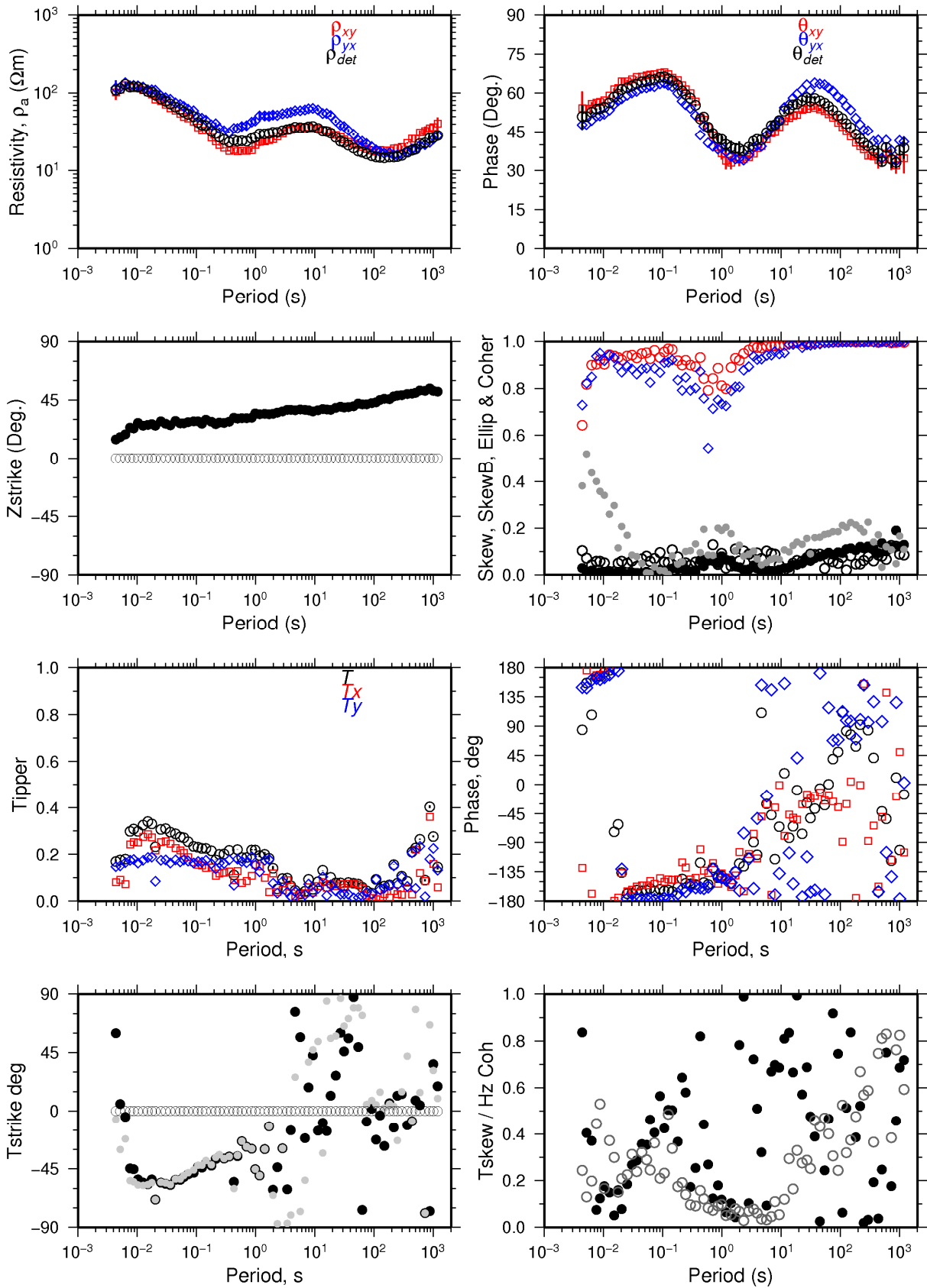
012

Skrá: 12.EDI



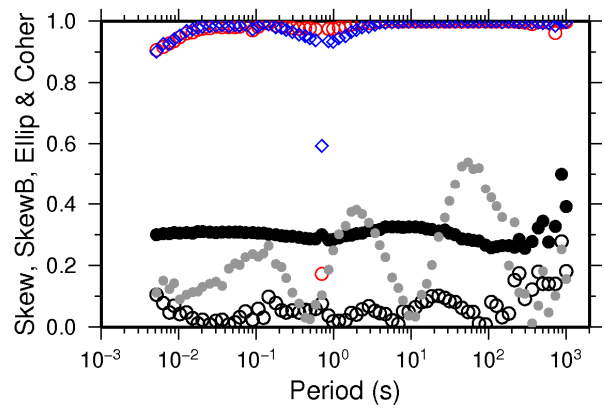
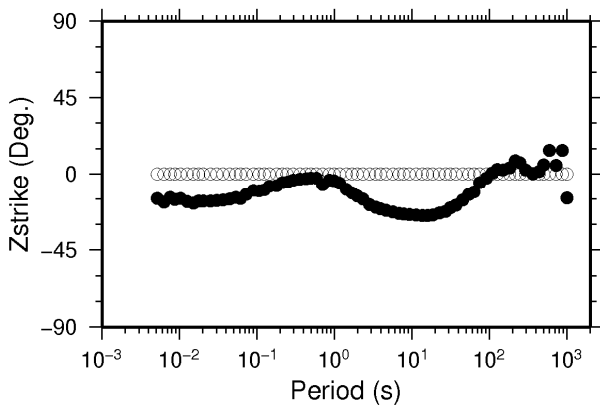
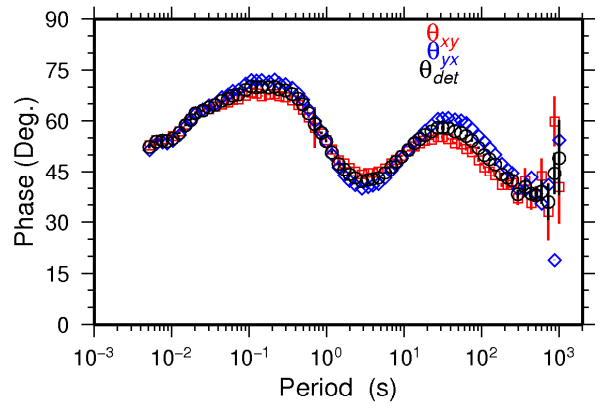
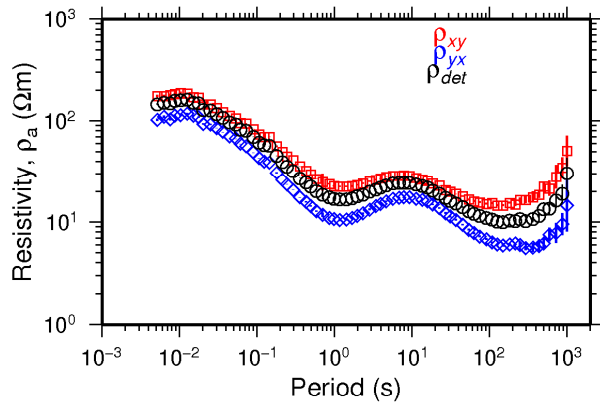
013

Skrá: 13.EDI



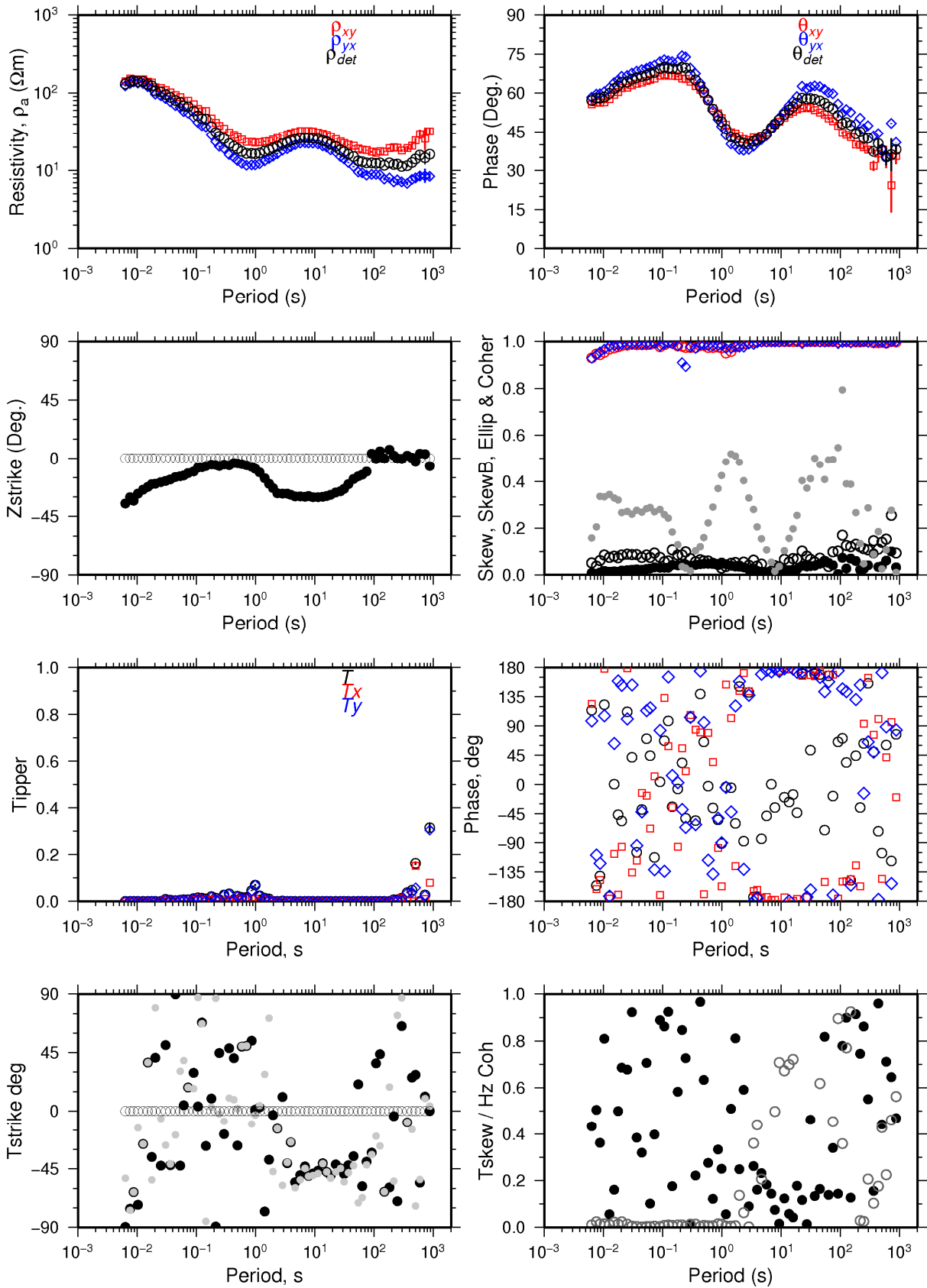
021

Skrá: 21.EDI



023

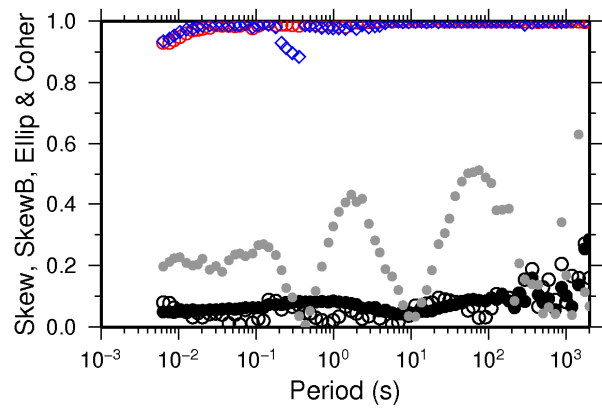
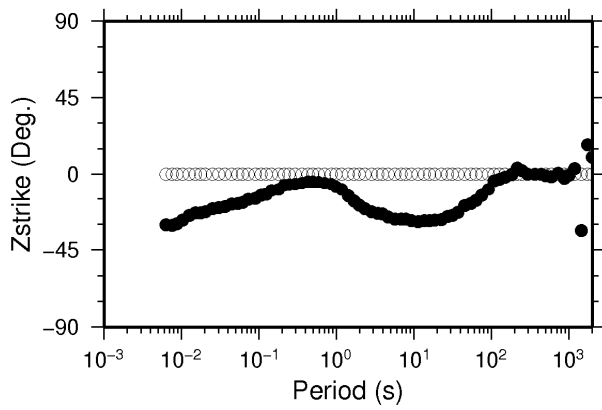
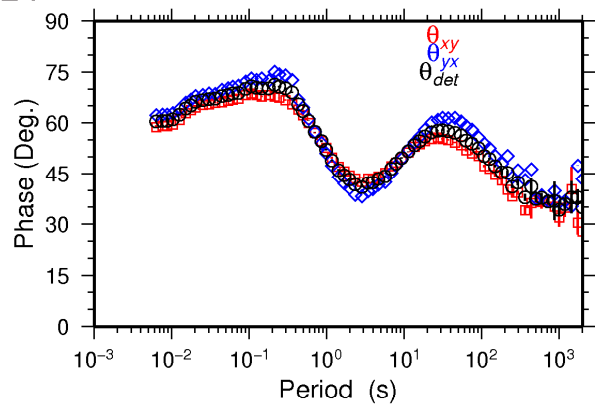
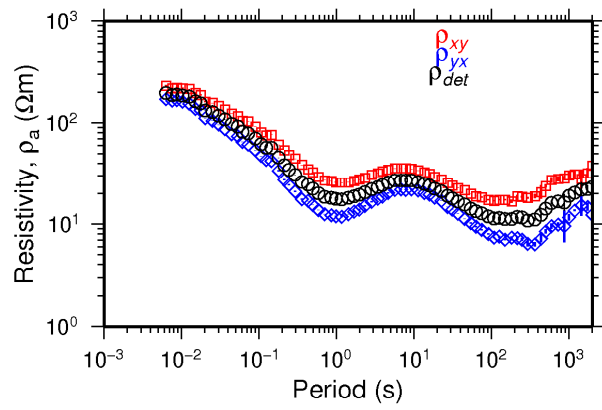
Skrá: 23.EDI





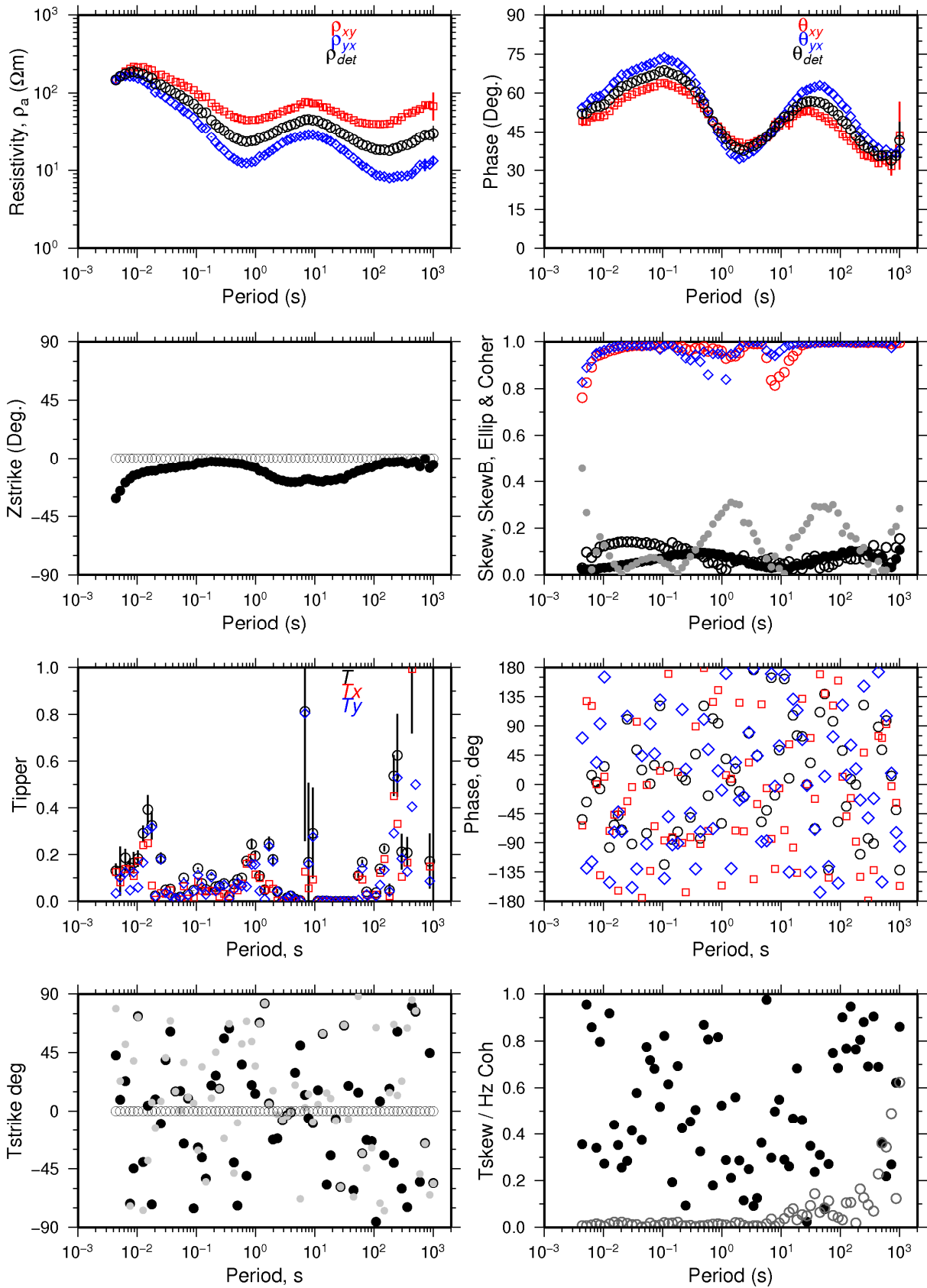
024

Skrá: 24.EDI



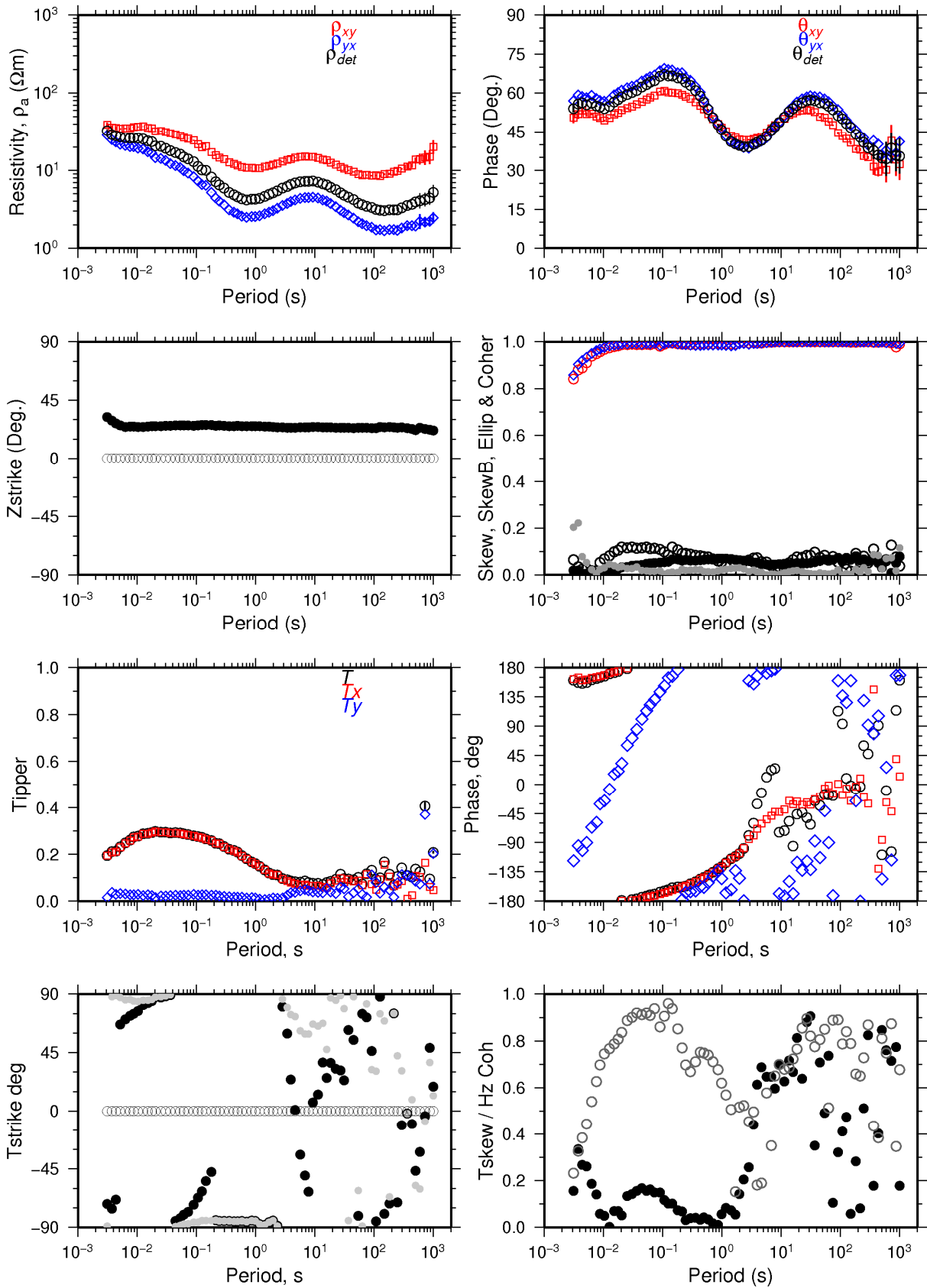
027

Skrá: 27.EDI



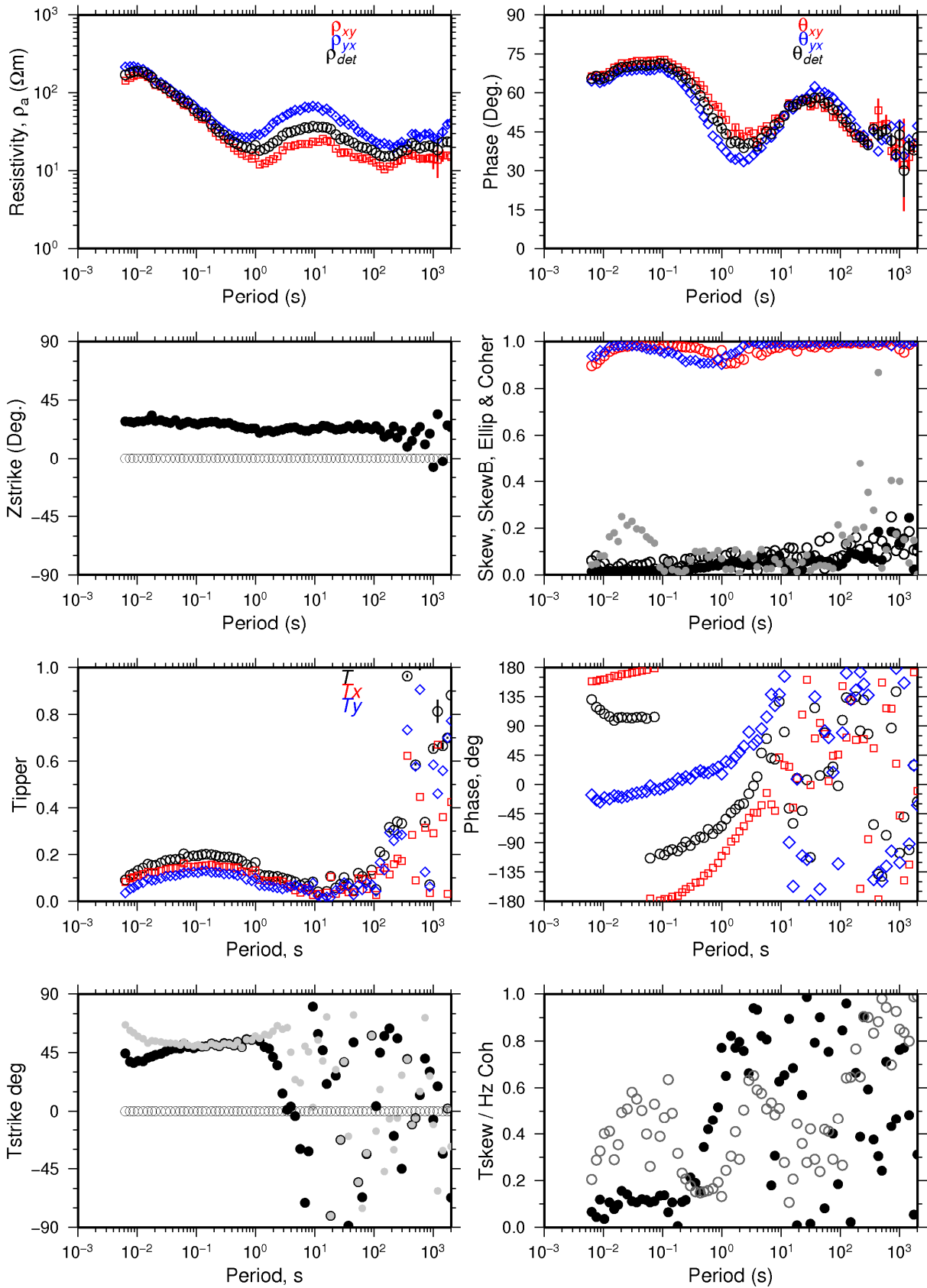
031

Skrá: 31.EDI



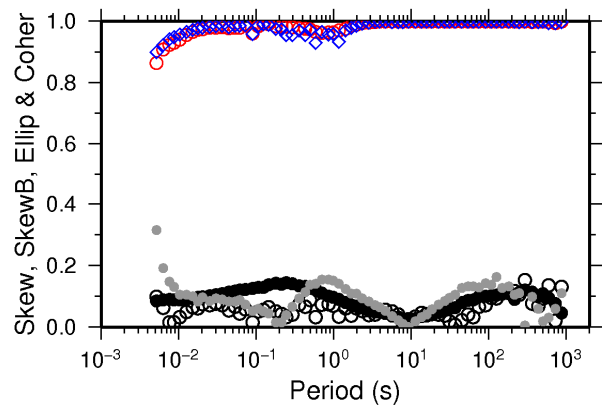
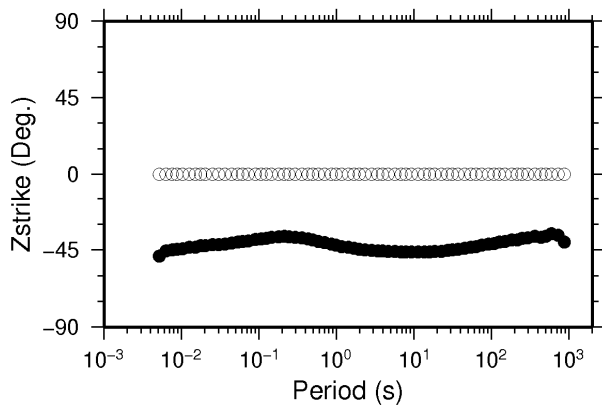
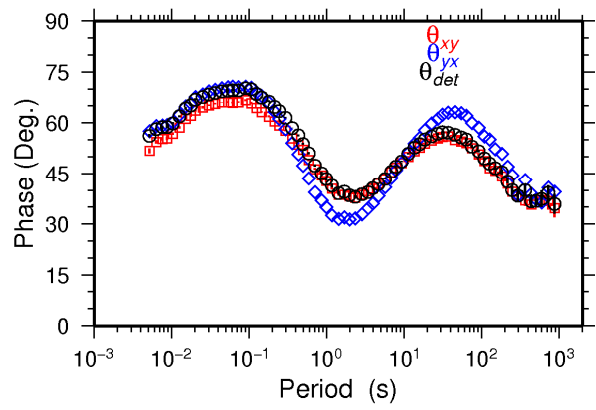
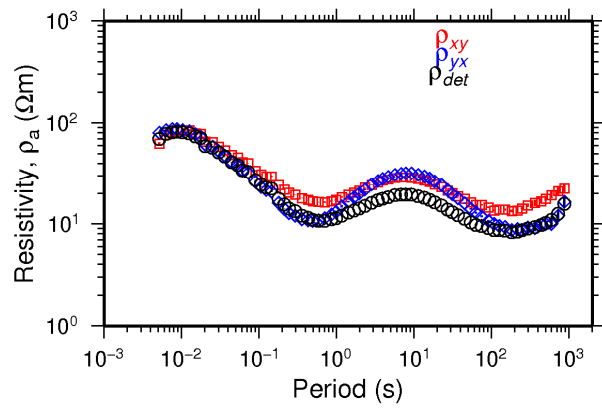
108

Skrá: 108.EDI



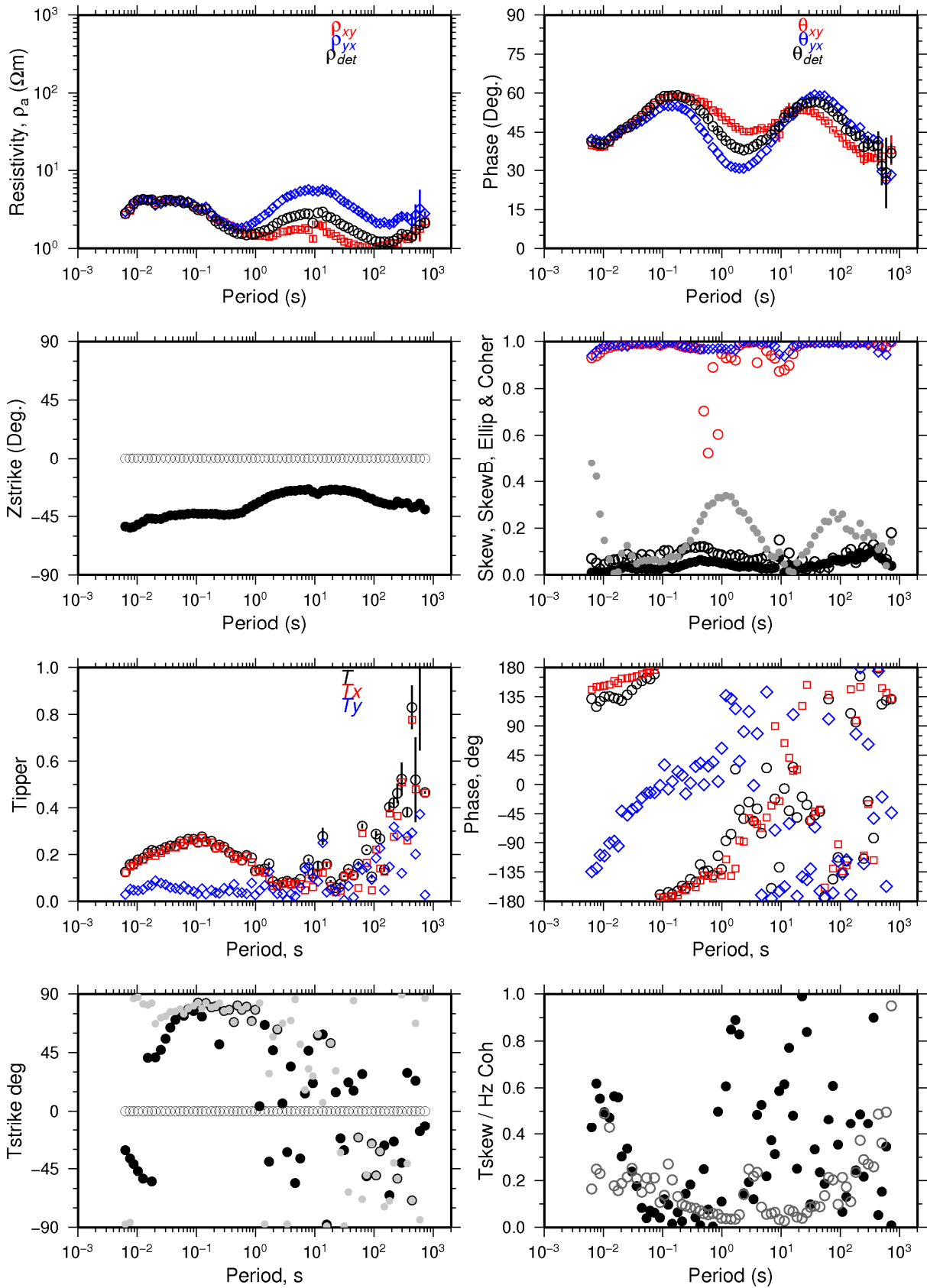
125

Skrá: 125.EDI



132

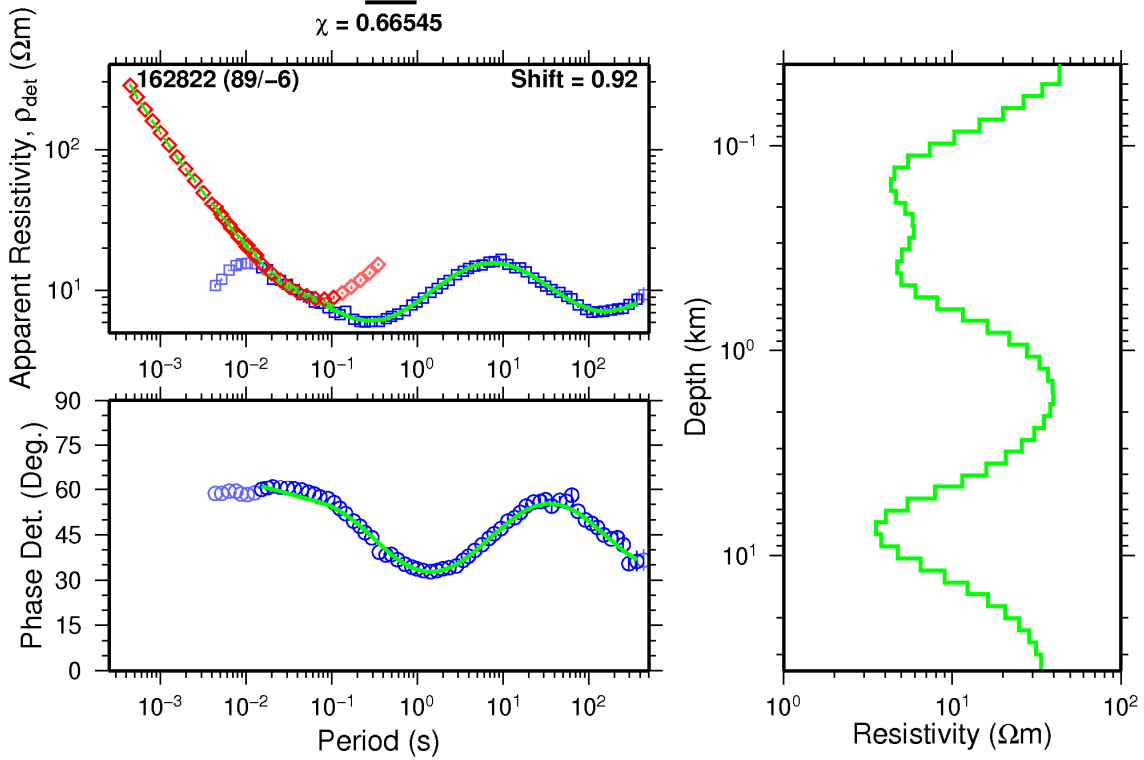
Skrá: NAM.EDI



APPENDIX III: TEM and MT joint inverted resistivity data from the Námafjall high-temperature area and corresponding model curves

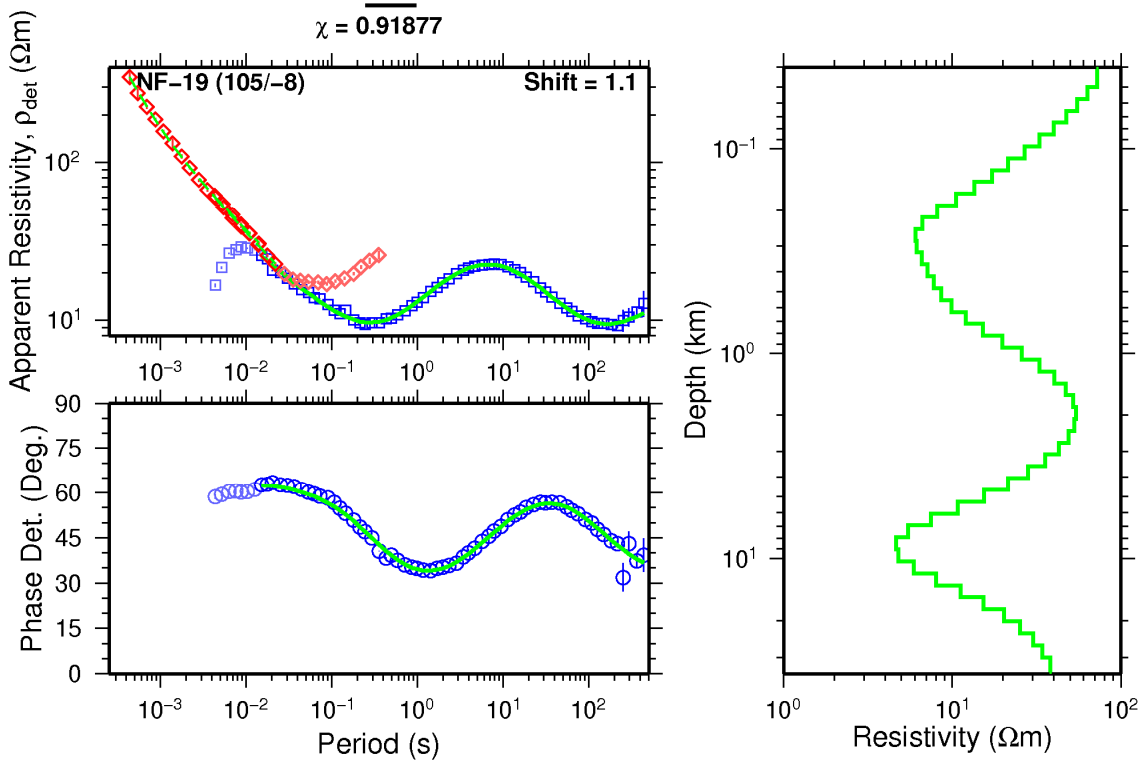
# 002\_out

$\chi = 0.66545$



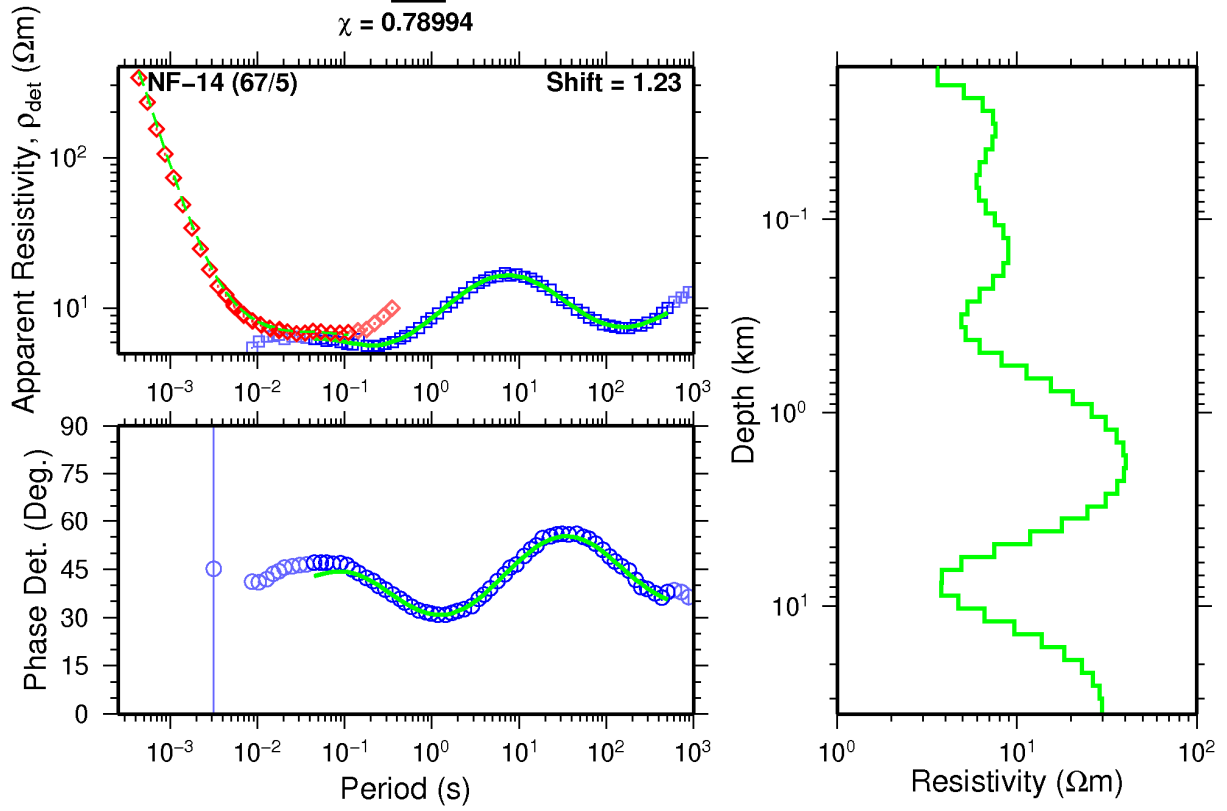
# 003\_out

$\chi = 0.91877$



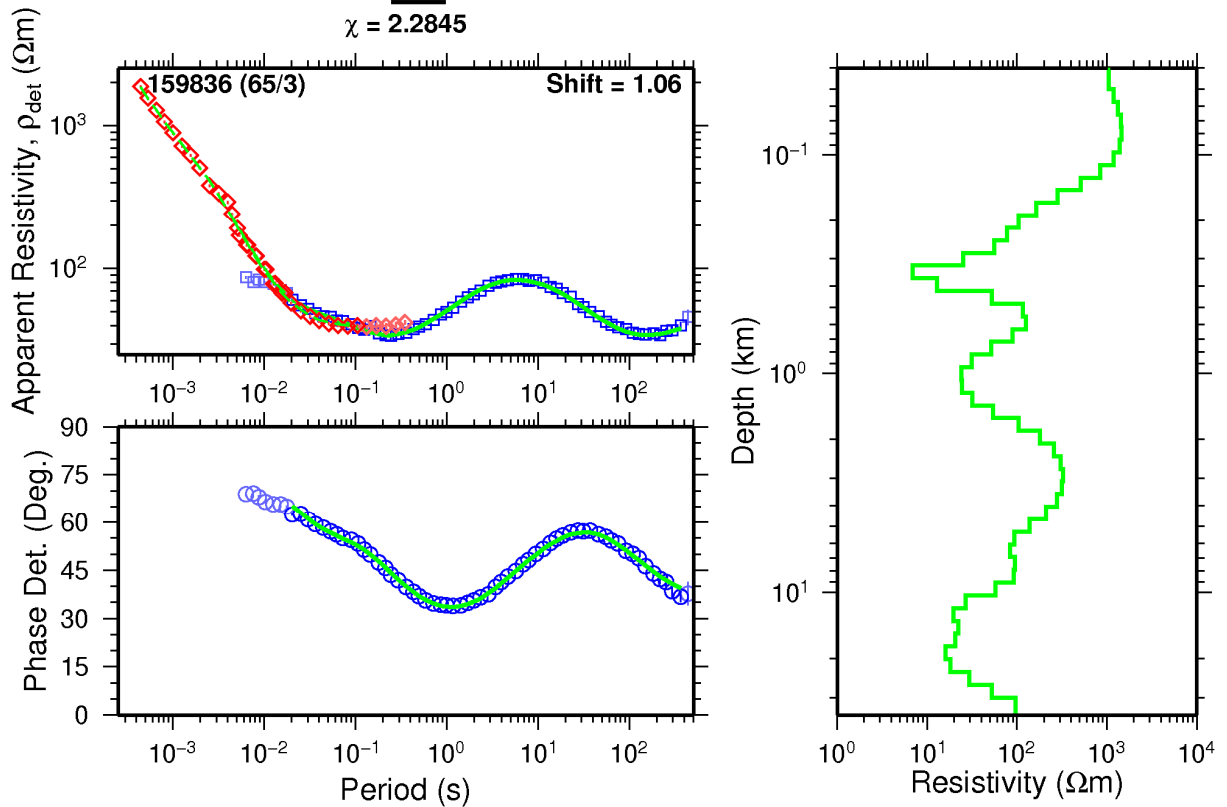
# 004\_out

$\chi = 0.78994$



# 006\_out

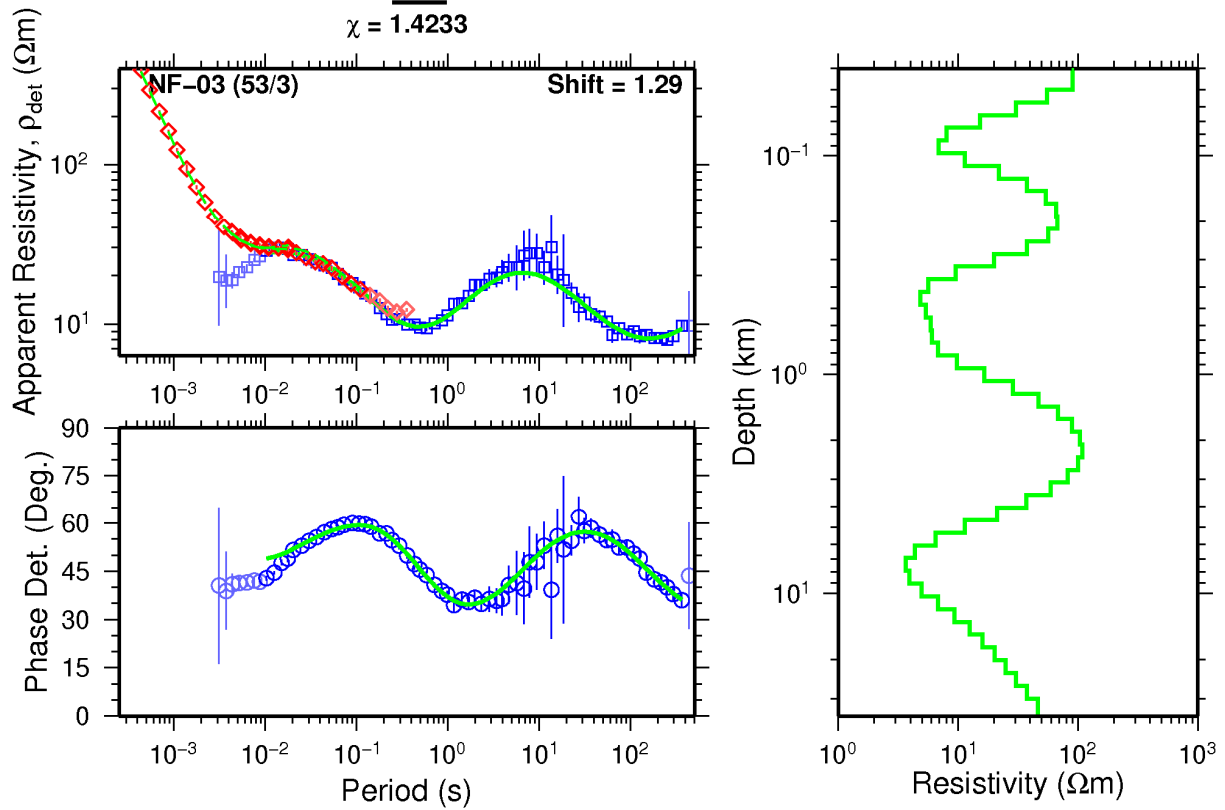
$\chi = 2.2845$





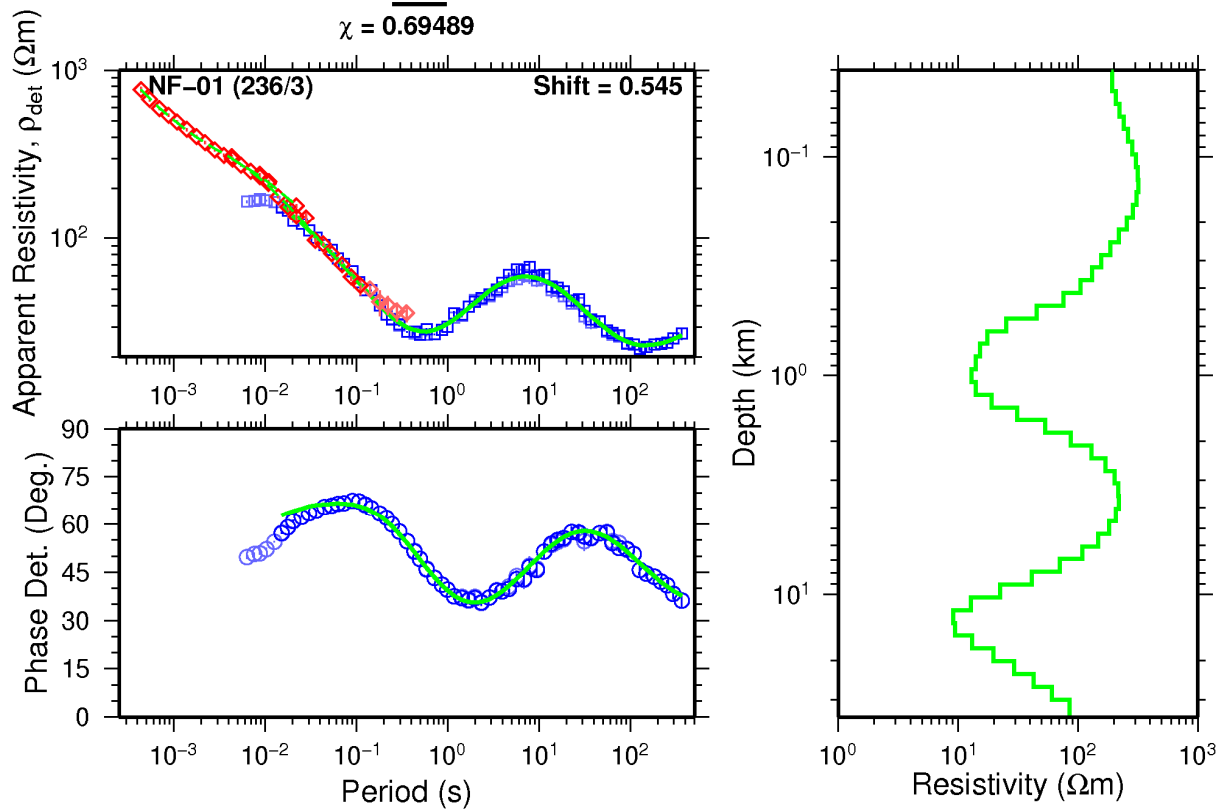
# 010\_out

$\chi = 1.4233$



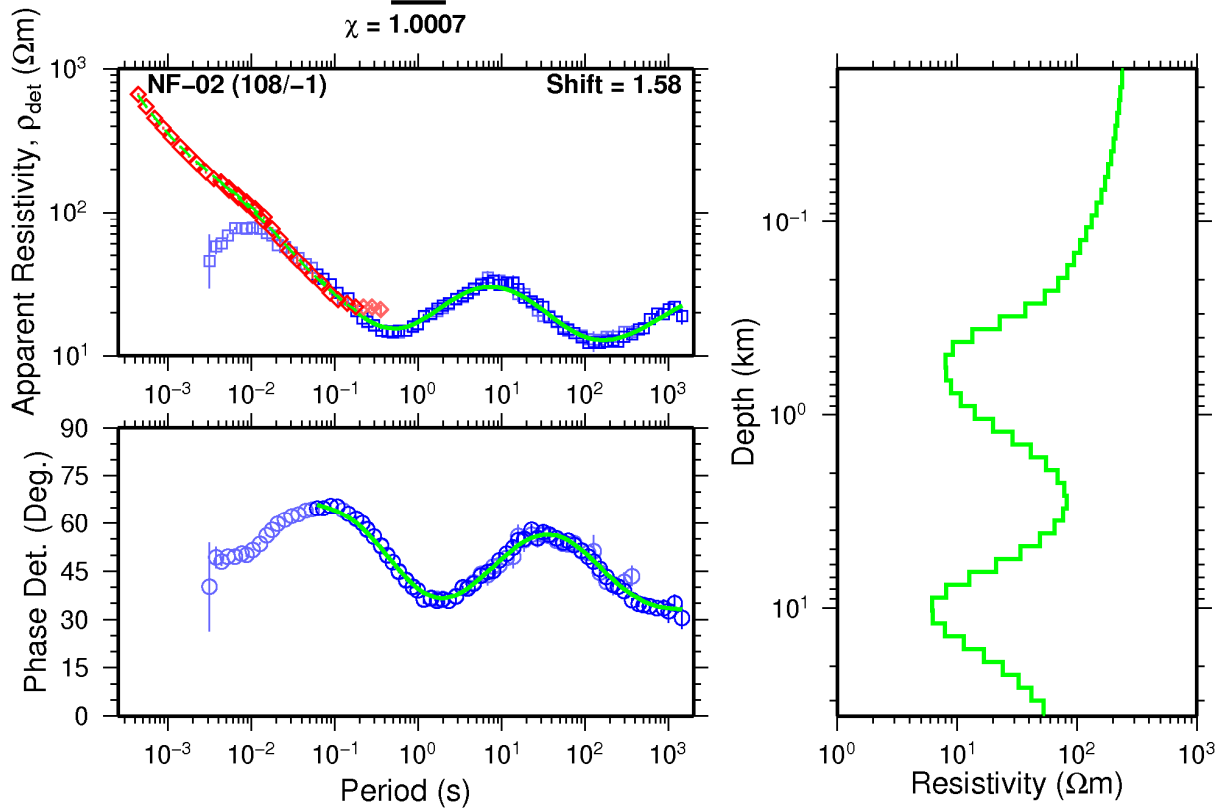
# 011\_out

$\chi = 0.69489$



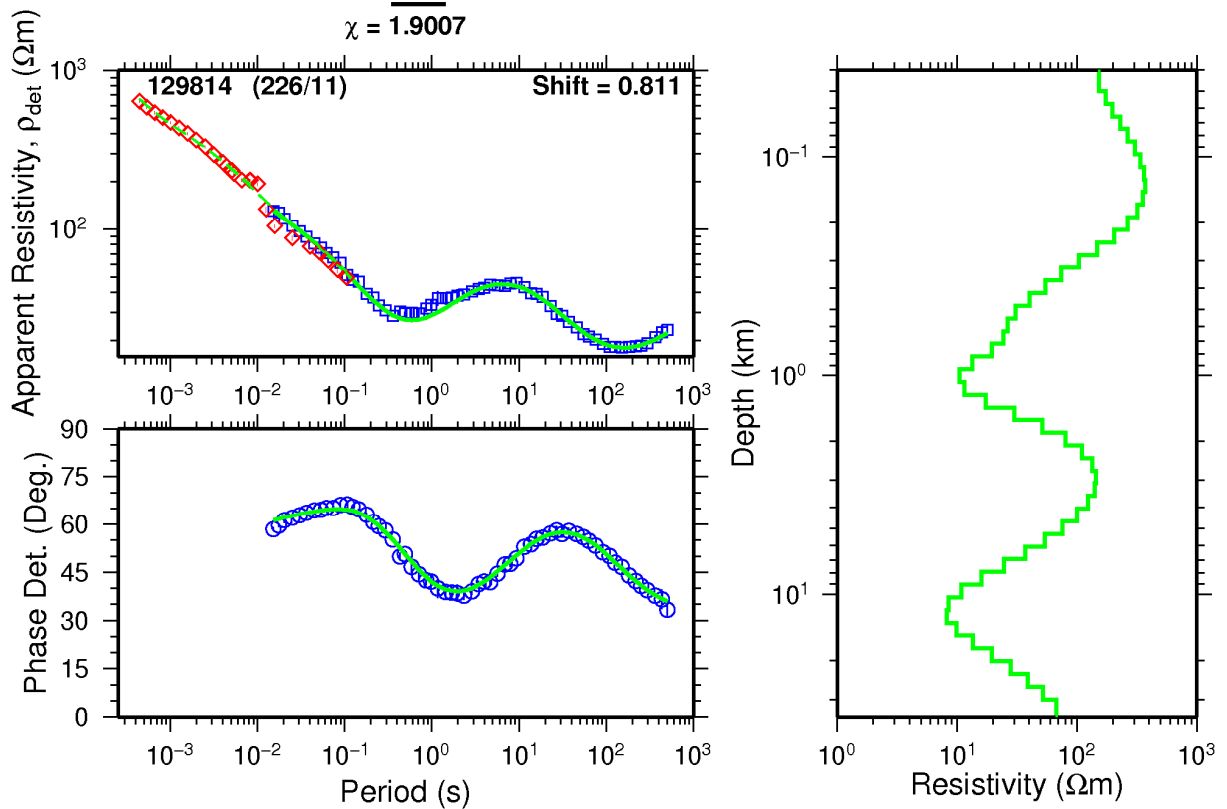
# 012\_out

$\chi = 1.0007$



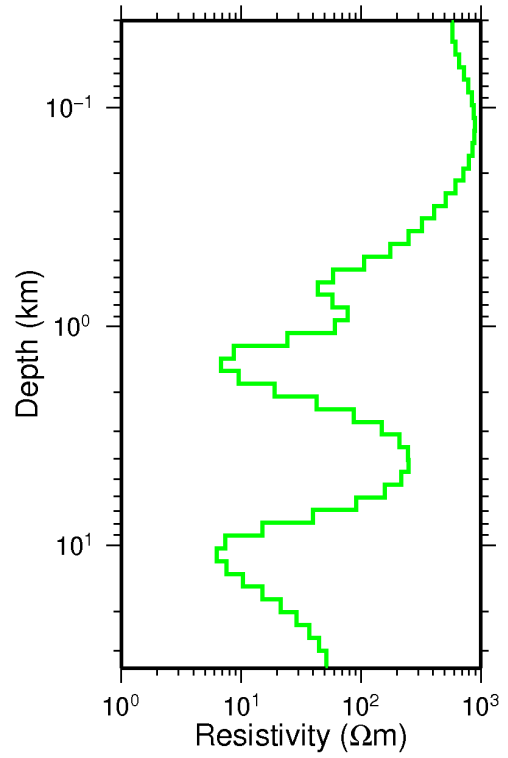
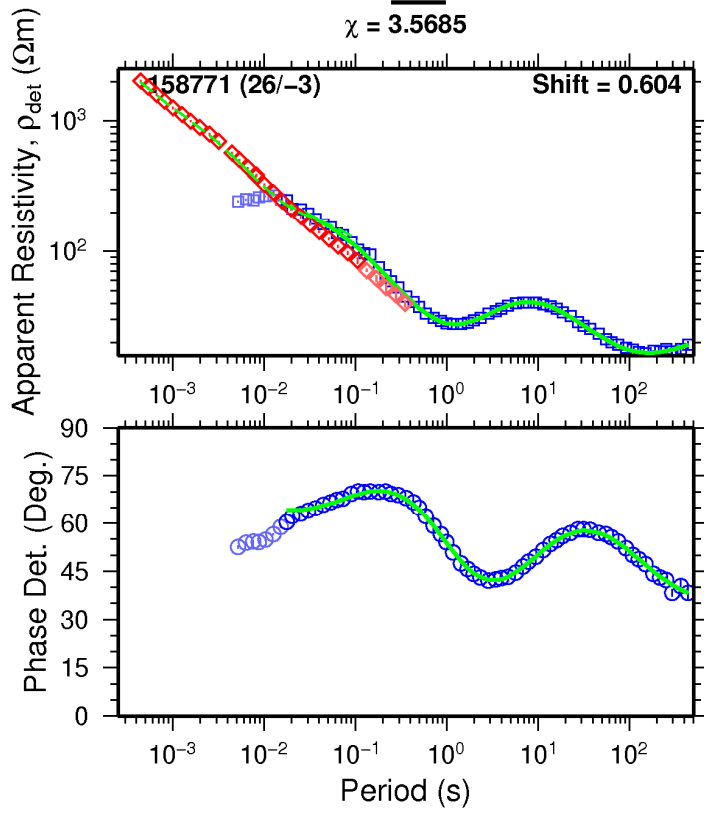
# 013\_out

$\chi = 1.9007$



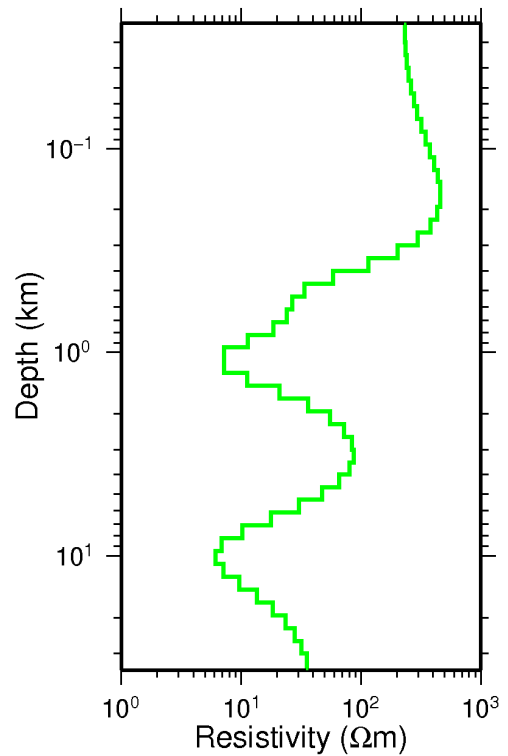
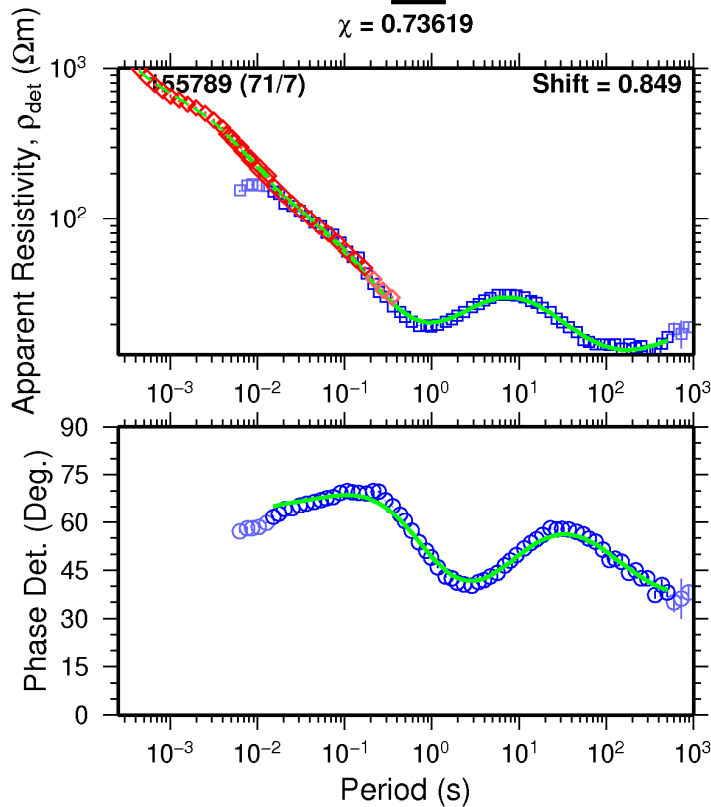
# 021\_out

$\chi = 3.5685$



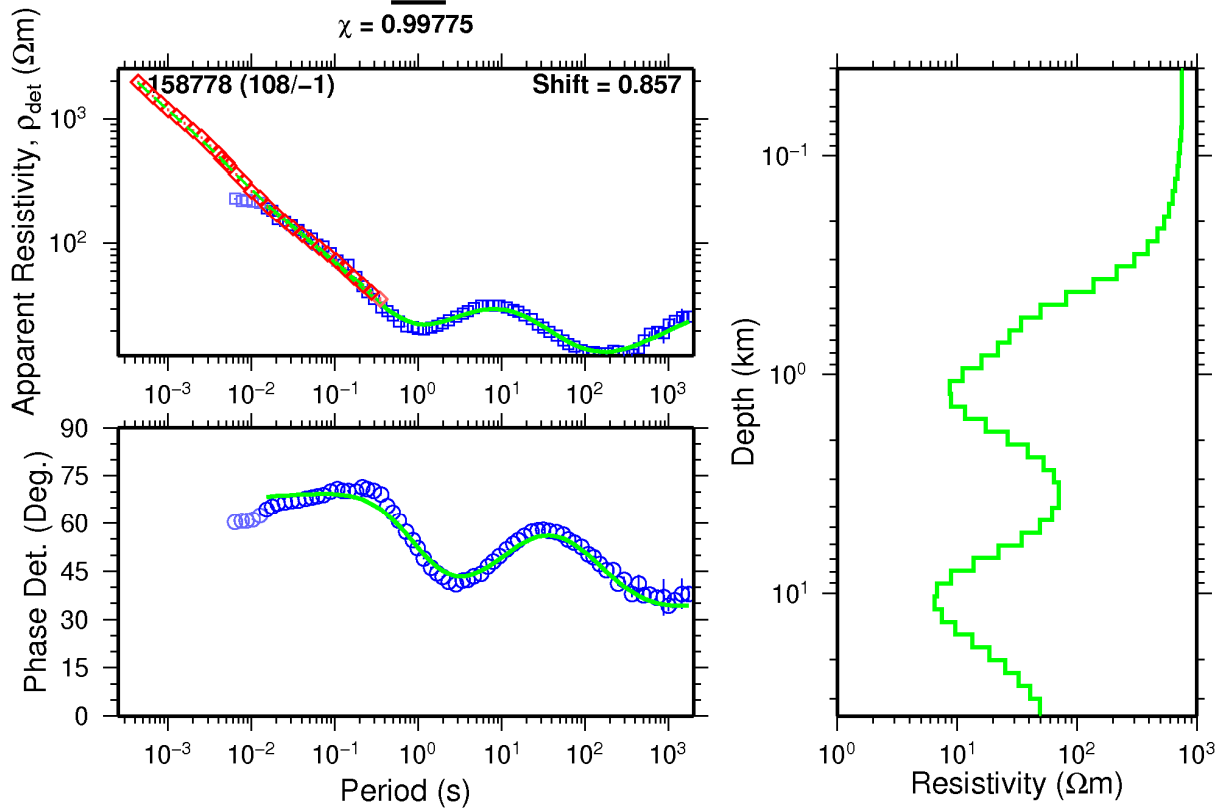
# 023\_out

$\chi = 0.73619$



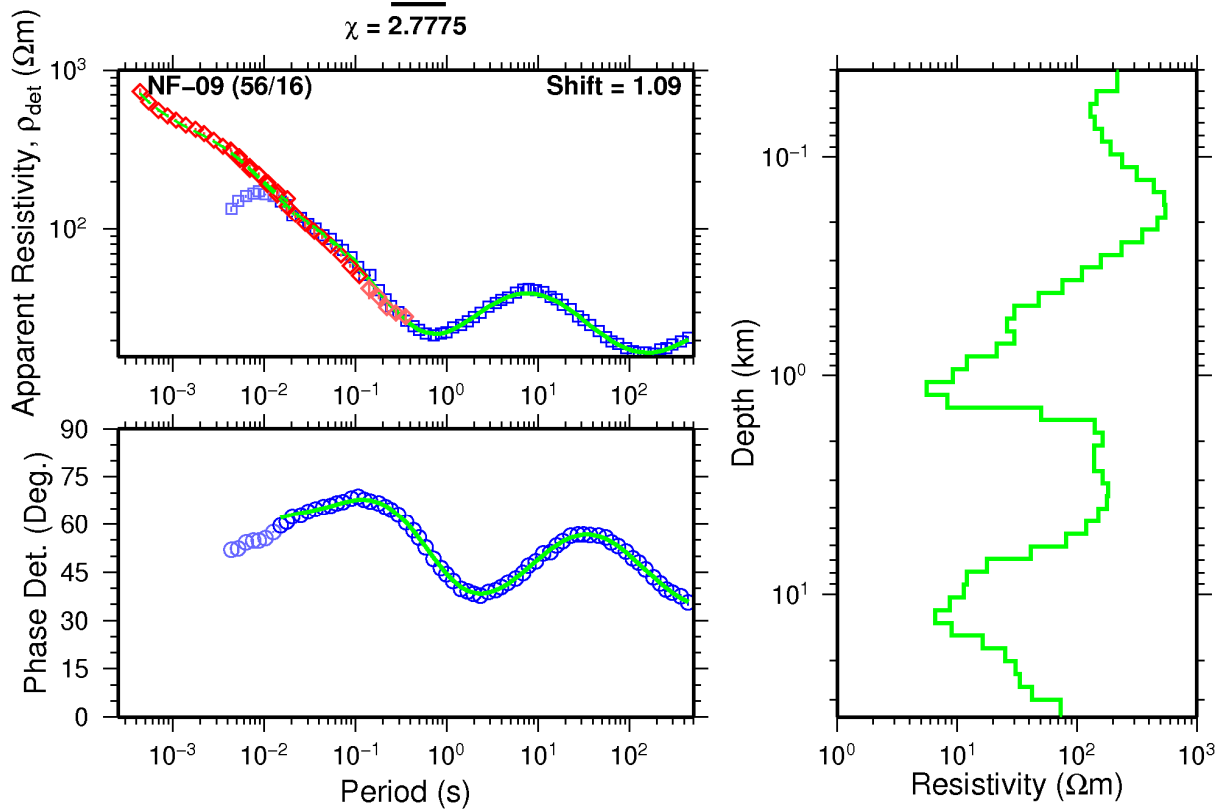
# 024\_out

$\chi = 0.99775$



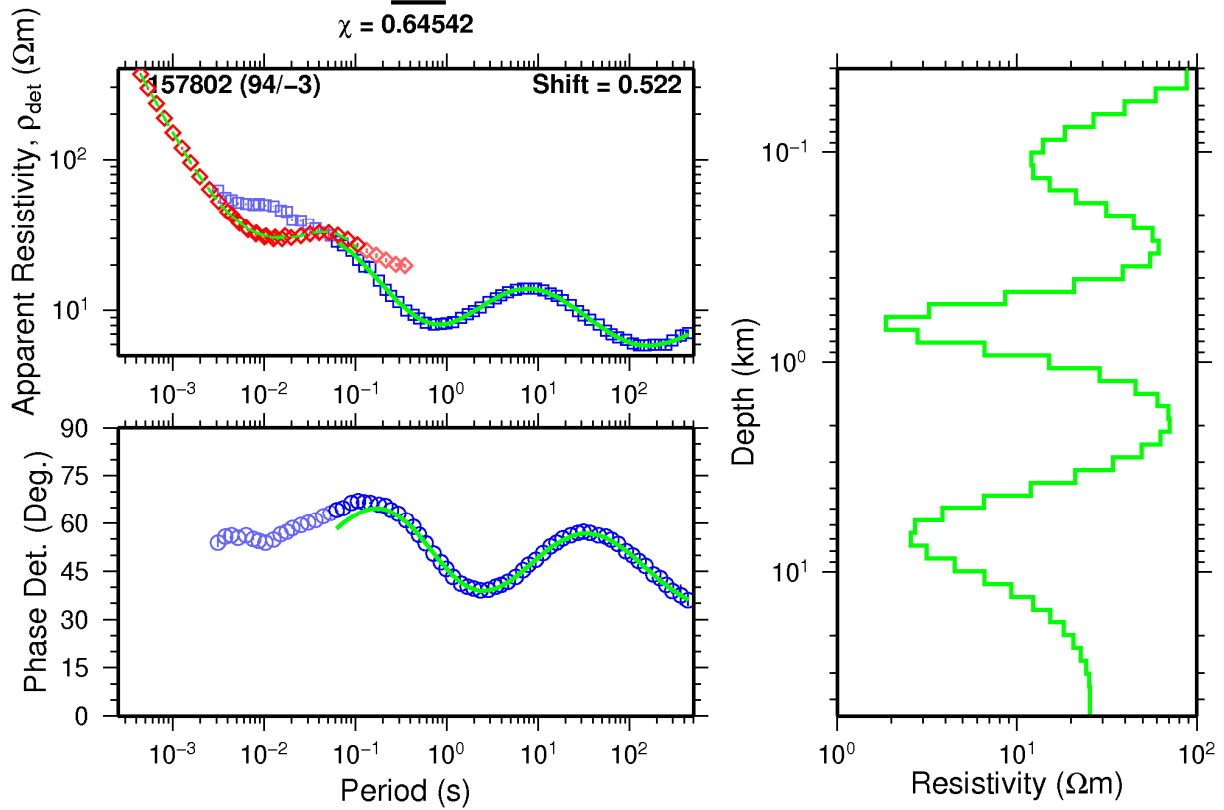
# 027\_out

$\chi = 2.7775$



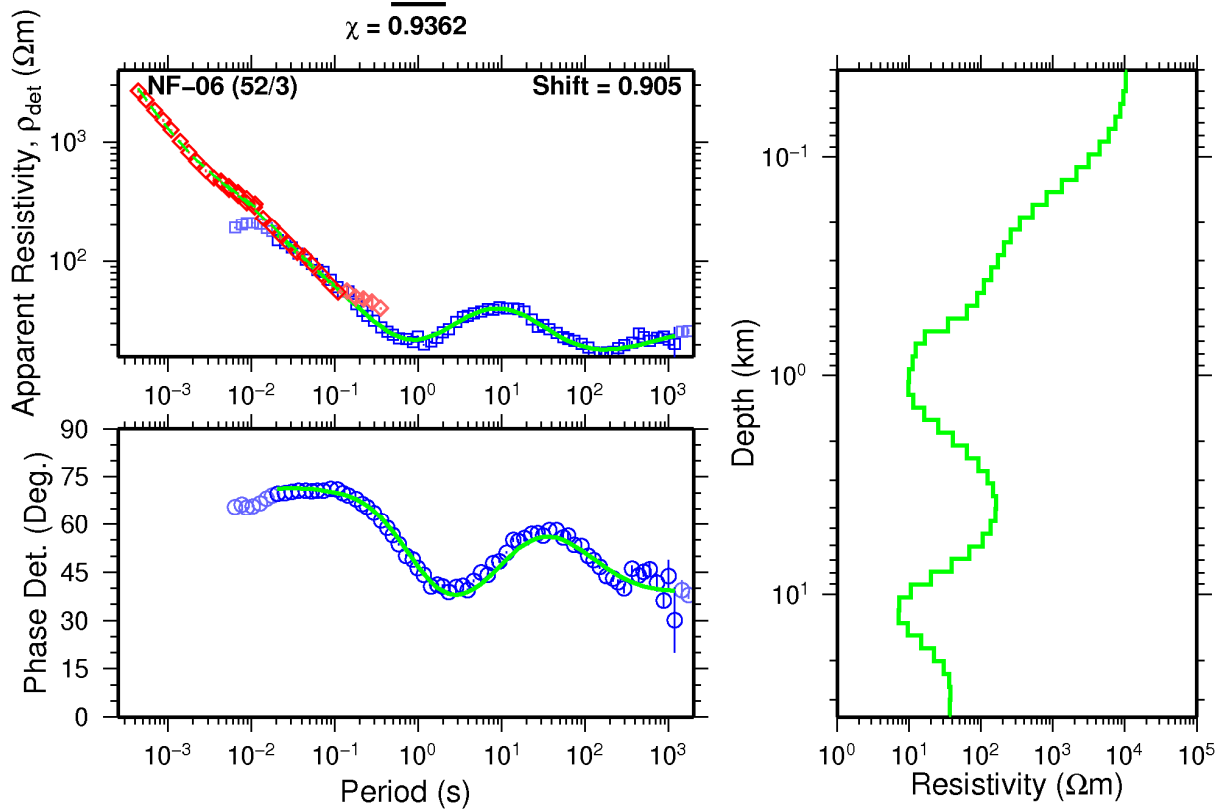
# 031\_out

$\chi = 0.64542$



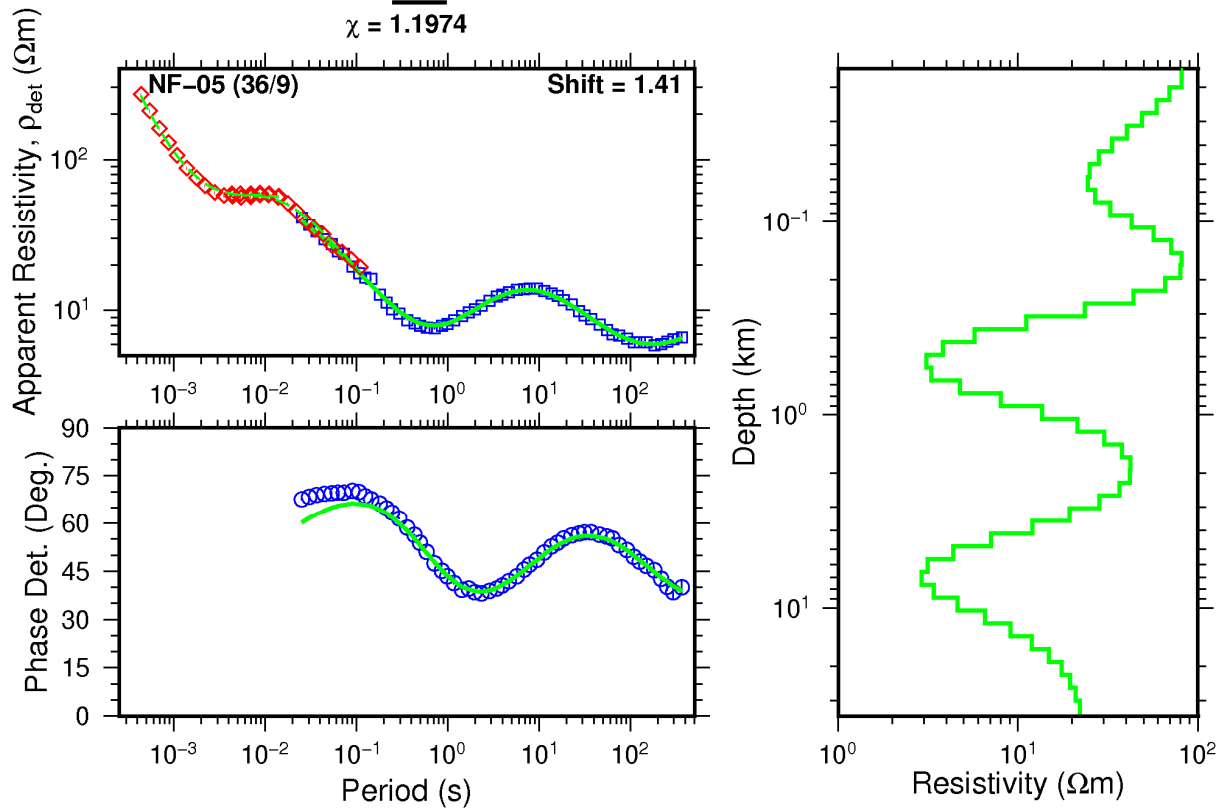
# 108\_out

$\chi = 0.9362$



# 125\_out

$\chi = 1.1974$



# 132\_out

$\chi = 2.2236$

