



**UNITED NATIONS
UNIVERSITY**

GEOTHERMAL TRAINING PROGRAMME
Orkustofnun, Grensasvegur 9,
IS-108 Reykjavik, Iceland

Reports 2012
Number 32

**APPENDICES TO THE REPORT:
JOINT 1D INVERSION OF MT AND TEM RESISTIVITY DATA FROM
THE THEISTAREYKIR HIGH-TEMPERATURE GEOTHERMAL
AREA, NE-ICELAND AND COMPARISON WITH ALTERATION
AND TEMPERATURE LOGS FROM BOREHOLES**

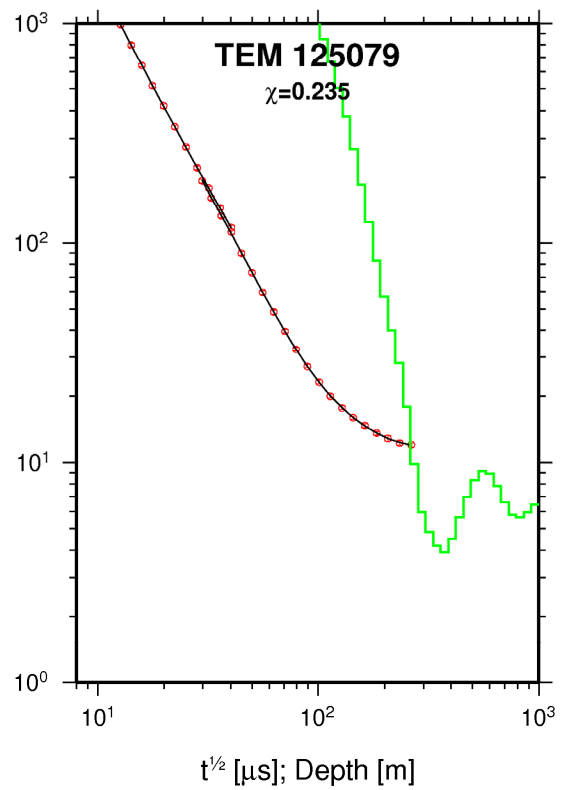
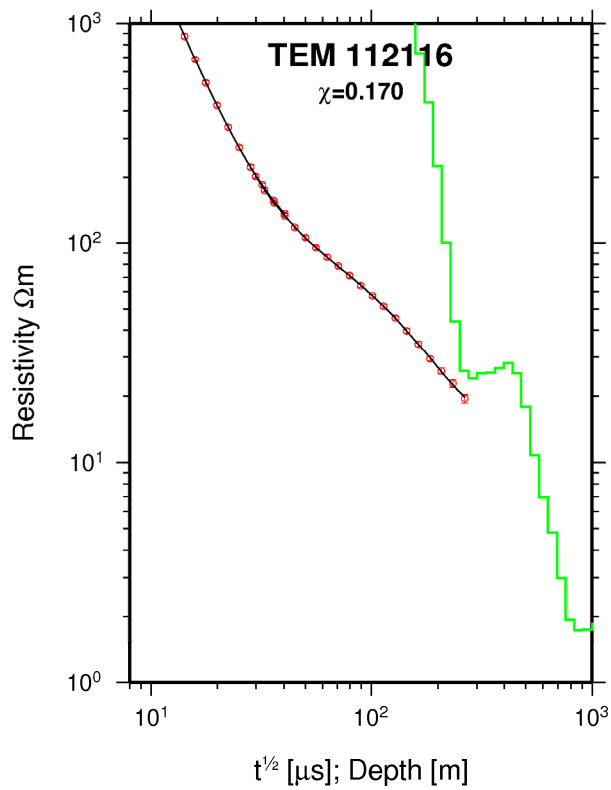
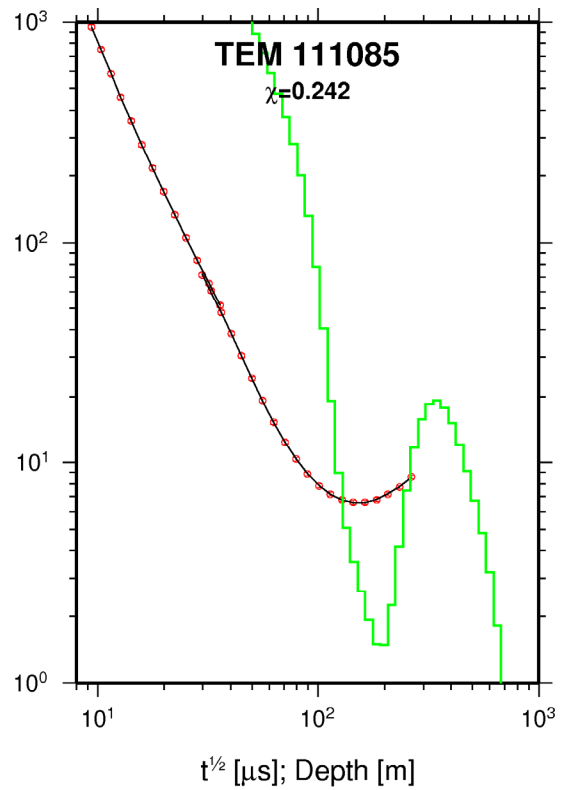
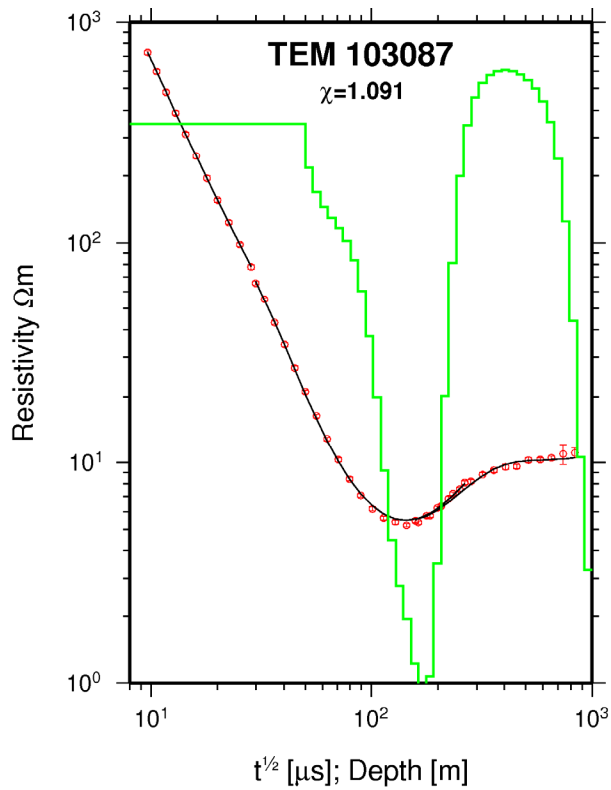
by

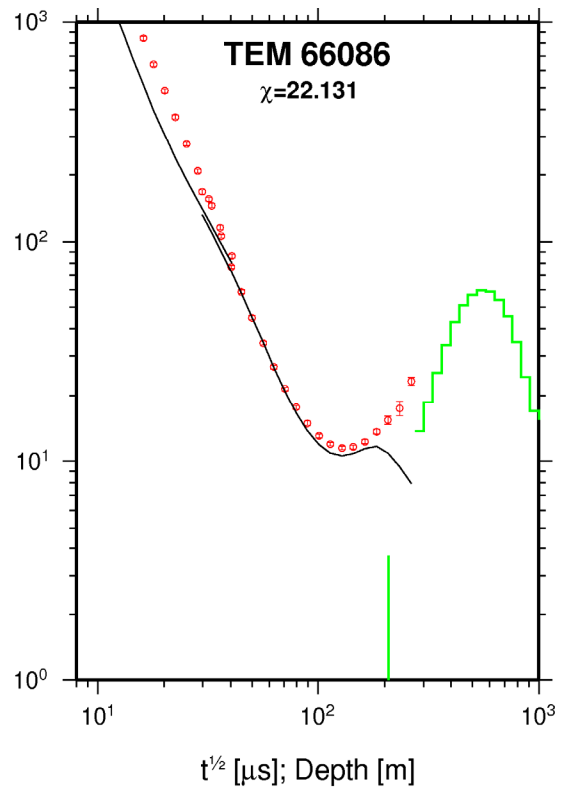
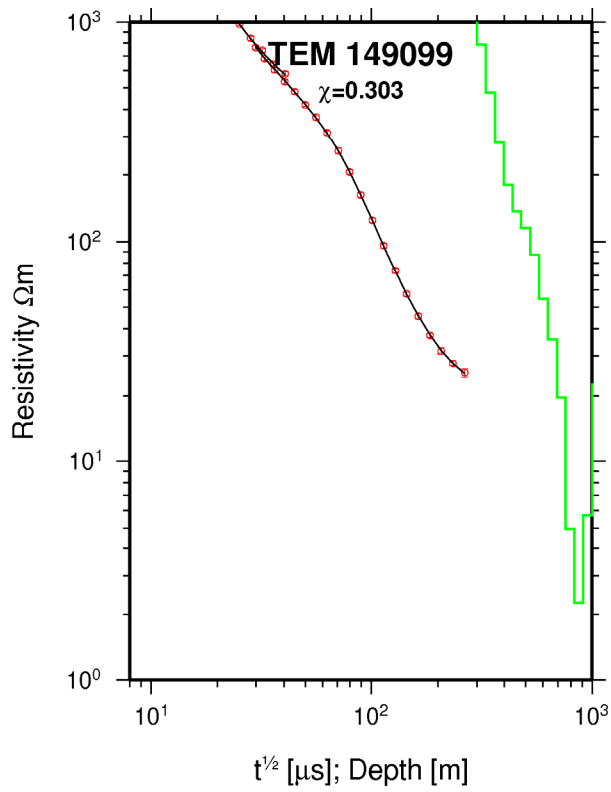
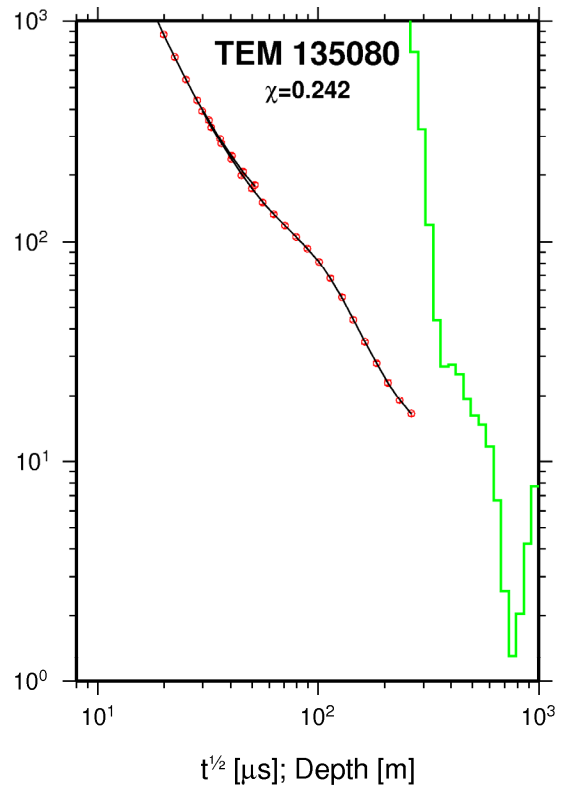
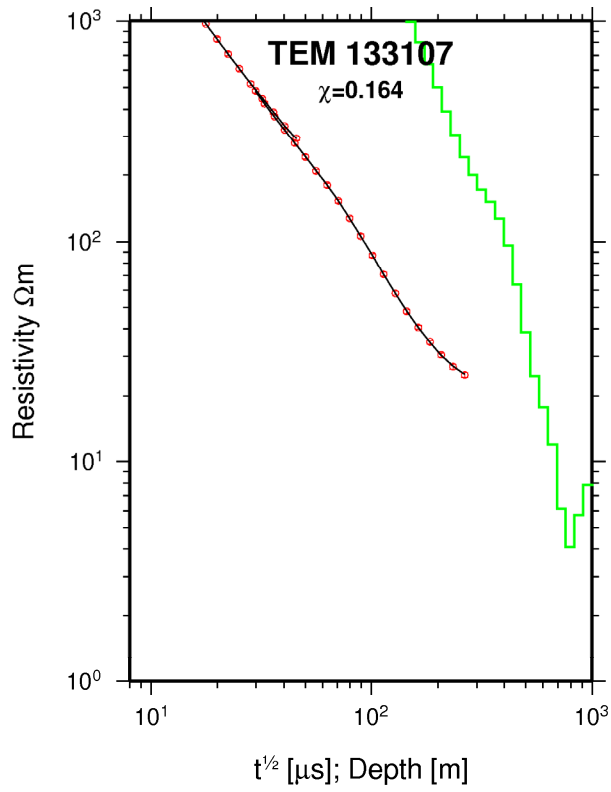
Nuwan Buddika Suriyaarachchi
Institute of Fundamental Studies
Hanthana Road
Kandy
SRI LANKA
nuwan@ifs.ac.lk, nuwan1985@gmail.com

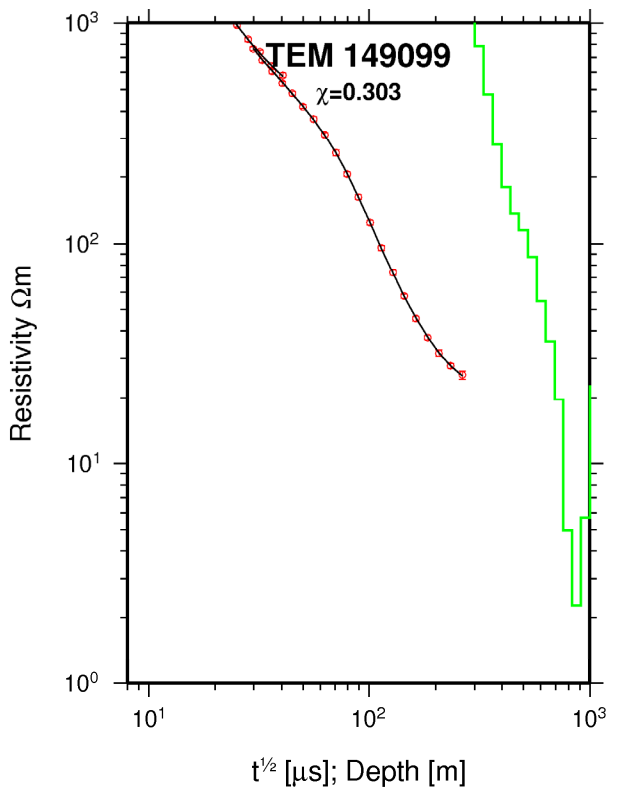
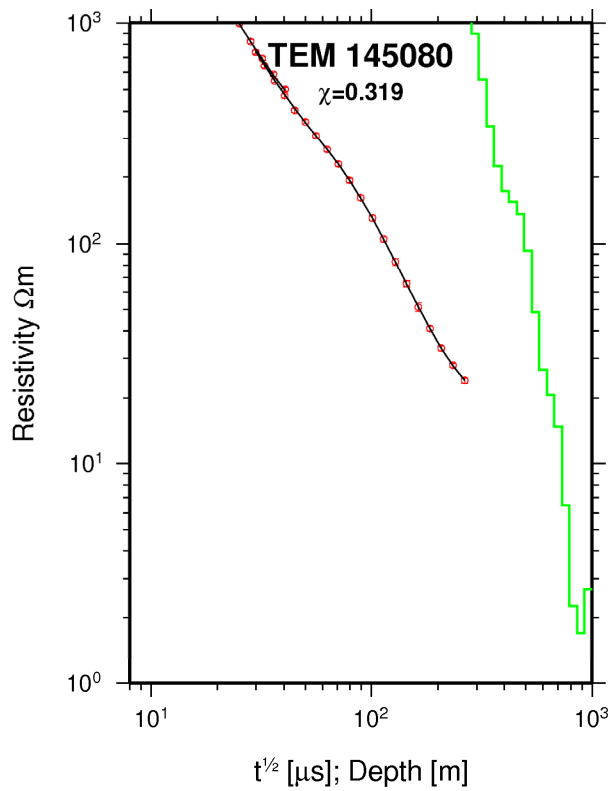
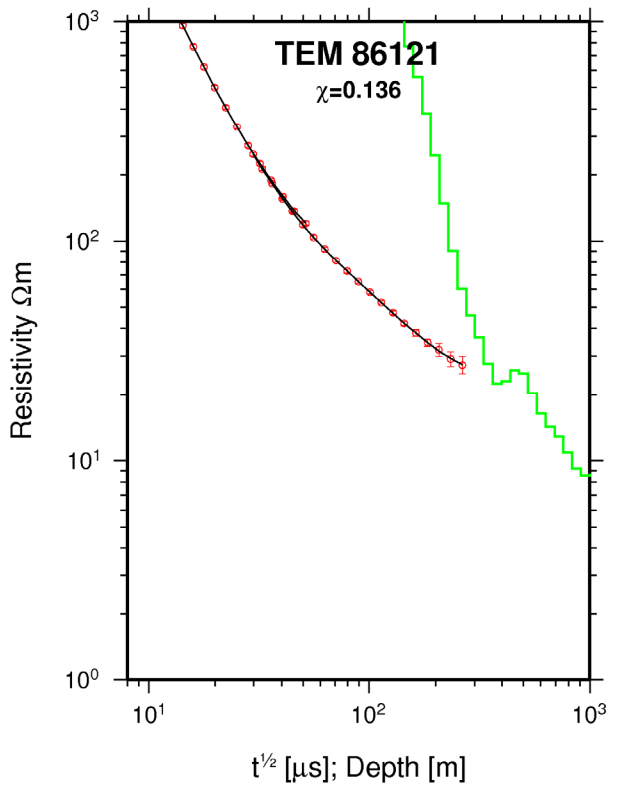
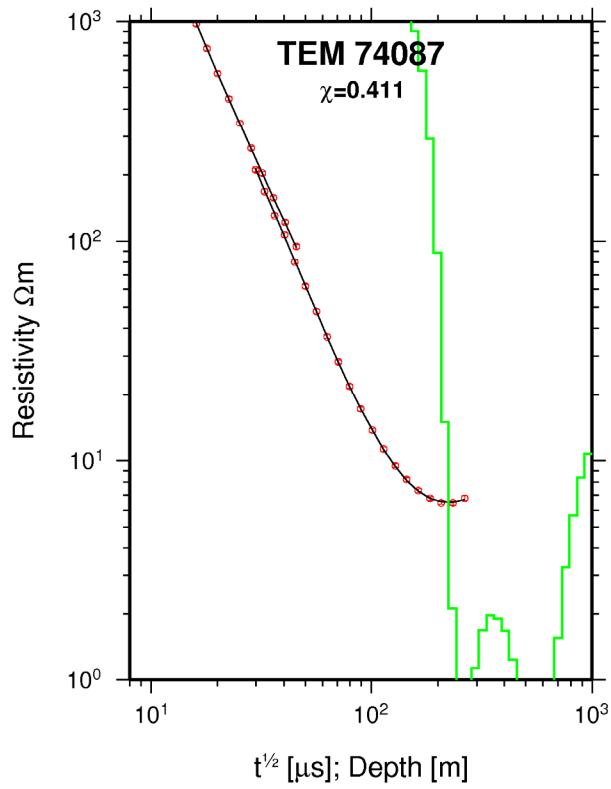
United Nations University
Geothermal Training Programme
Reykjavík, Iceland
Published in 2012

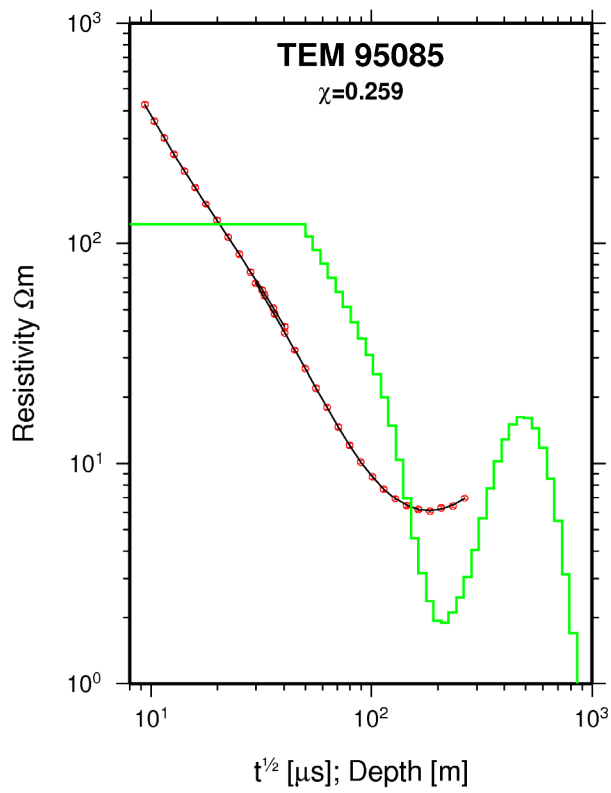
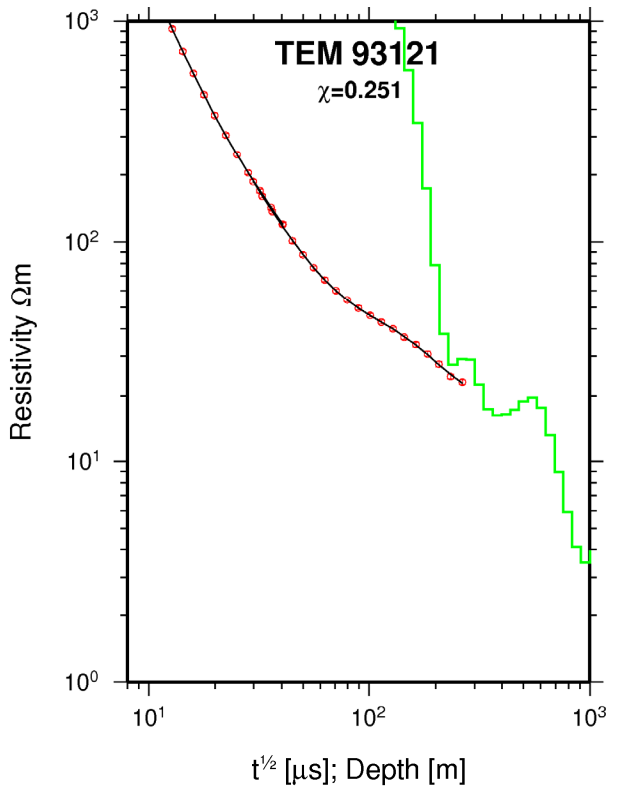
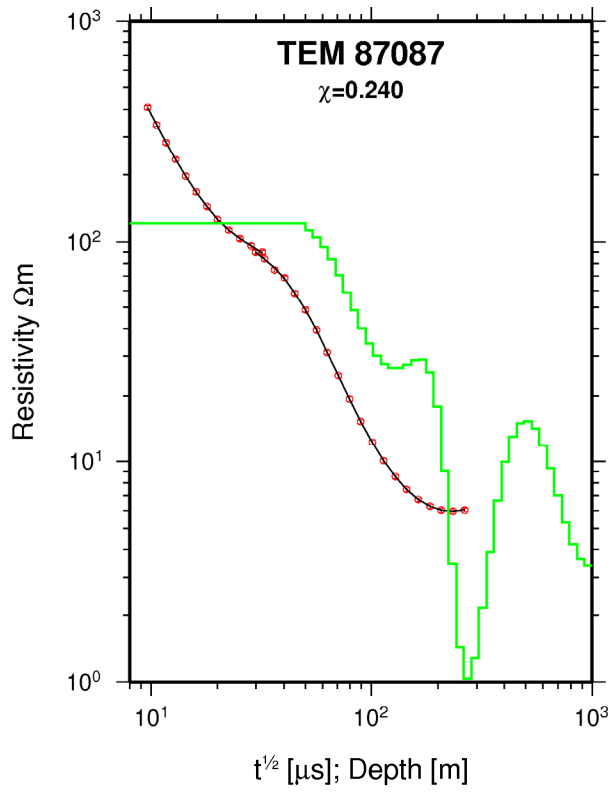
These are appendices to the report “Joint 1D inversion of MT and TEM resistivity data from the Theistareykir high-temperature geothermal area, NE-Iceland and comparison with alteration and temperature logs from borehole.” by Nuwan Buddika Suriyaarachchi at the UNU/Geothermal Training Programme in 2012. Appendix I shows the TEM data and associated 1D models for the TEM soundings. Appendix II shows the processed data for all the MT soundings. Appendix III contains the ID models of the joint inversion for all the TEM and MT data.

APPENDIX I: TEM data and associated 1D models for the TEM soundings





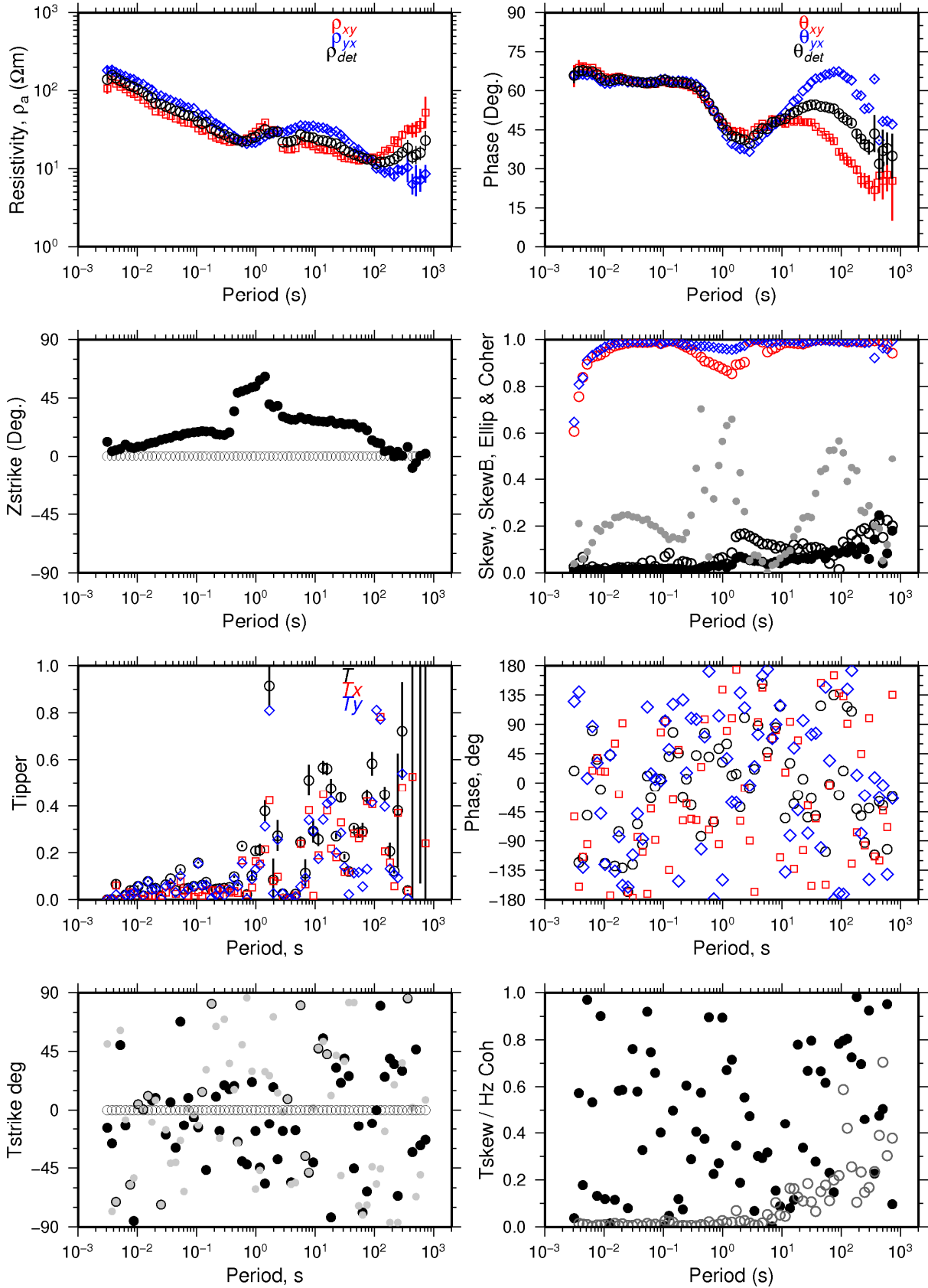




APPENDIX II: Processed data for the MT soundings

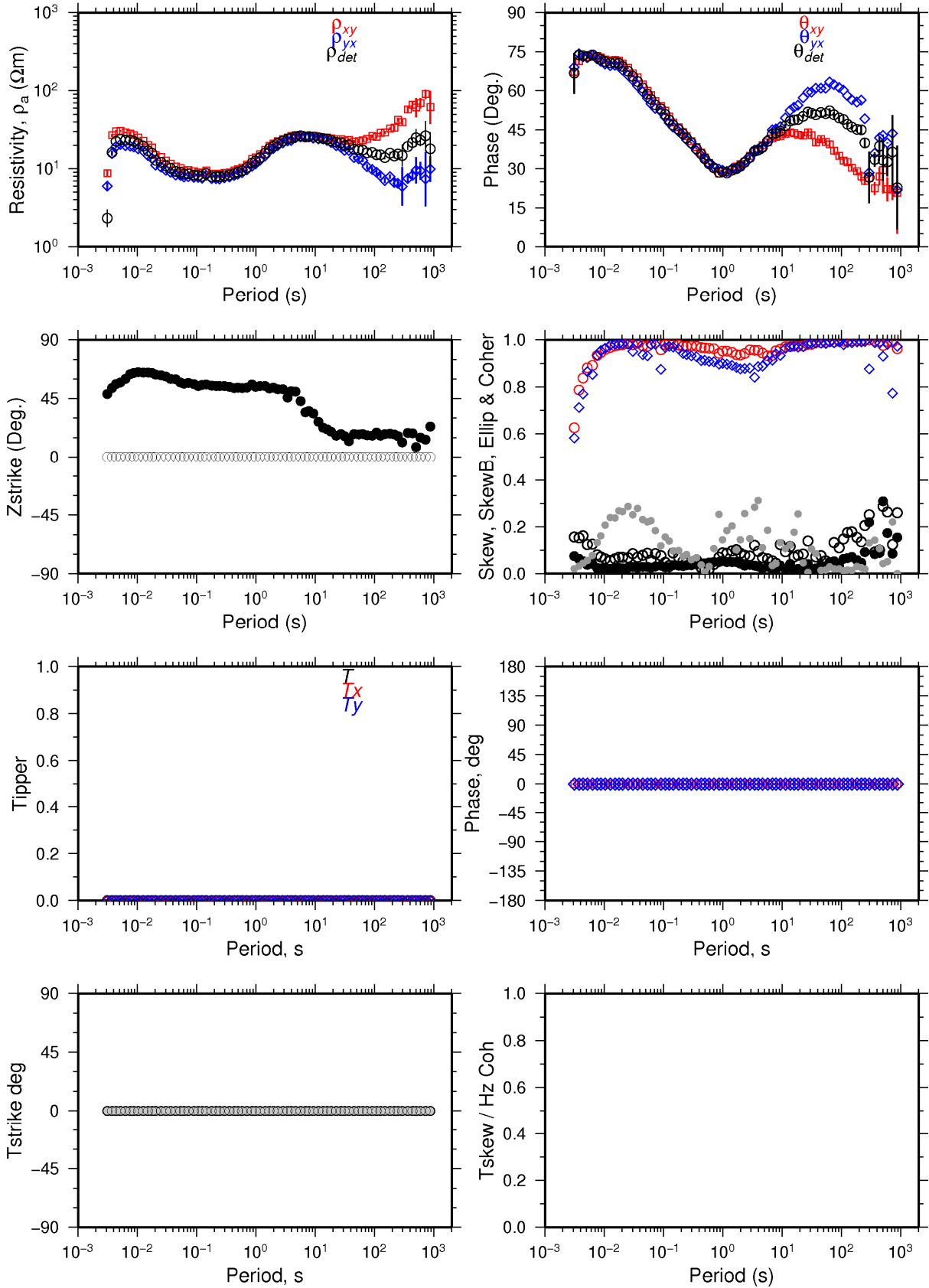
THR017A

Skrá: THR017A.EDI



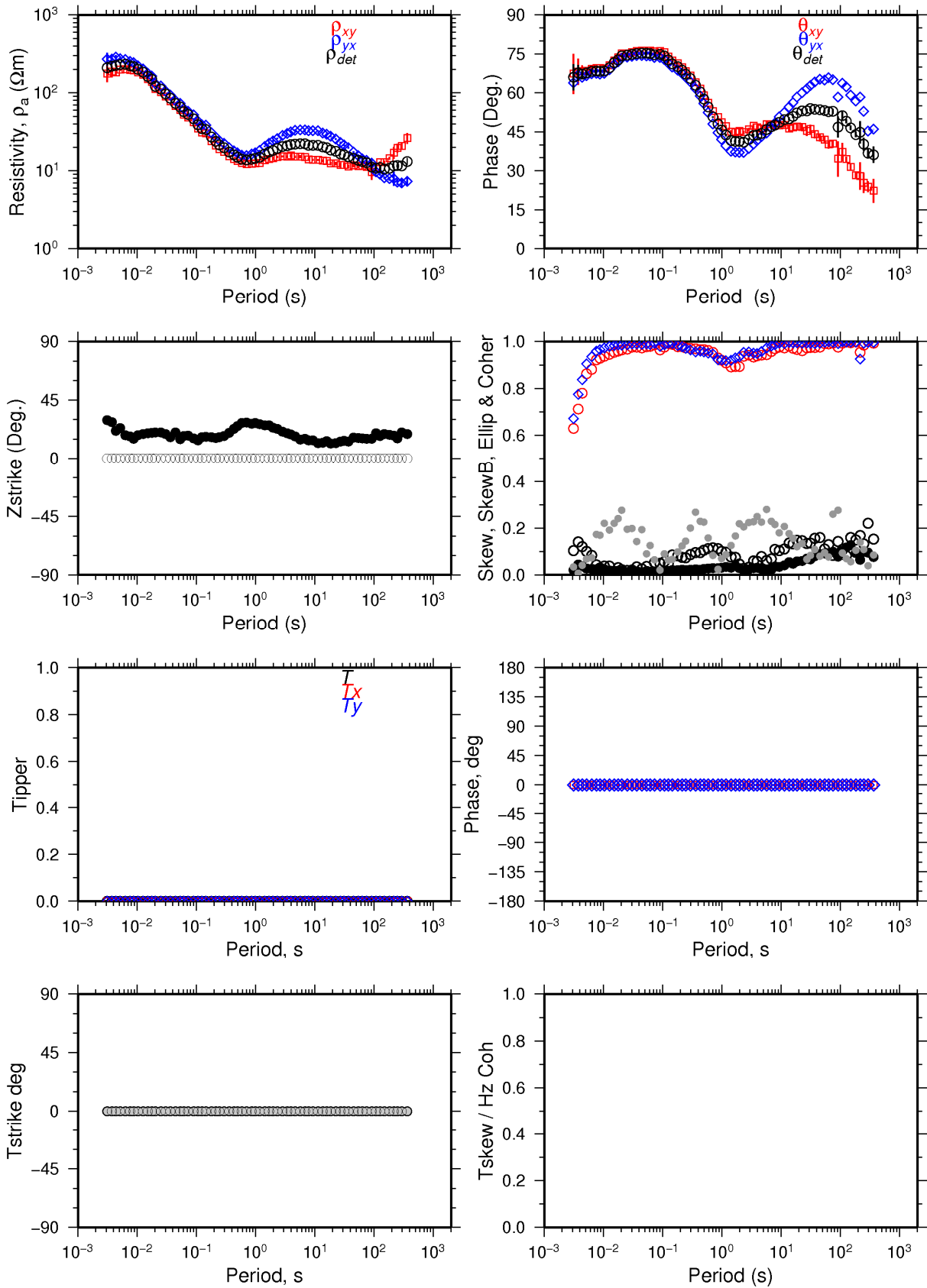
THR033A

Skrá: THR033A.EDI



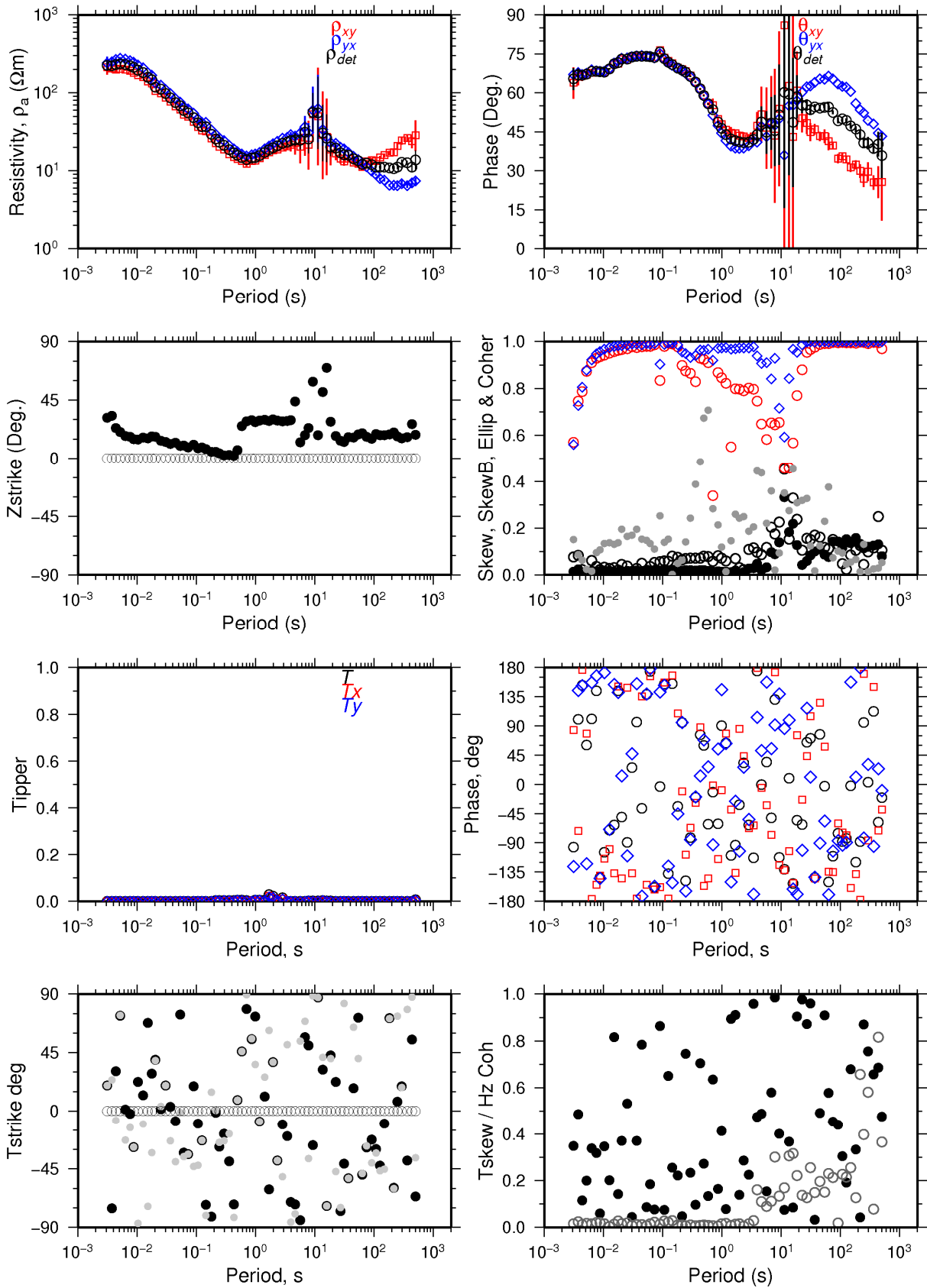
THR041A

Skrá: THR041A.EDI



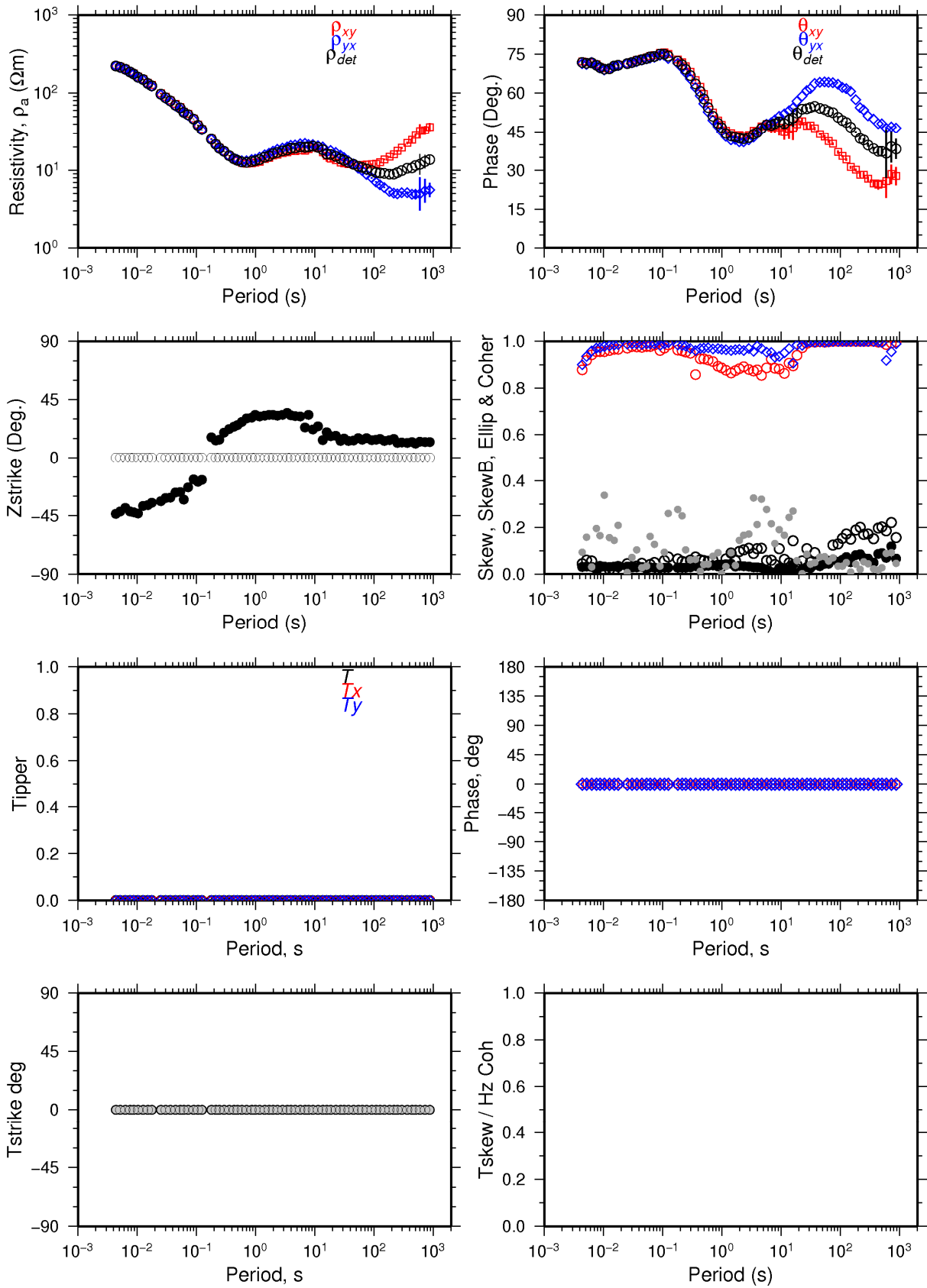
THR043B

Skrá: THR043B.EDI



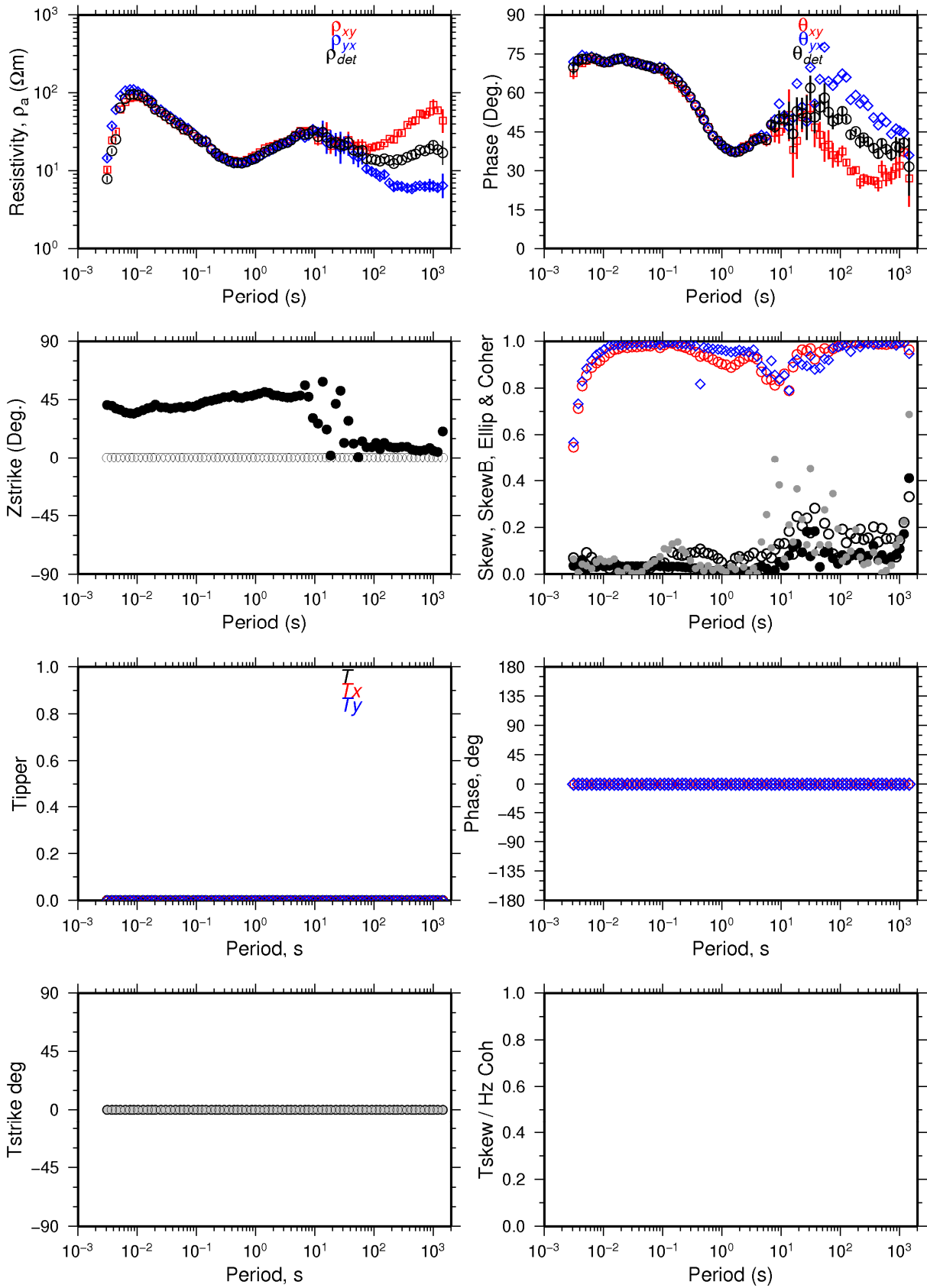
THR045

Skrá: THR045.EDI



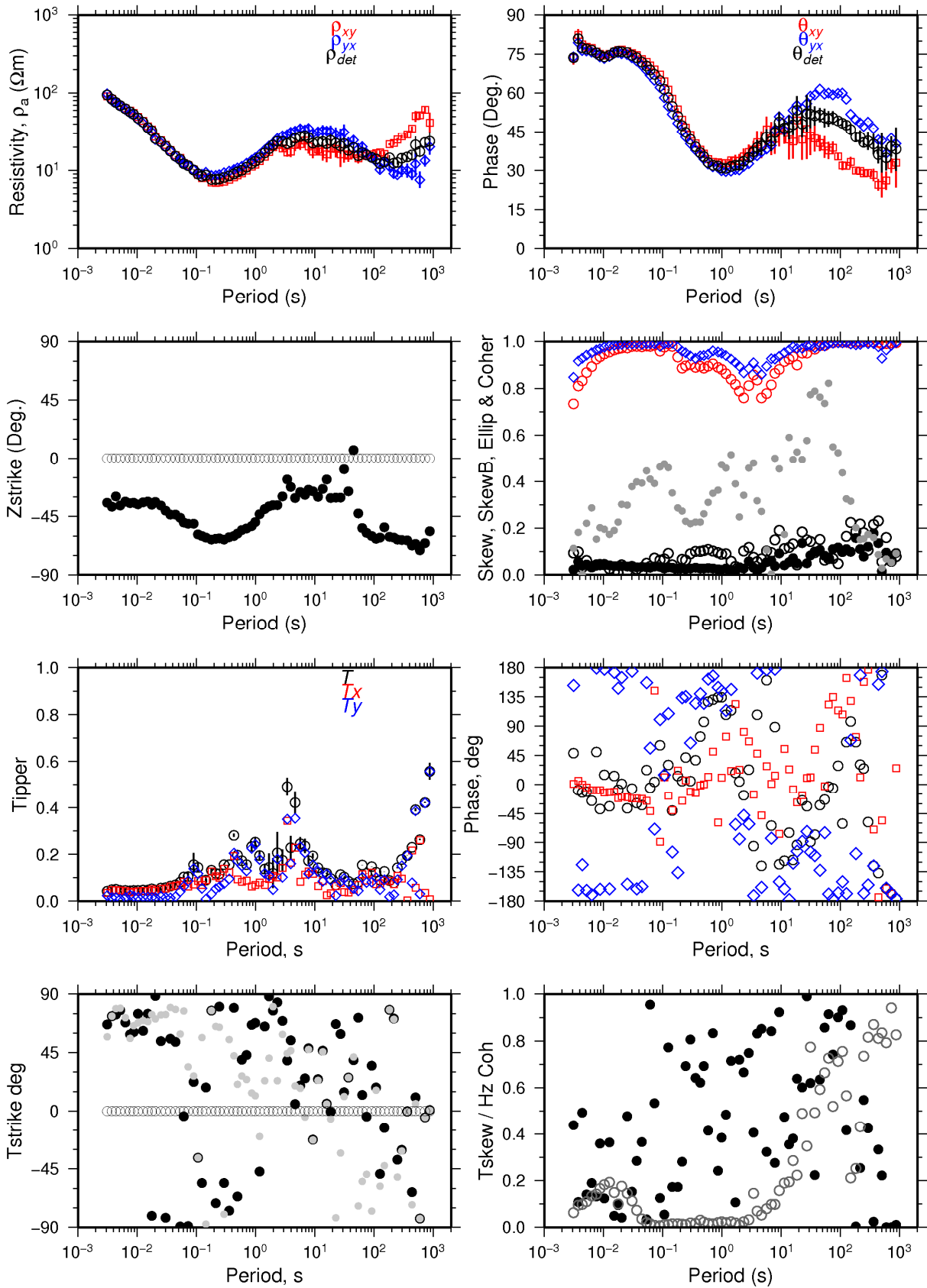
THR047A

Skrá: THR047A.EDI



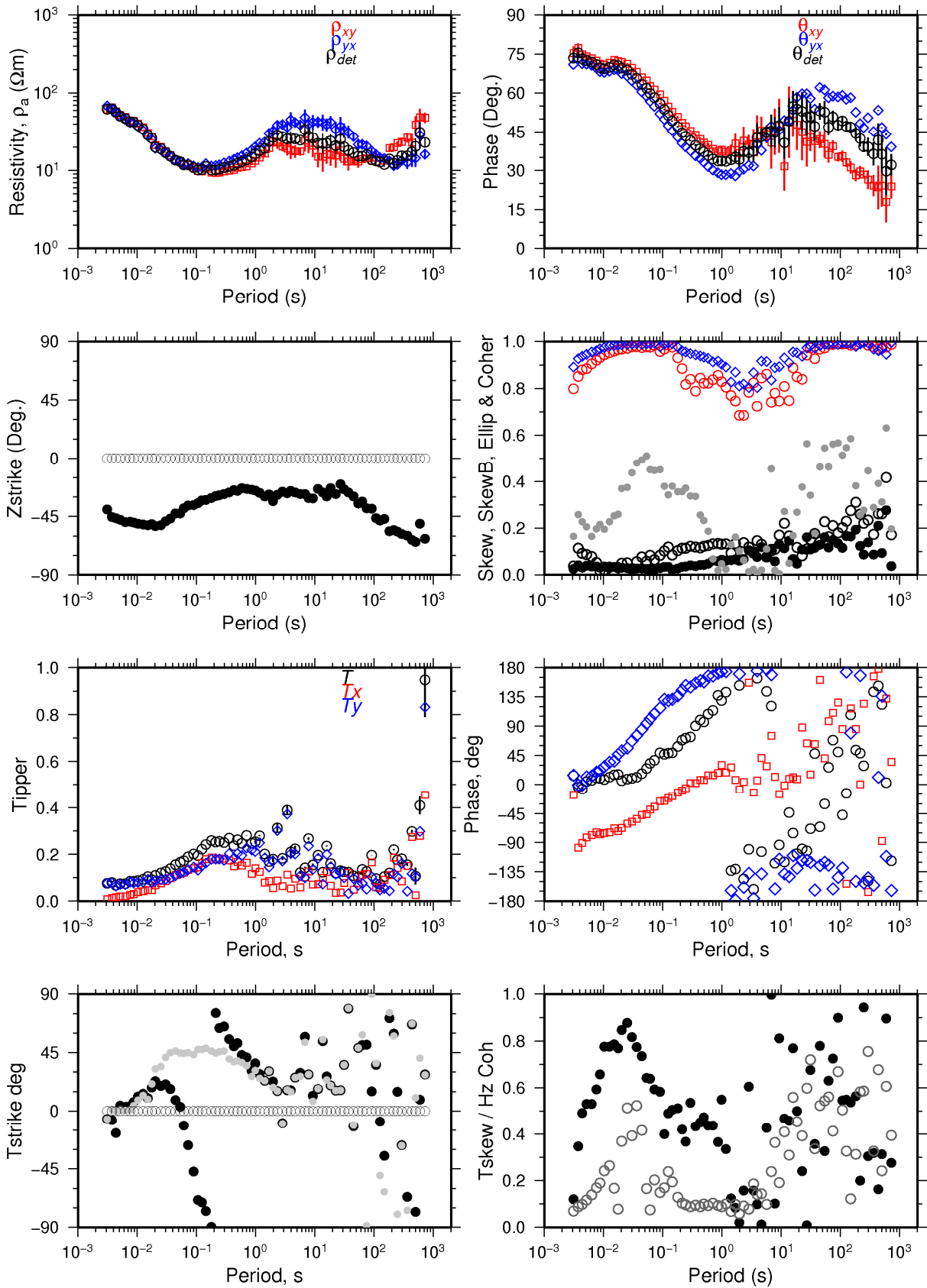
THR120

Skrá: THR120.EDI



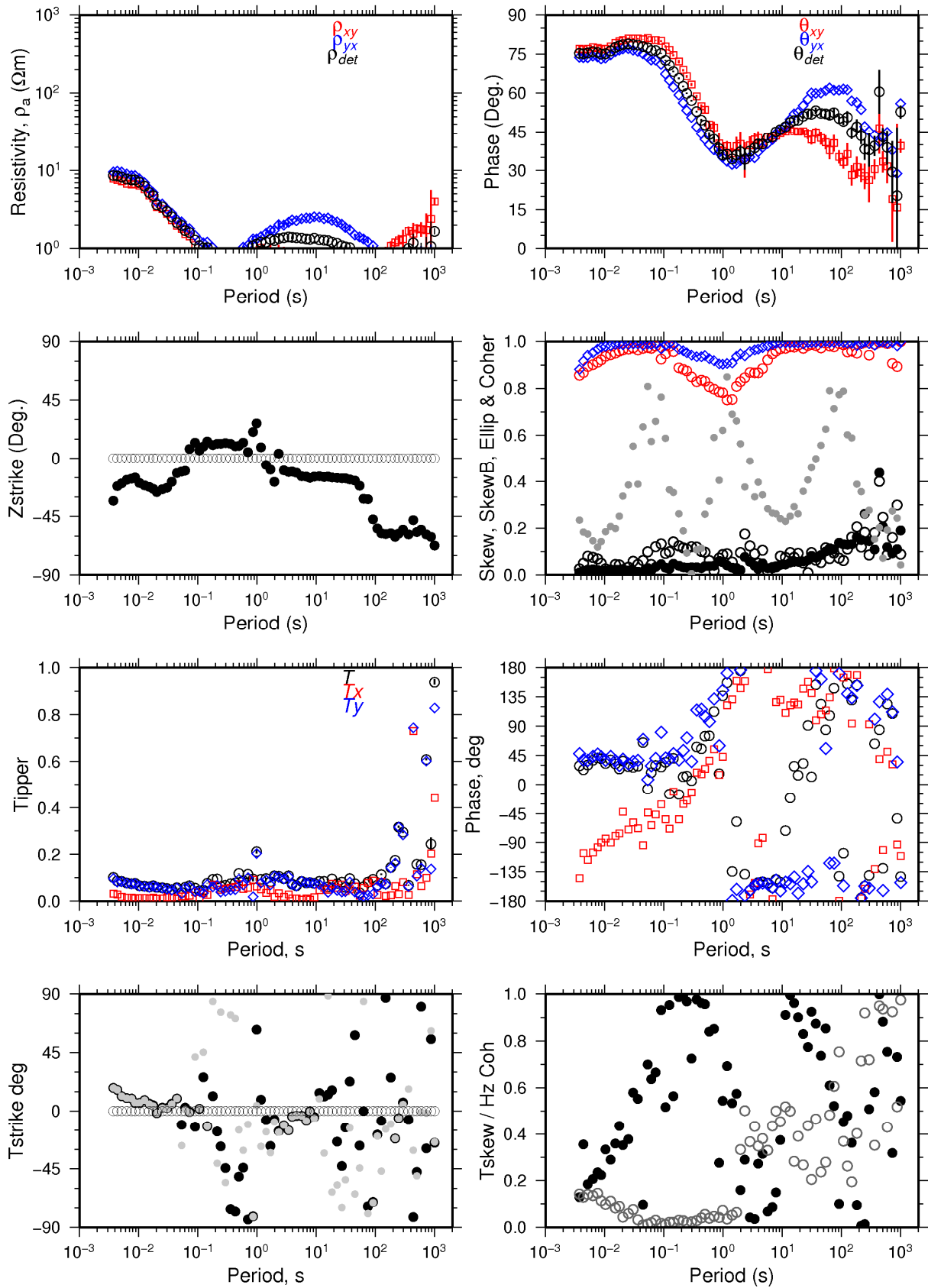
THR121

Skrá: THR121.EDI



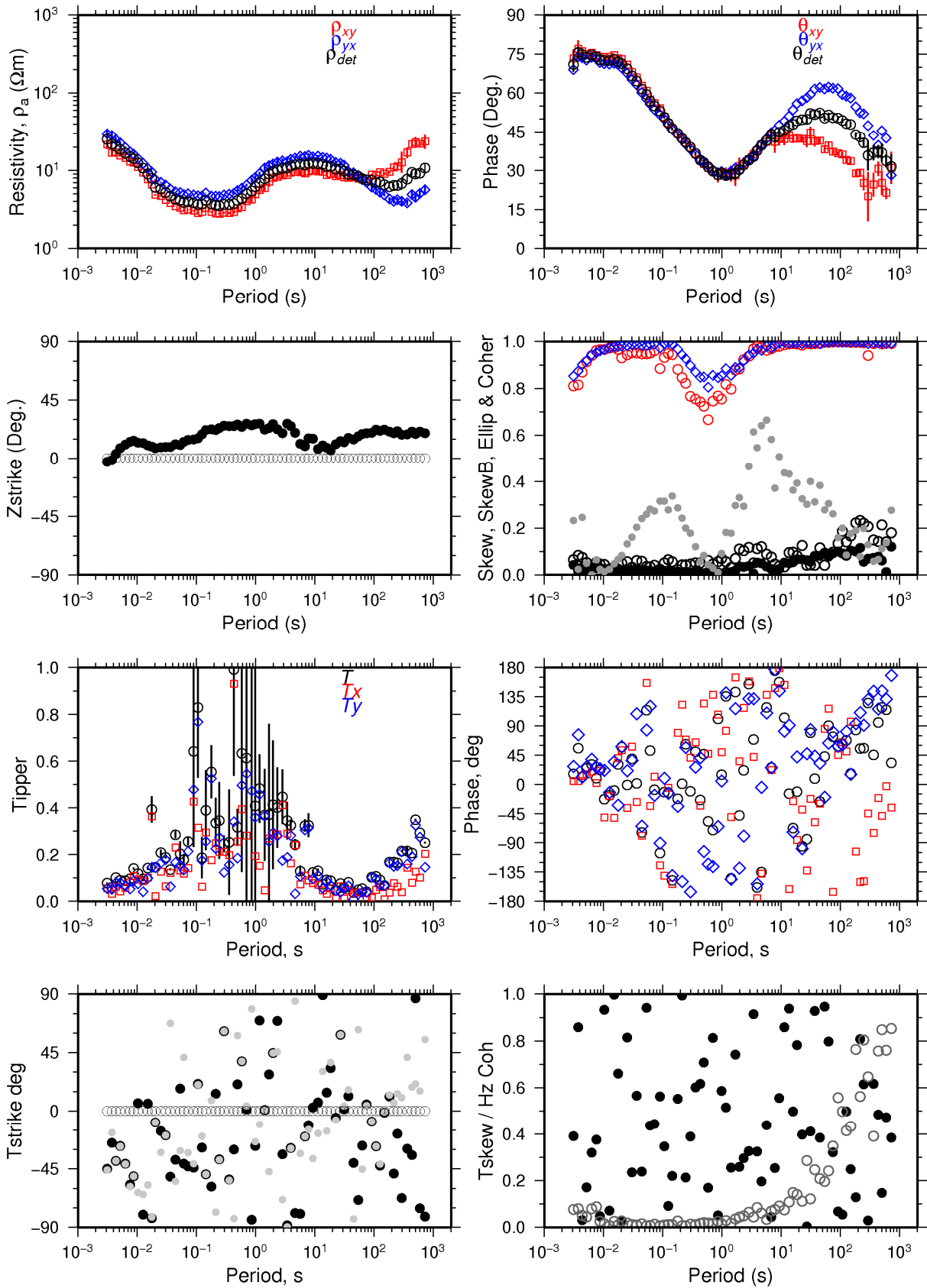
THR122

Skrá: THR122.EDI



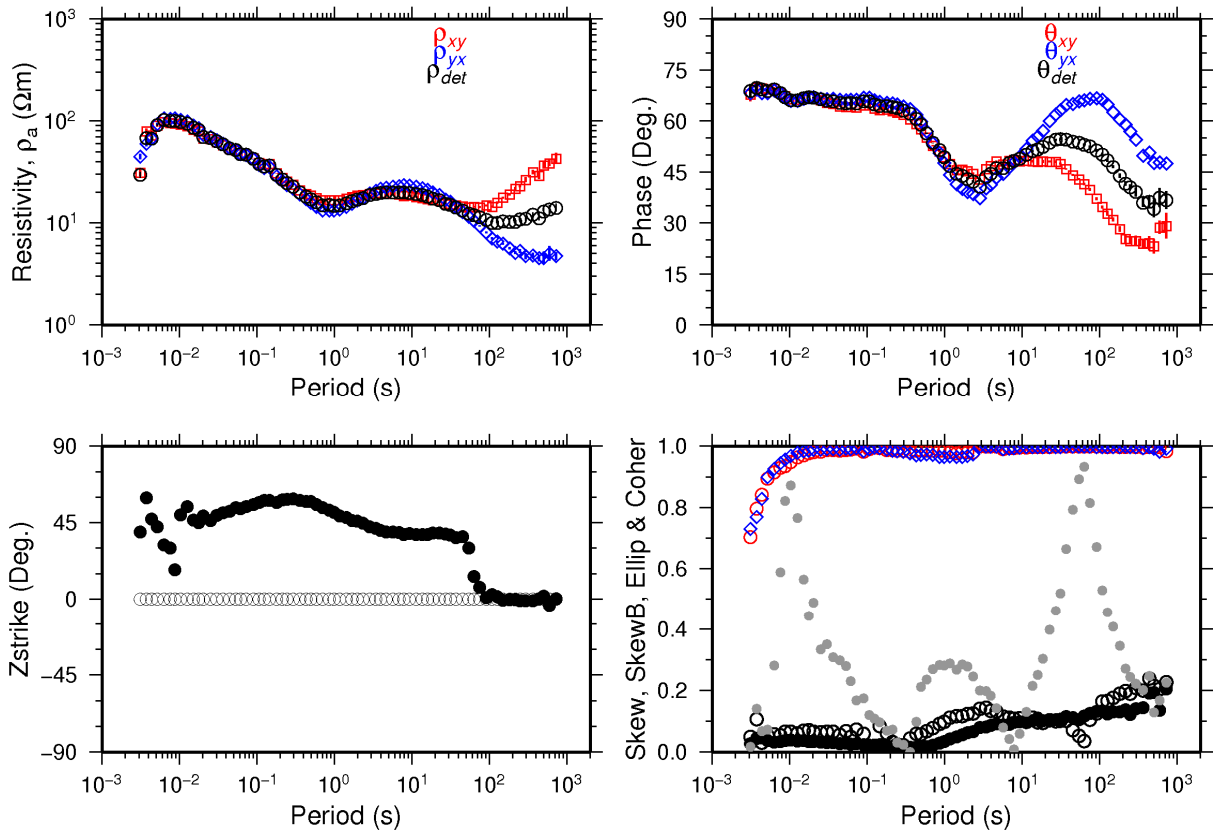
THR125

Skrá: THR125.EDI



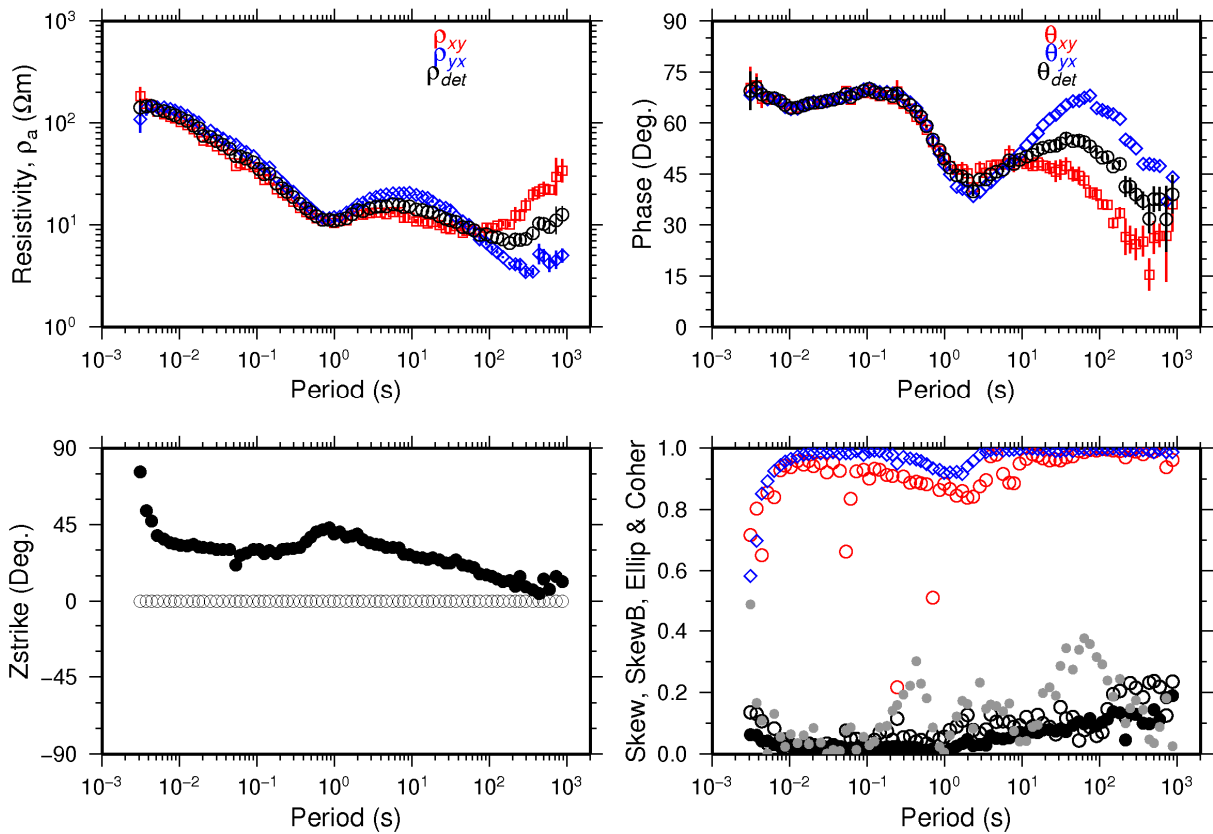
THR018A

Skrá: THR018A.EDI



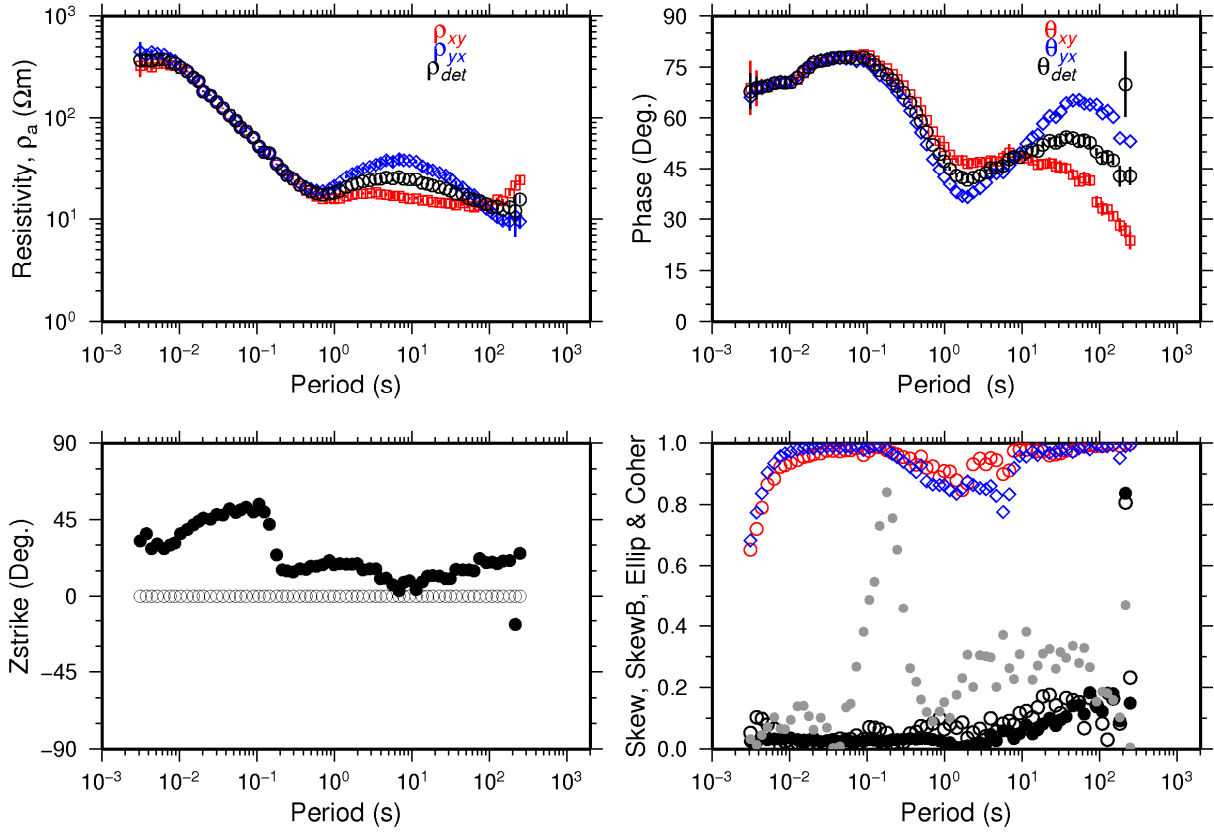
THR029A

Skrá: THR029A.EDI



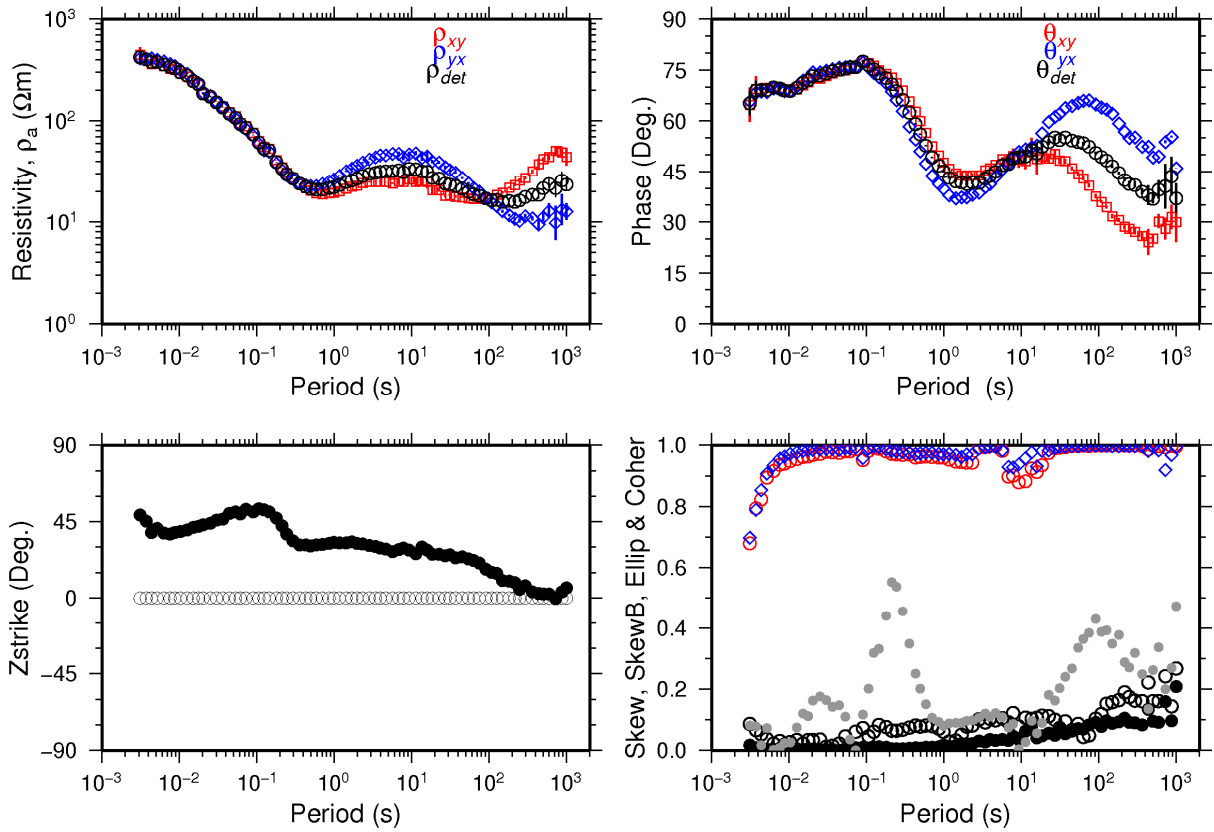
THR039A

Skrá: THR039A.EDI



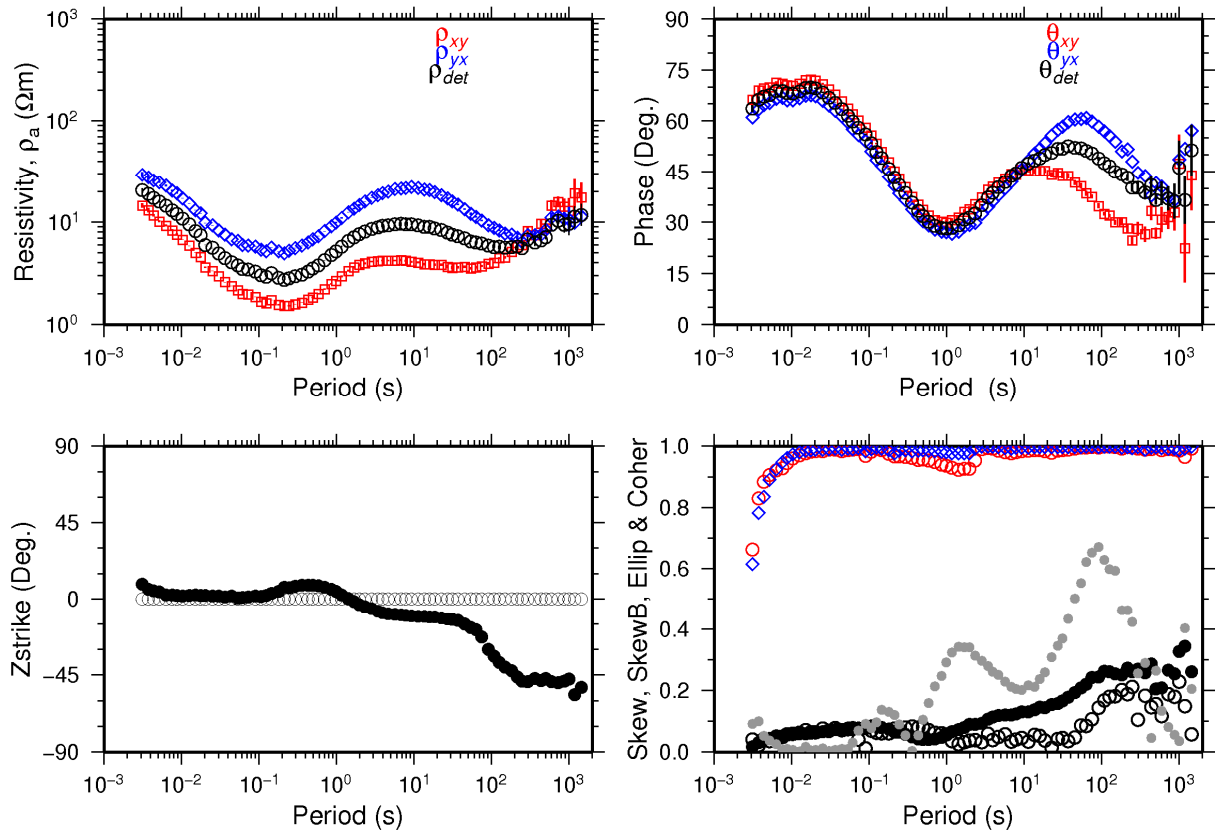
THR046A

Skrá: THR046A.EDI



THR115

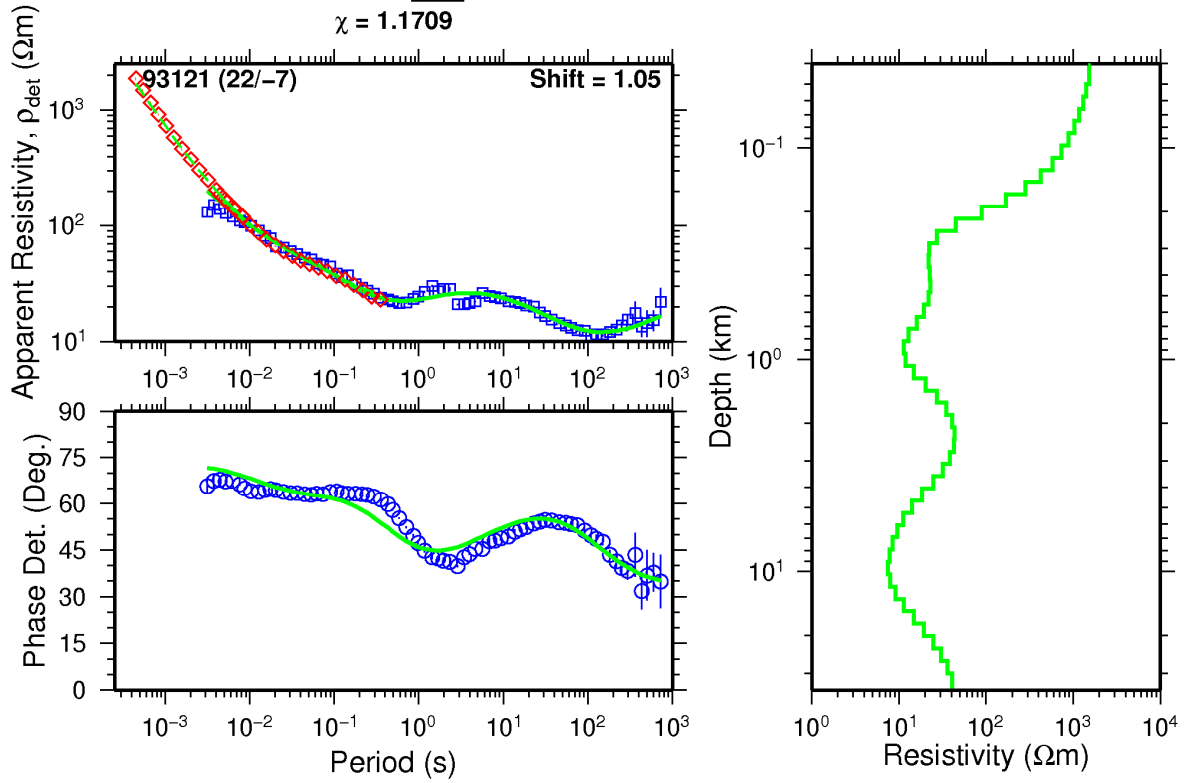
Skrá: THR115.EDI



APPENDIX III: 1D models of the joint inversion for all the TEM and MT data

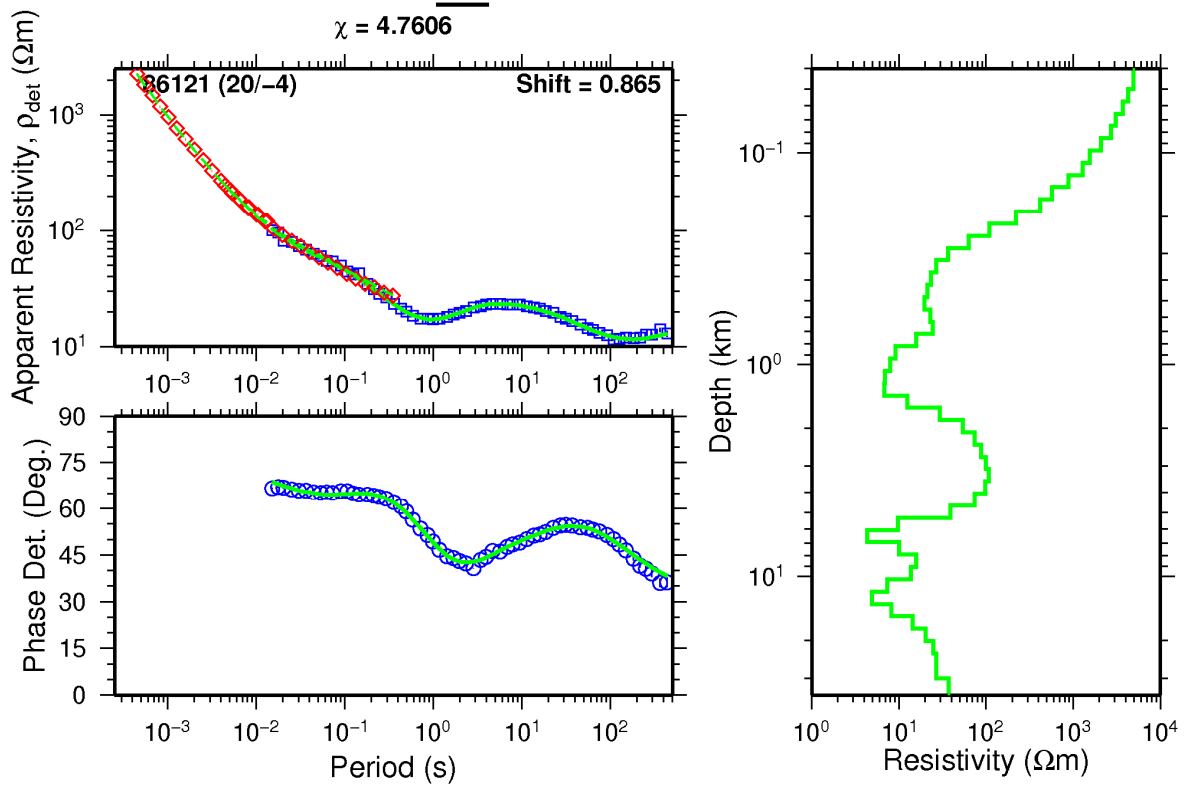
TE017_out4

$\chi = 1.1709$



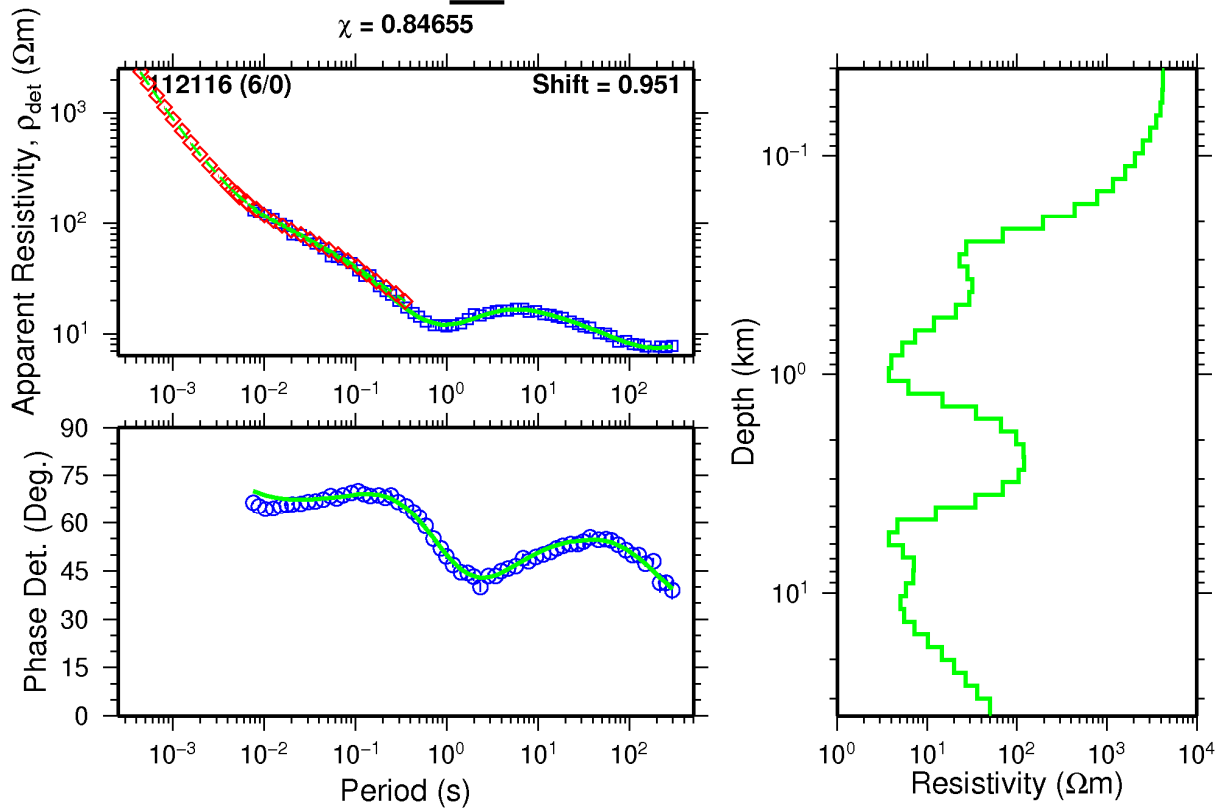
TE018_out

$\chi = 4.7606$



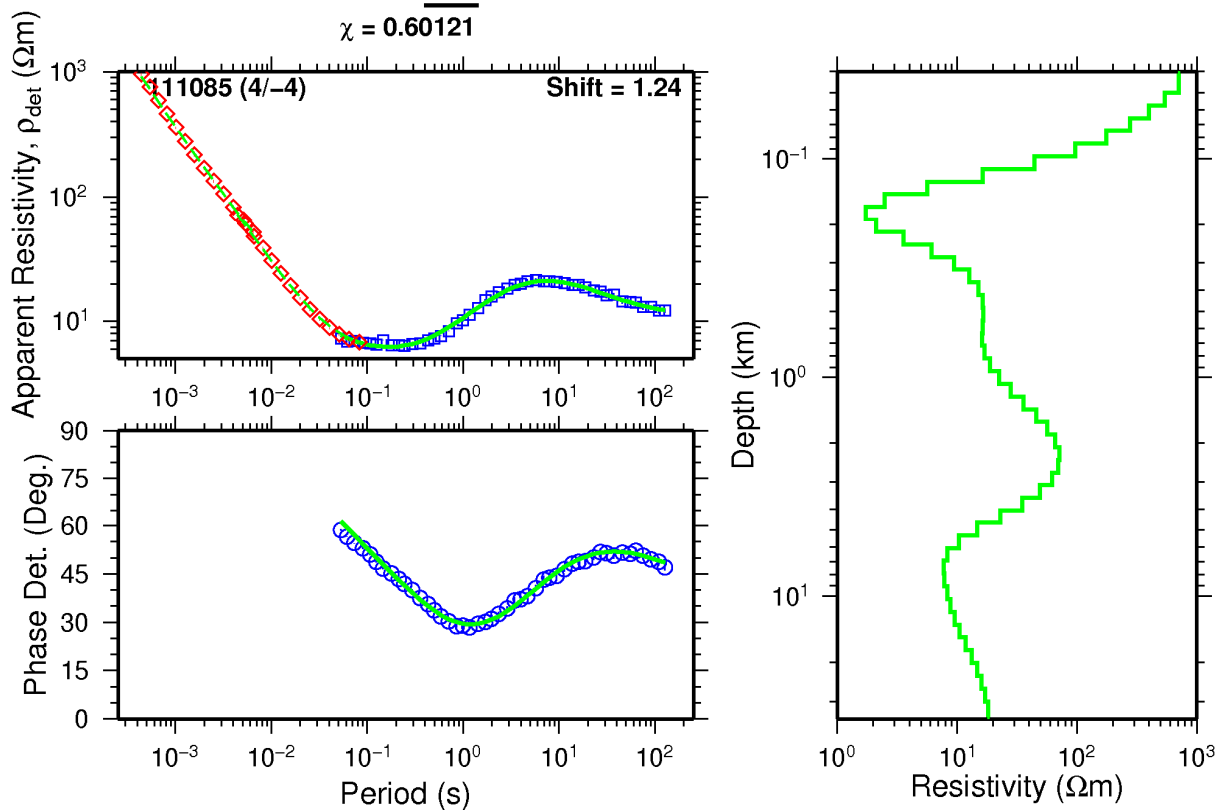
TE029_out

$\chi = 0.84655$



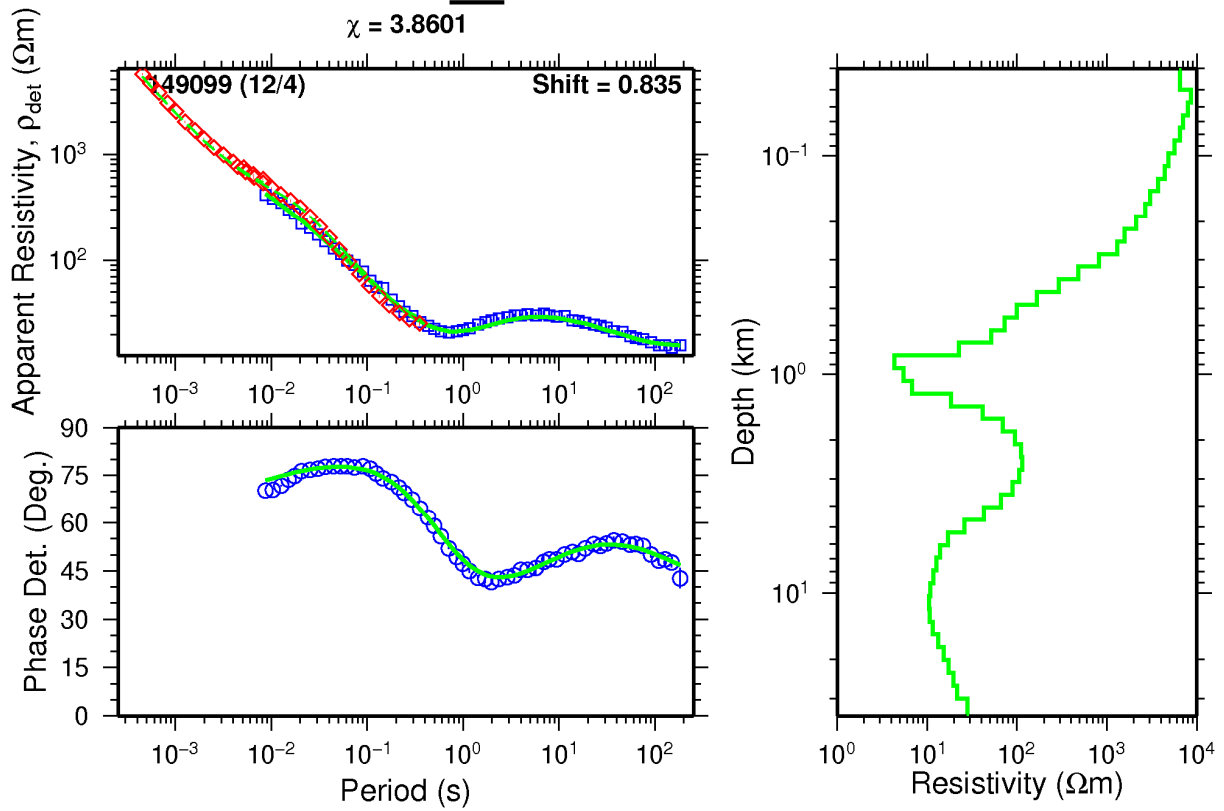
TE033_out2

$\chi = 0.60121$



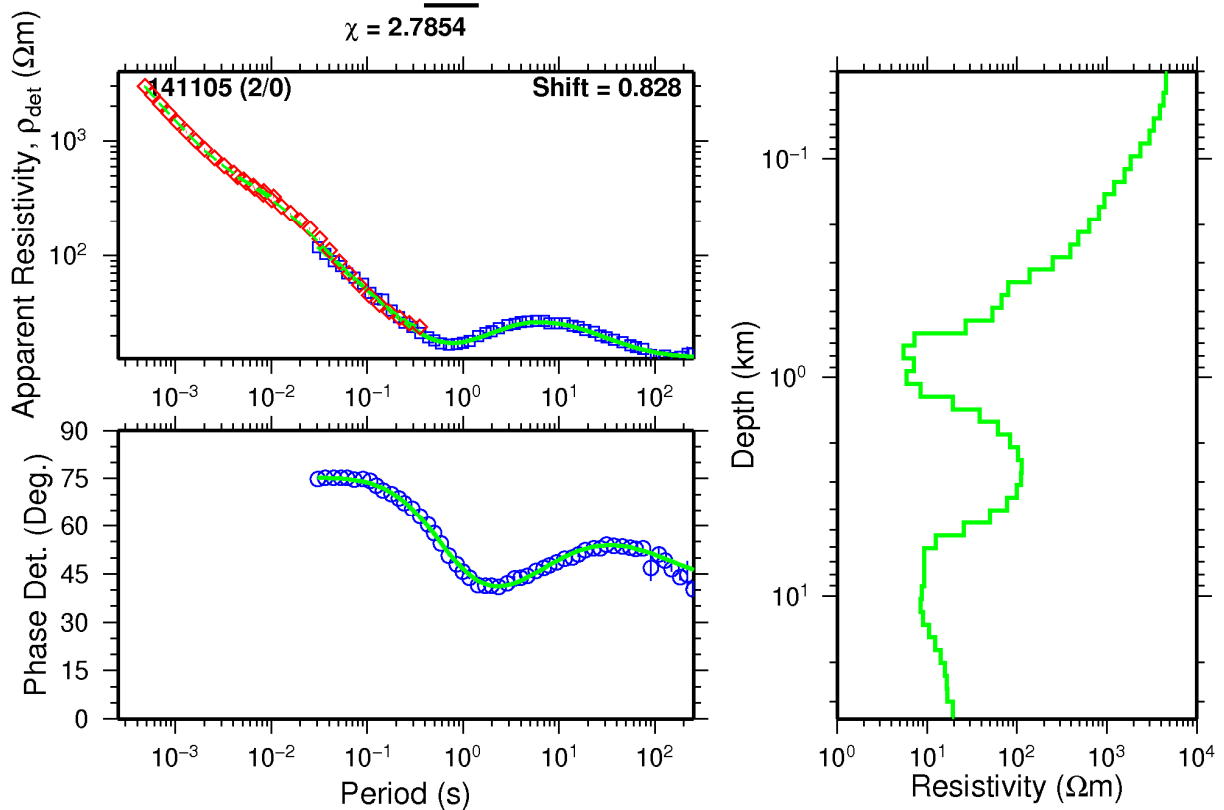
TE039_out

$\chi = 3.8601$



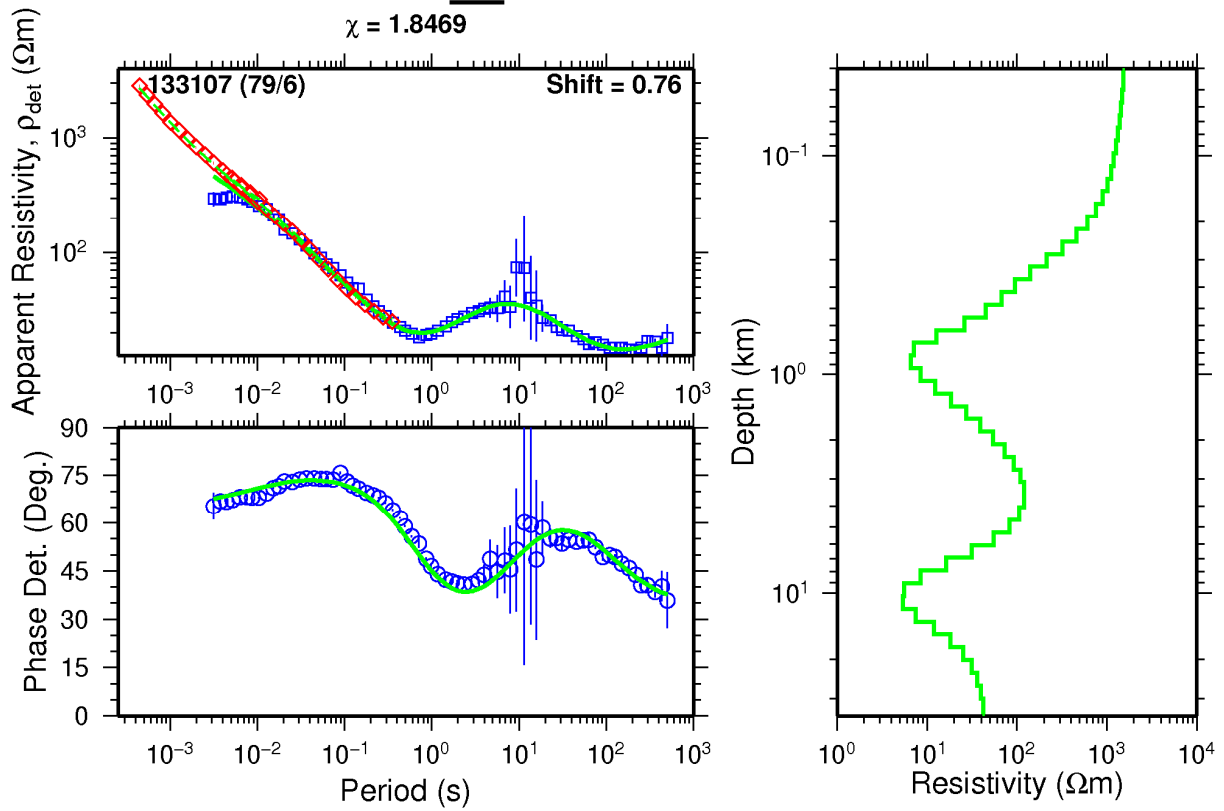
TE041_out2

$\chi = 2.7854$



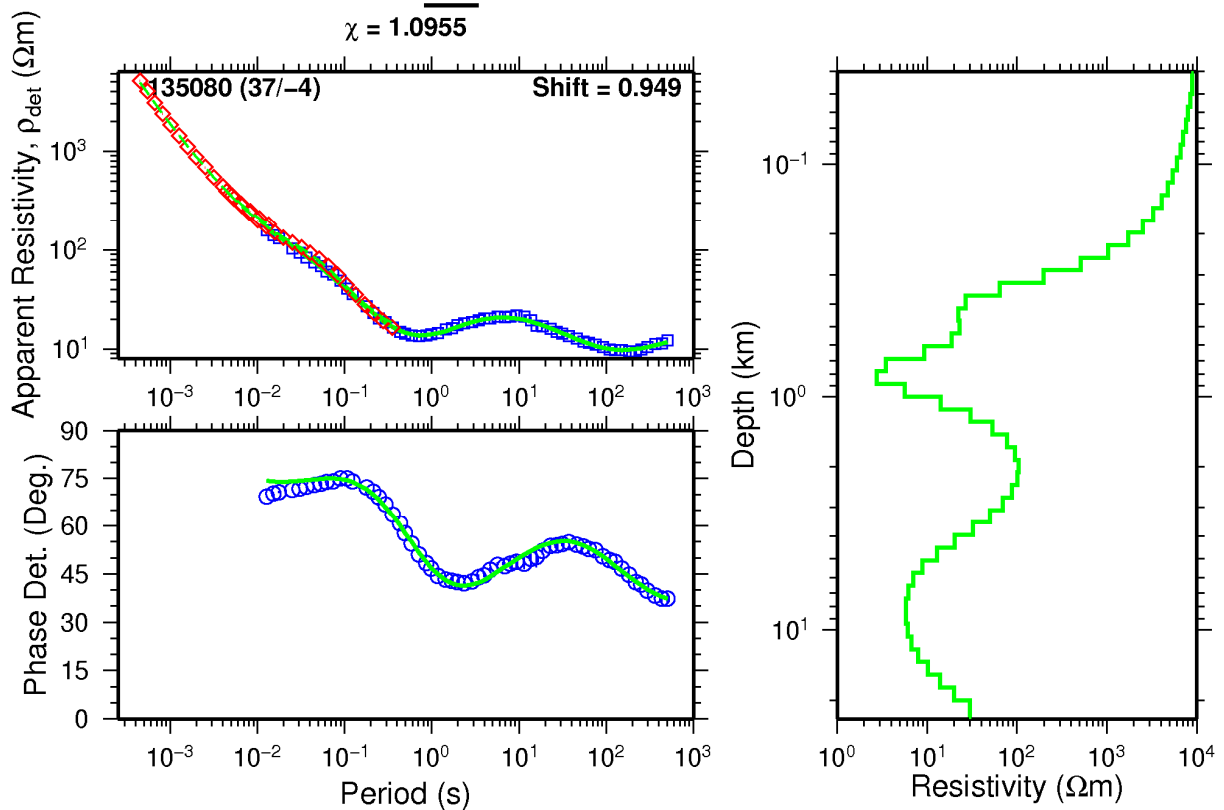
TE043_out

$\chi = 1.8469$



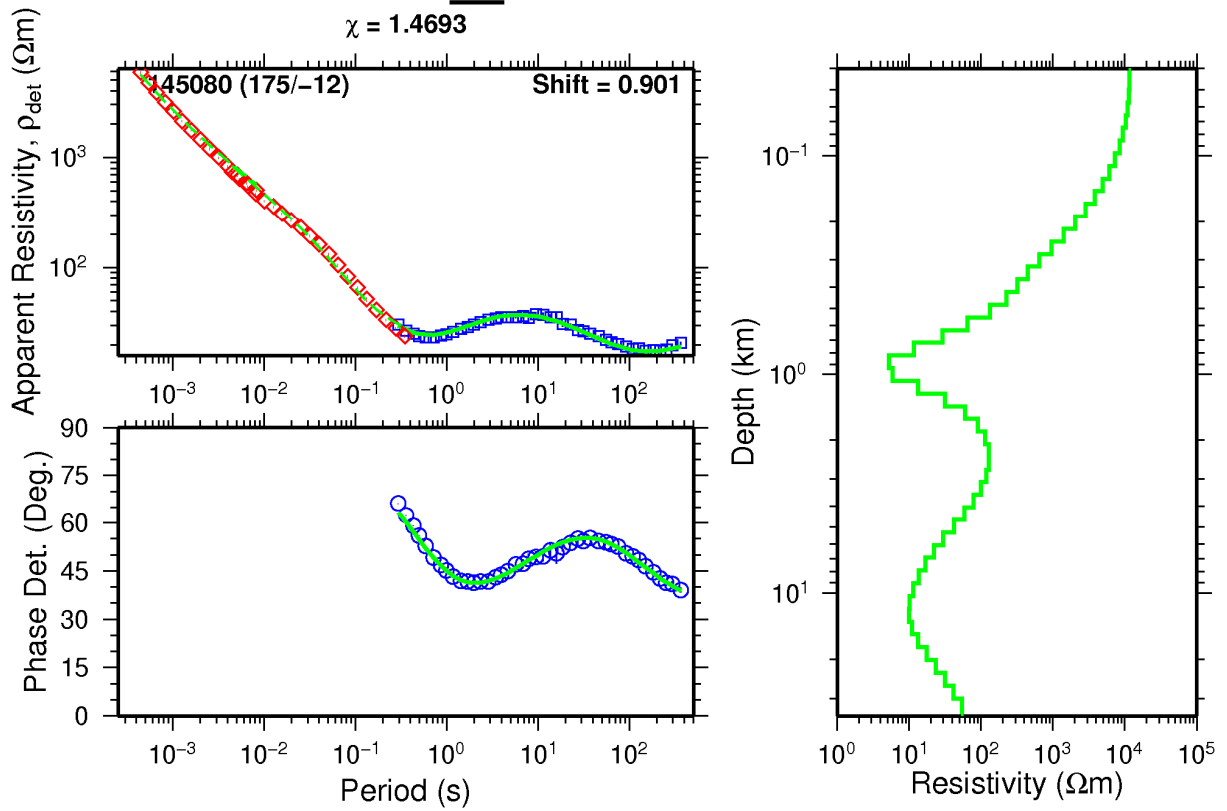
TE045_out2

$\chi = 1.0955$



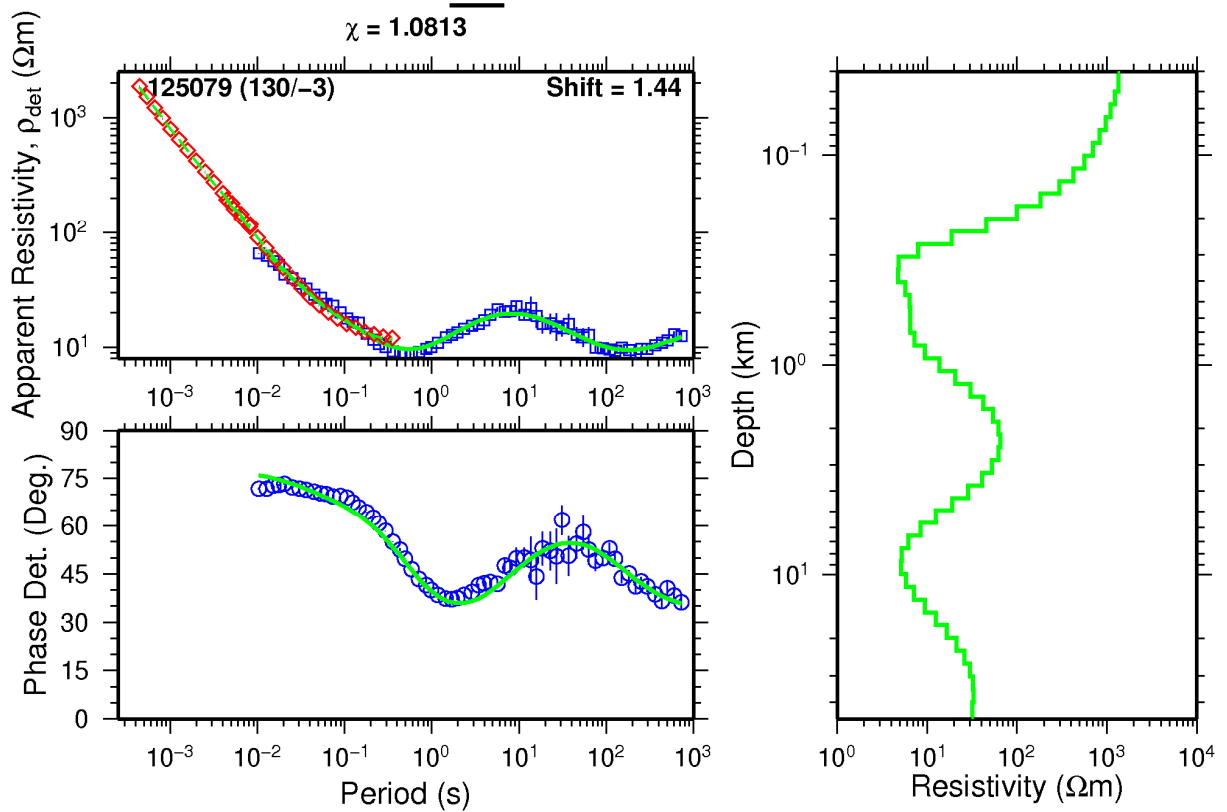
TE046_out

$\chi = 1.4693$



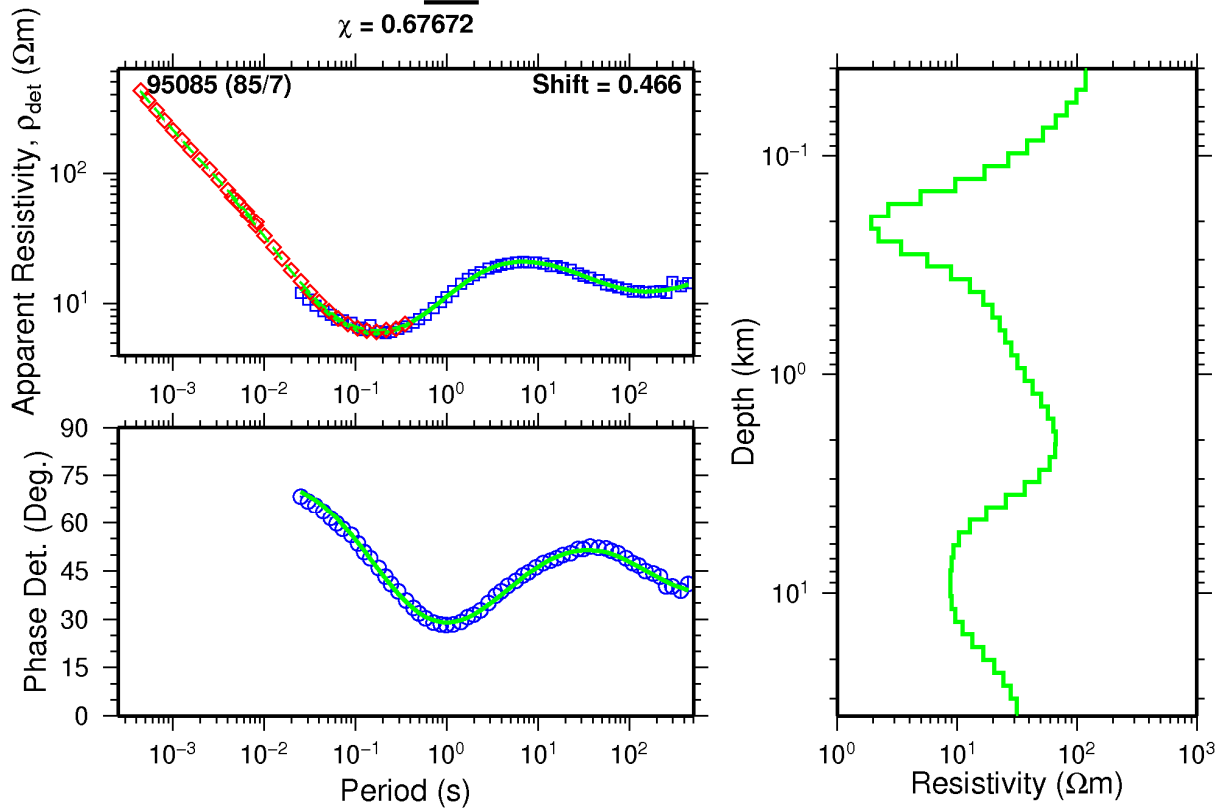
TE047_out

$\chi = 1.0813$



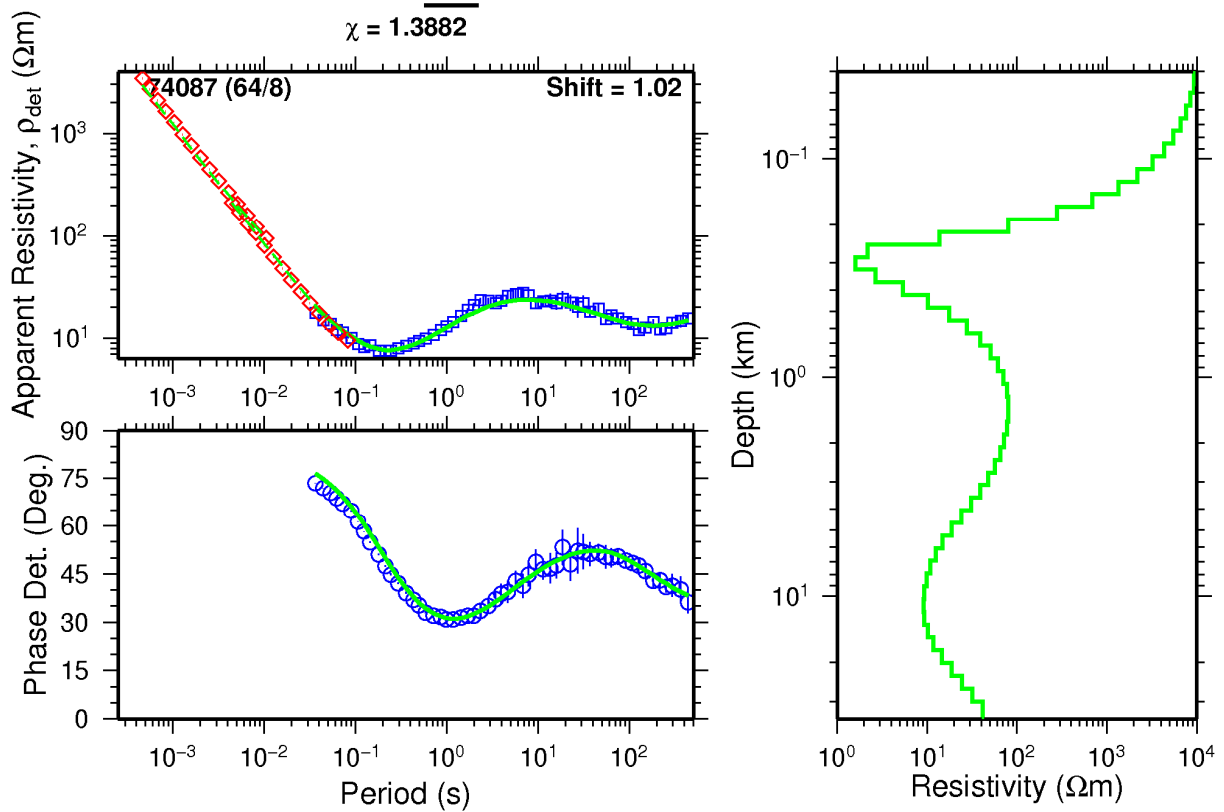
TE115_out2

$\chi = 0.67672$



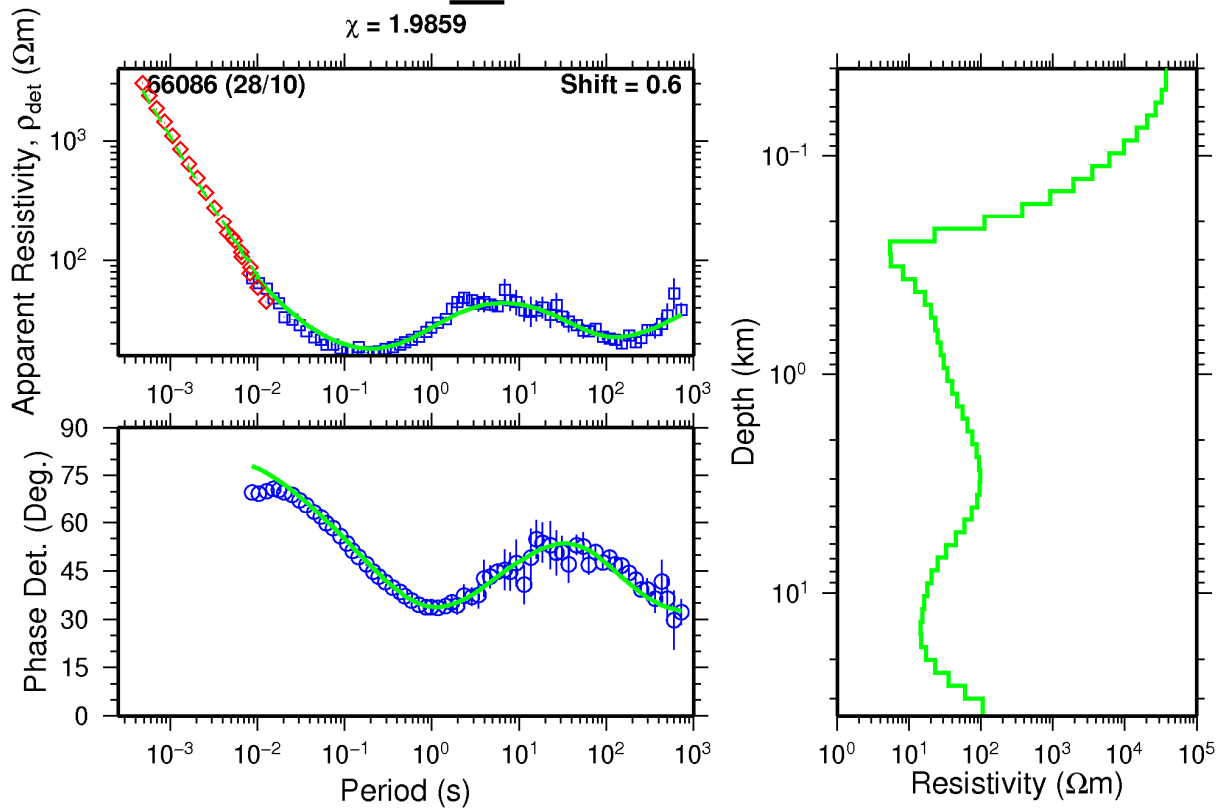
TE120_out2

$\chi = 1.3882$



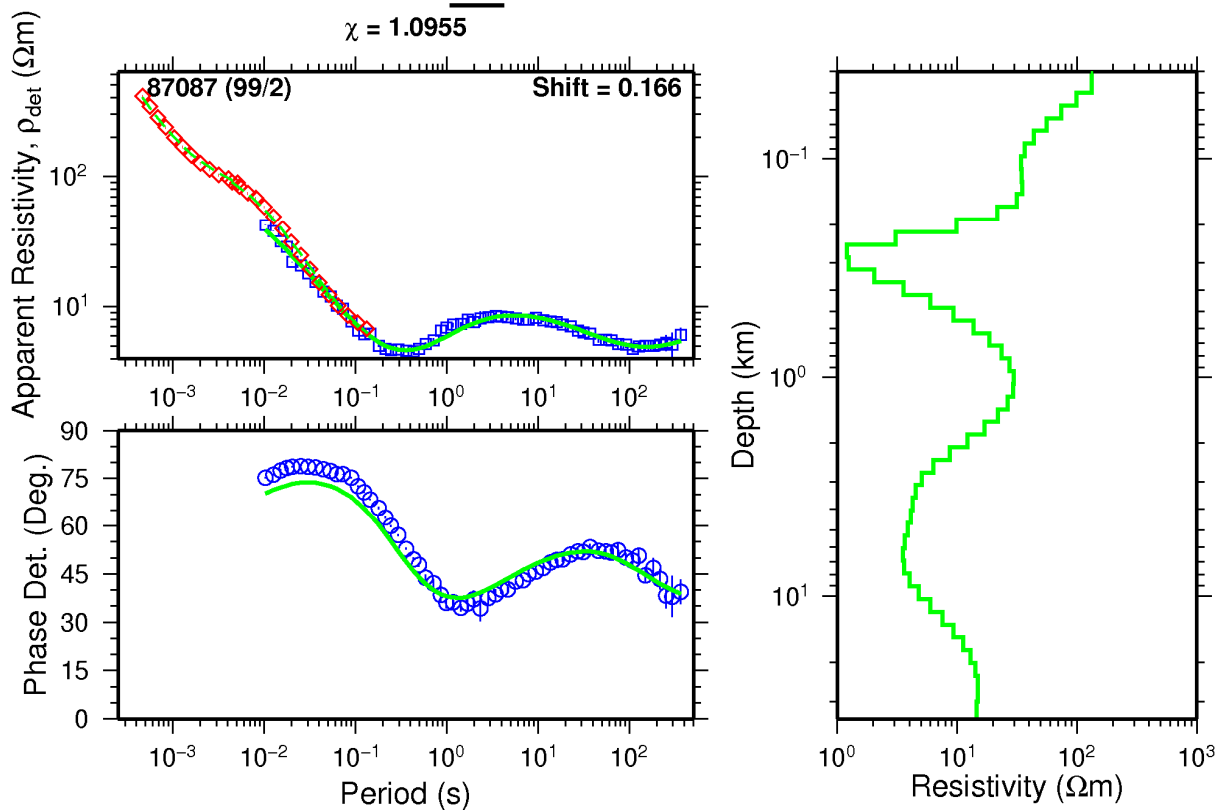
TE121_out

$\chi = 1.9859$



TE122_out

$\chi = 1.0955$



TE125_out

$\chi = 1.3407$

