



**UNITED NATIONS
UNIVERSITY**

GEOTHERMAL TRAINING PROGRAMME
Orkustofnun, Grensasvegur 9,
IS-108 Reykjavik, Iceland

Reports 2012
Number 14

**APPENDICES TO THE REPORT:
GEOPHYSICAL EXPLORATION OF HIGH-TEMPERATURE
GEOTHERMAL AREAS USING RESISTIVITY METHODS
CASE STUDY: THEISTAREYKIR AREA, NE-ICELAND**

by

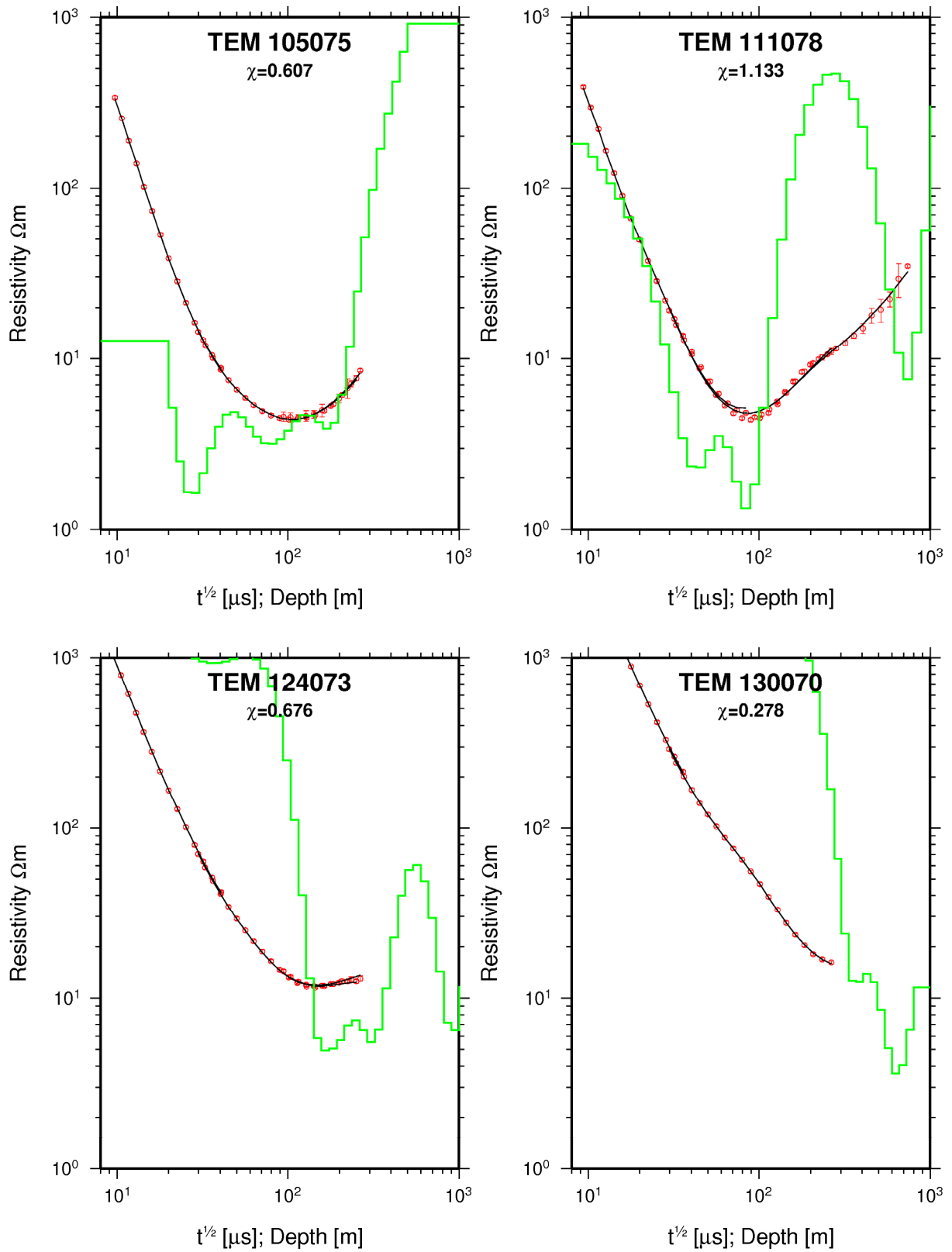
Eriya Kahwa

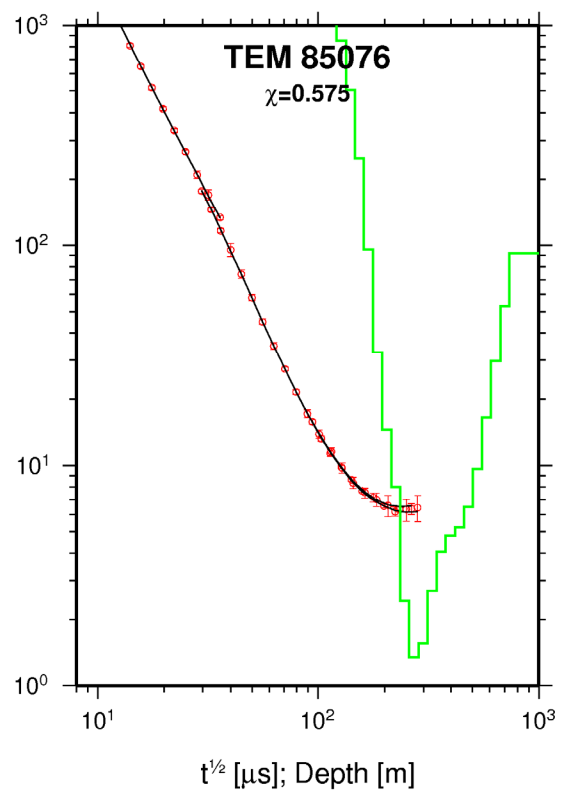
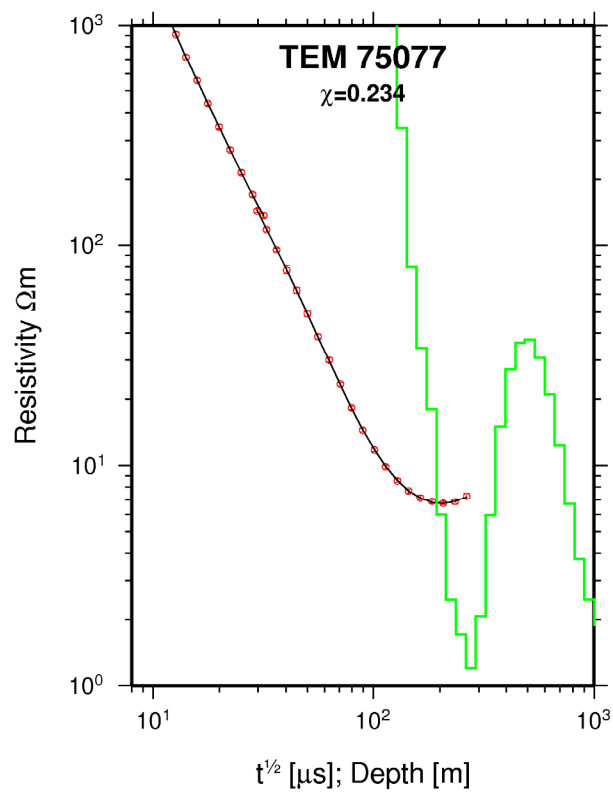
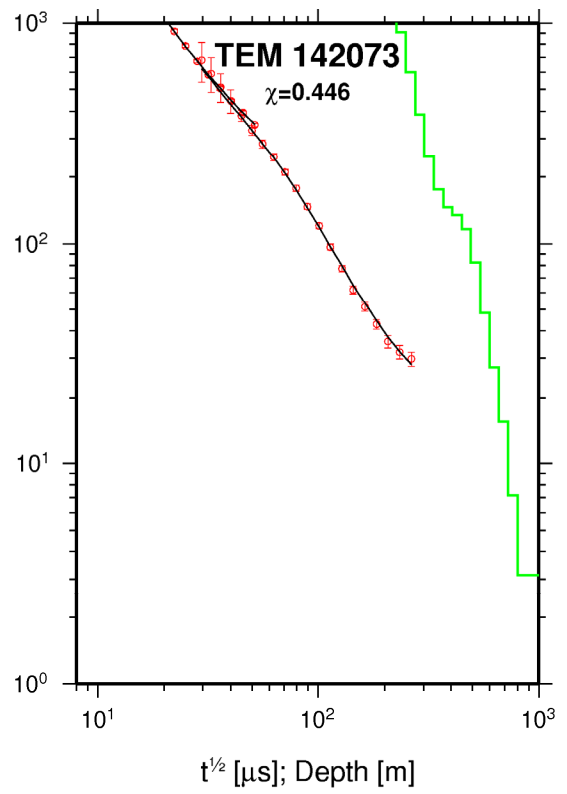
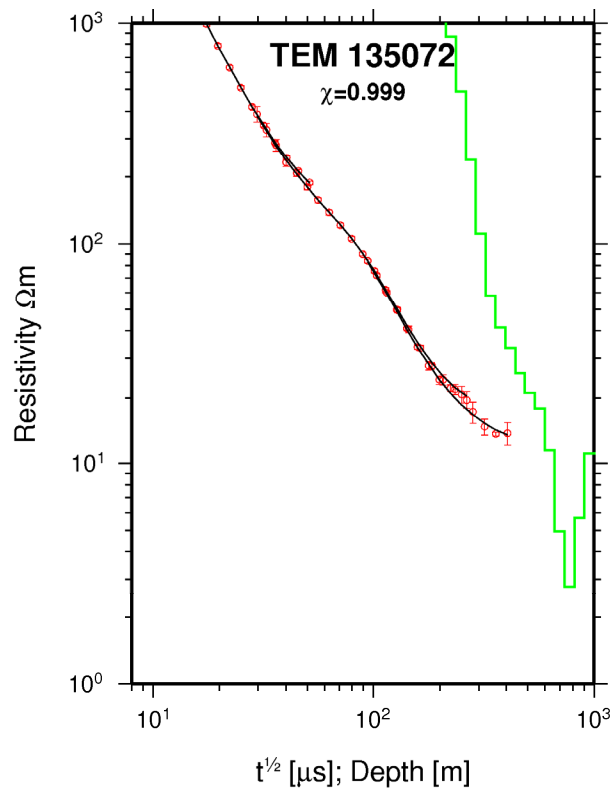
Ministry of Energy and Mineral Development
Department of Geological Survey and Mines
P.O.Box 9, Entebbe
UGANDA
kahwaeriya@gmail.com

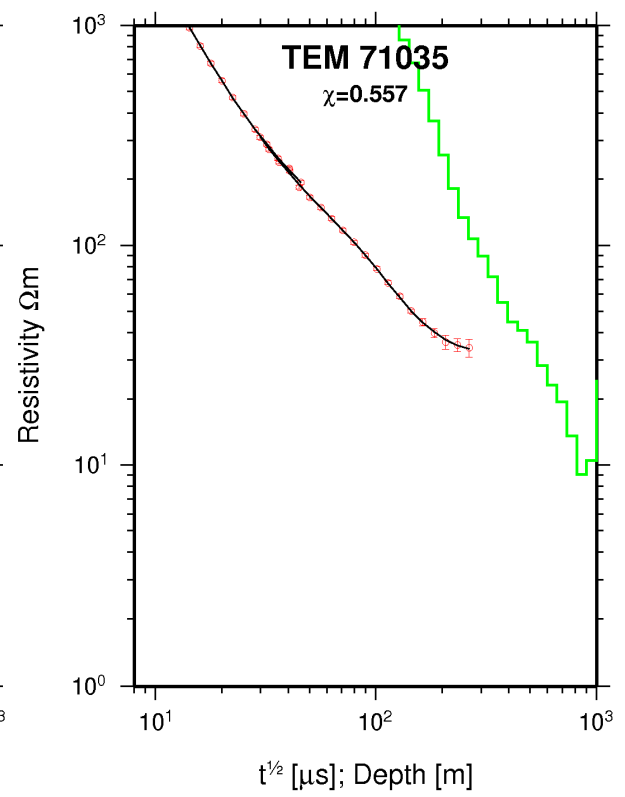
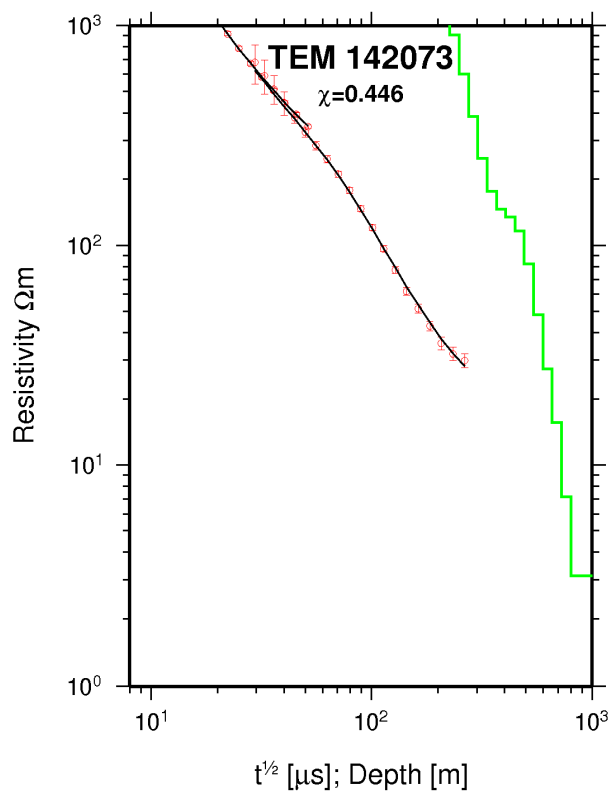
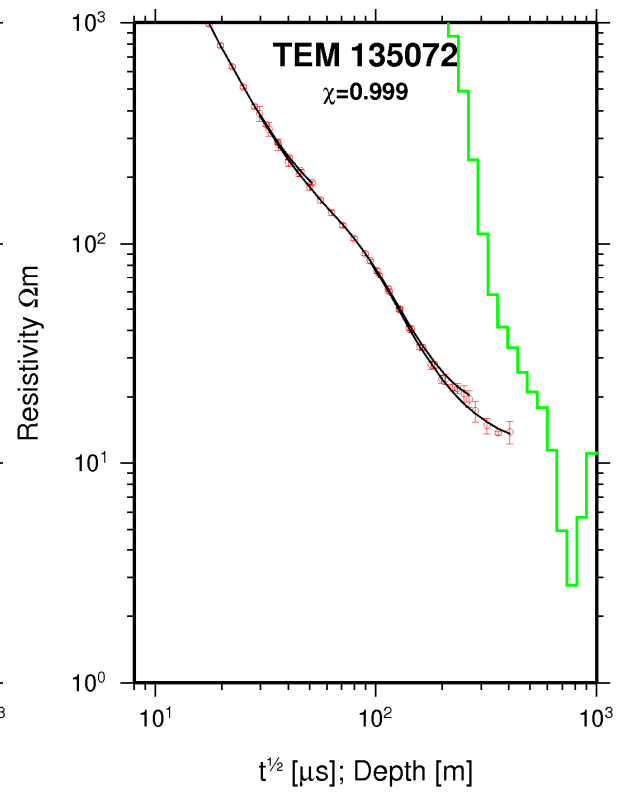
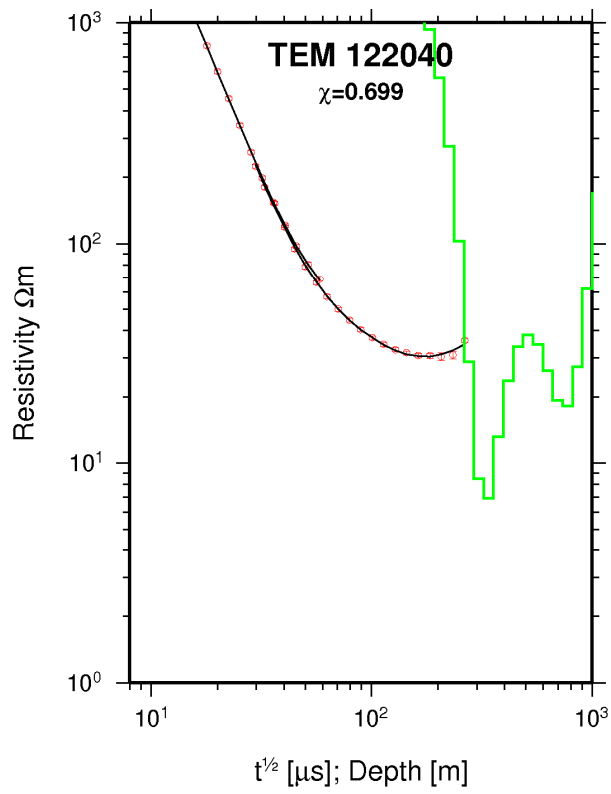
United Nations University
Geothermal Training Programme
Reykjavík, Iceland
Published in 2012

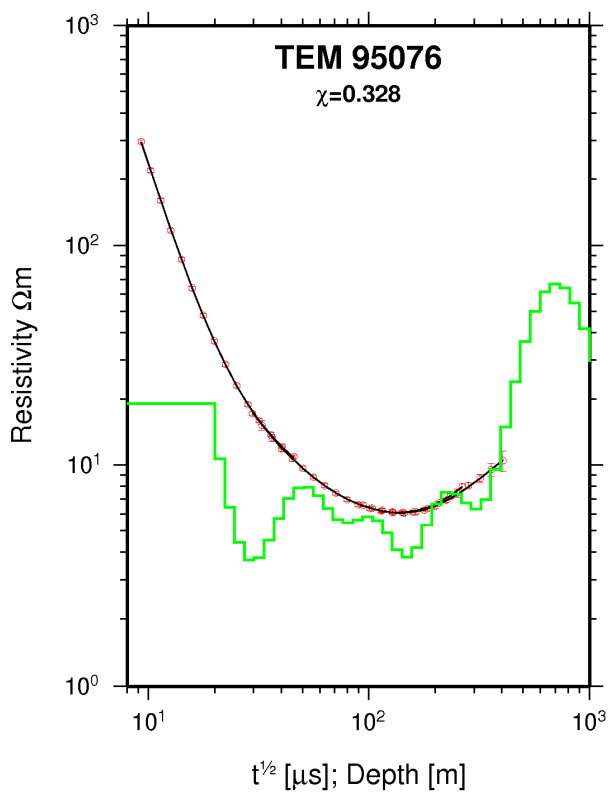
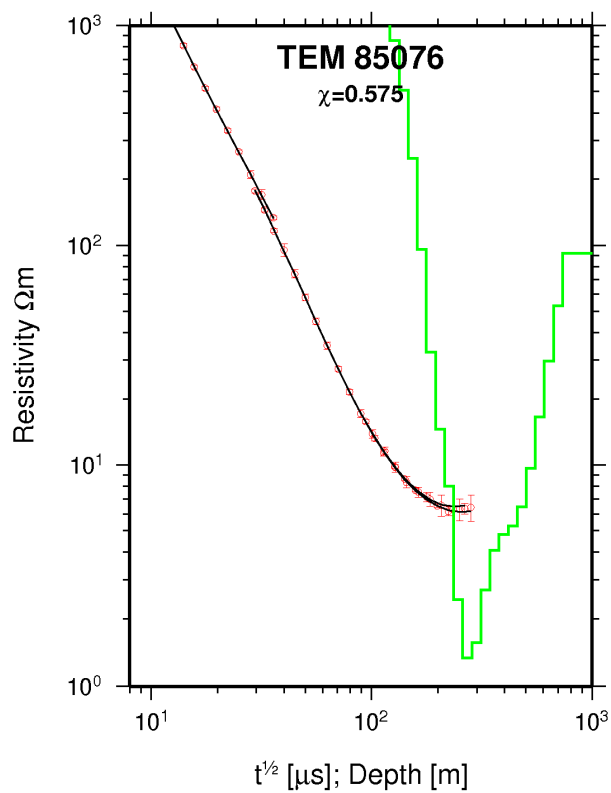
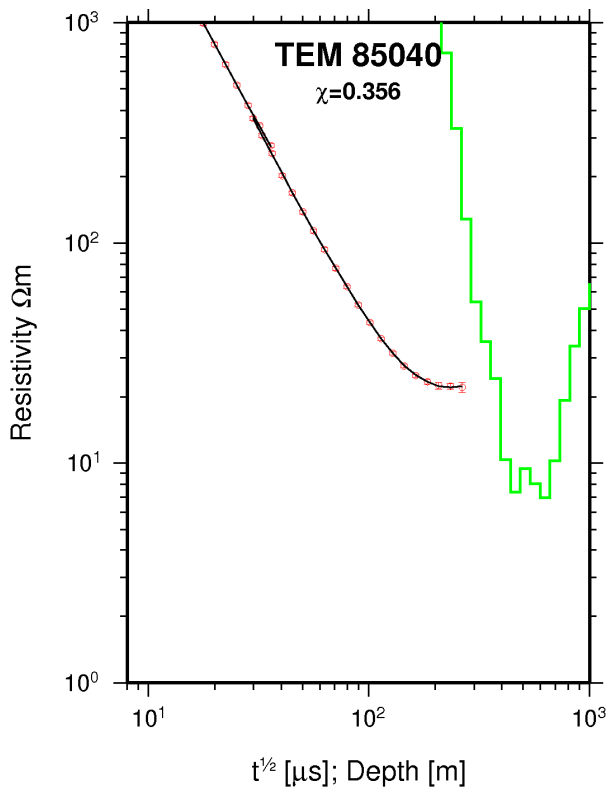
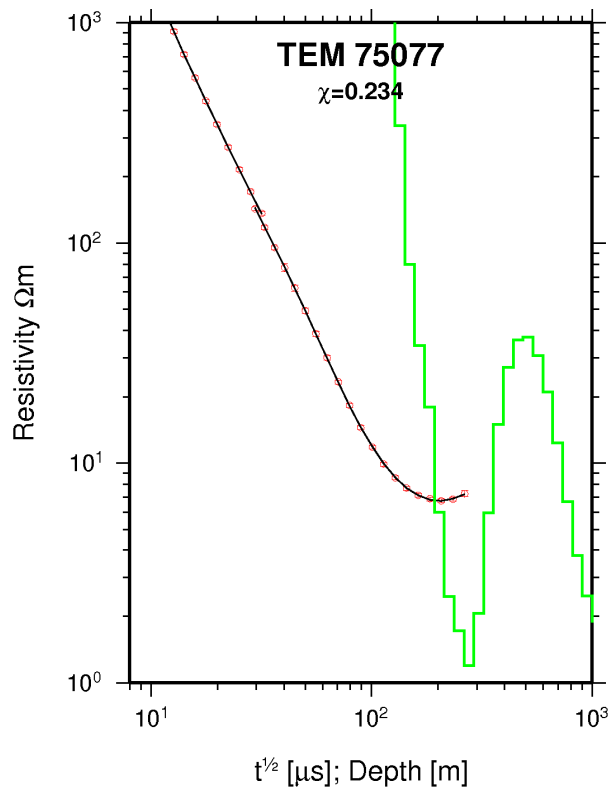
These are appendices to the report “*Geophysical exploration of high-temperature geothermal areas using resistivity methods, Case study: Theistareykir area – NE Iceland*” by Eriya Kahwa at the UNU Geothermal Training Programme in 2012. Appendix I shows the TEM data and associated 1D models for the TEM soundings. Appendix II shows the processed data for all the MT soundings. Appendix III contains the 1D models of the joint inversion for the TEM and MT data.

APPENDIX I: TEM data and associated 1D models for the TEM soundings





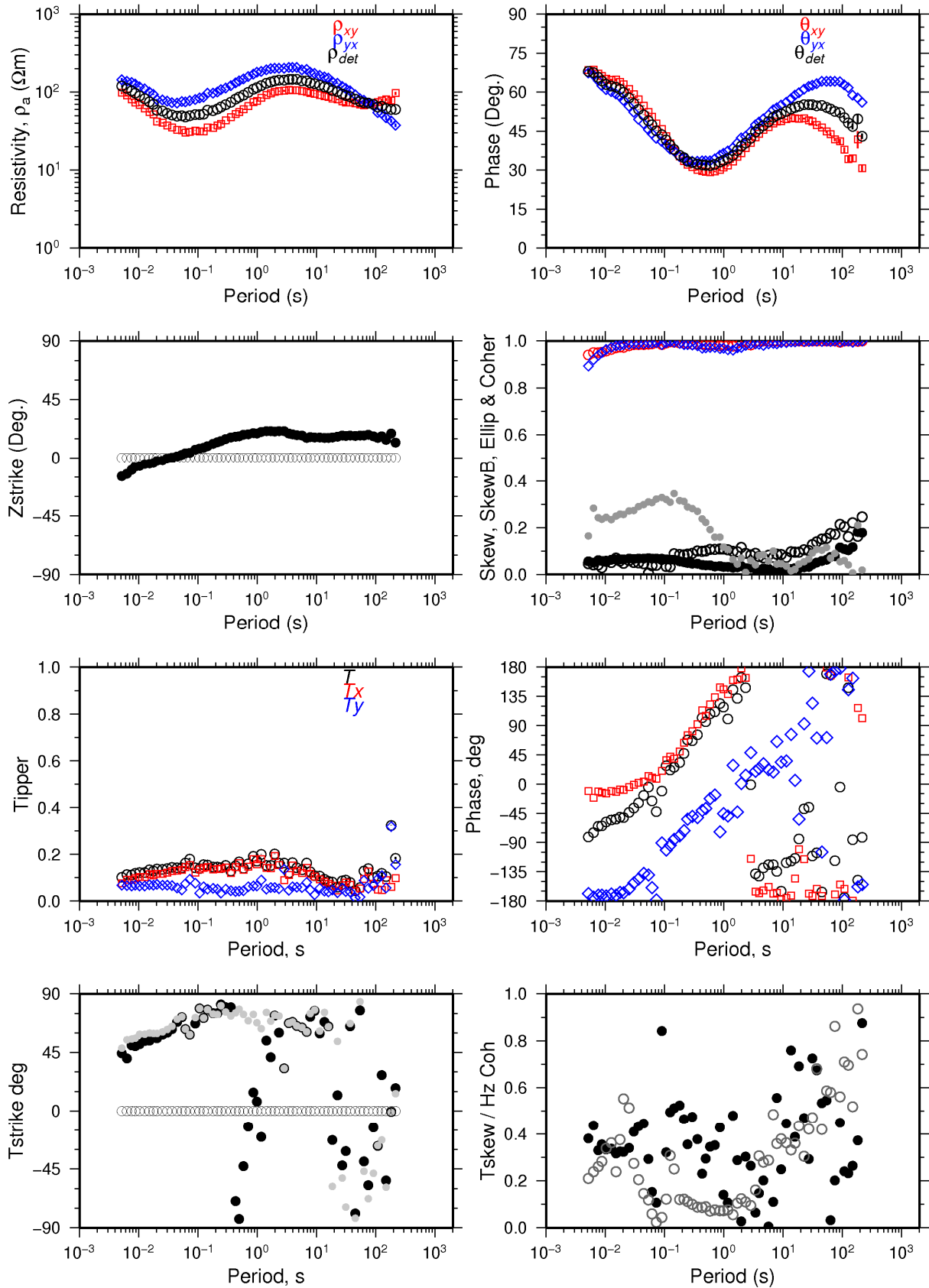




APPENDIX II: Processed data for all the MT soundings

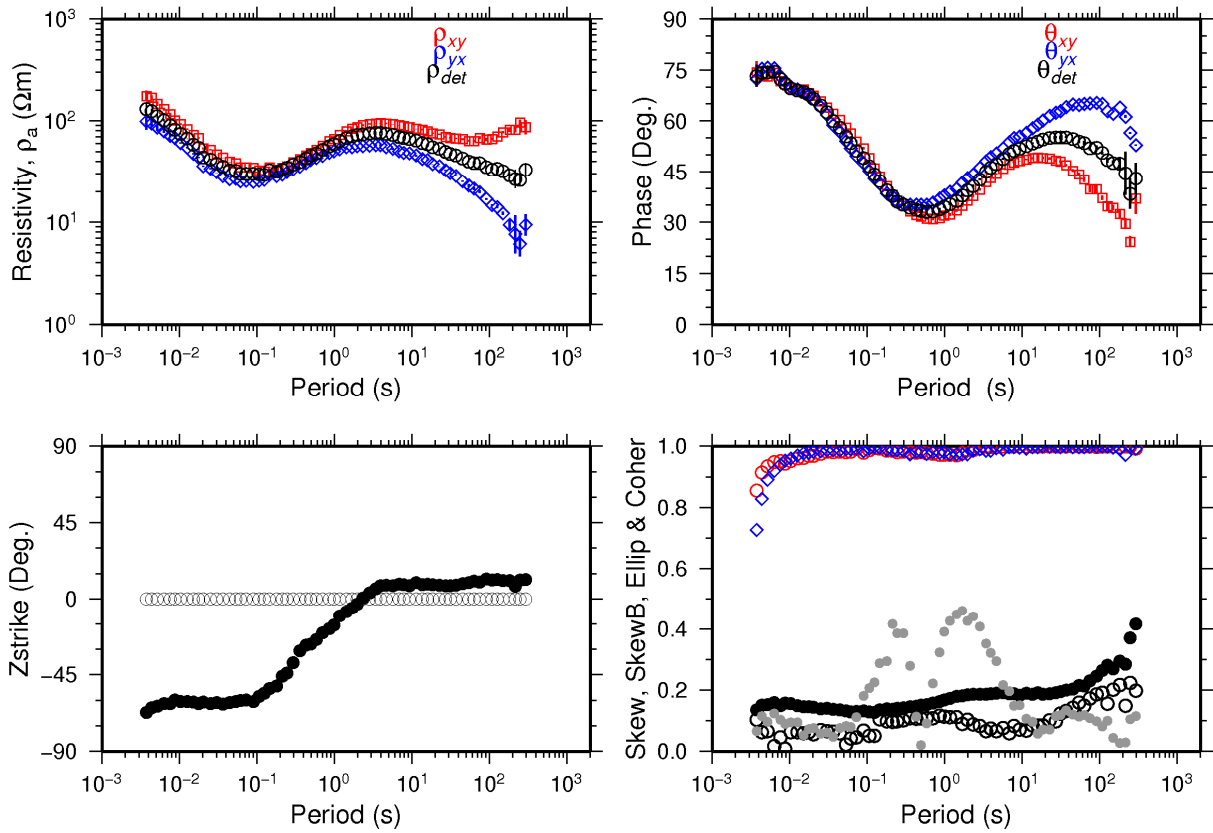
THR005

Skrá: THR005.EDI



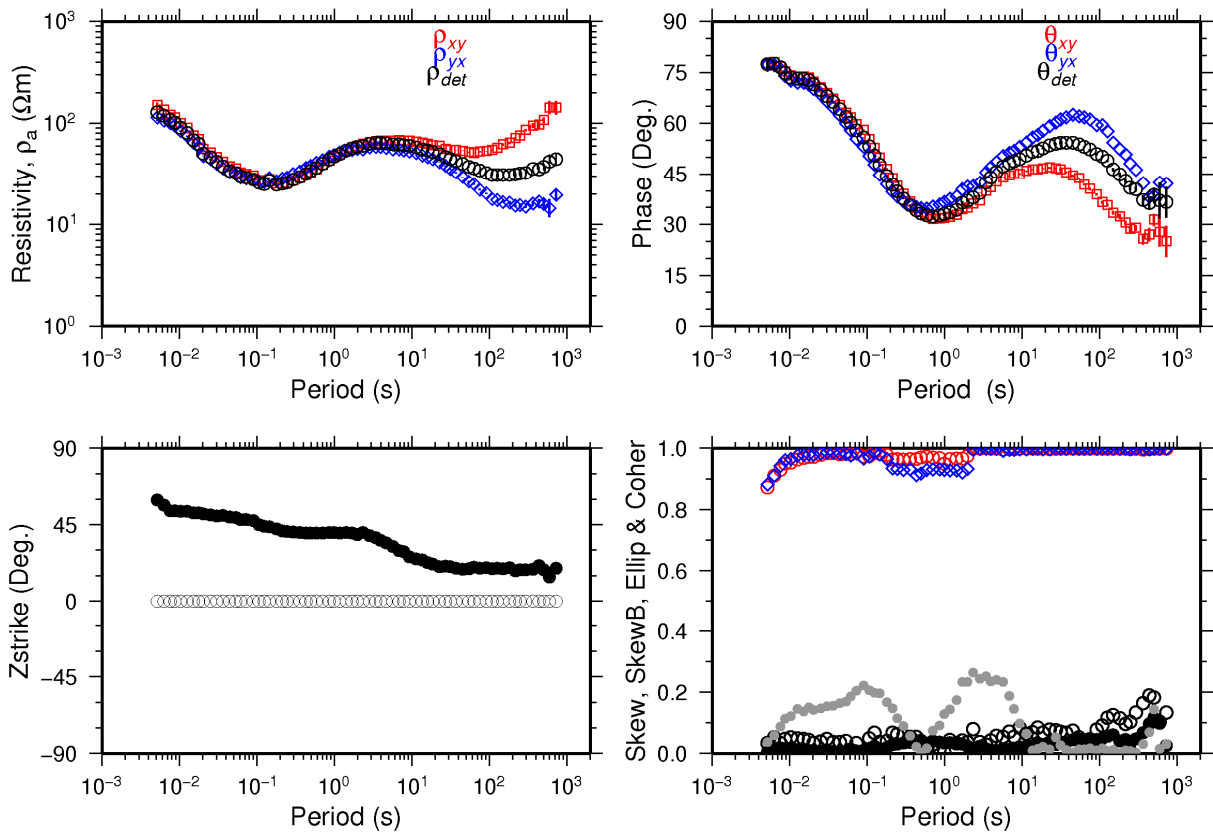
THR006

Skrá: THR006.EDI



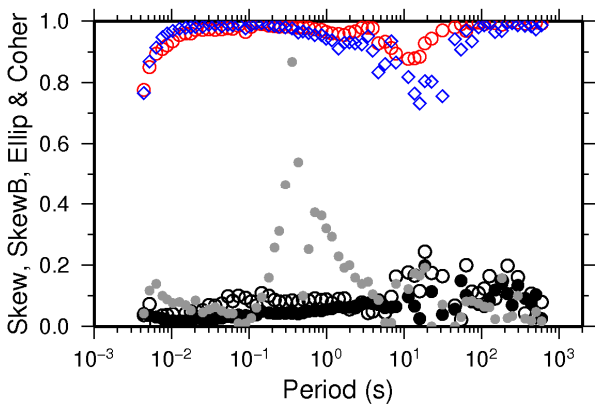
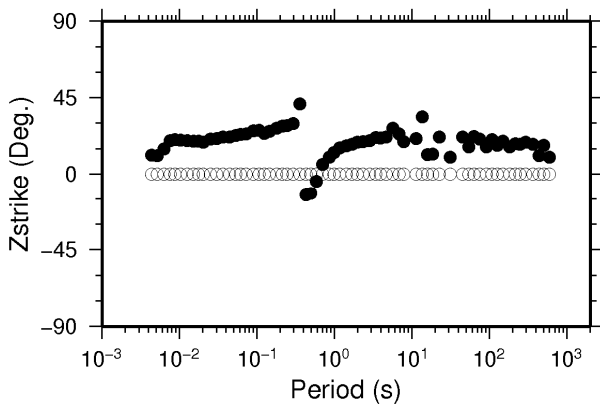
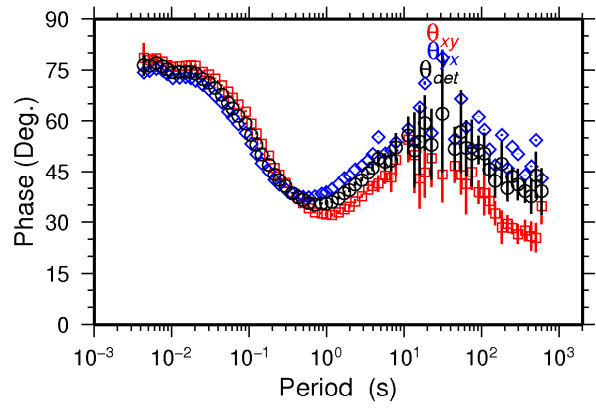
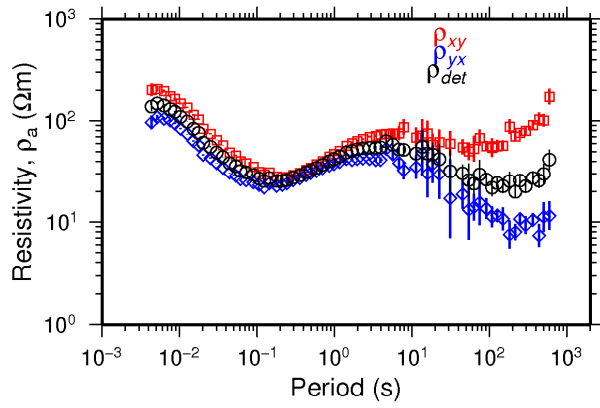
THR019

Skrá: THR019.EDI



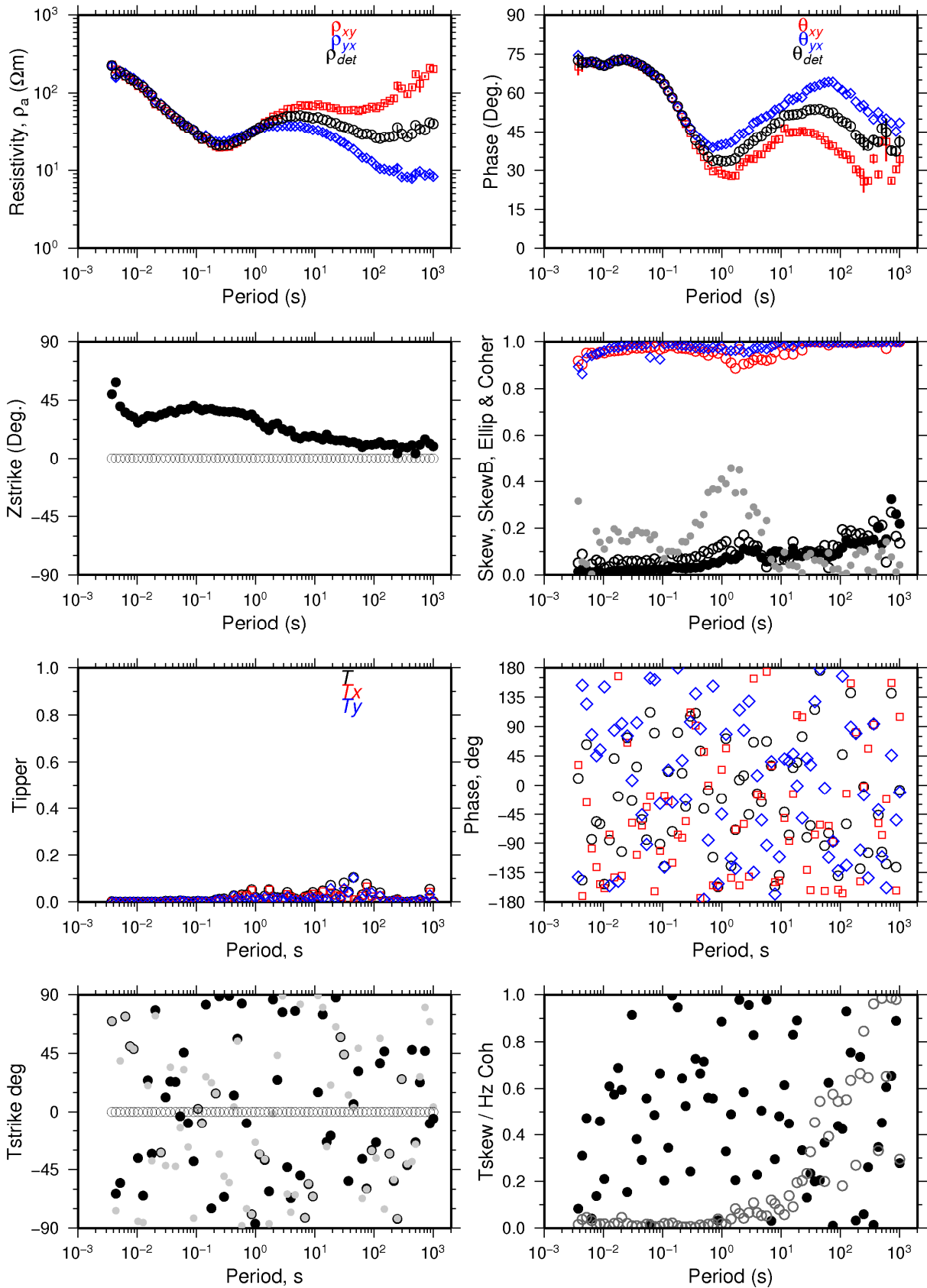
THR048

Skrá: THR048.EDI



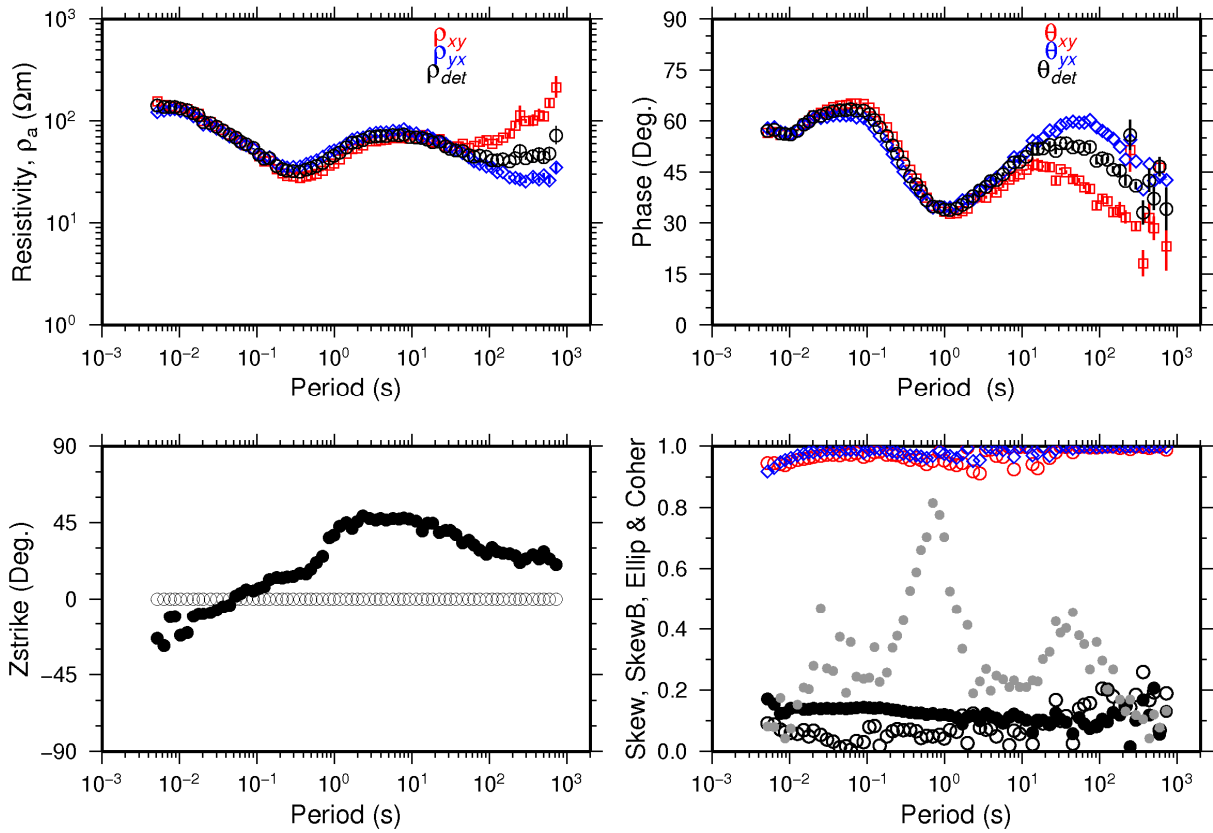
THR055

Skrá: THR055.EDI



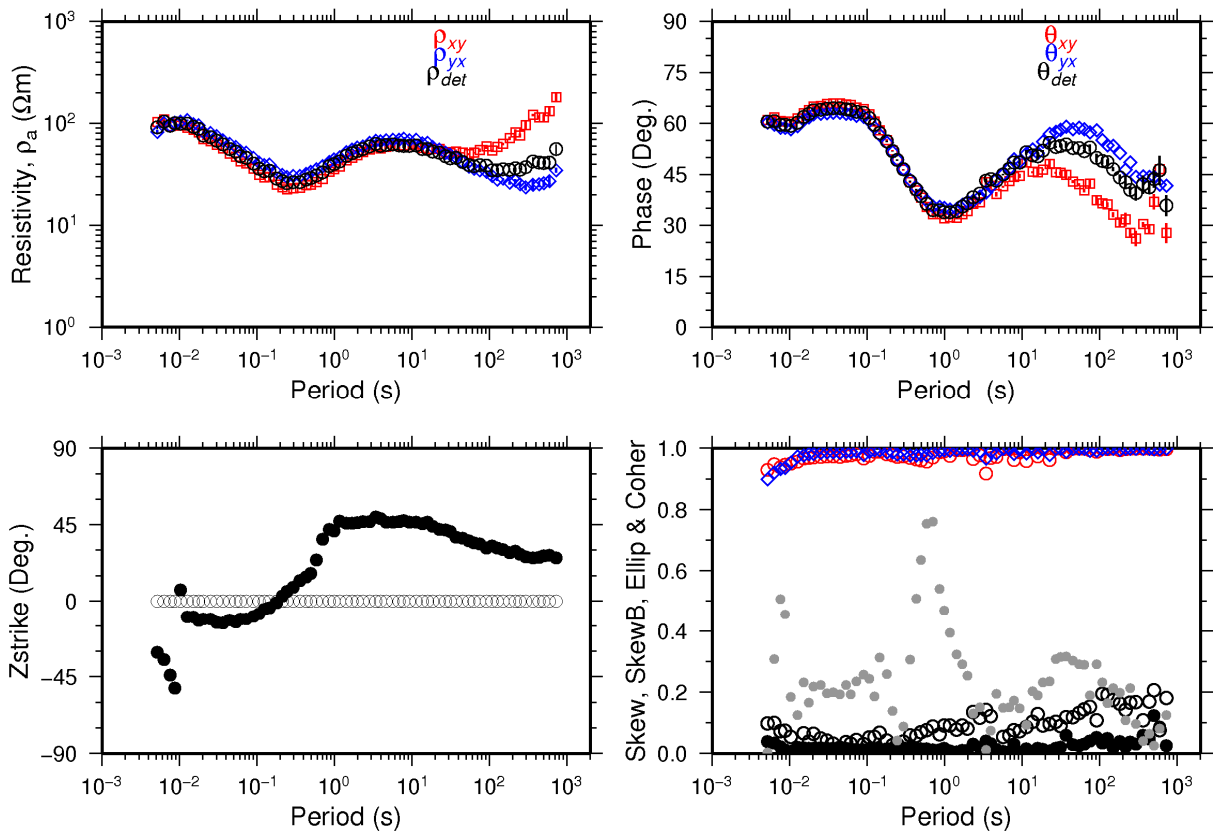
THR056

Skrá: THR056.EDI



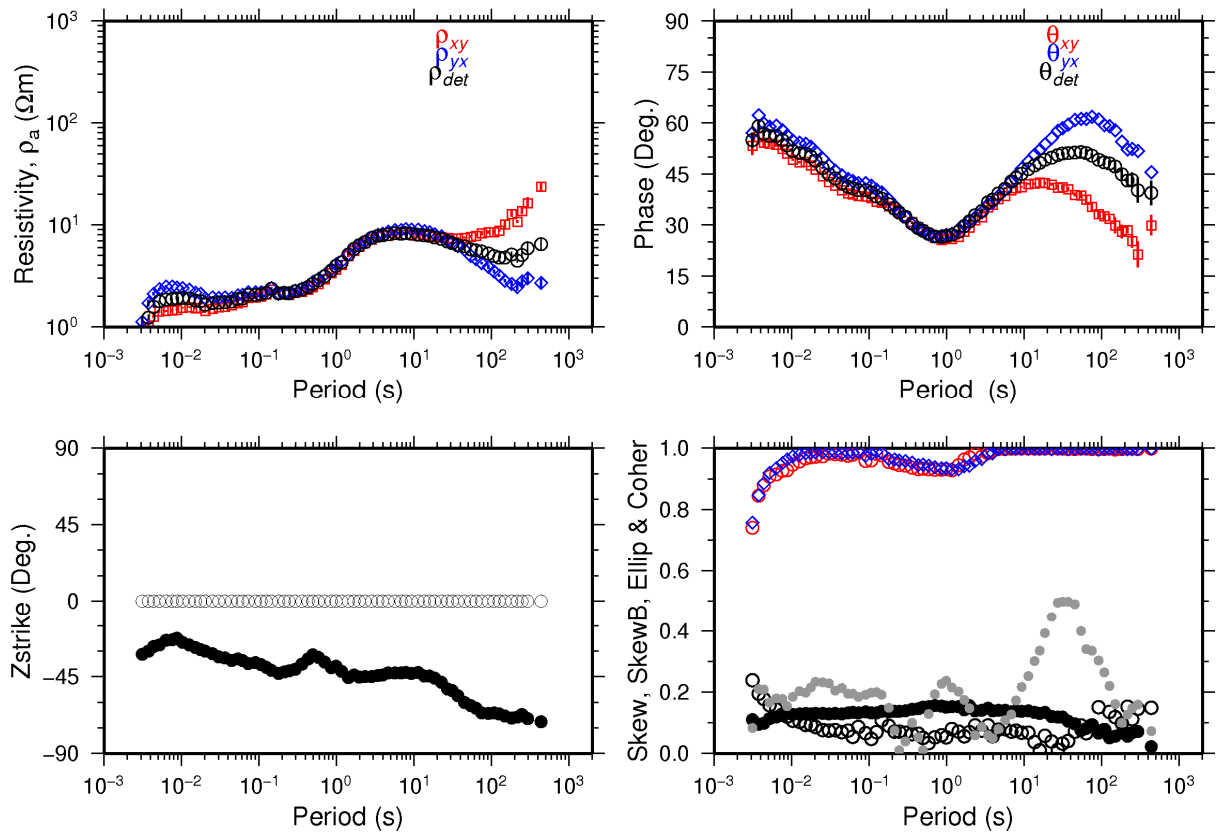
THR057

Skrá: THR057.EDI



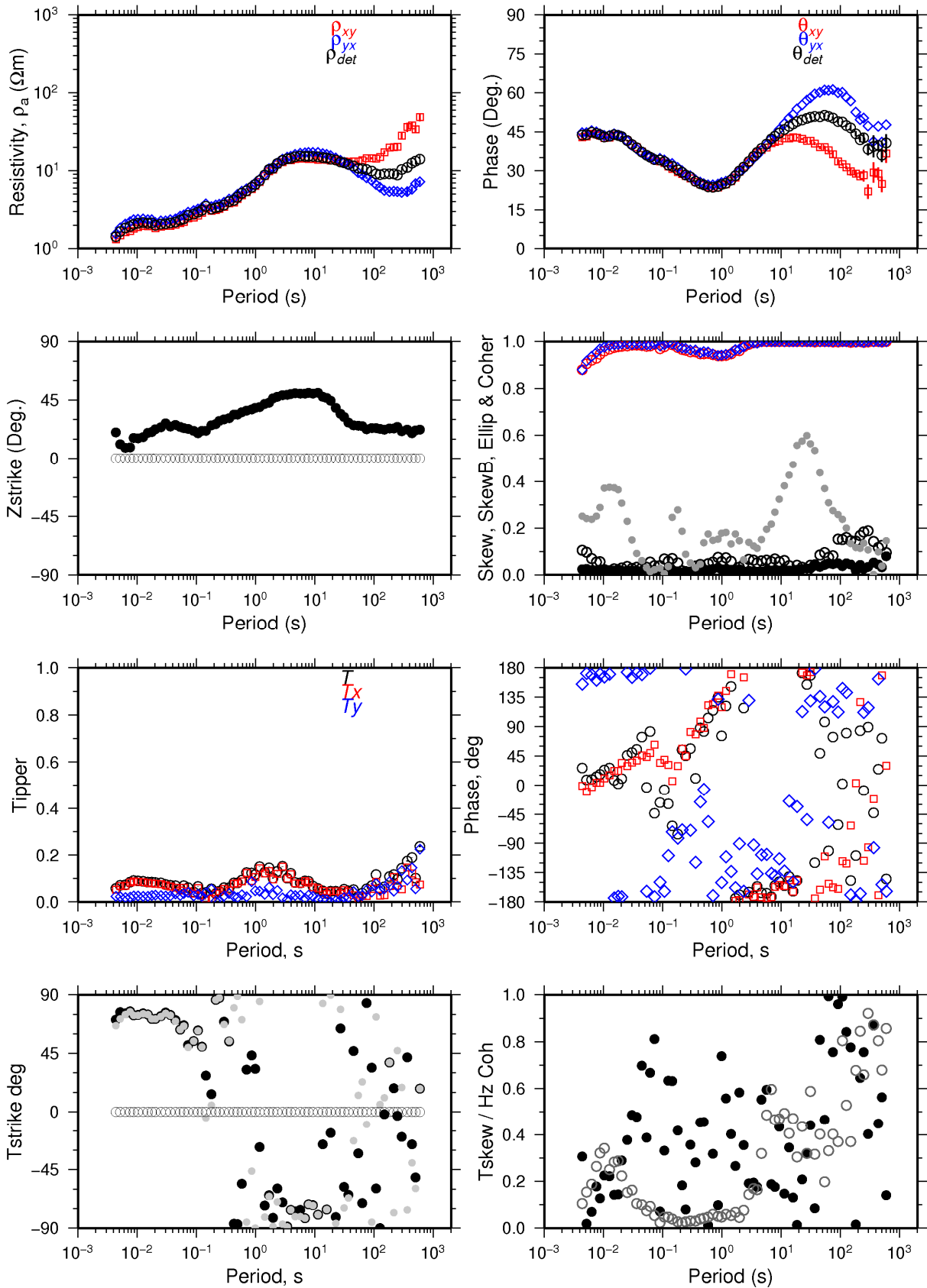
THR101

Skrá: THR101.EDI



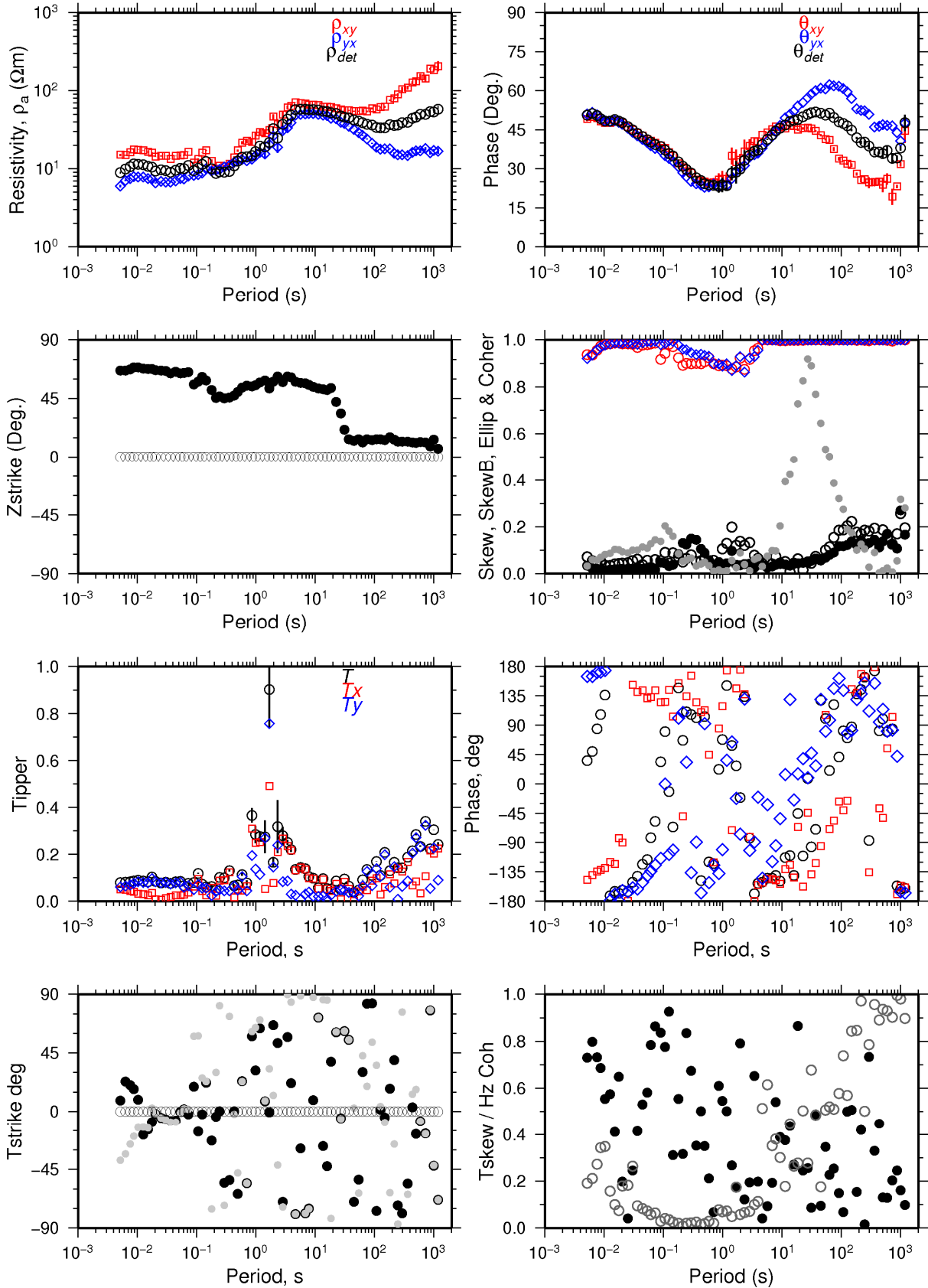
THR102

Skrá: THR102.EDI



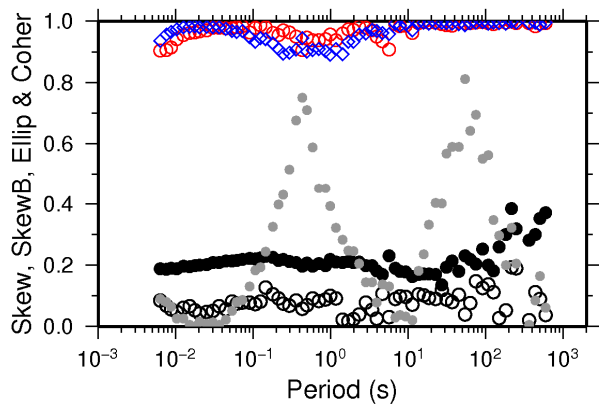
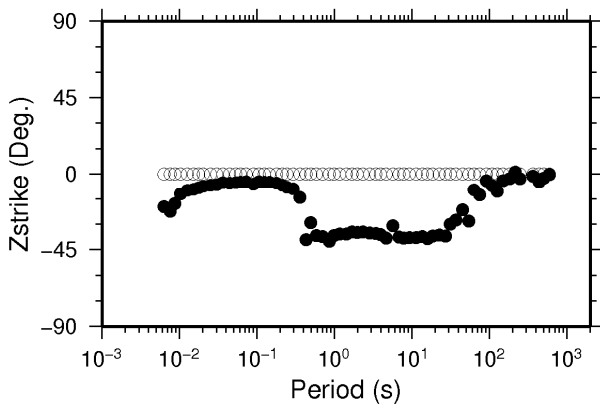
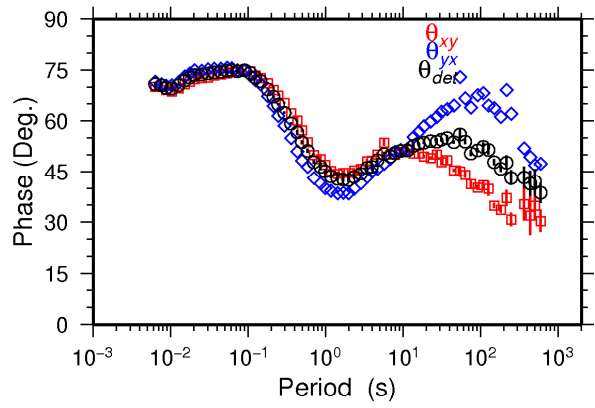
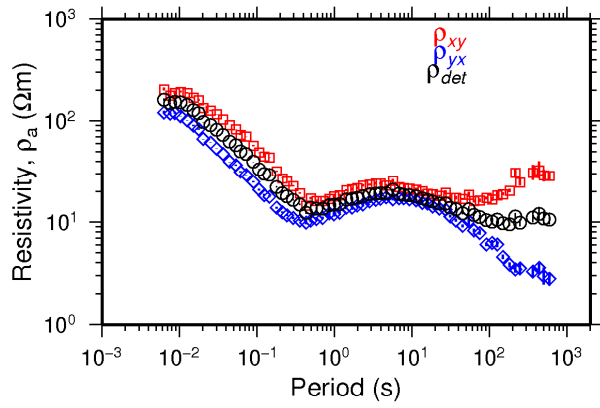
THR107

Skrá: THR107.EDI



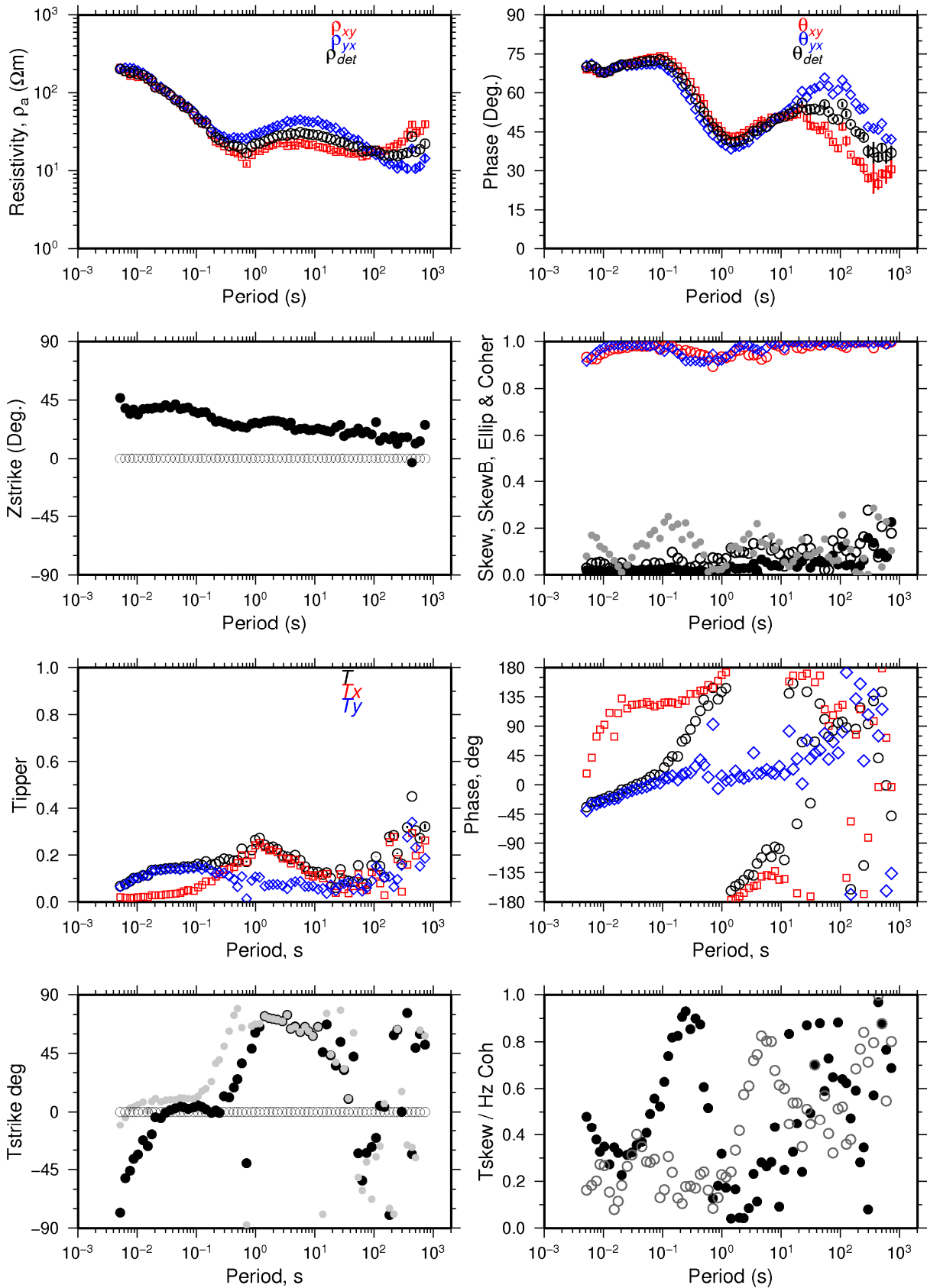
THR108

Skrá: THR108.EDI



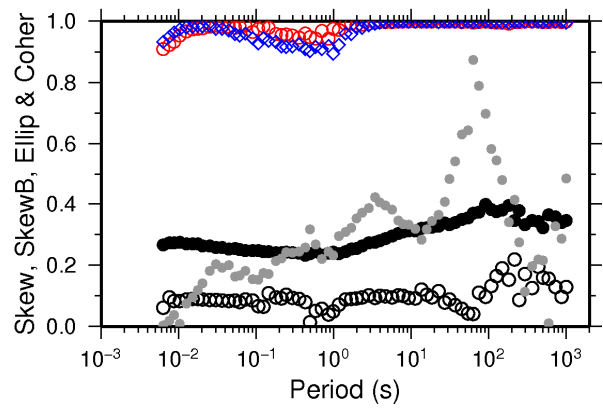
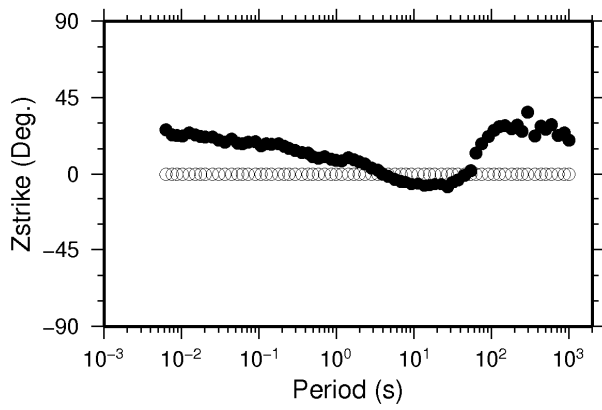
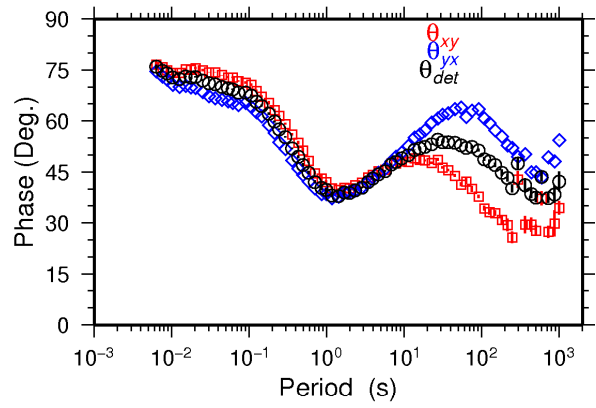
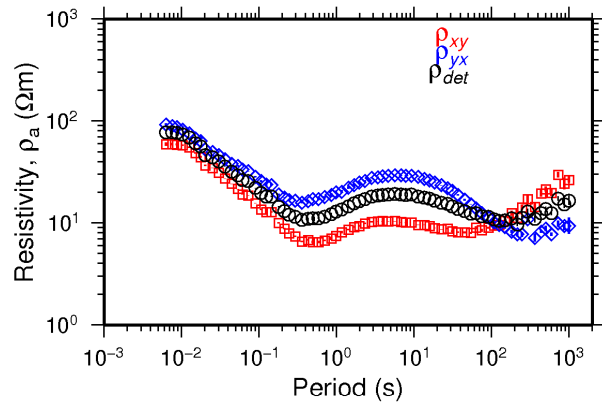
THR109

Skrá: THR109.EDI



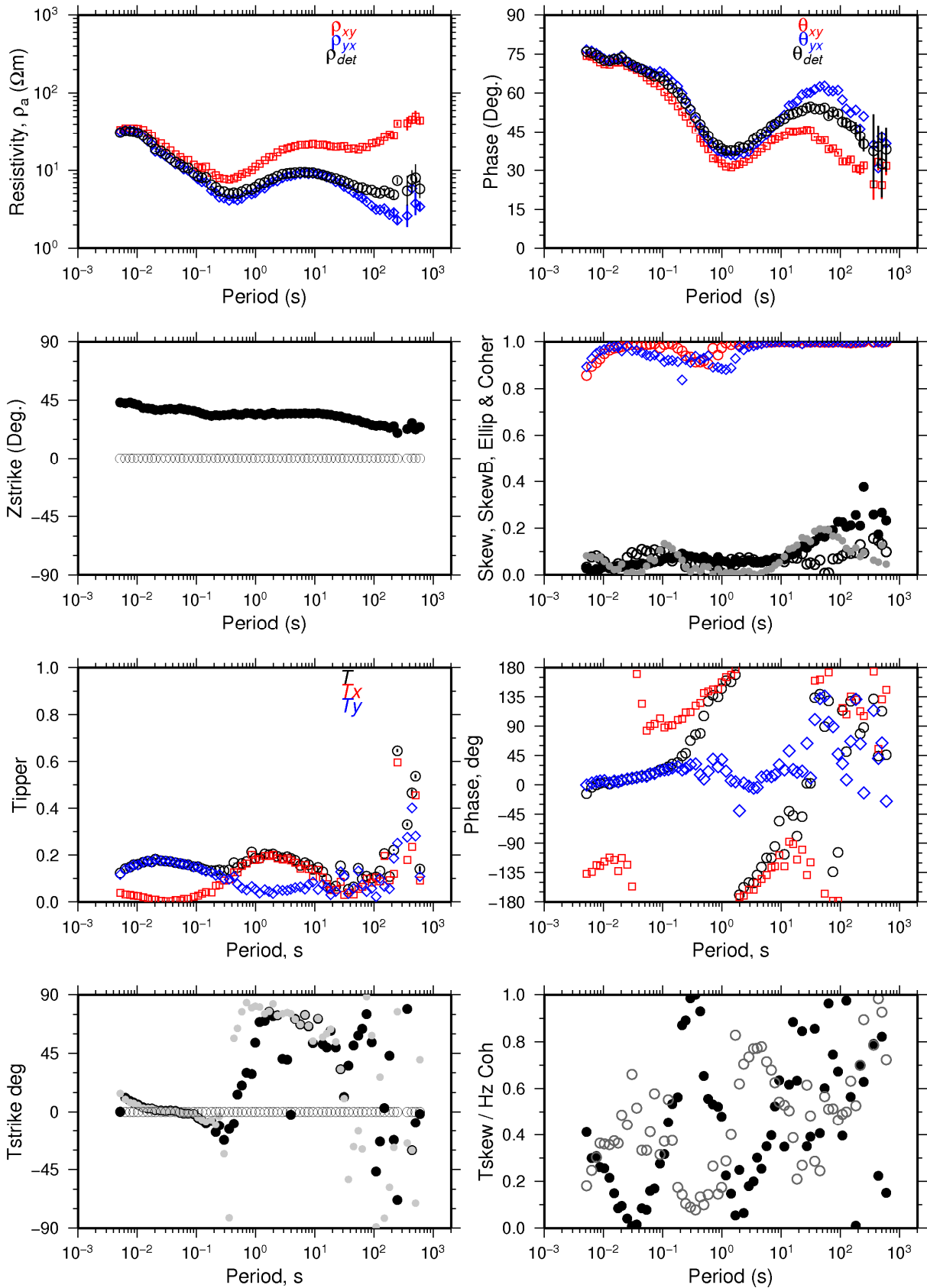
THR110

Skrá: THR110.EDI



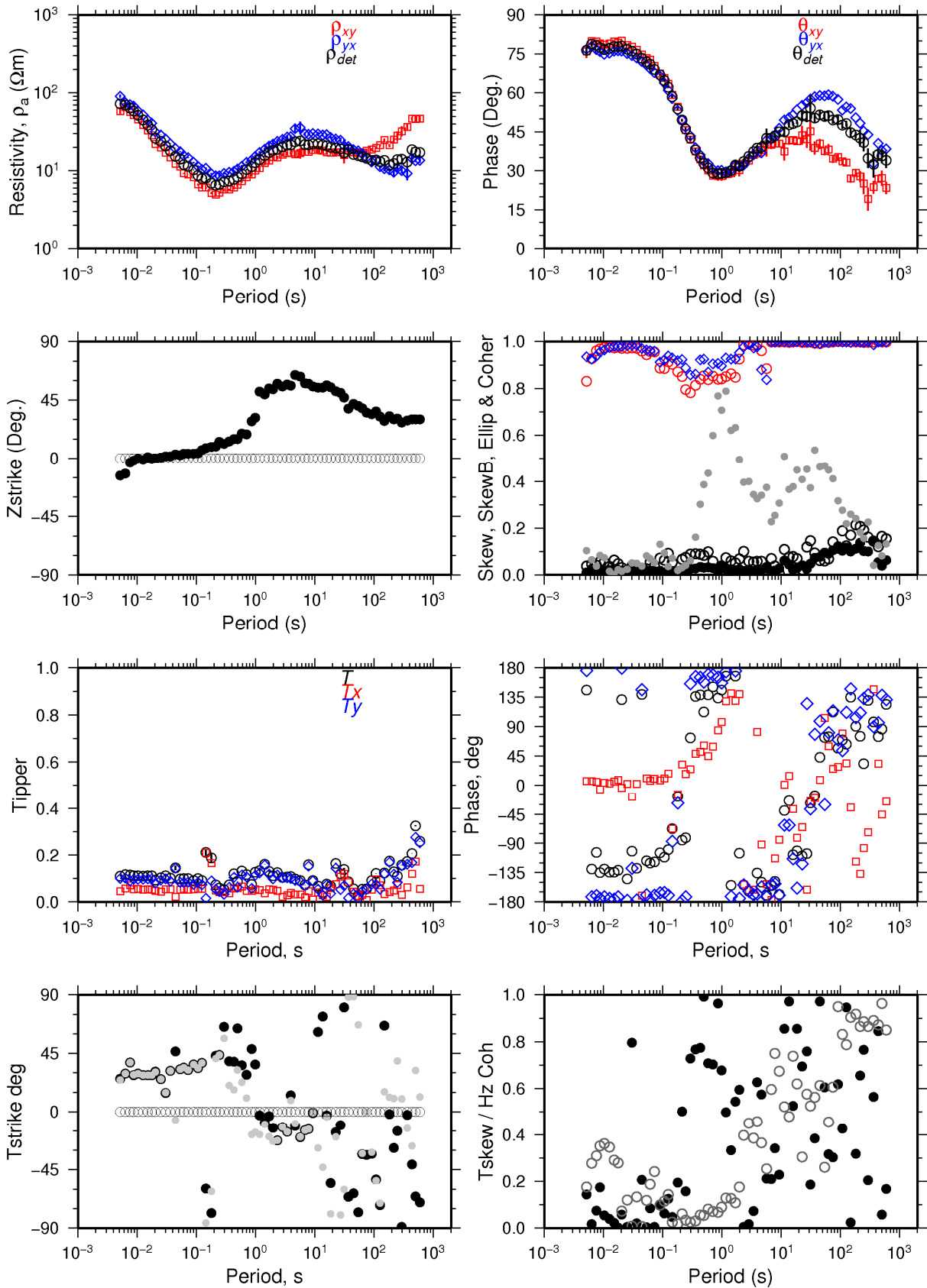
THR111

Skrá: THR111.EDI



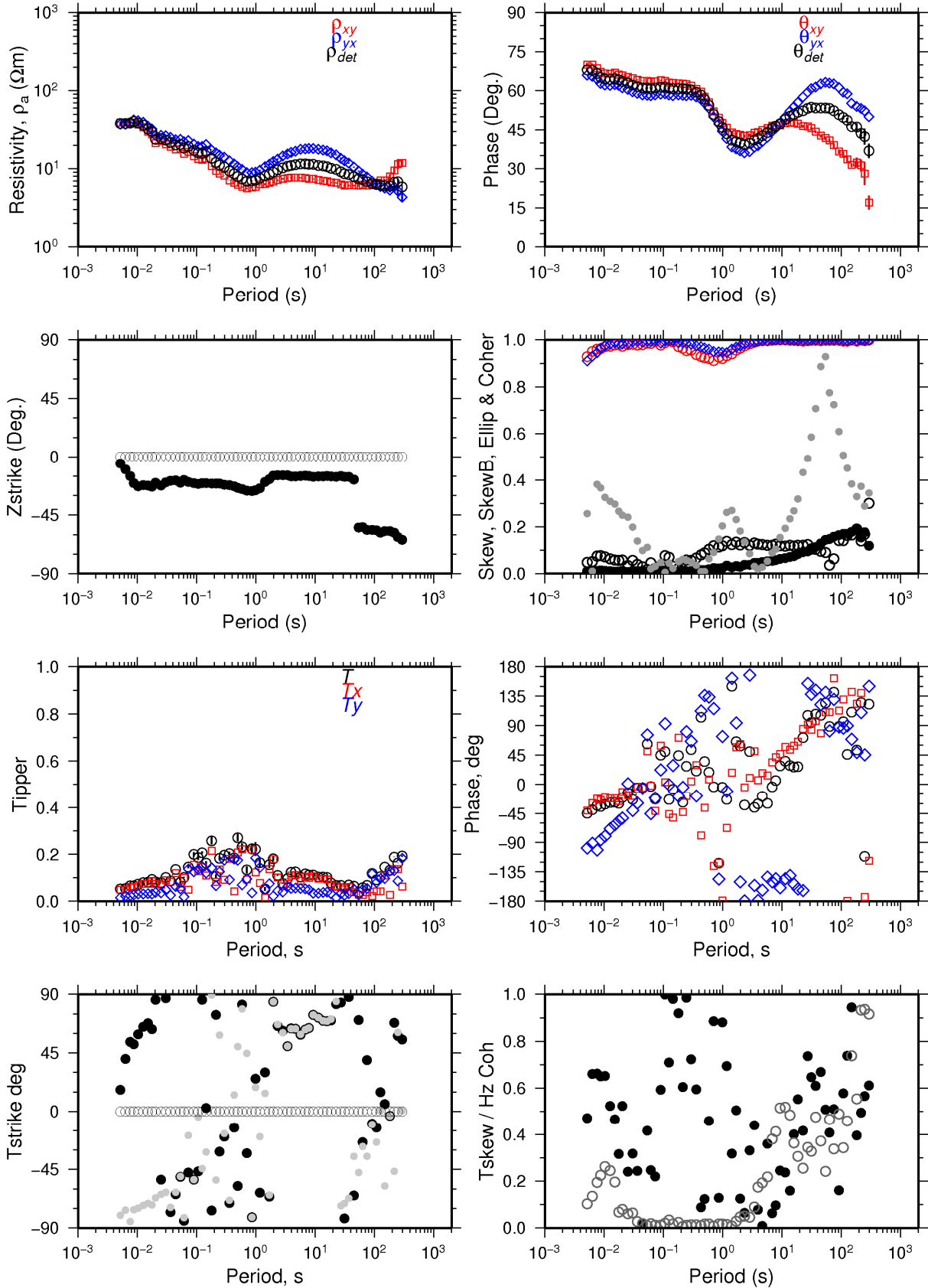
THR123

Skrá: THR123.EDI



THR124

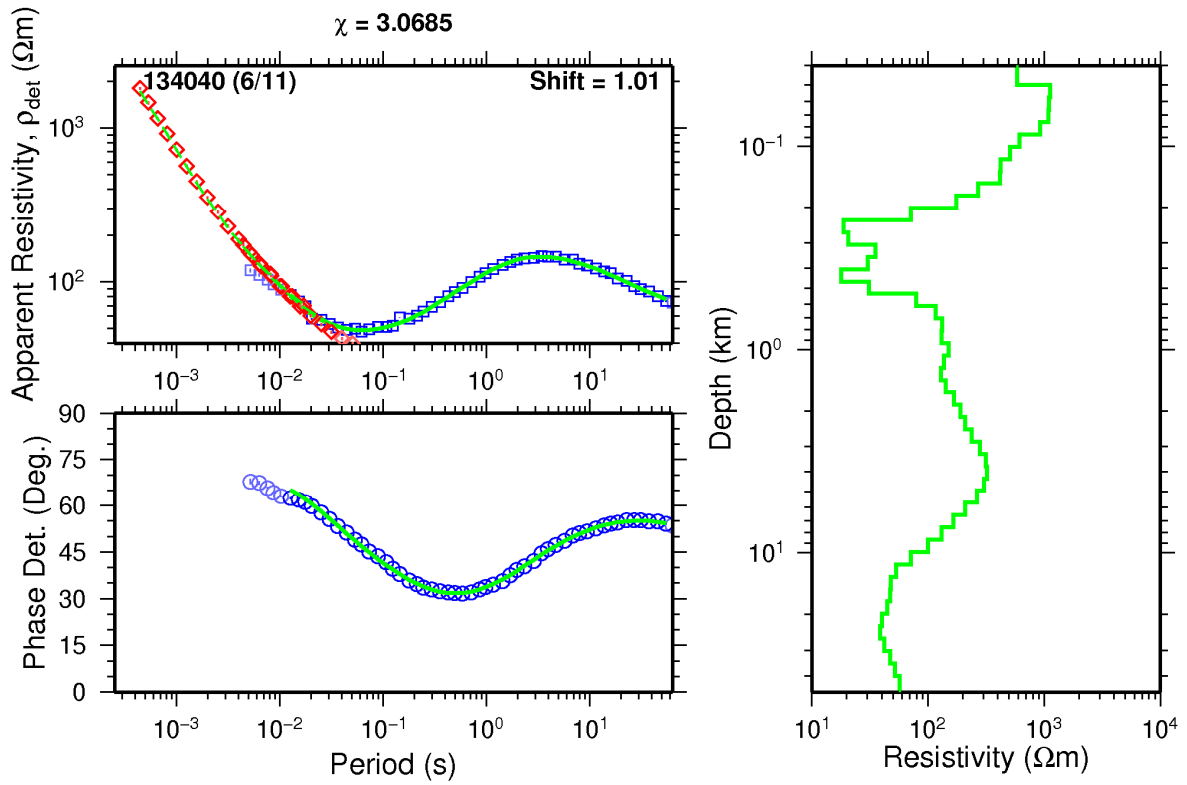
Skrá: THR124.EDI



APPENDIX III: 1D models of the joint inversion for all the TEM and MT data

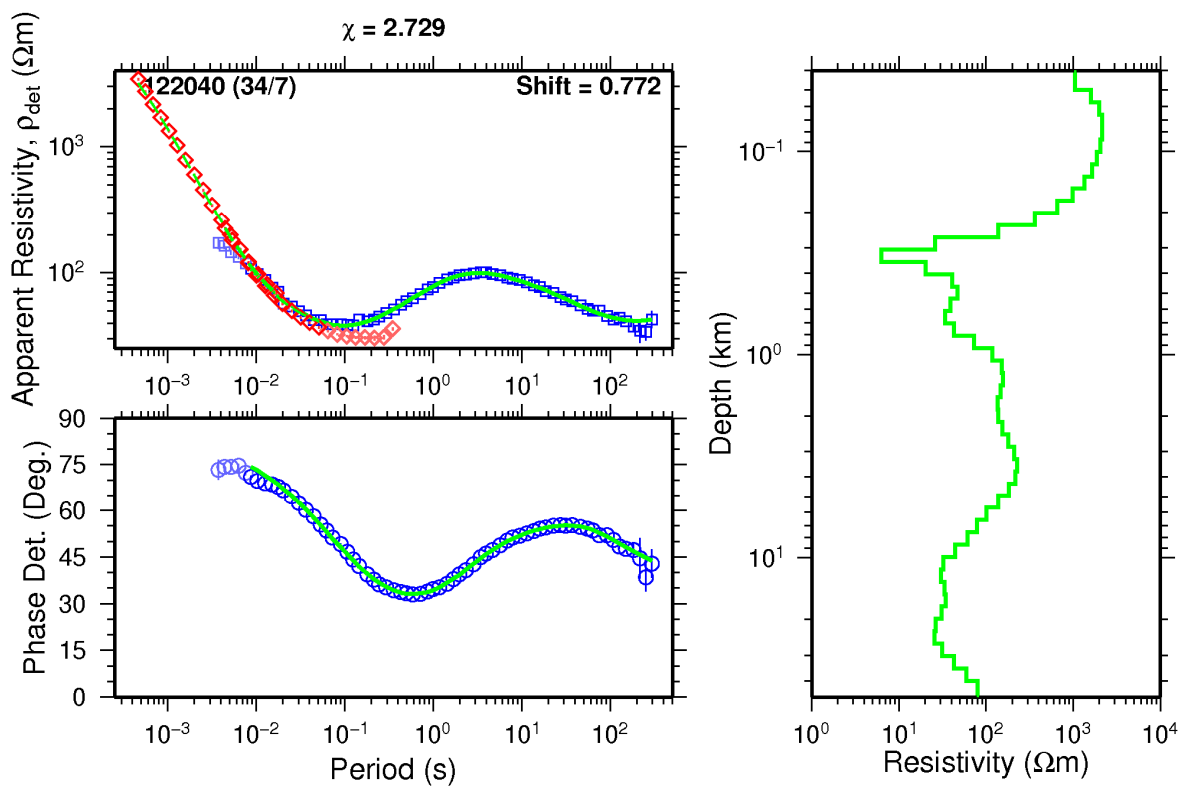
THR005

$\chi = 3.0685$



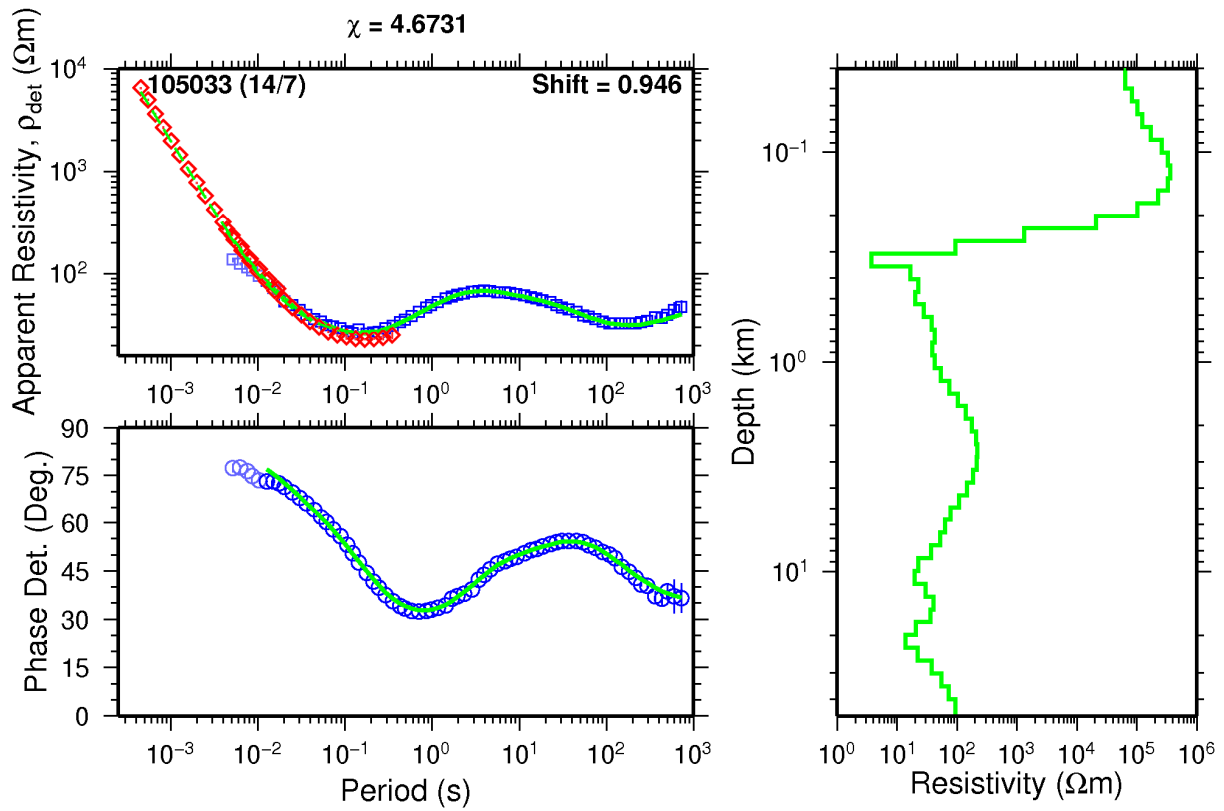
THR006

$\chi = 2.729$



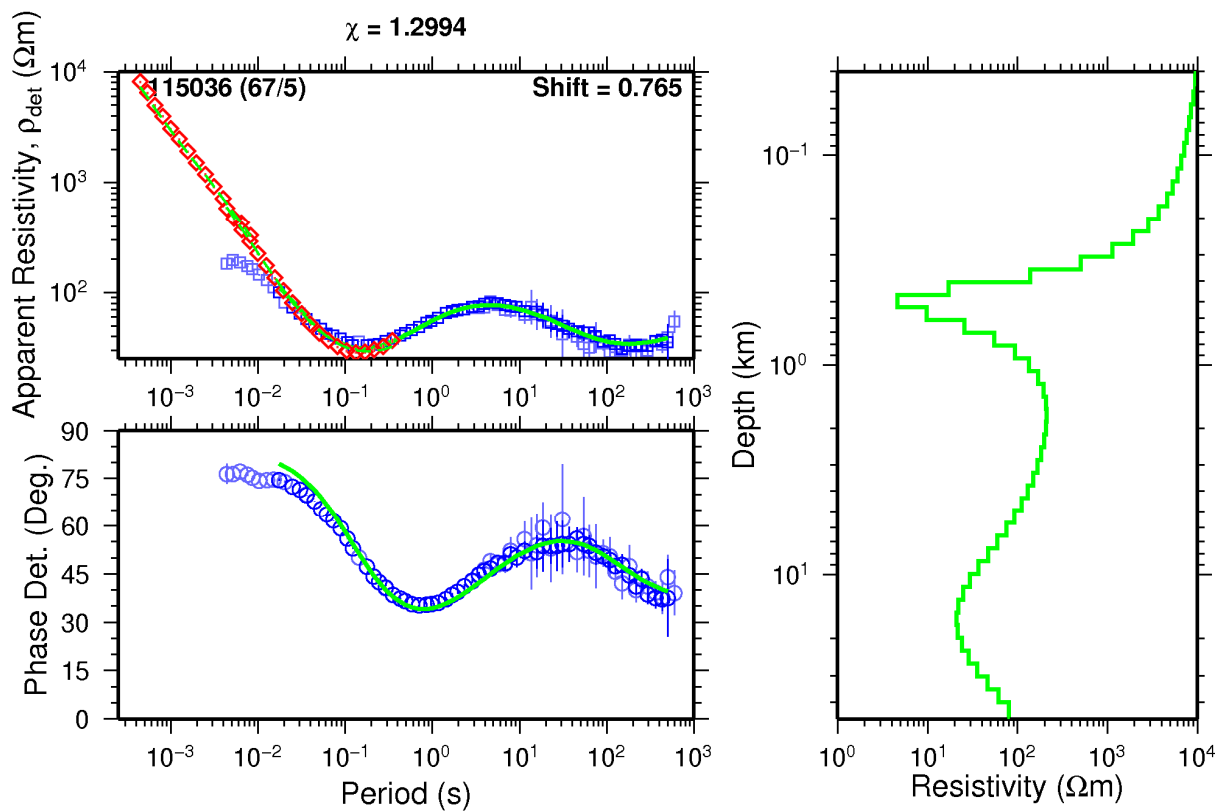
THR019

$\chi = 4.6731$

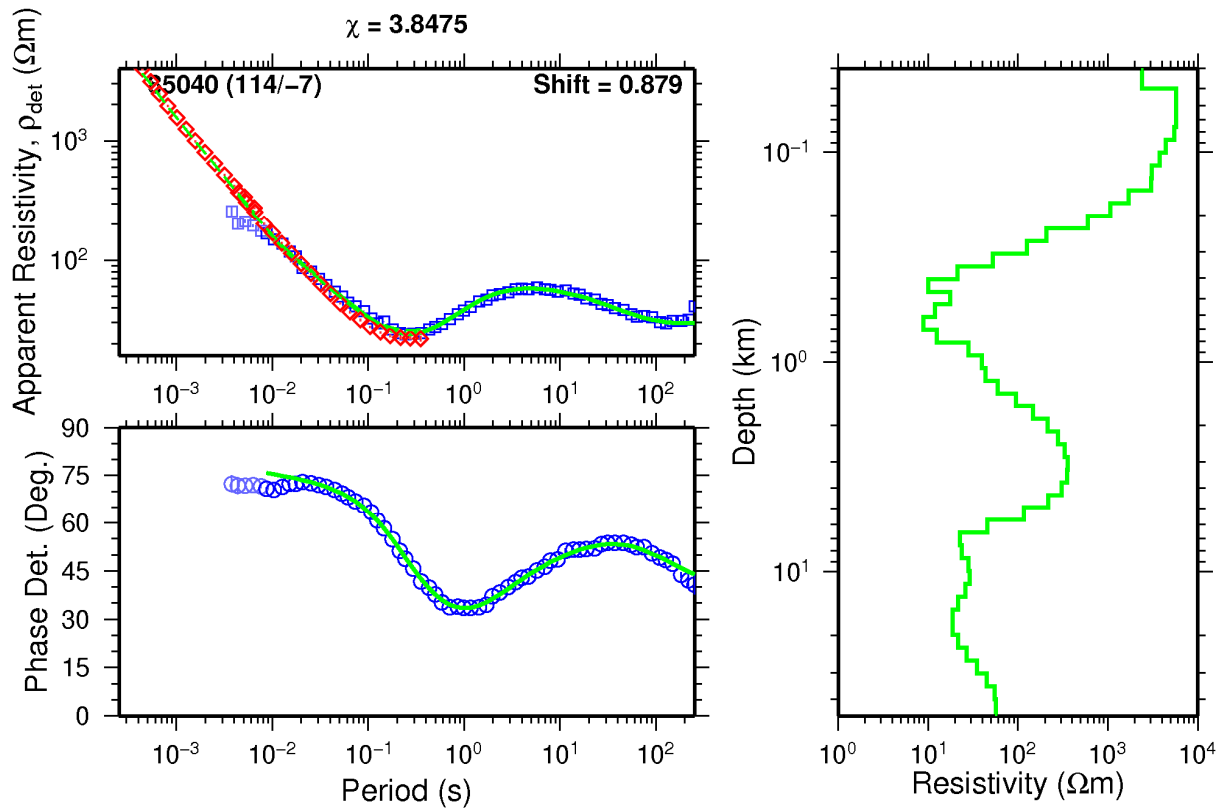


THR048

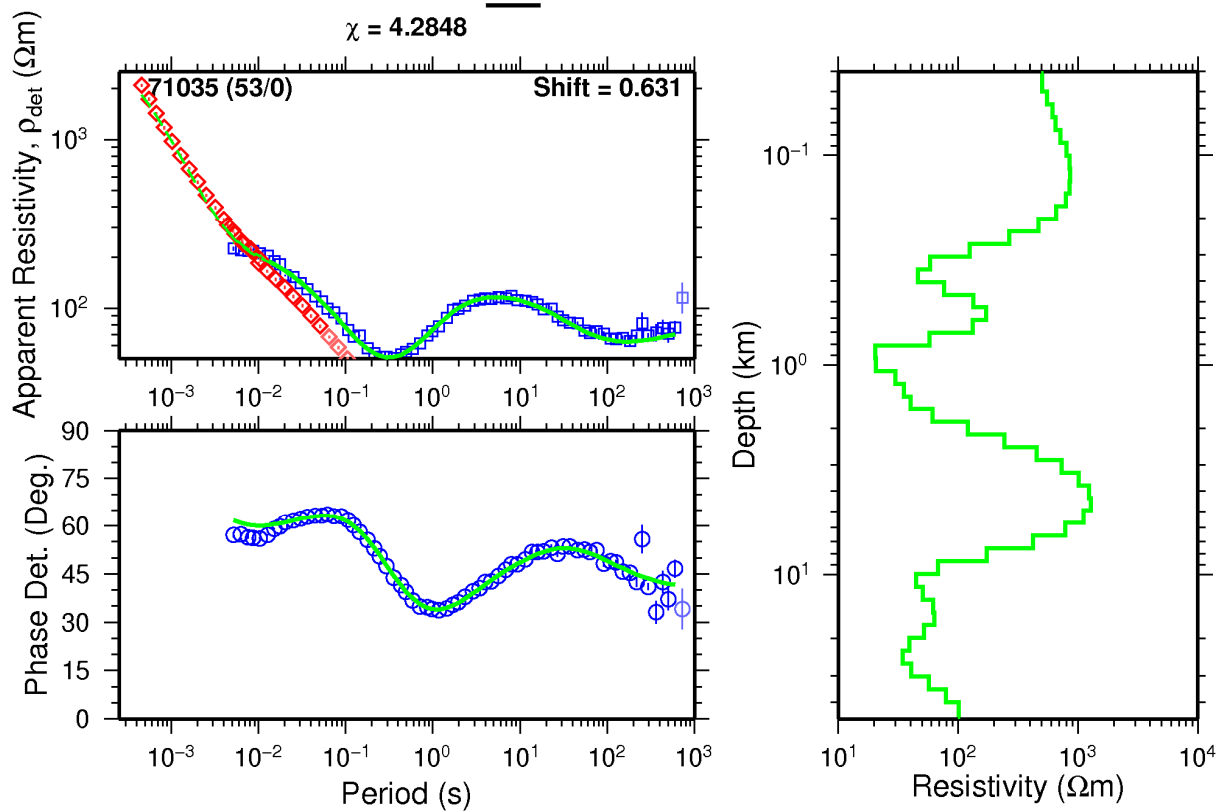
$\chi = 1.2994$



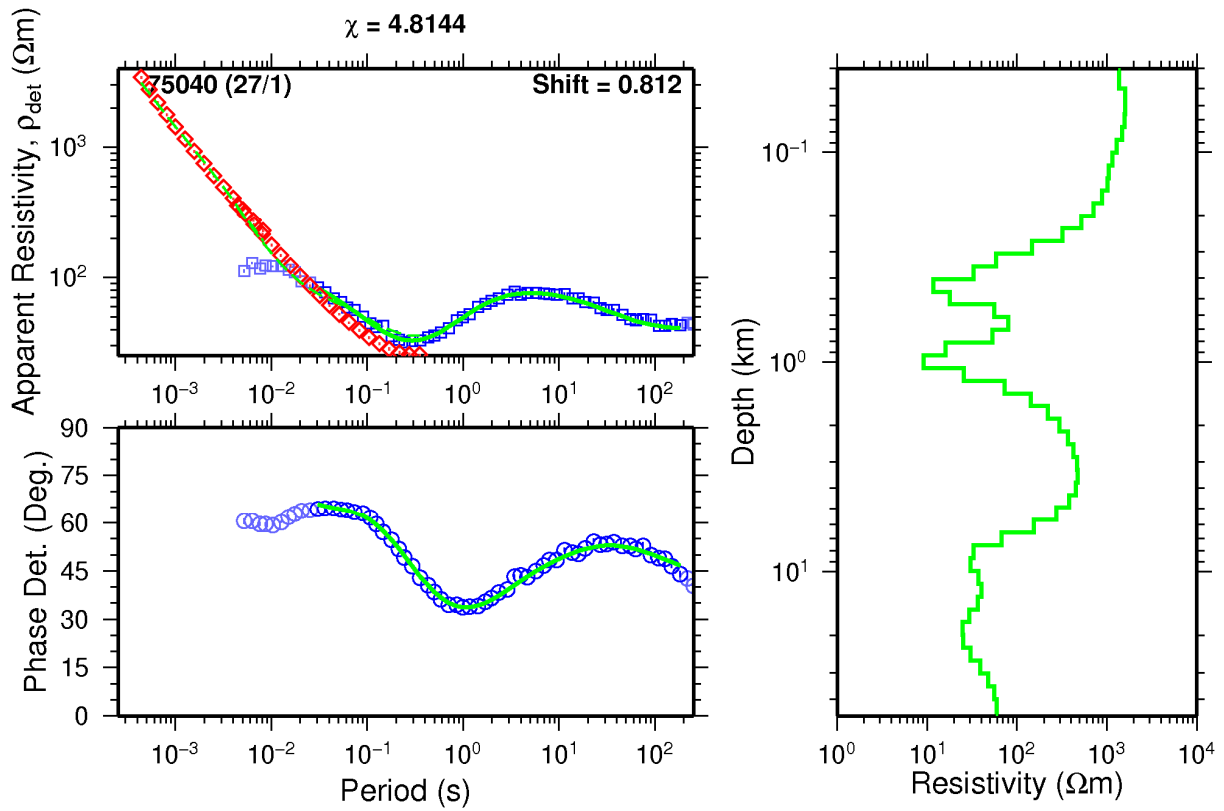
THR055



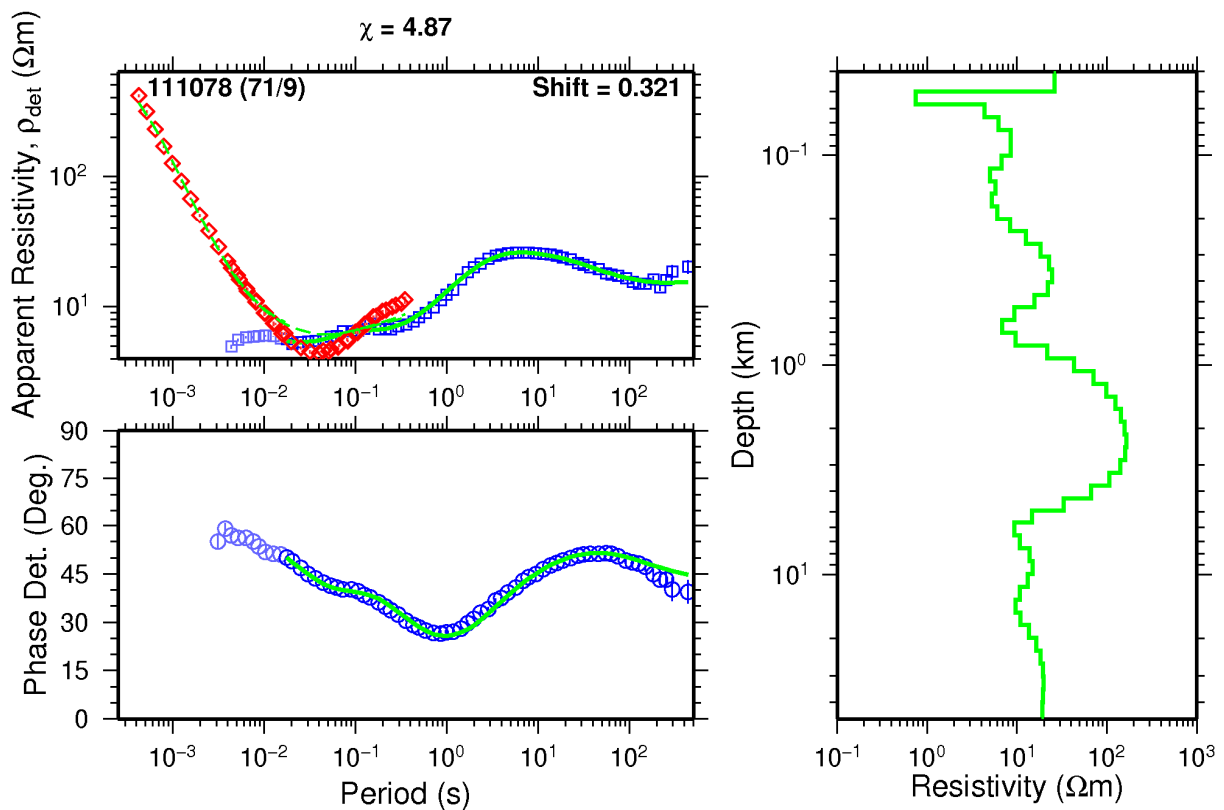
THR056_out



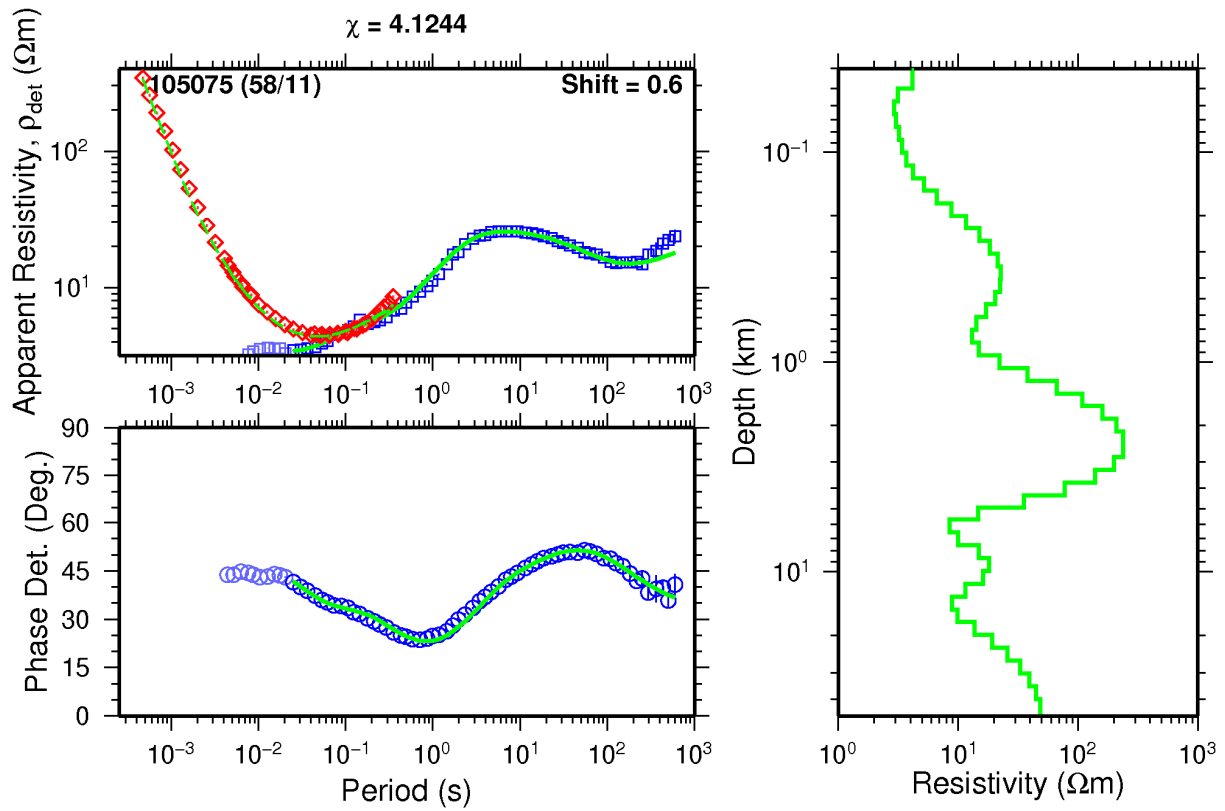
THR057



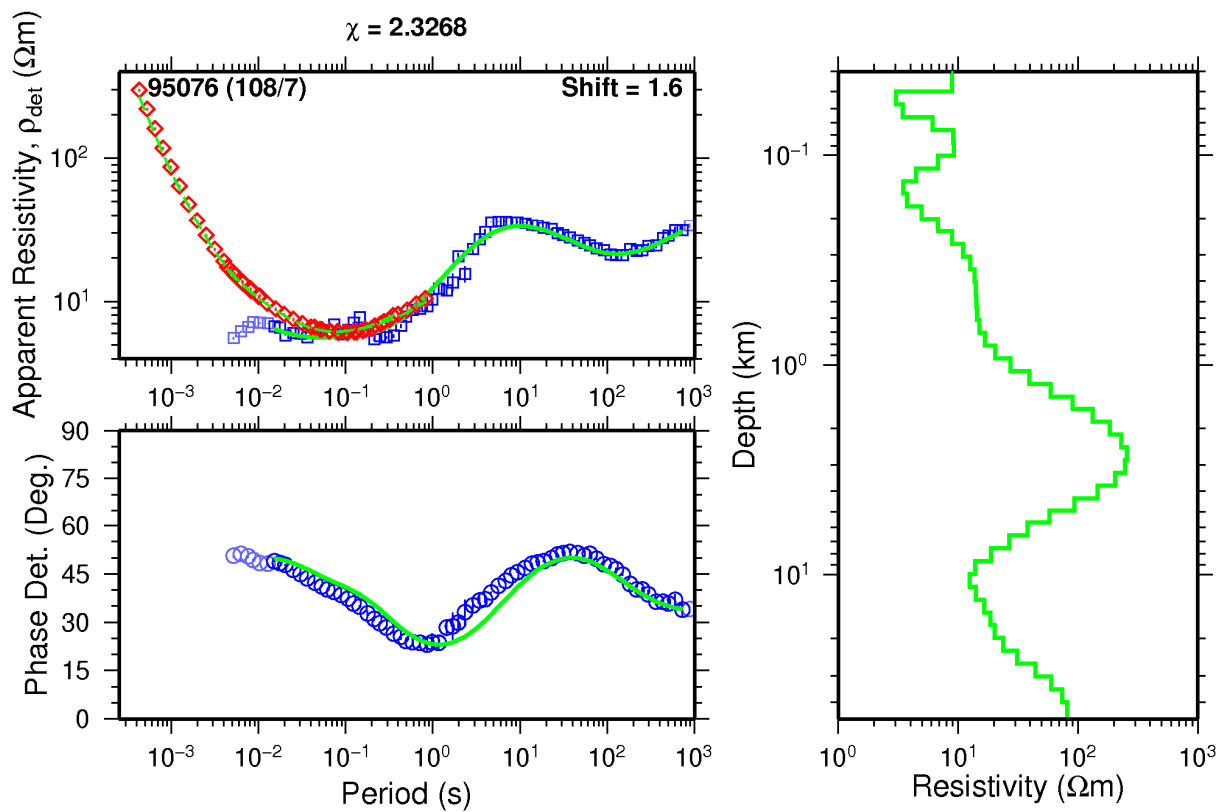
THR101



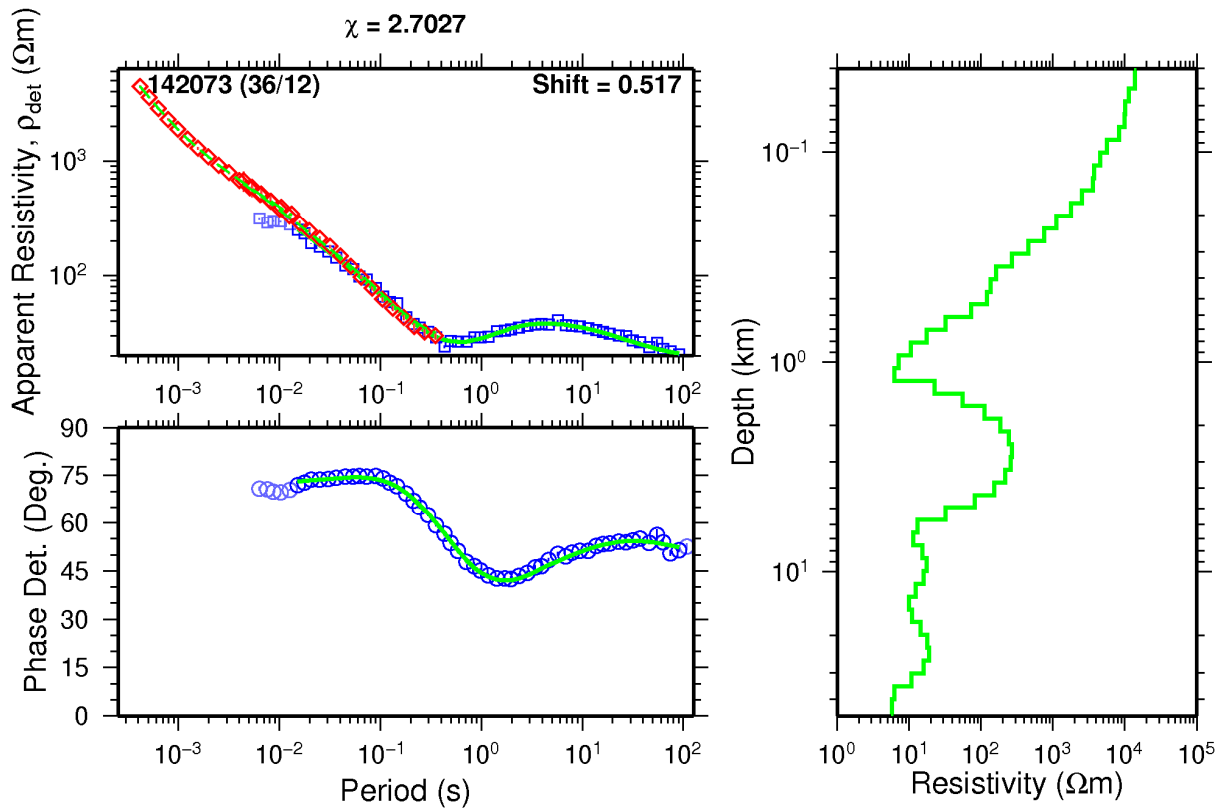
THR102



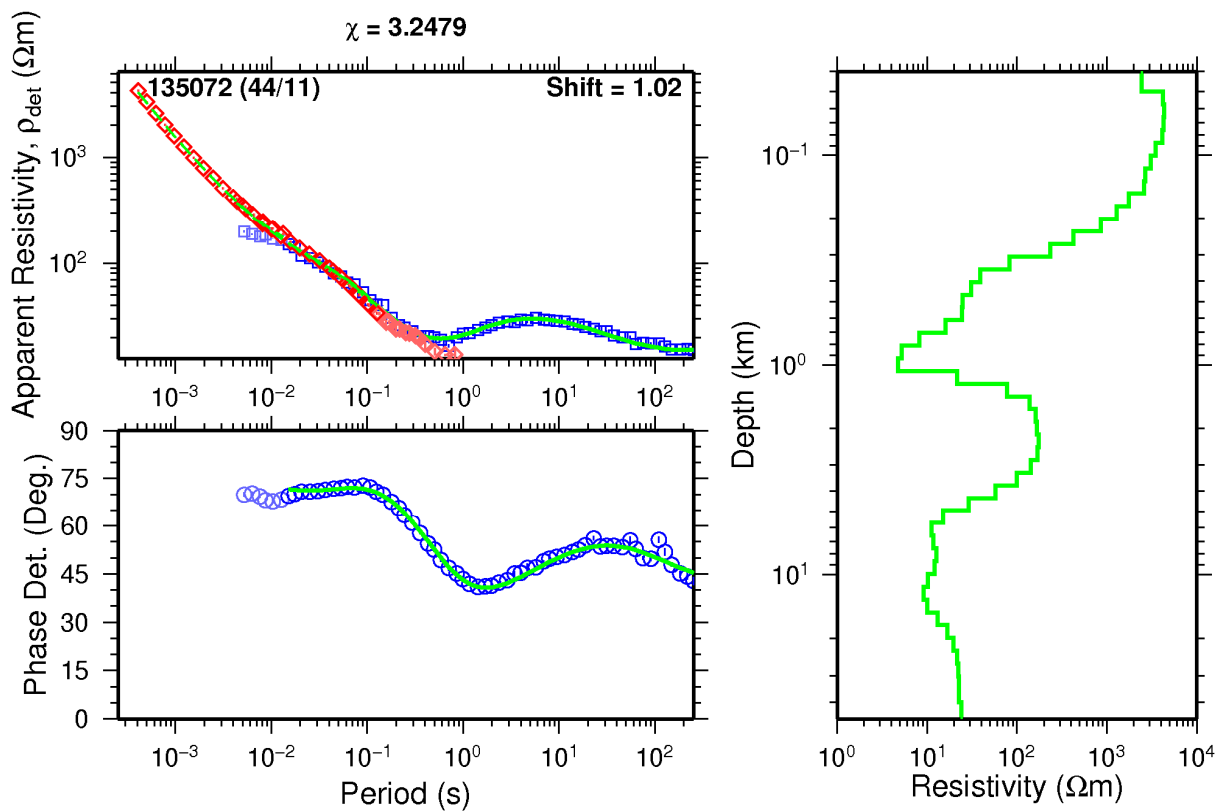
THR107



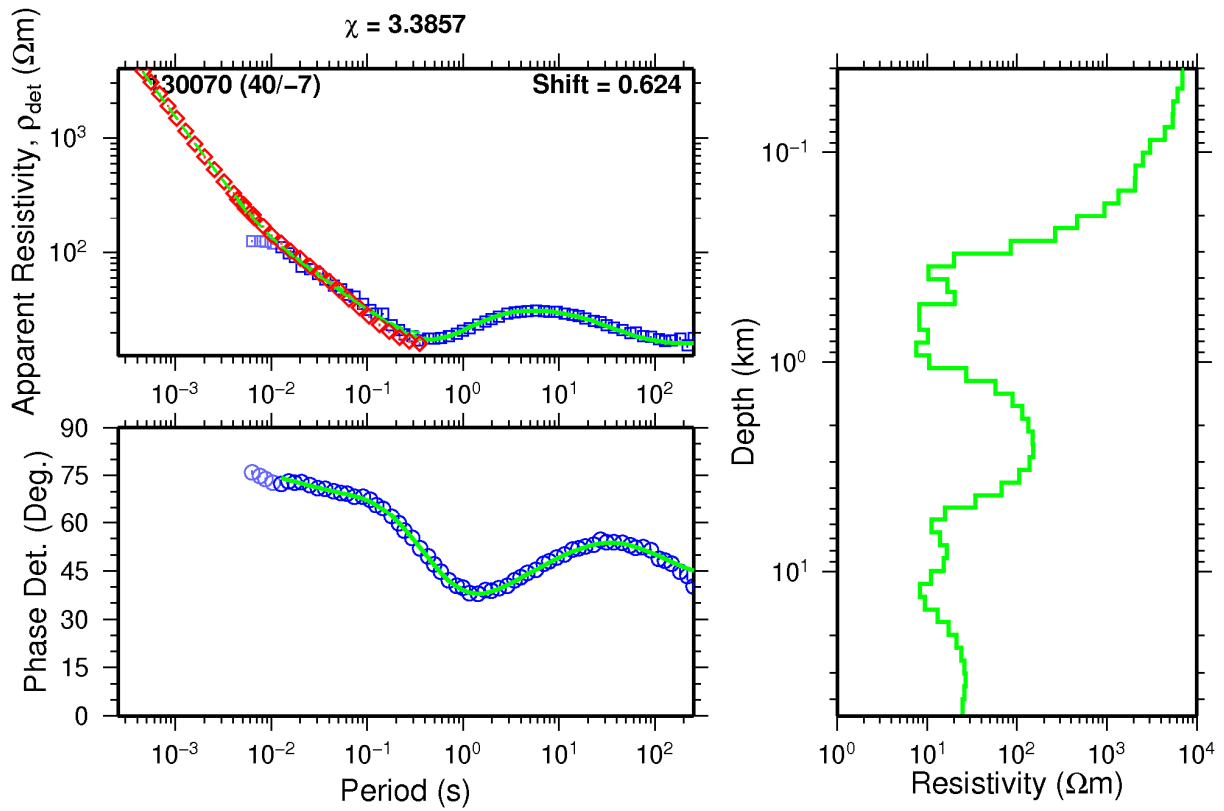
THR108



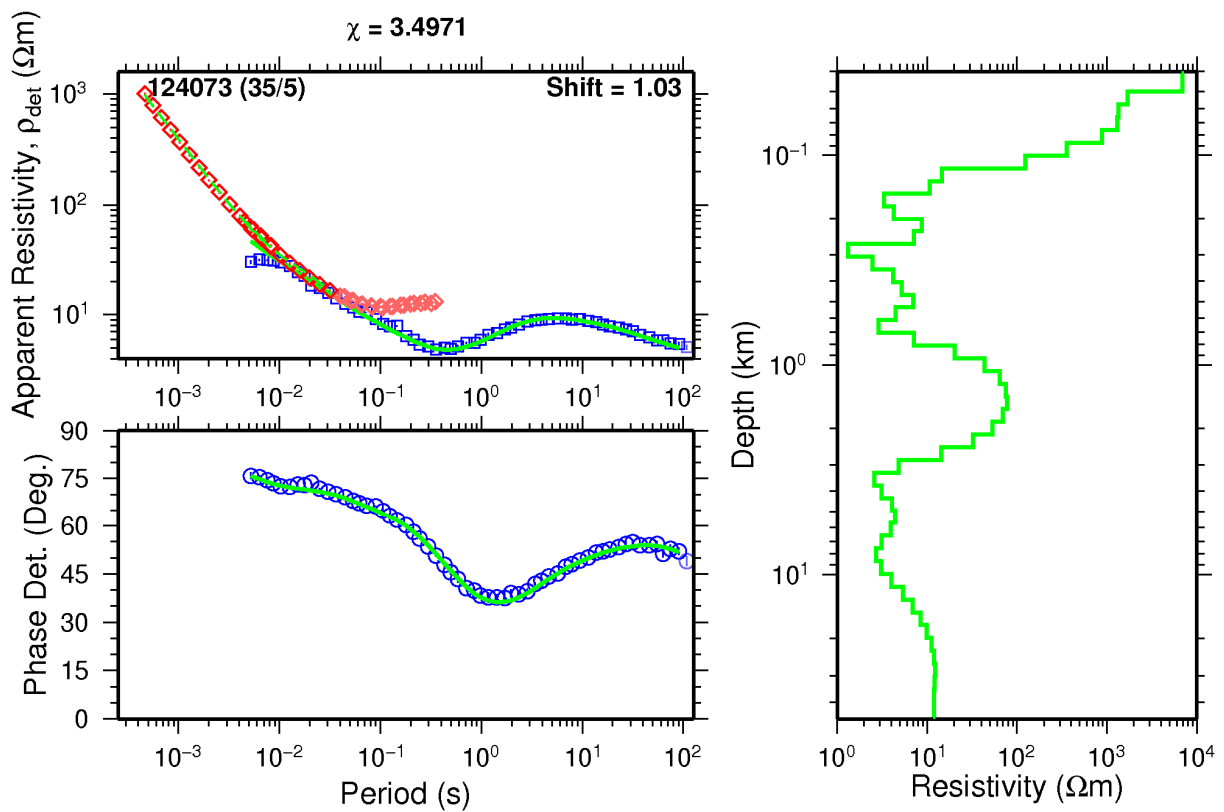
THR109



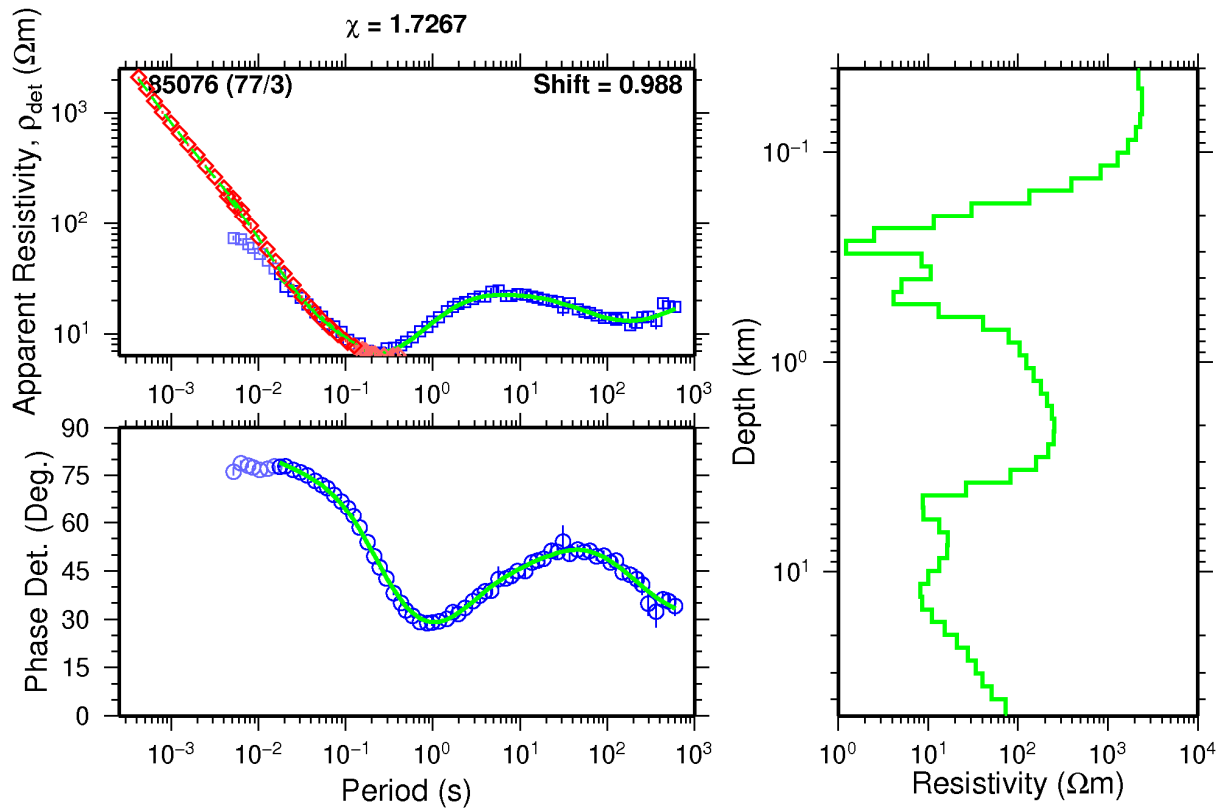
THR110



THR111



THR123



THR124

