

RAFORKUMÁLASTJÓRI

ÁÆTLUNAR- OG MÆLINGAD.

í billu

13

MÁLAFÖLNI

442.4

(Rauðvöl)

RAFVEITA AUSTURLANDS

TEIKNINGAR

SIGURÐAR S. THORODDSEN VERKFRÆÐINGS

MEÐ ÁÆTLUNUM UM VIRKJUN

GRÍMSÁR

FJARÐARÁR

LAGARFOSS

APRÍL 1954

Teikningar:

G. Marteinson og S.Thoroddsen verkfr.

- | | | |
|----|---|-------|
| 1. | Virkjun Fjarðarár
Stífla á Neðristaf | A-754 |
| 2. | Virkjun Fjarðarár
Stífla á Neðristaf | A-755 |
| 3. | Virkjun Fjarðarár
Prýstivatnspípa | A-756 |
| 4. | Virkjun Fjarðarár
Prýstivatnspípa | A-757 |
| 5. | Virkjun Fjarðarár
Prýstivatnspípa | A-758 |

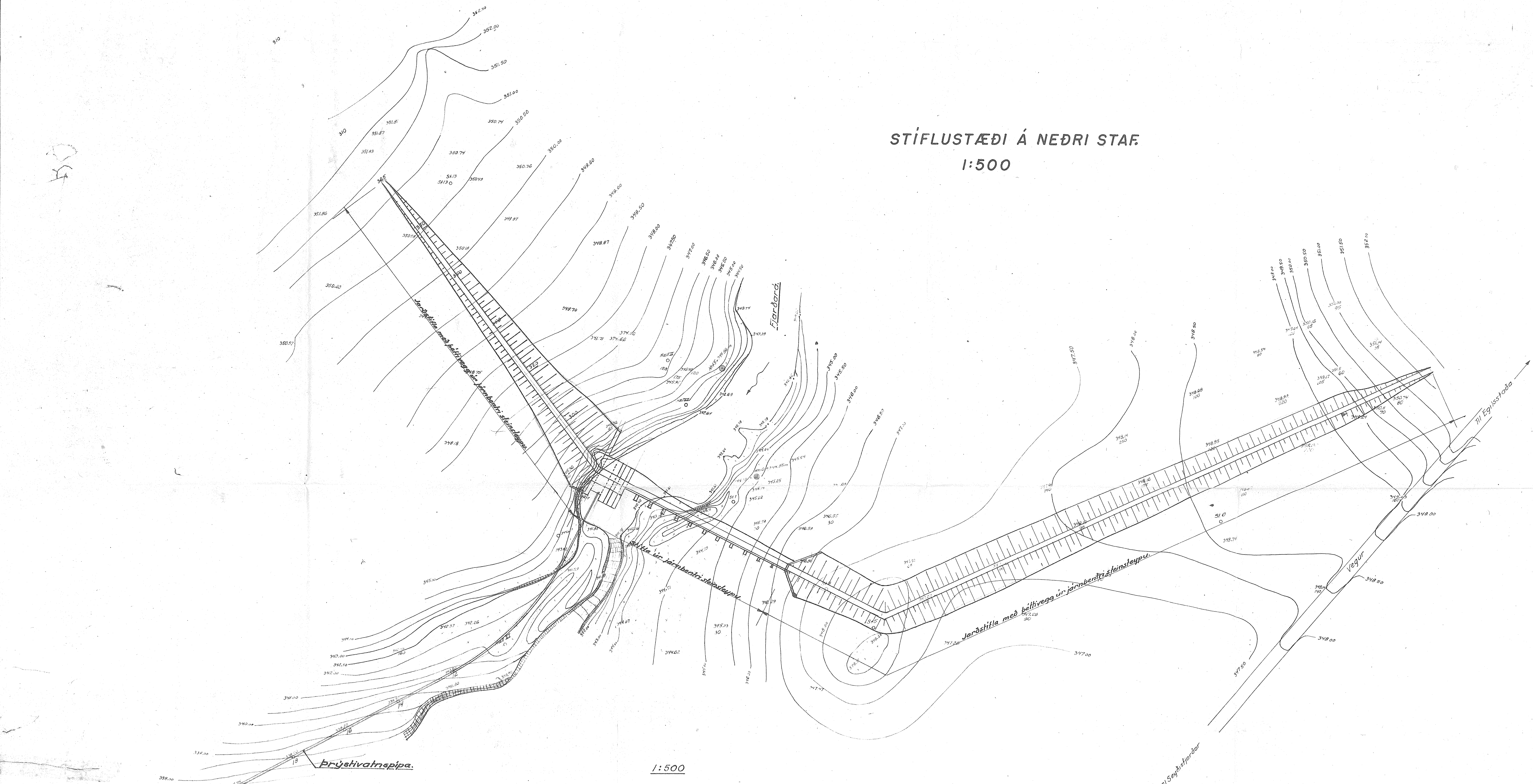
6.	(grantsarararar)x	xxx-914
----	--------------------------------	--------------------

Sigurður Thoroddsen verkfr. M.VI.

- | | | |
|-----|---|--------|
| 6. | Virkjun Grímsár | A-914 |
| 7. | Virkjun Grímsár
í Skriðdal | A-915 |
| 8. | Virkjun Grímsár
í Skriðdal | A-916 |
| 9. | Virkjun Grímsár í skriðdal | A-917 |
| 10. | Virkjun Lagarfoss | A-1023 |
| 11. | Virkjun Lagarfoss
Stöðvarhús 2.tilh. | A-1034 |
| 12. | Virkjun Lagarfoss
Stöðvarhús og göng 2.tilh. | A-1035 |
| 13. | Virkjun Fjarðarár
Stífla Heiðarvatns | A-1036 |
| 14. | Virkjun Fjarðarár
Stöðvarhús | A-1037 |
| 15. | Virkjun Grímsár
Stífla á fossbrún | A-1038 |
| 16. | Virkjun Grímsár
Inntak, Stöðvarhús og göng | A-1039 |
| 17. | Virkjun Grímsár
Göng og inntak | A-1040 |
| 18. | Virkjun Fjarðarár
Langsnið í pípuleið | A-1072 |

STÍFLUSTÆÐI Á NEÐRI STAF.

1:500



1:500



Mælinguna gerði Braqi Þorsteinsson verkfr. l. ág. 1951.

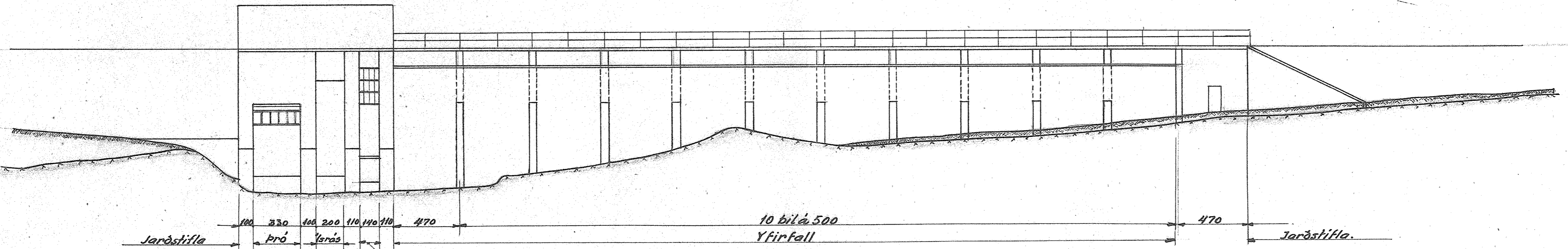
Hæðafölur í metrum og miðast við hæð á klöpp 1344,86 m merkt 112-5

Staðurinn er merktur með hring mæltum í kláppina.

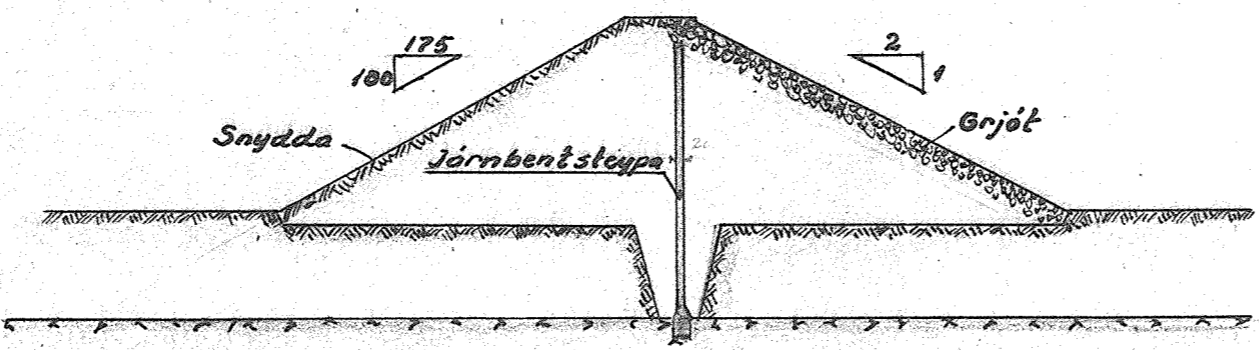
Míllí hæðalína eru 50 cm. Jarðvegs lína og klöpp alitrad í cm.

o Táknað tréhel Táknað klápp.

G. MARTEINSSON og S. THORODDSEN VIRKJUN		
VIRKJUN FJARDARNA	1. BLAÐ	
1:500	R754	
STÍFLA Á NEÐRI STAF.	36.	51.



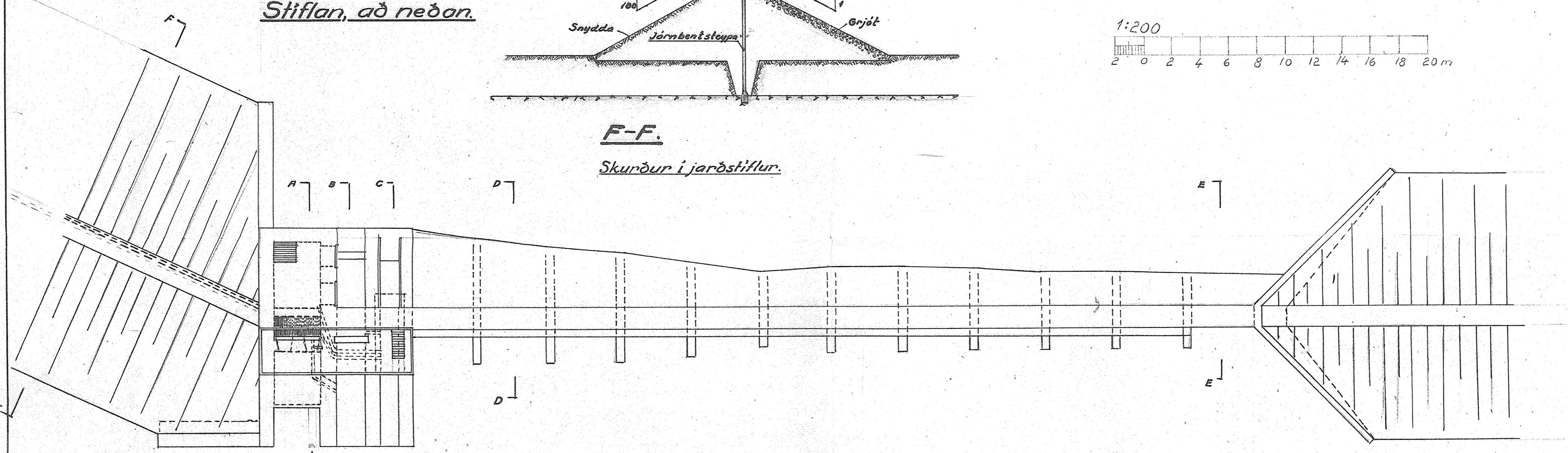
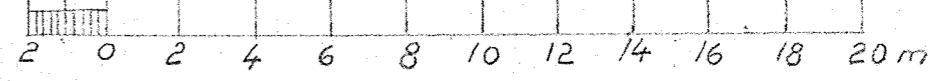
Stíflan, að neðan.



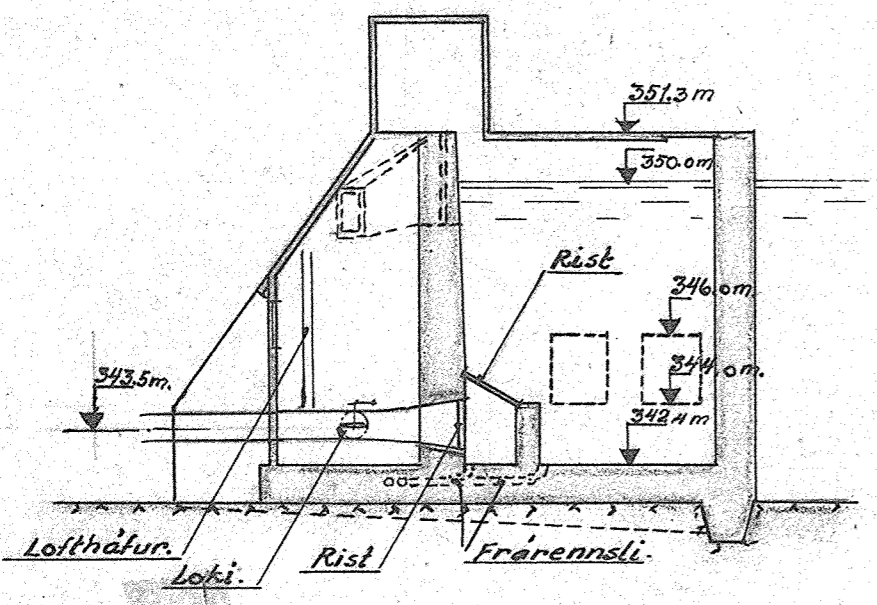
F-F.

Skurður í jarðstíflur.

1:200

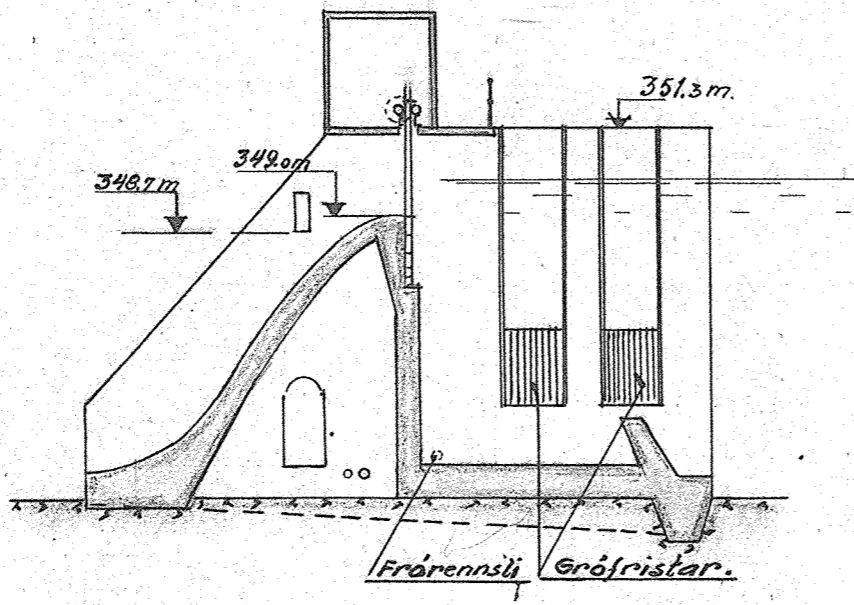


Grunnmynd.



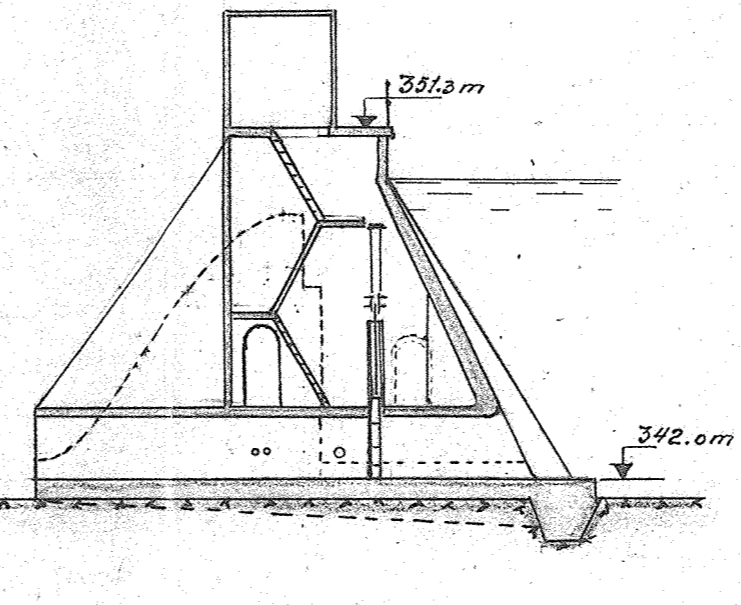
A-A.

Skurður í pró.



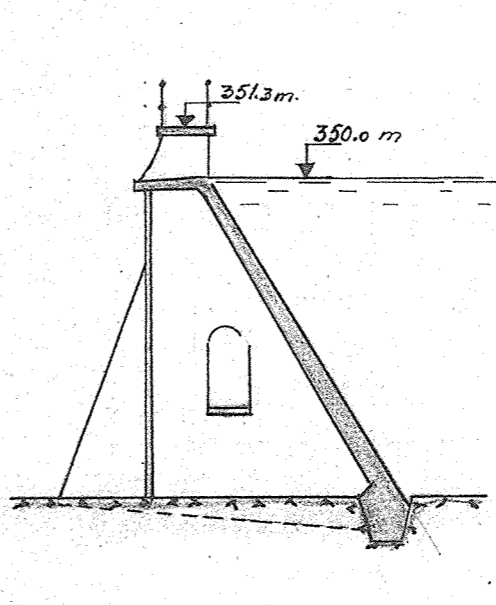
B-B.

Skurður í isrás.



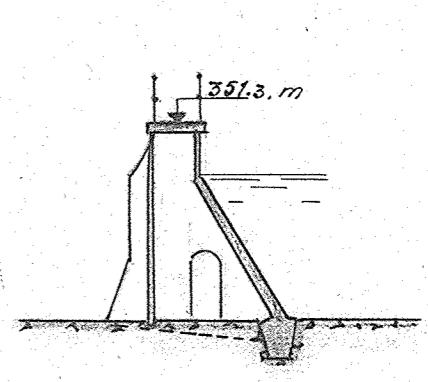
C-C.

Skurður í botnrás.



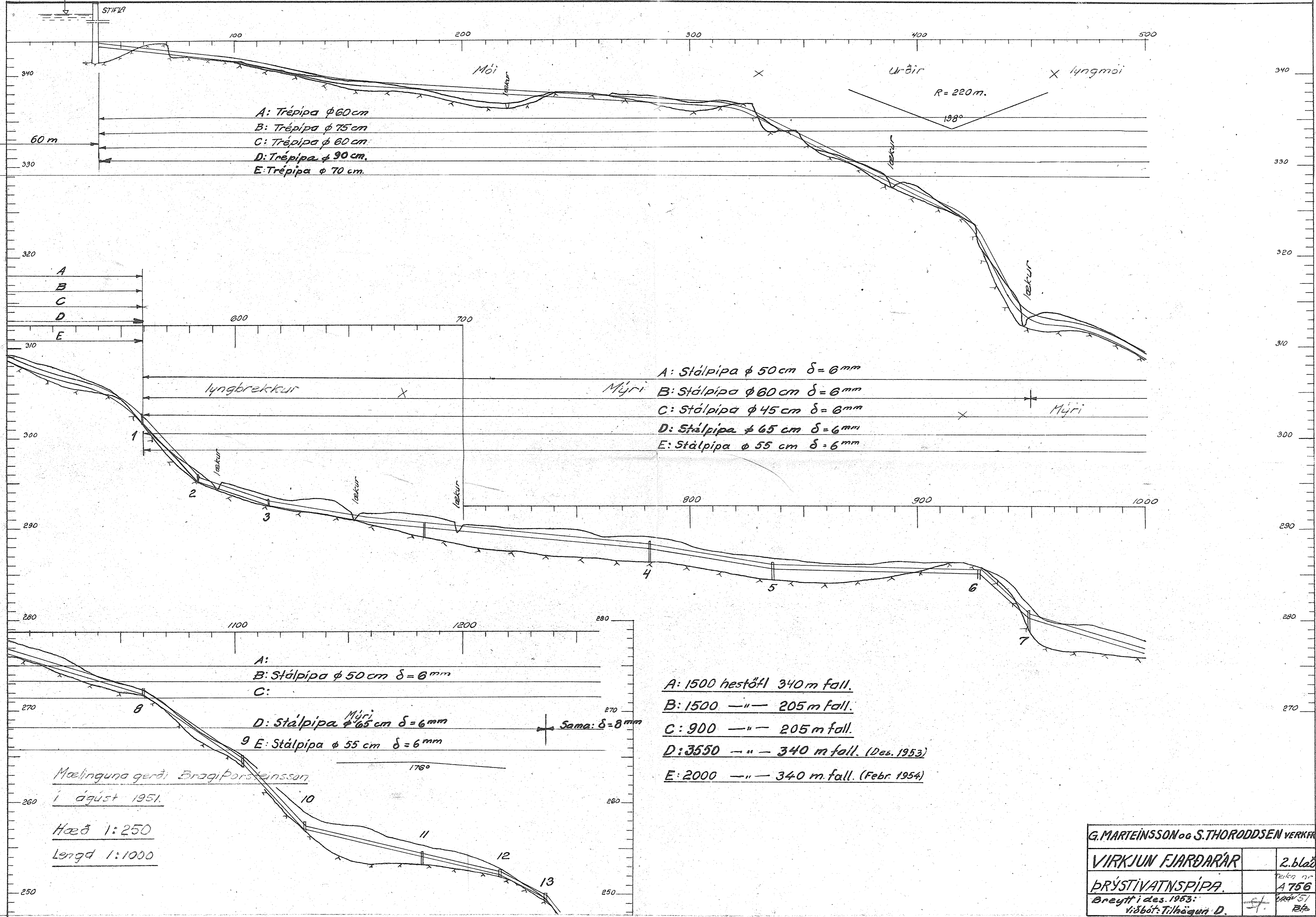
D-D.

Skurður í yfirfall.



E-E.

G. MARTEINSSON OG S. THORODDSEN VERKFR.		
VIRKJUN FJARDARAR 2. BLAD		M: 1:200
STÍFLA A NEDRISTAF.		A755.
		11. nóv. 1917



A: Tréþípa ϕ 60 cm
 B: Tréþípa ϕ 75 cm
 C: Tréþípa ϕ 60 cm
 D: Tréþípa ϕ 90 cm
 E: Tréþípa ϕ 70 cm.

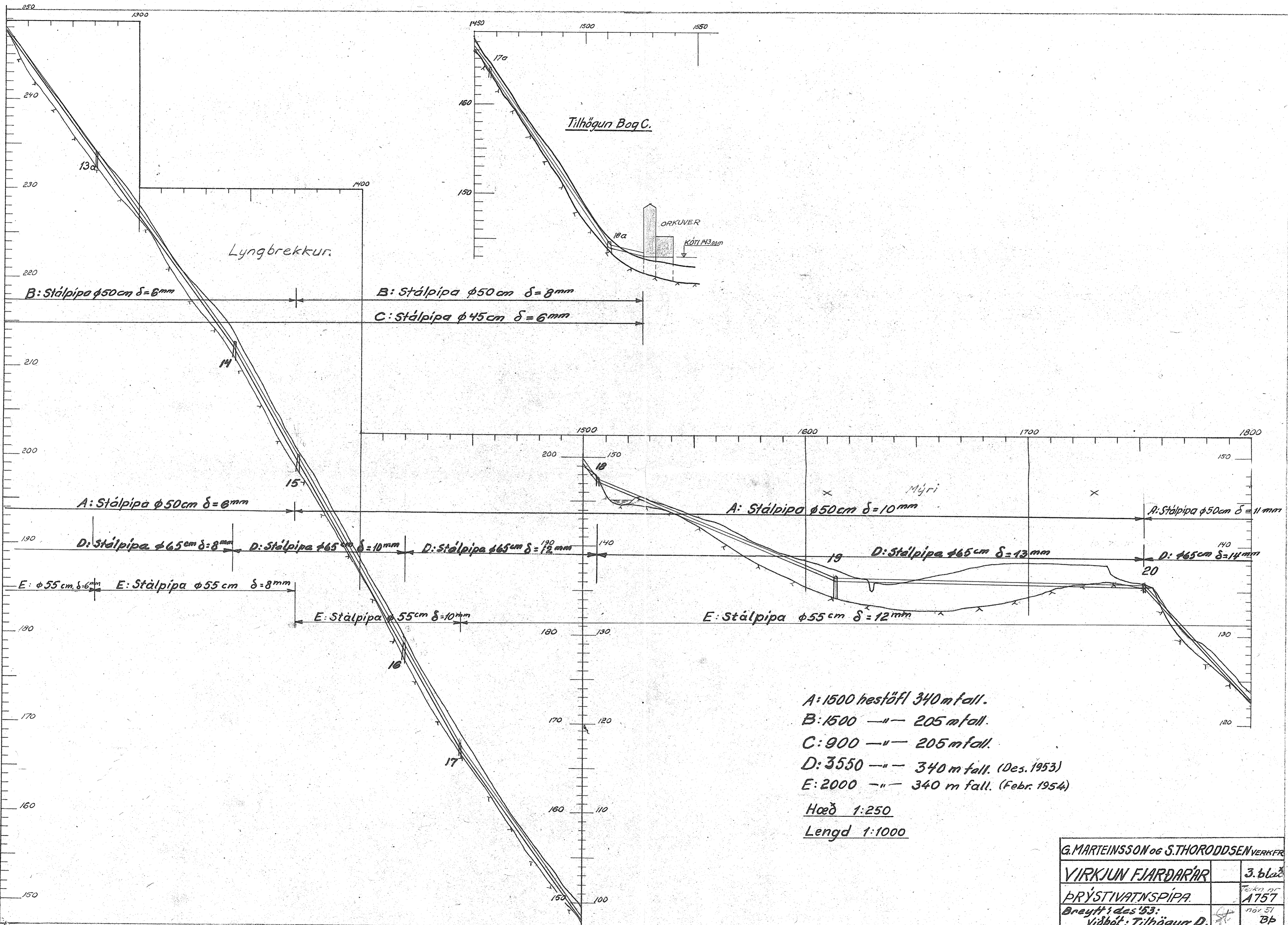
A: Stálþípa ϕ 50 cm $\delta = 6$ mm
 B: Stálþípa ϕ 60 cm $\delta = 6$ mm
 C: Stálþípa ϕ 45 cm $\delta = 6$ mm
 D: Stálþípa ϕ 65 cm $\delta = 6$ mm
 E: Stálþípa ϕ 55 cm $\delta = 6$ mm

A:
 B: Stálþípa ϕ 50 cm $\delta = 6$ mm
 C:
 D: Stálþípa ϕ 65 cm $\delta = 6$ mm
 E: Stálþípa ϕ 55 cm $\delta = 6$ mm

A: 1500 hestöfl 340 m fall.
 B: 1500 —" — 205 m fall.
 C: 900 —" — 205 m fall.
 D: 3550 —" — 340 m fall. (Des. 1953)
 E: 2000 —" — 340 m fall. (Febr. 1954)

Mælinguna gerði Bragiporsteinsson
 í ágúst 1951.
 Hæð 1:250
 Lengd 1:1000

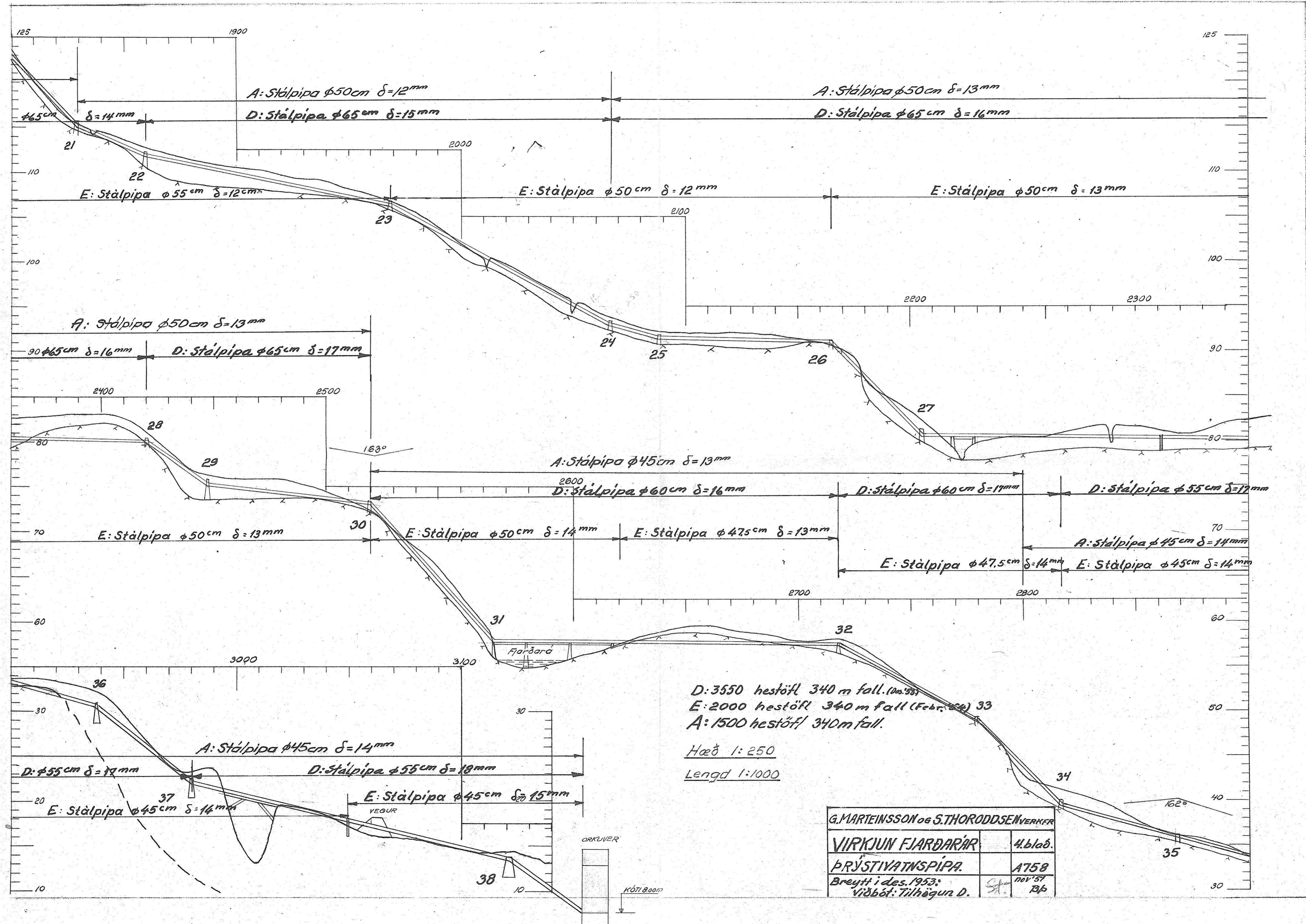
G. MARTEINSSON og S. THORODDSEN VERKFR.	
VIRKJUN FJARDARÁR	2. blað
BRÝSTIVATNSPIPA.	Teikn nr. A 756
Breytt í des. 1953. viðbót: Tilhögun D.	Bl. 51 Bl.



A: 1500 hestöfl 340 m fall.
 B: 1500 —"— 205 m fall.
 C: 900 —"— 205 m fall.
 D: 3550 —"— 340 m fall. (Des. 1953)
 E: 2000 —"— 340 m fall. (Febr. 1954)

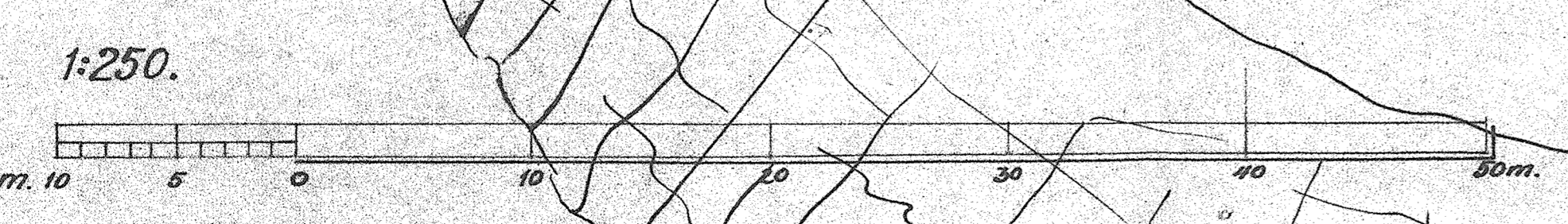
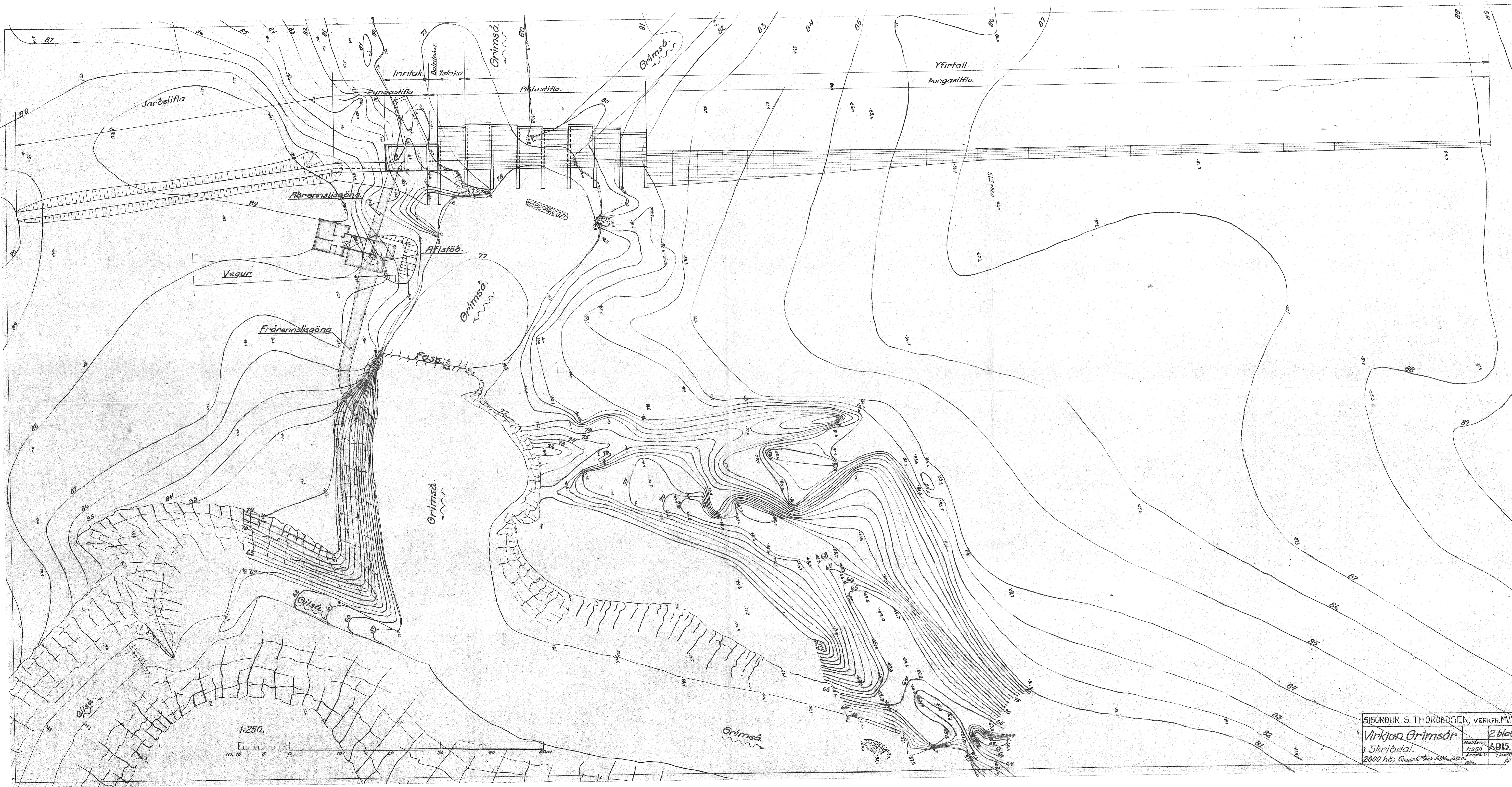
Hæð 1:250
 Lengd 1:1000

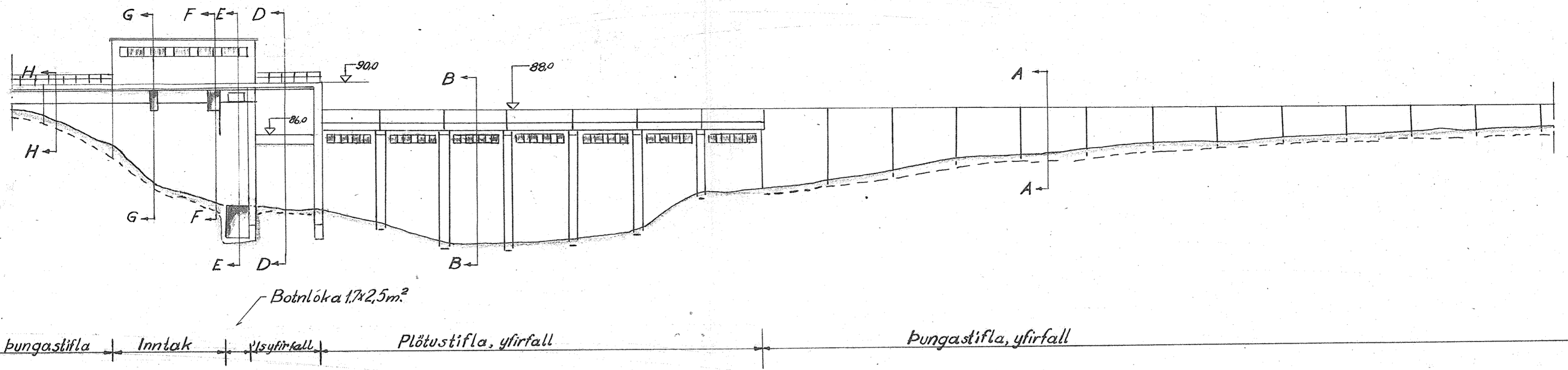
G. MARTEINSSON og S. THORODDSEN VERKFR.		
VIRKJUN FJARDARÁR		3. blað
ÞRÝSTIVATNSPIPA.		Teikn nr. A757
Breytt í des '53:		nóv '51
Víðbót: Tilhögun D.		BP



Teikn . A-914

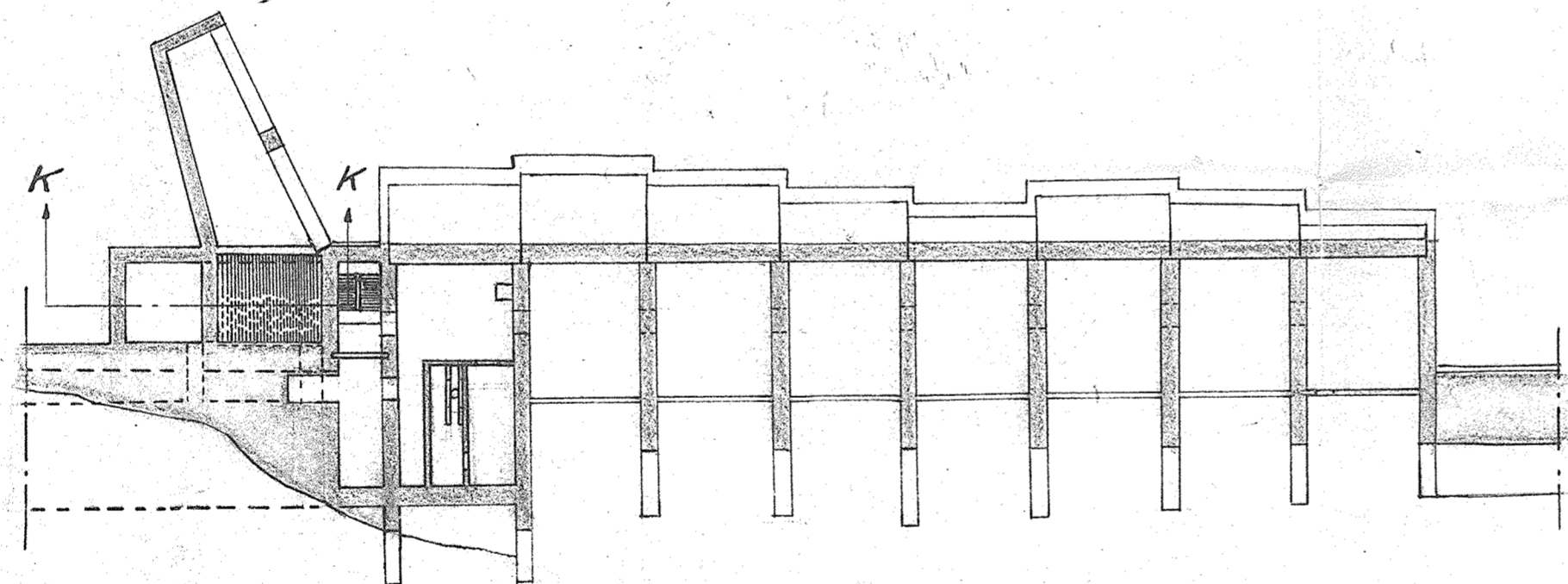
Vantar



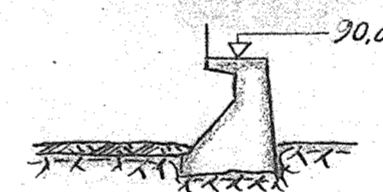


Jarðstífla | Þungastífla | Inntak | Yfirfall | Plötustífla, yfirfall | Þungastífla, yfirfall

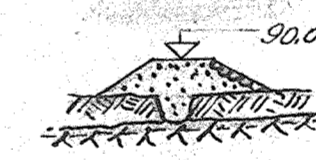
Framhlið stíflu.



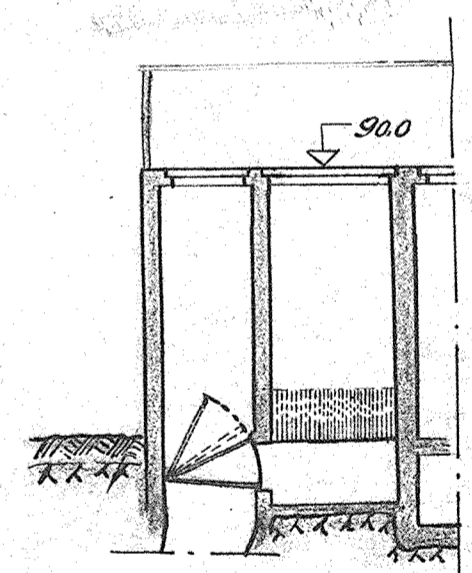
L-L.



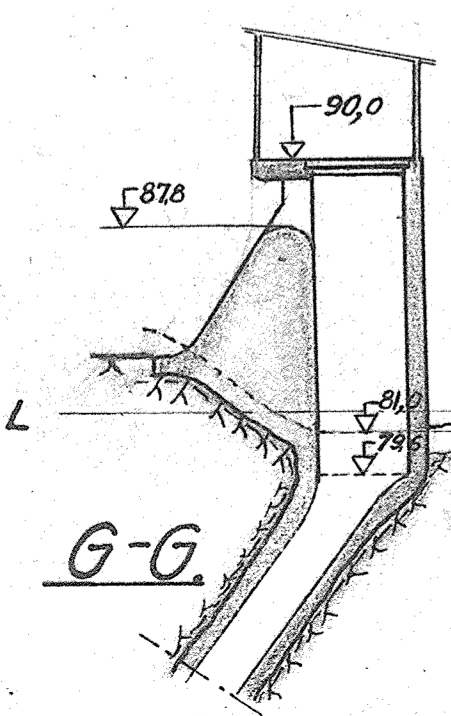
H-H



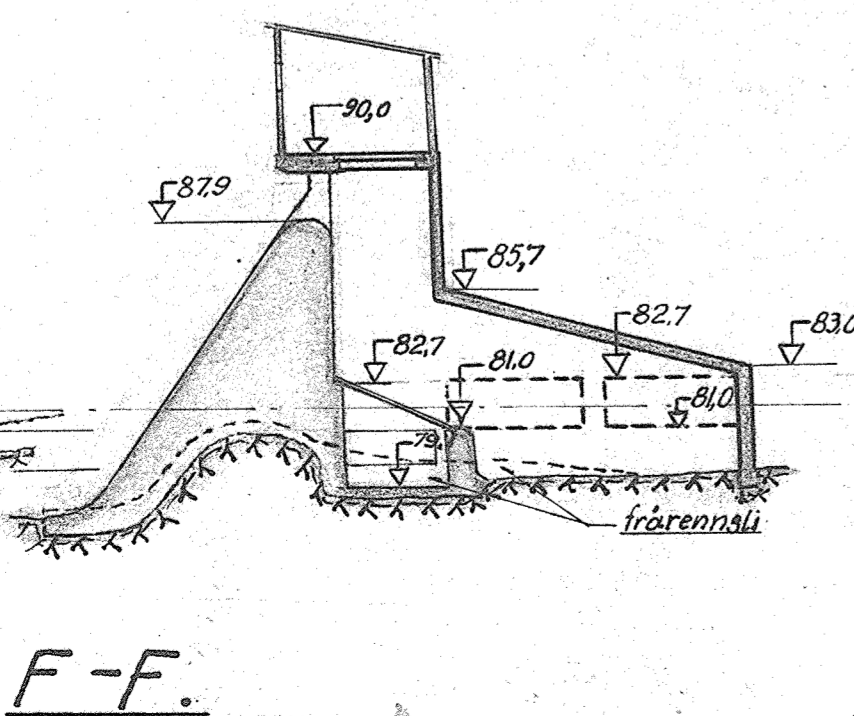
J-J



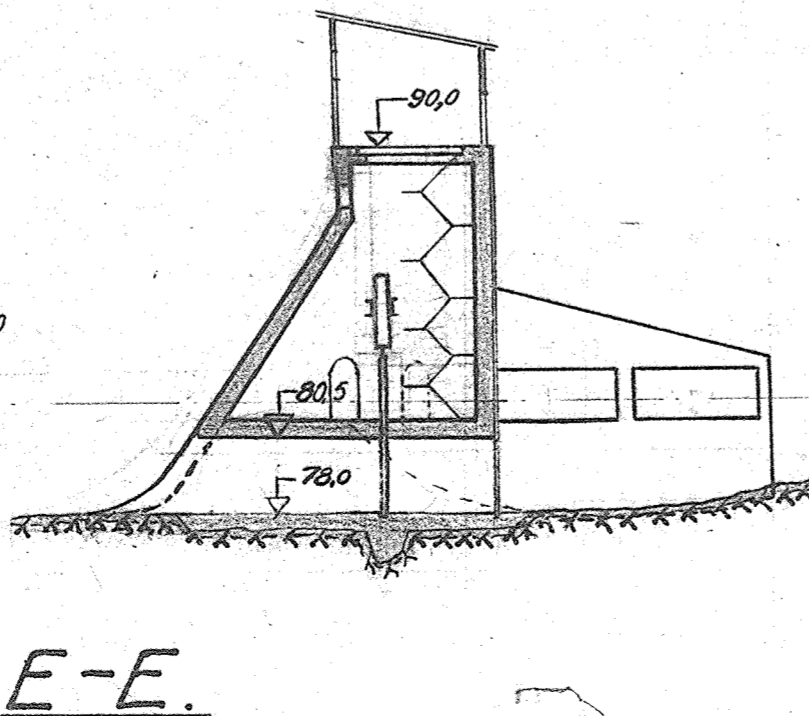
K-K



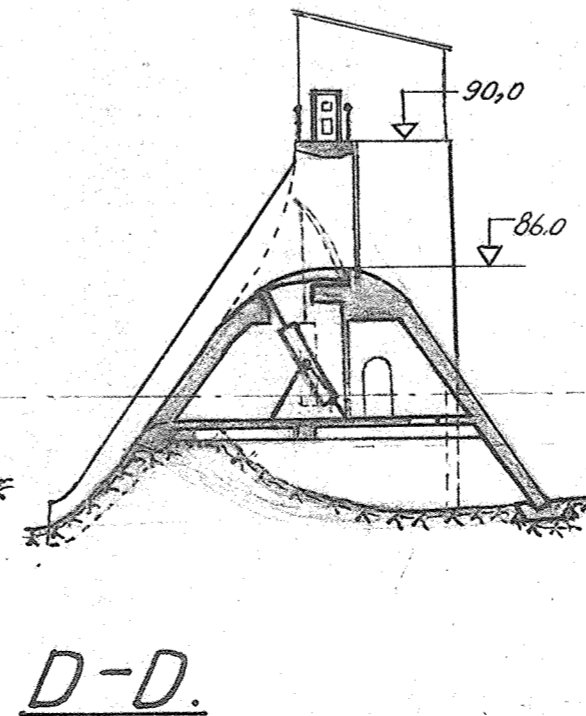
G-G



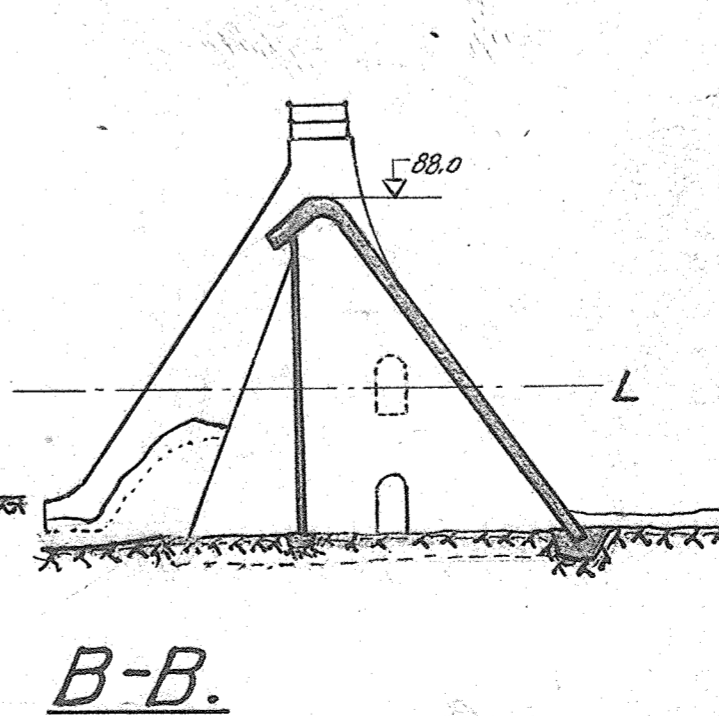
F-F



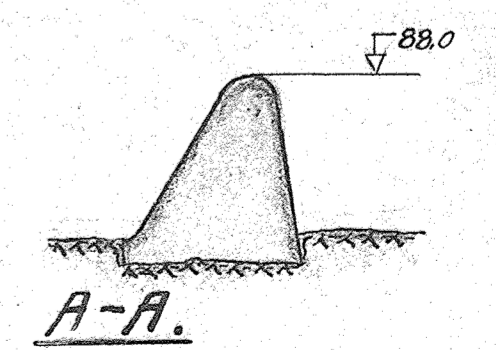
E-E



D-D



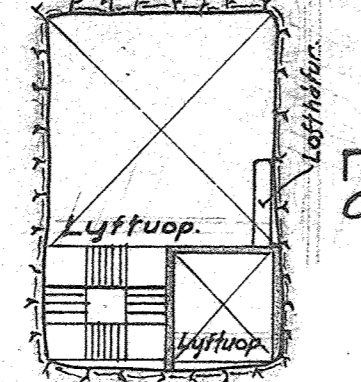
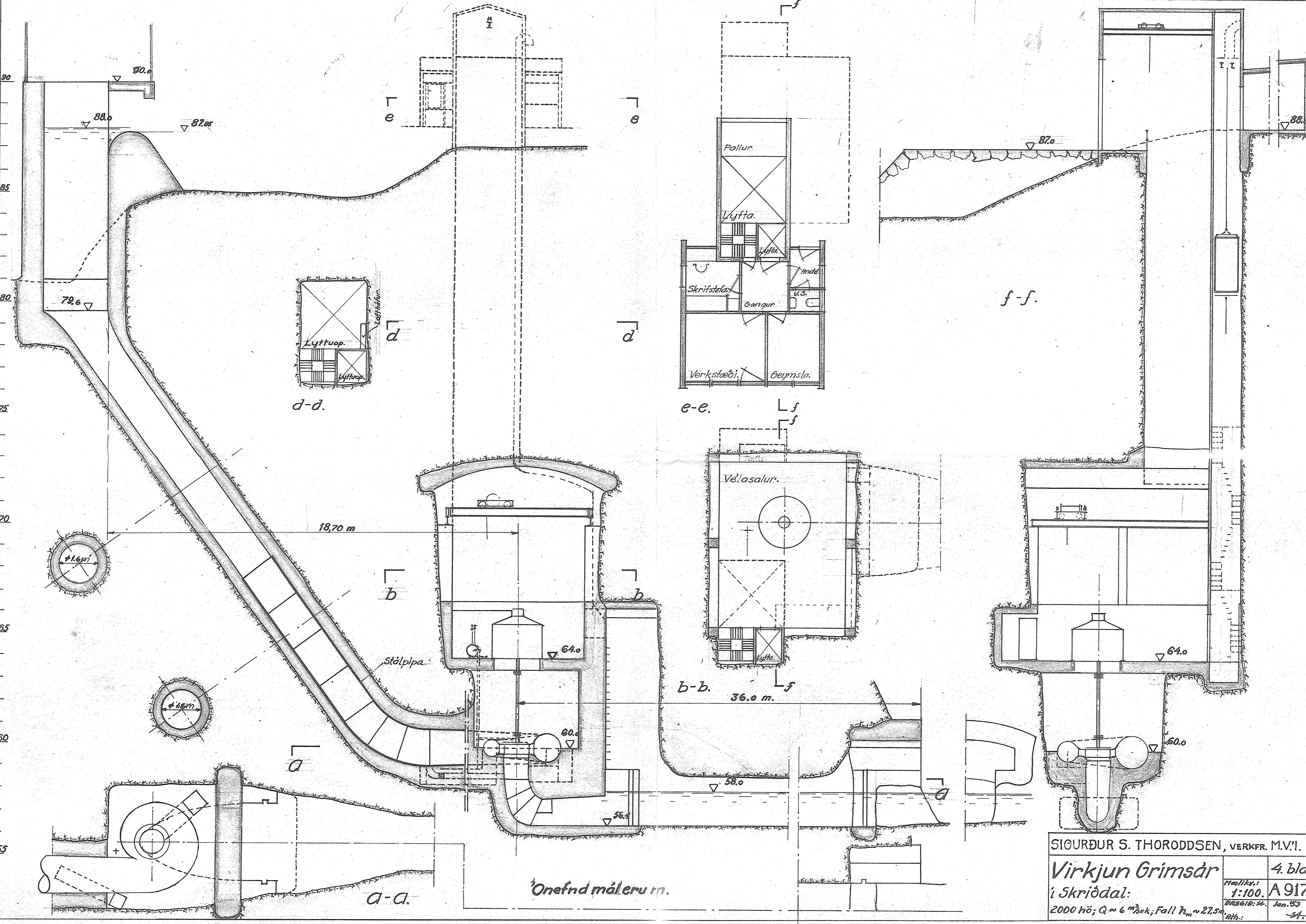
B-B



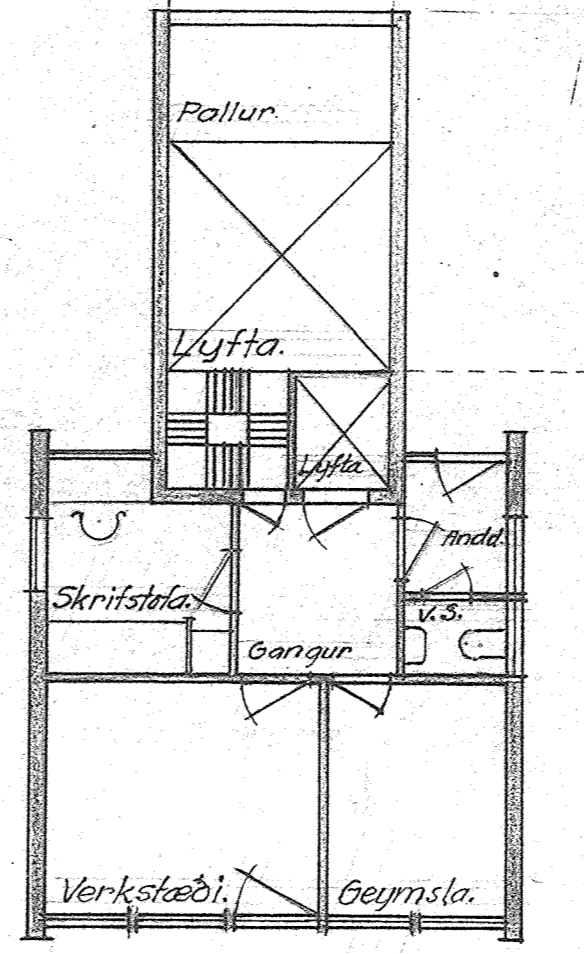
A-A

Ónefnd mál erum.

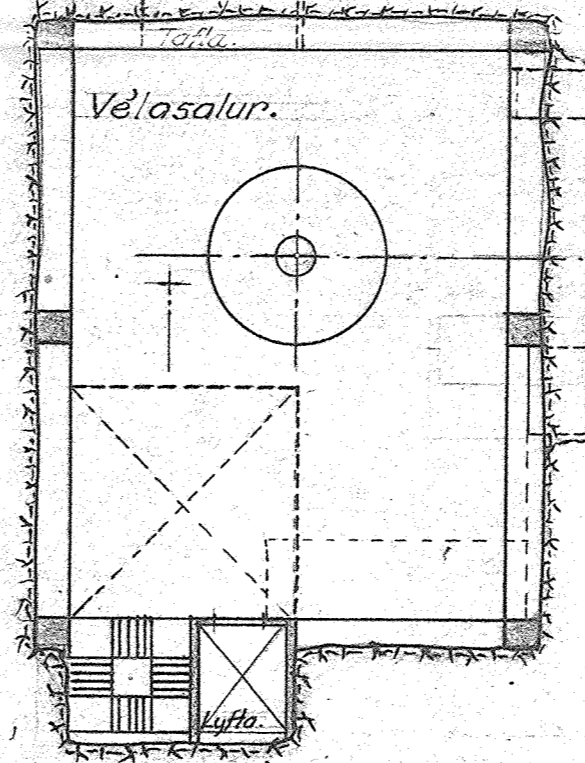
SIGURÐUR S. THORODDSEN, VERKFR. MV.
 Virkjun Grímsár í Skriðdal. 3. blað.
 Mælikv.: 1:250. A 916.
 Dregið: P. G. 11 jan. '53
 2000 hö; Q_{max} = 6 m³/sek. Fall: h_{max} 5 ft.
 Pth. 5 ft.



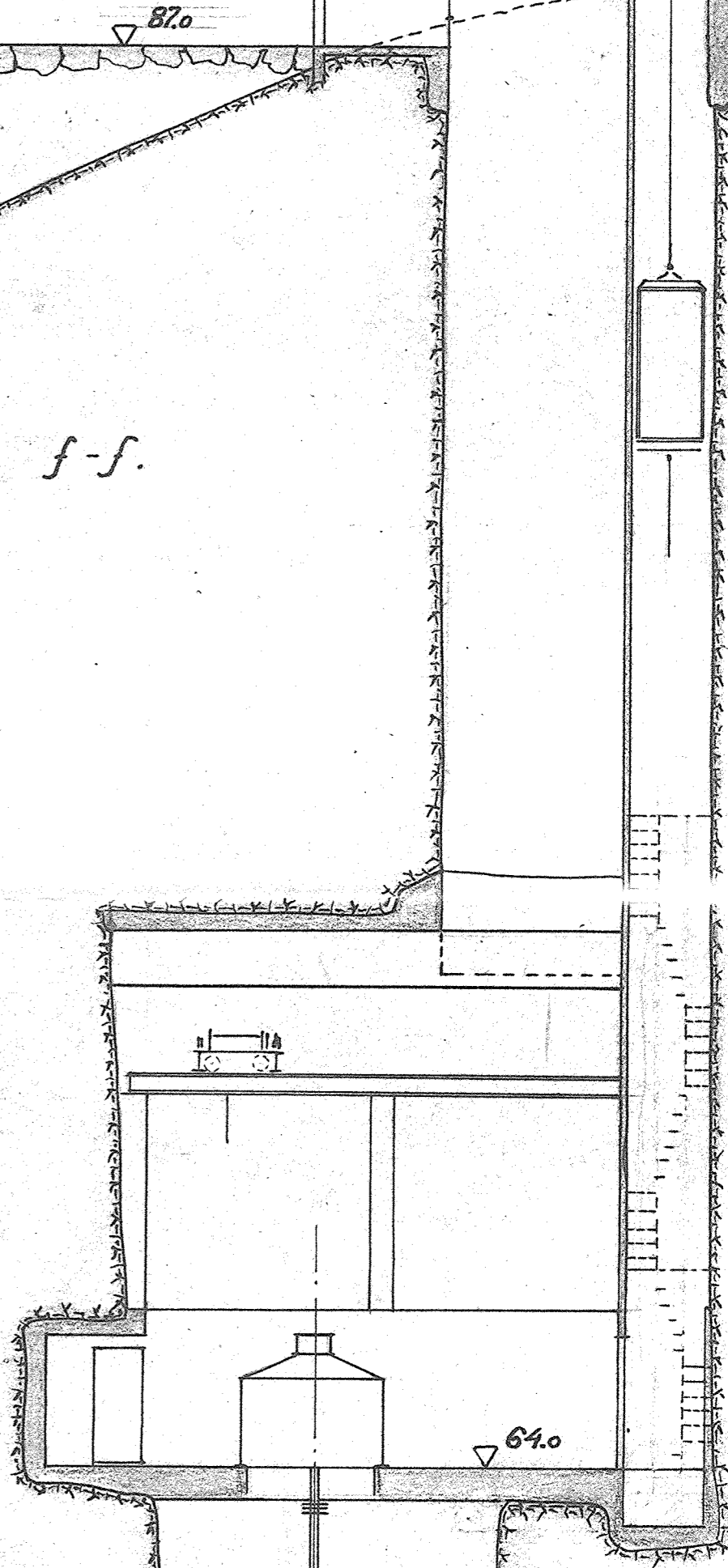
d-d.



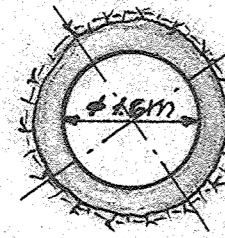
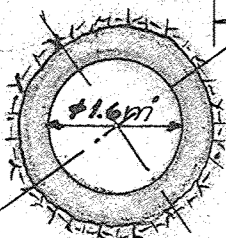
e-e.



b-b.



f-f.



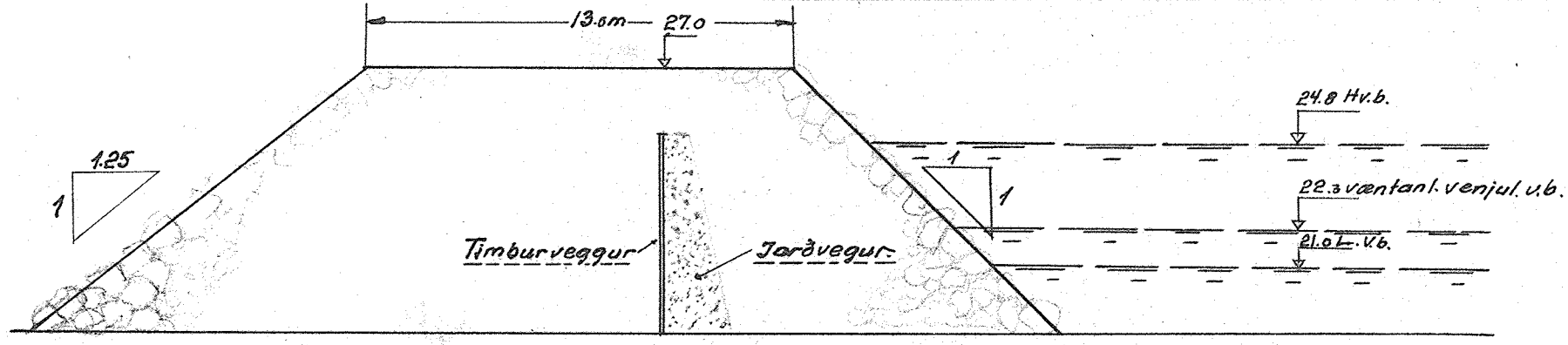
18,70 m

36,0 m

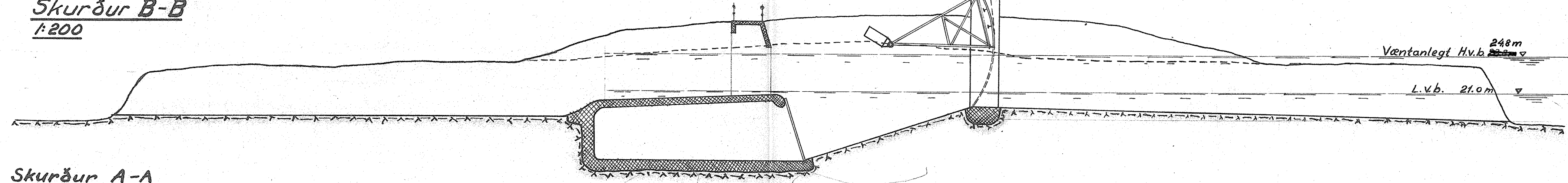
Önefnd máleru m.

SIGURÐUR S. THORODDSEN, VERKFR. M.V.Í.

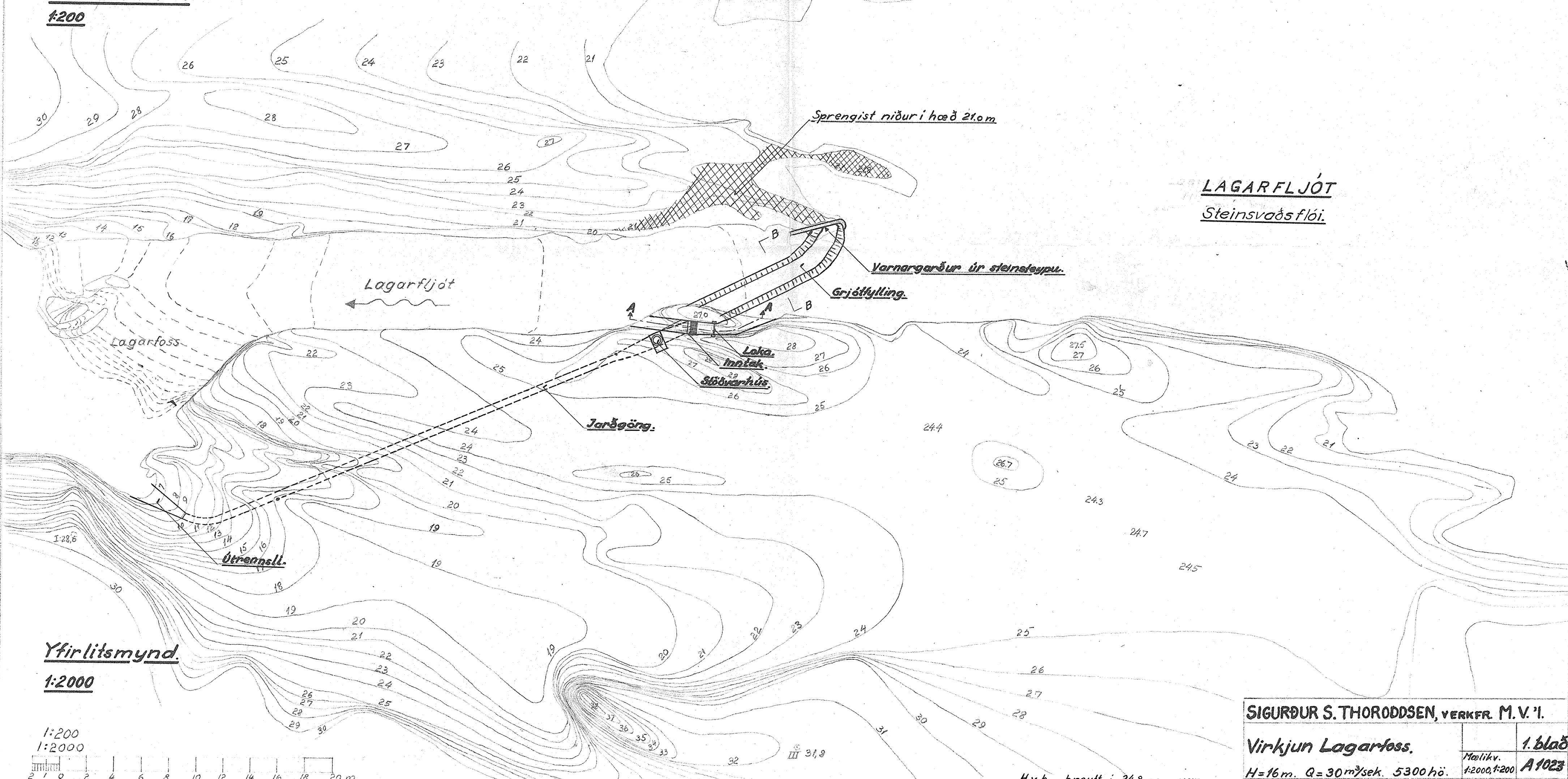
Virkiun Grimsár		4. bla.
í Skriðdal:		Realikv.: A 917
2000 hö; Q ~ 6 m ³ /sek; Fall h _m ~ 27,5 m	PRÆMID: 24.	Jan. 53
	Öth: 24.	



Skurður B-B
1:200

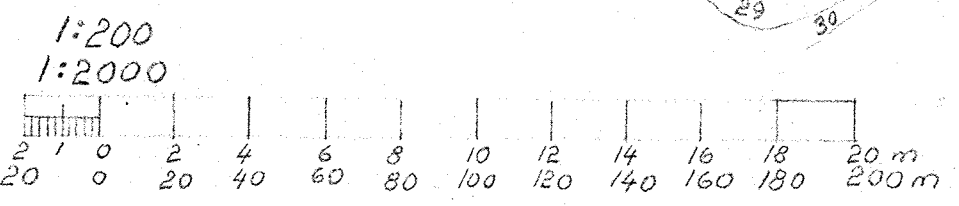


Skurður A-A
1:200



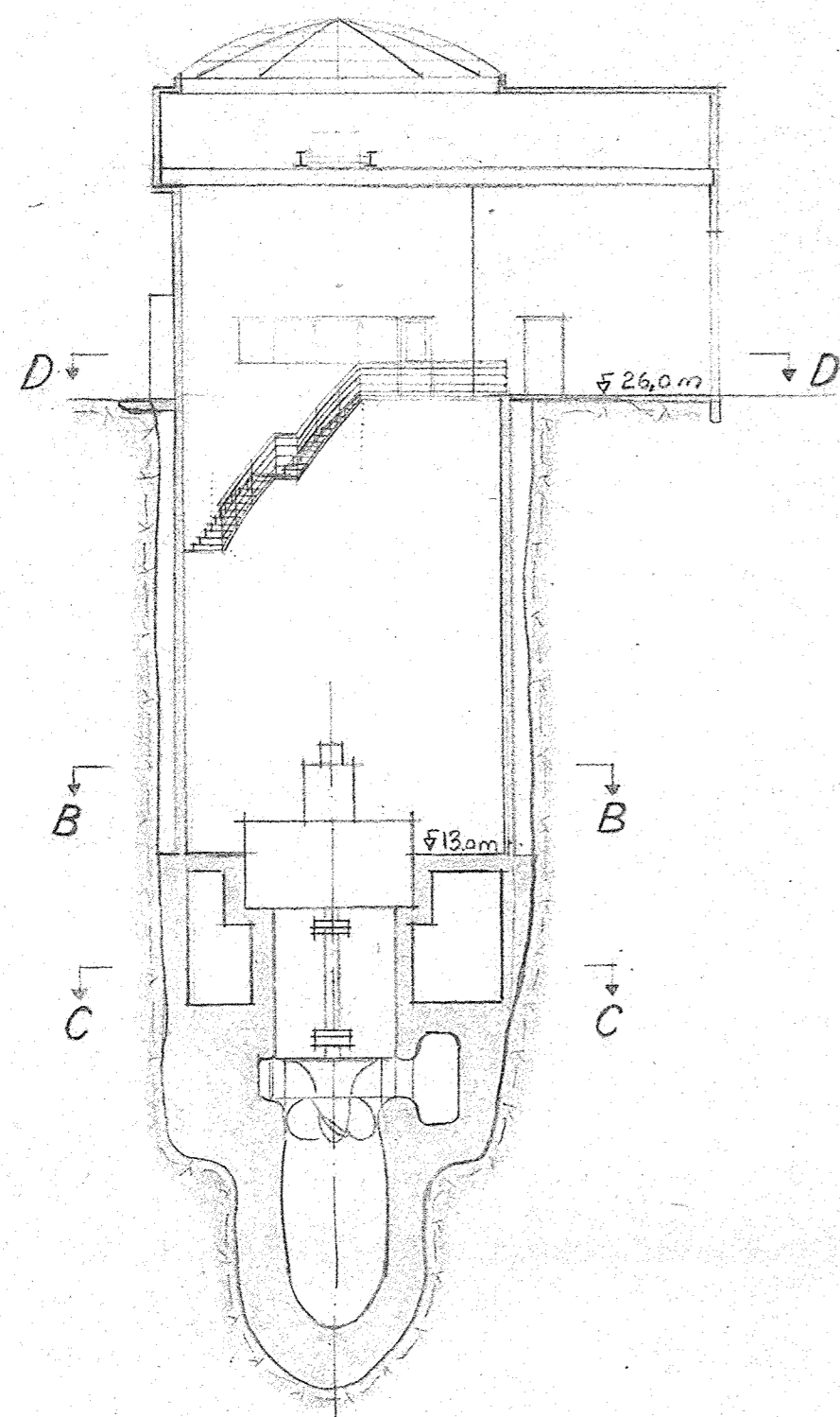
LAGARFLJÓT
Steinsvaðsflói.

Yfirlitsmynd.
1:2000

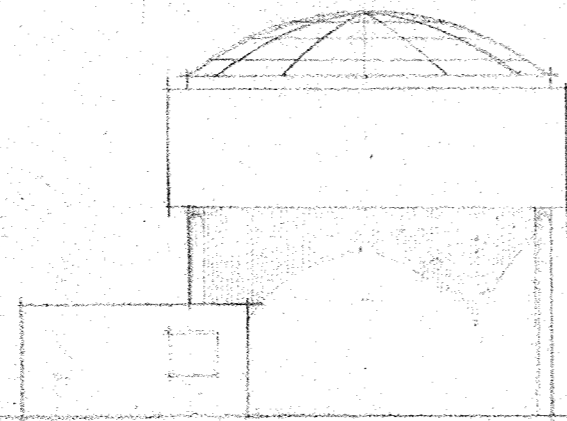


H.v.b. breytt í 24.8 m, var
áður 23.8 m. — 26/3 1954

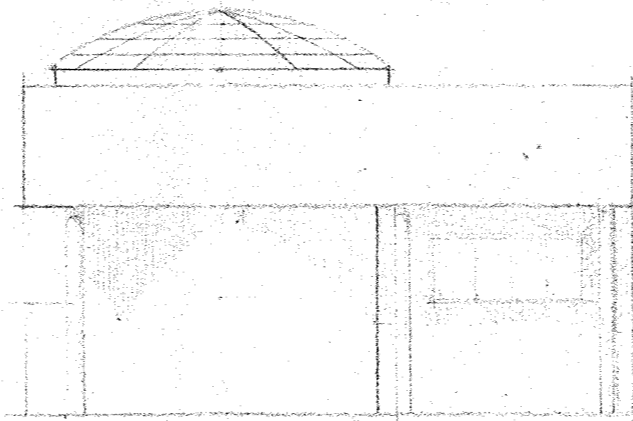
SIGURÐUR S. THORODDSEN, VERFR. M.V.'I.	
Virkjun Lagarfoss.	1. blað
H=16m. Q=30m³/sek. 5300hö.	Mælikv. 1:2000, 1:200
	A 1023



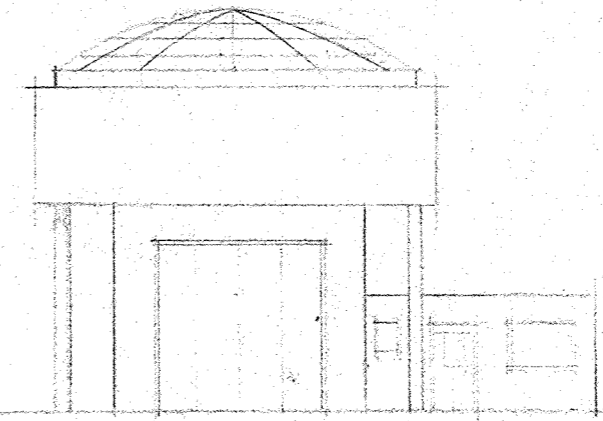
Skurður A-A



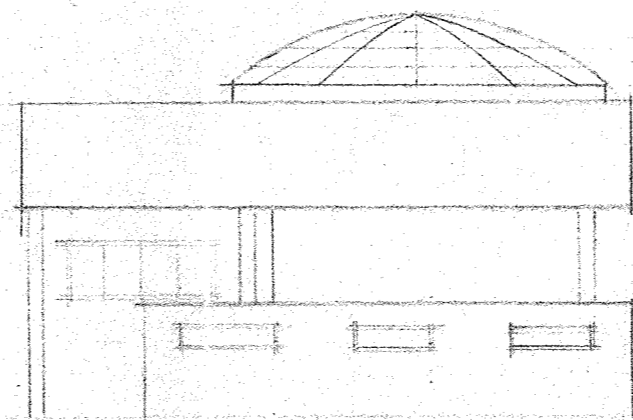
NA-hlið



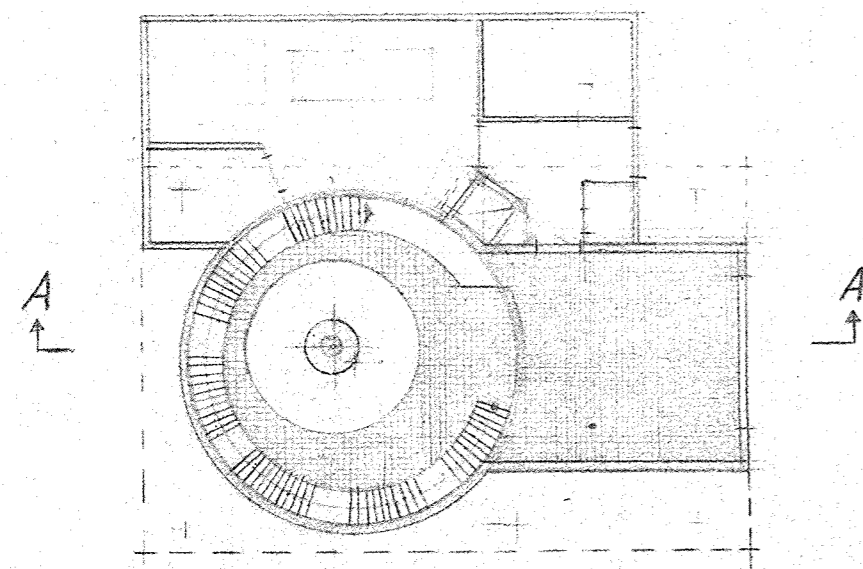
NV-hlið



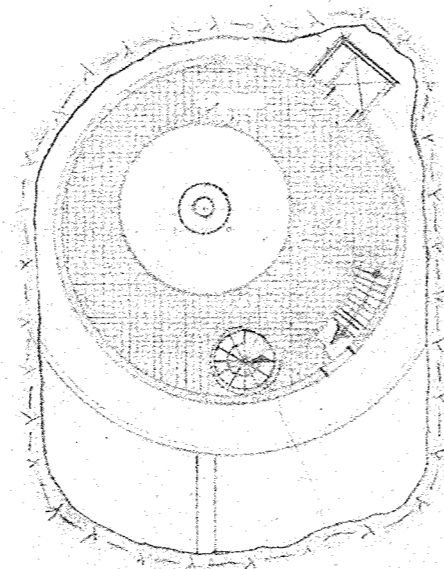
SV-hlið



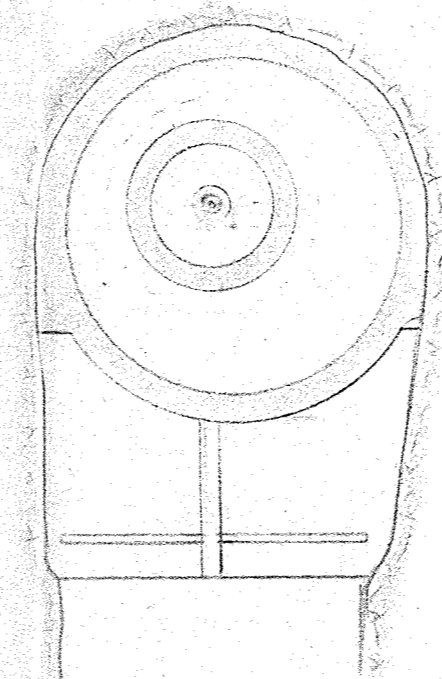
SA-hlið



Skurður D-D



Skurður B-B



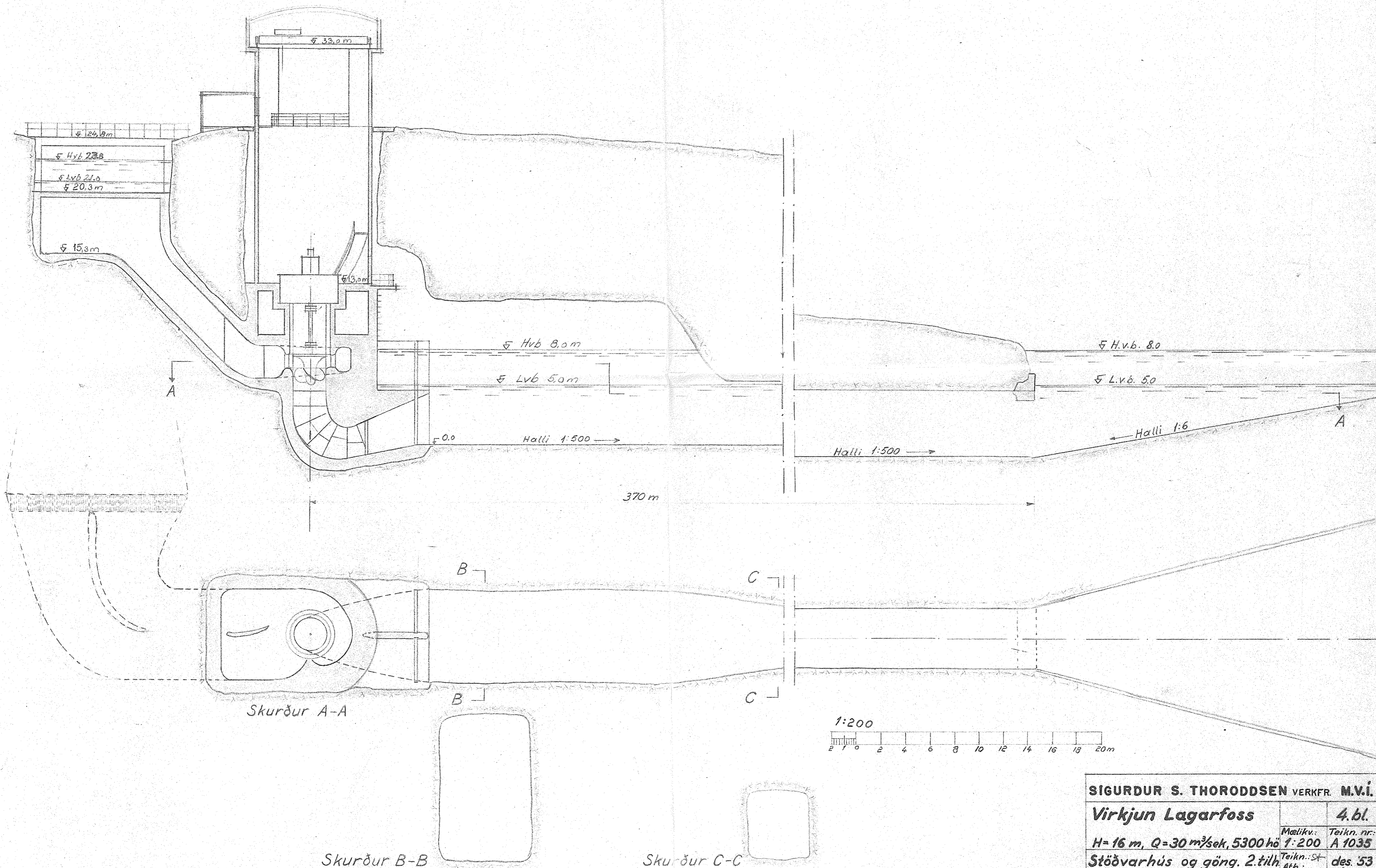
Skurður C-C

1:200

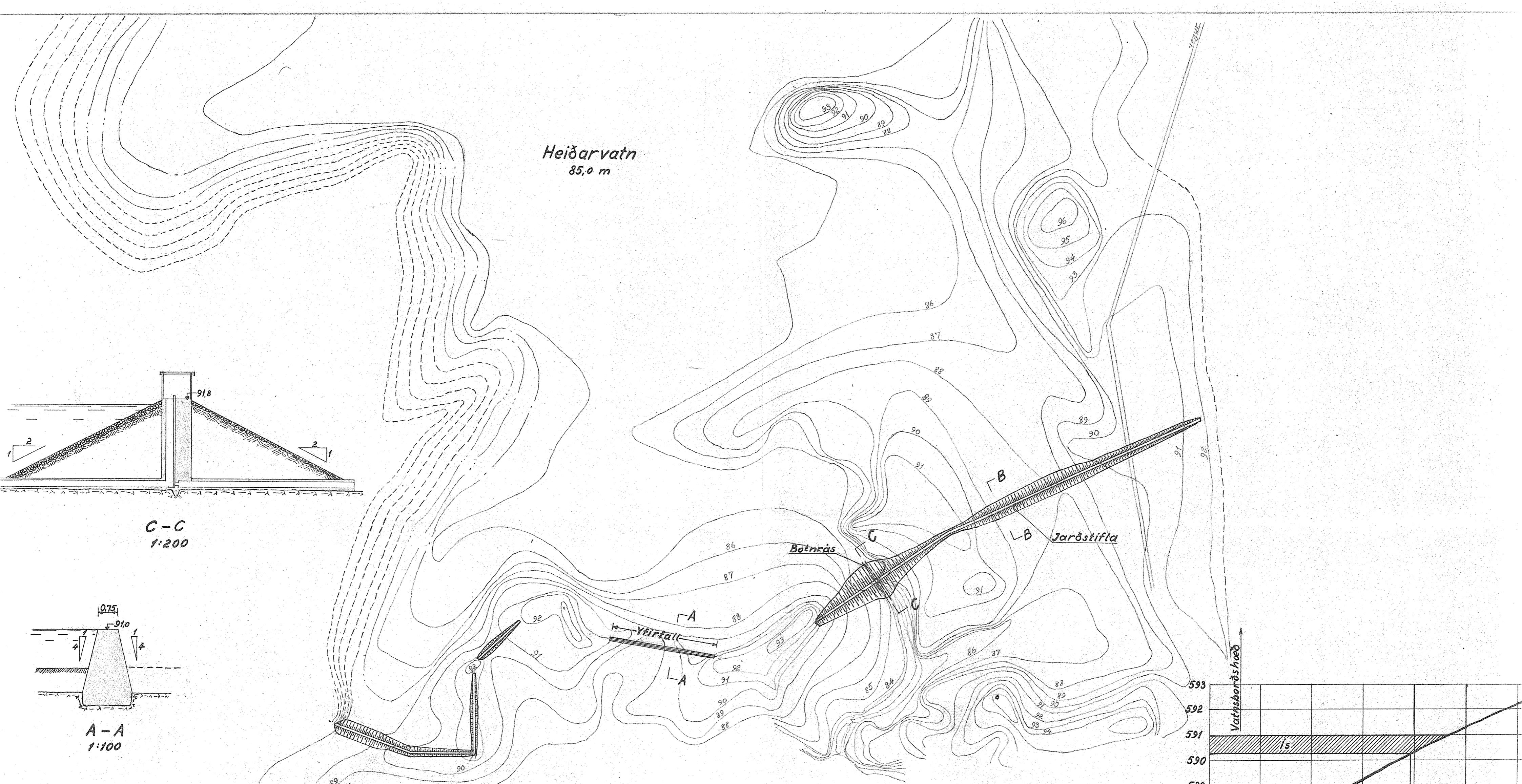


SIGURÐUR S. THORODDSEN VERKFR. M.V.Í.		
Virkjun Lagarfoss		3. bl.
H=16 m, Q=30 m ³ /sek, 5300 hö	Málkv.: 1:200	Teikn. nr.: A 1034
Stöðvarhús. 2.tilh.	Teikn.: St	Ath.: des '53

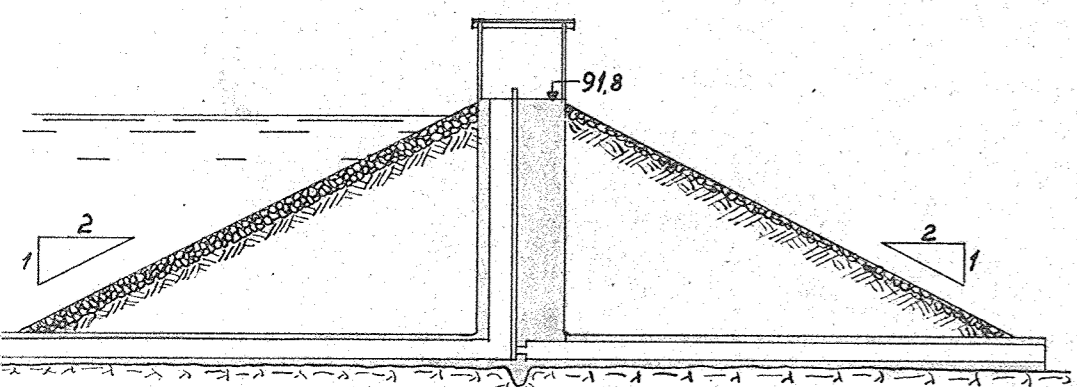
Langskurður



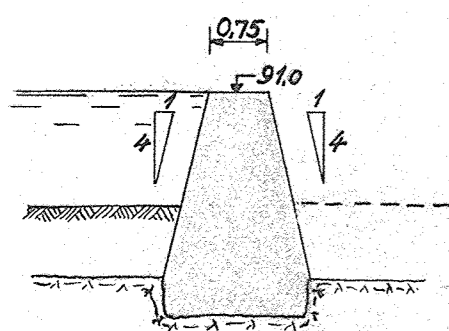
SIGURDUR S. THORODDSEN VERKFR. M.V.I.	
Virkjun Lagarfoss	4.bl.
<i>H=16 m, Q=30 m³/sek, 5300 hö</i>	Melikv.: 1:200
Stöðvarhús og göng. 2.tilh.	Teikn.nr.: A 1035
	Teikn.: St
	Ath.: des '53



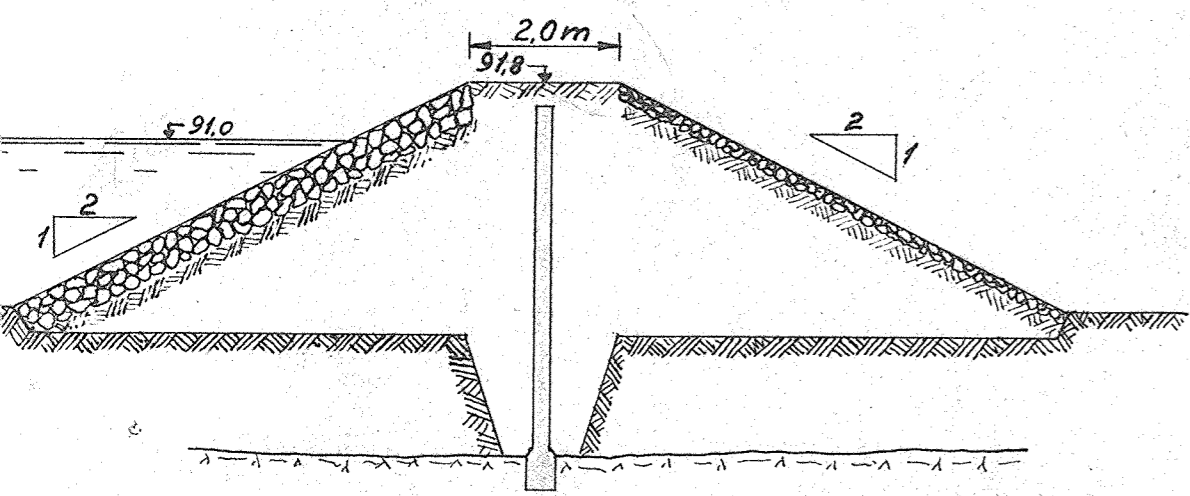
Heiðarvatn
85,0 m



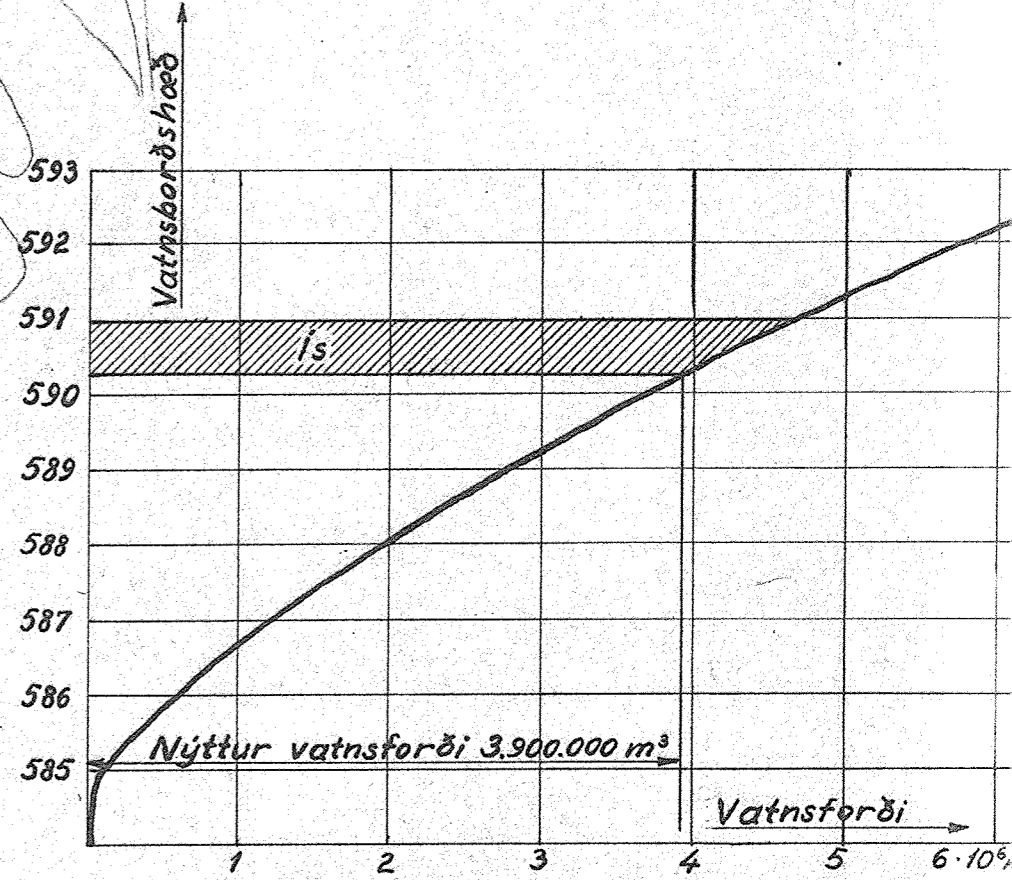
C-C
1:200



A-A
1:100



B-B
1:100



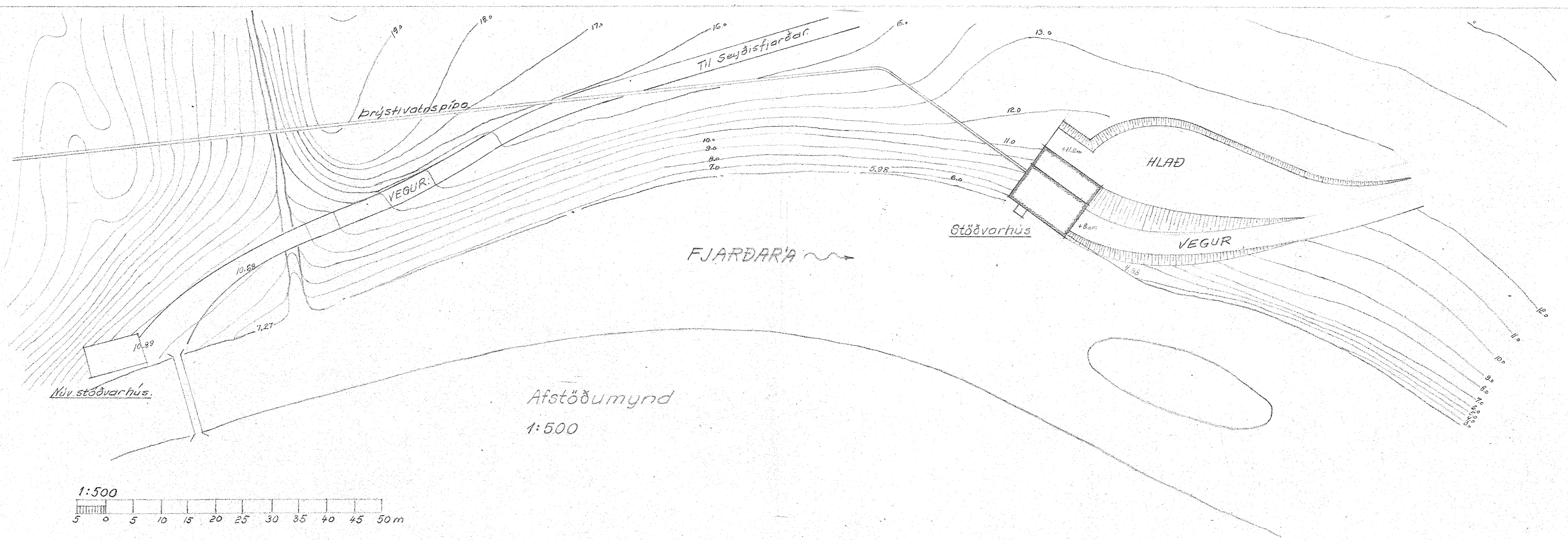
Hæðartölur í m. yfir 500 m yfir sjávarmál.

Milli hæðalína 1,0 m. • Mælistaðir.

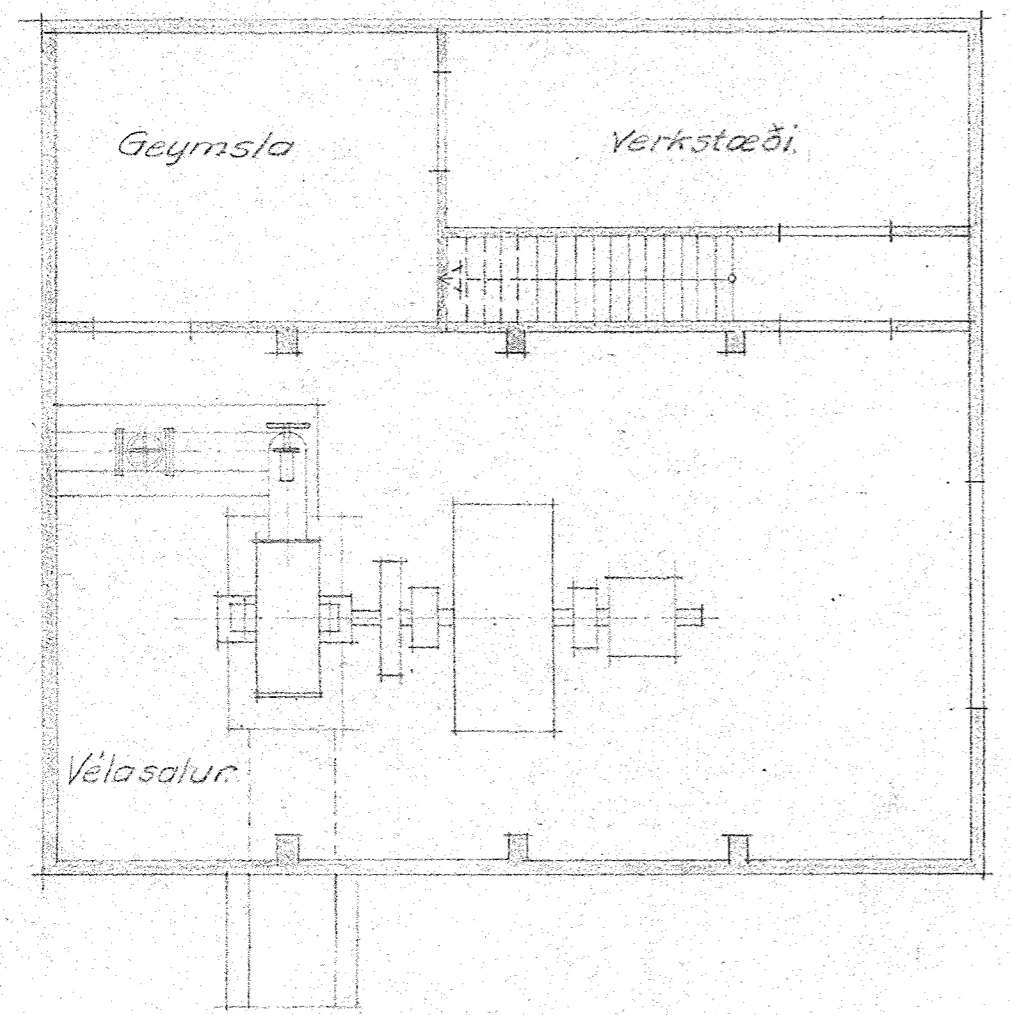
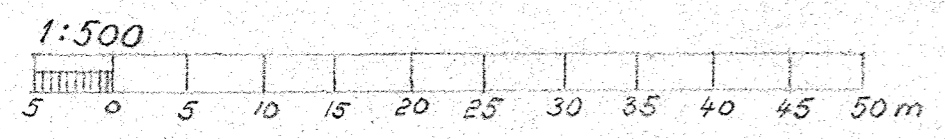
Mælinguna gerði Sigurður Thoroddsen í byrjun ág. 1943.

Punktalínur dregnar eftir ágizkun.

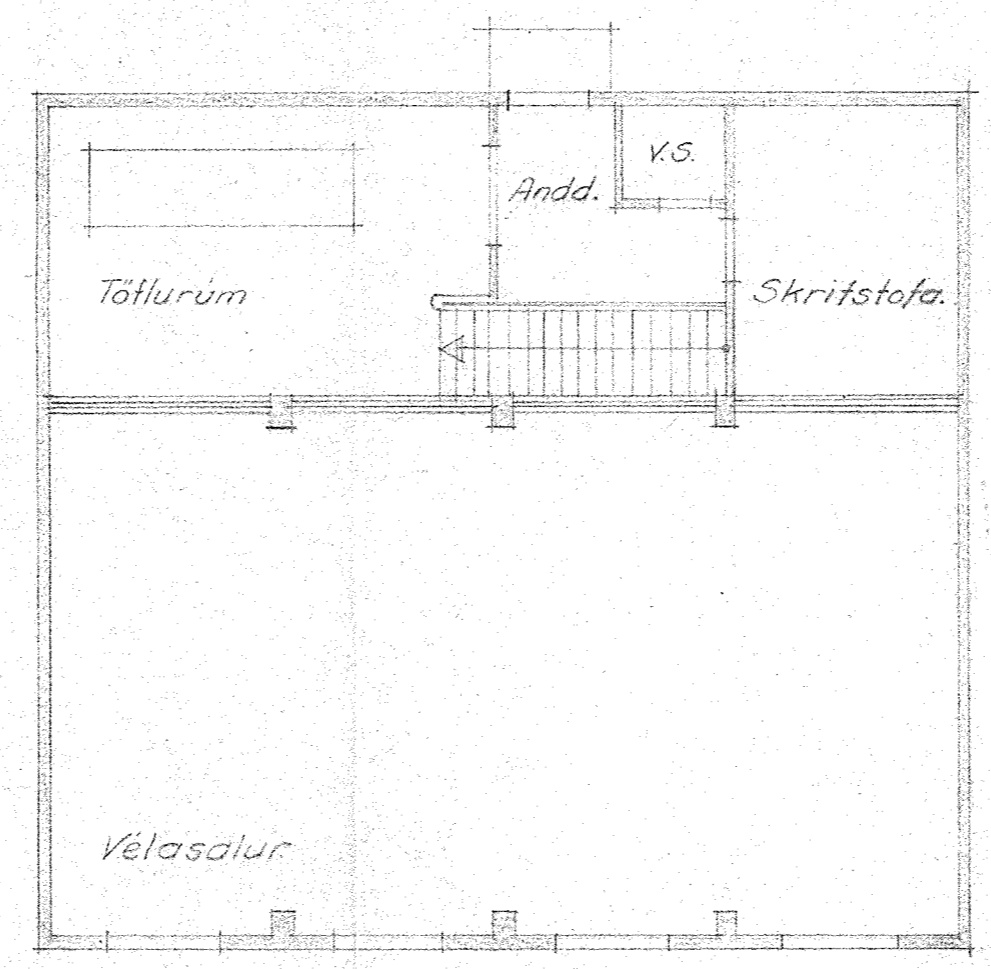
SIGURÐUR S. THORODDSEN VERKFR.M.V.	
Virkjun Fjarðarár	6. bl.
H=340 m, Q=108 m ³ /sek, 3550 hó	M.: 1:2000 Teikn. nr. 1:200 1:100 A 1036
Stifla Heiðarvatns	Teikn.: G.M. des 5. Ath.: S



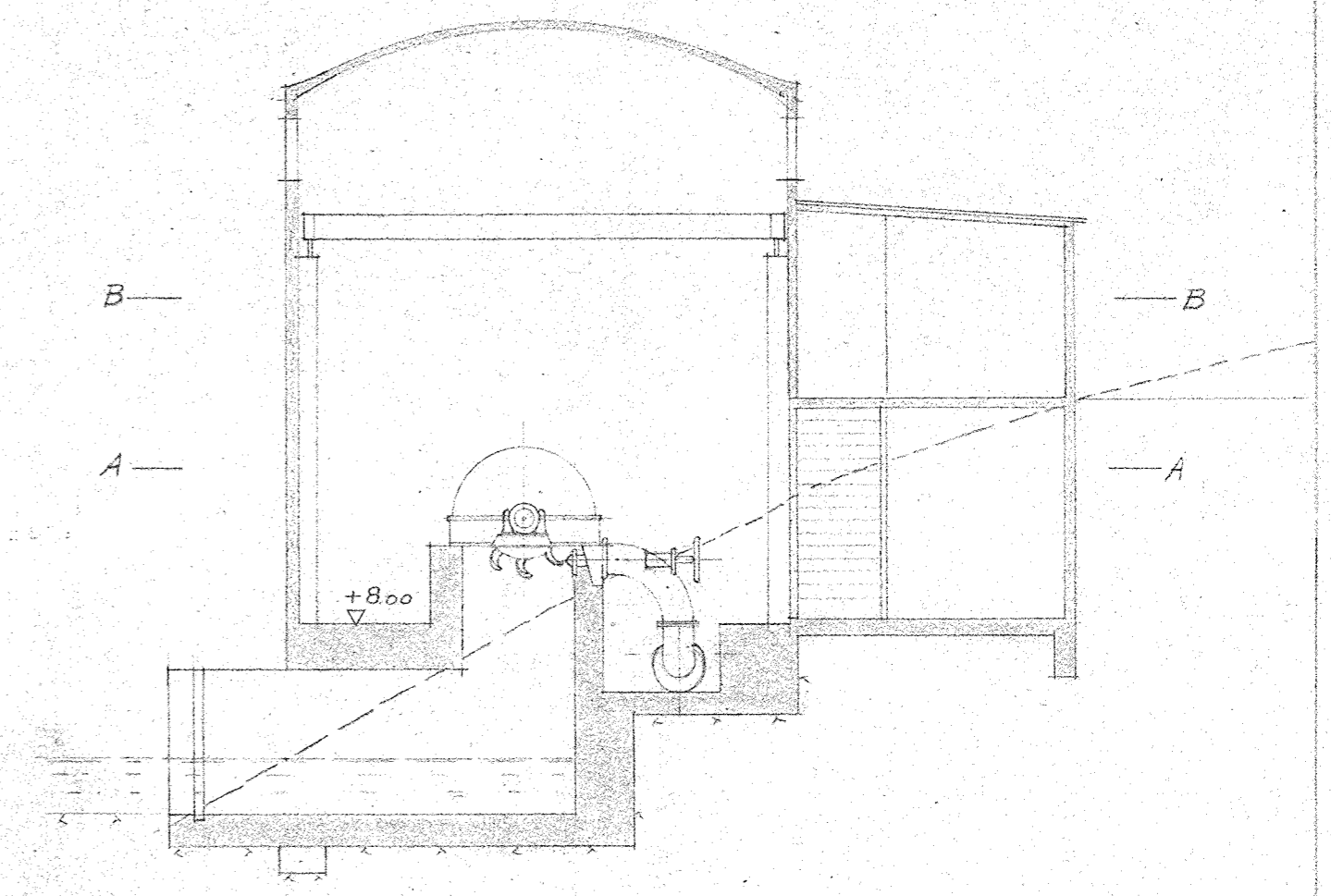
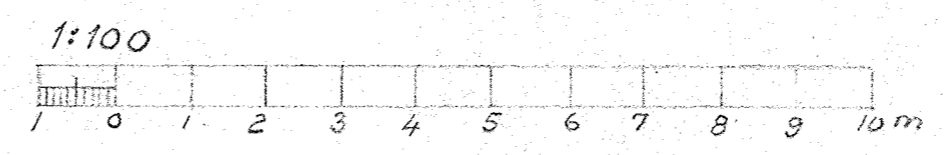
Afstöðumynd
1:500



Skurður A-A
1:100

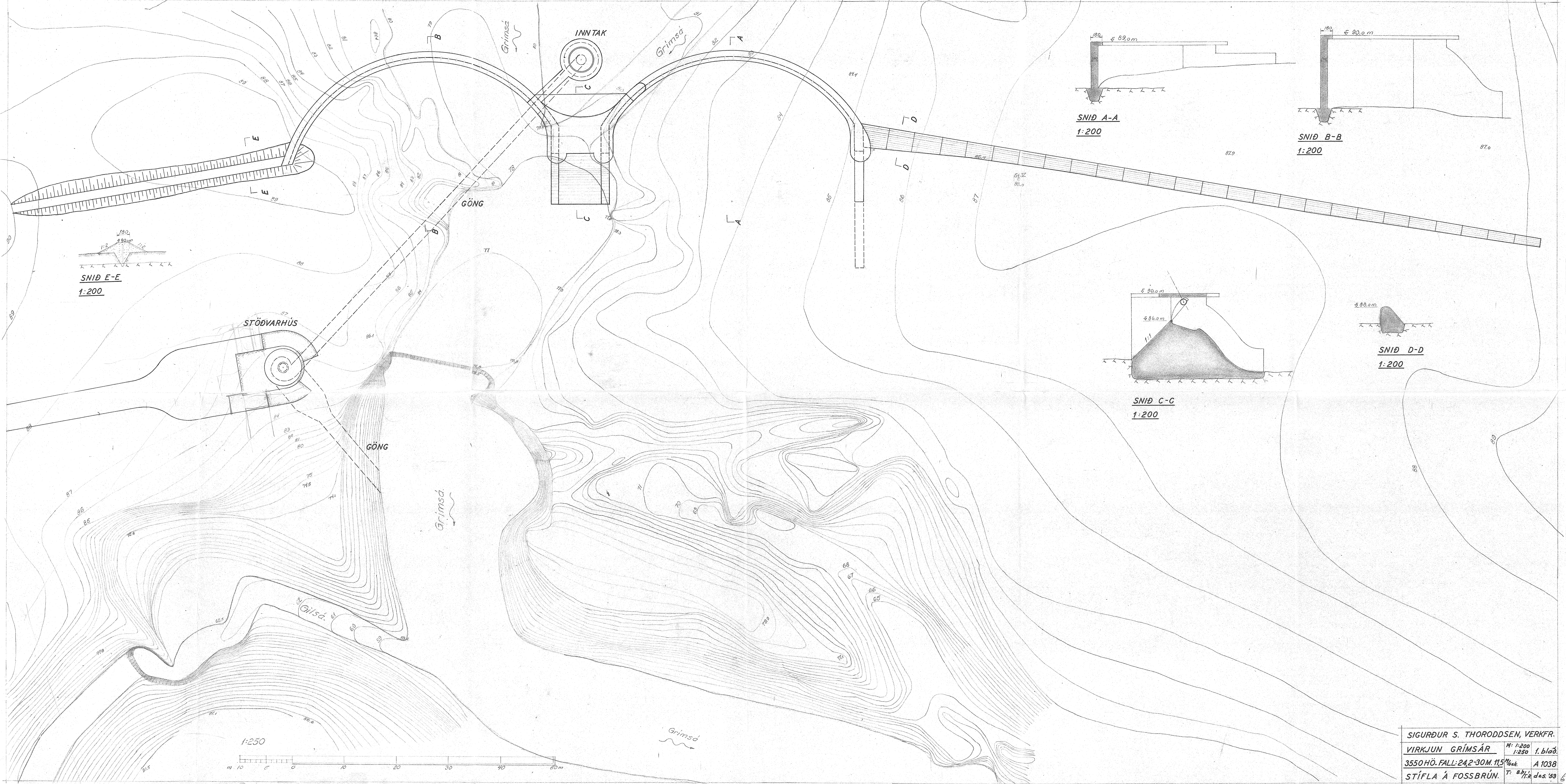


Skurður B-B
1:100



Þverskurður
1:100

Sigurður S Thoroddsen verkfr. MVI		
Virkjun Fjarðarar		5. Bl.
H=340m Q=1.08 m ³ /s 3550hp	Maðl. kvæði 1/500 1/100	Teikning Nr. A1037
Stöðvarhús.	Teikn.: Bp Ath.: St	des 1933 Bp



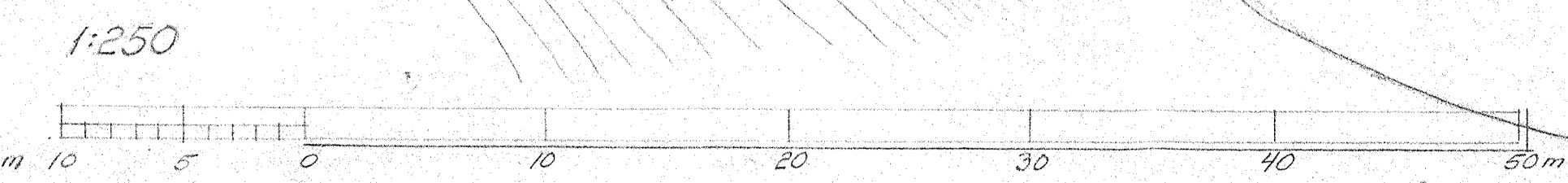
SNID E-E
1:200

SNID A-A
1:200

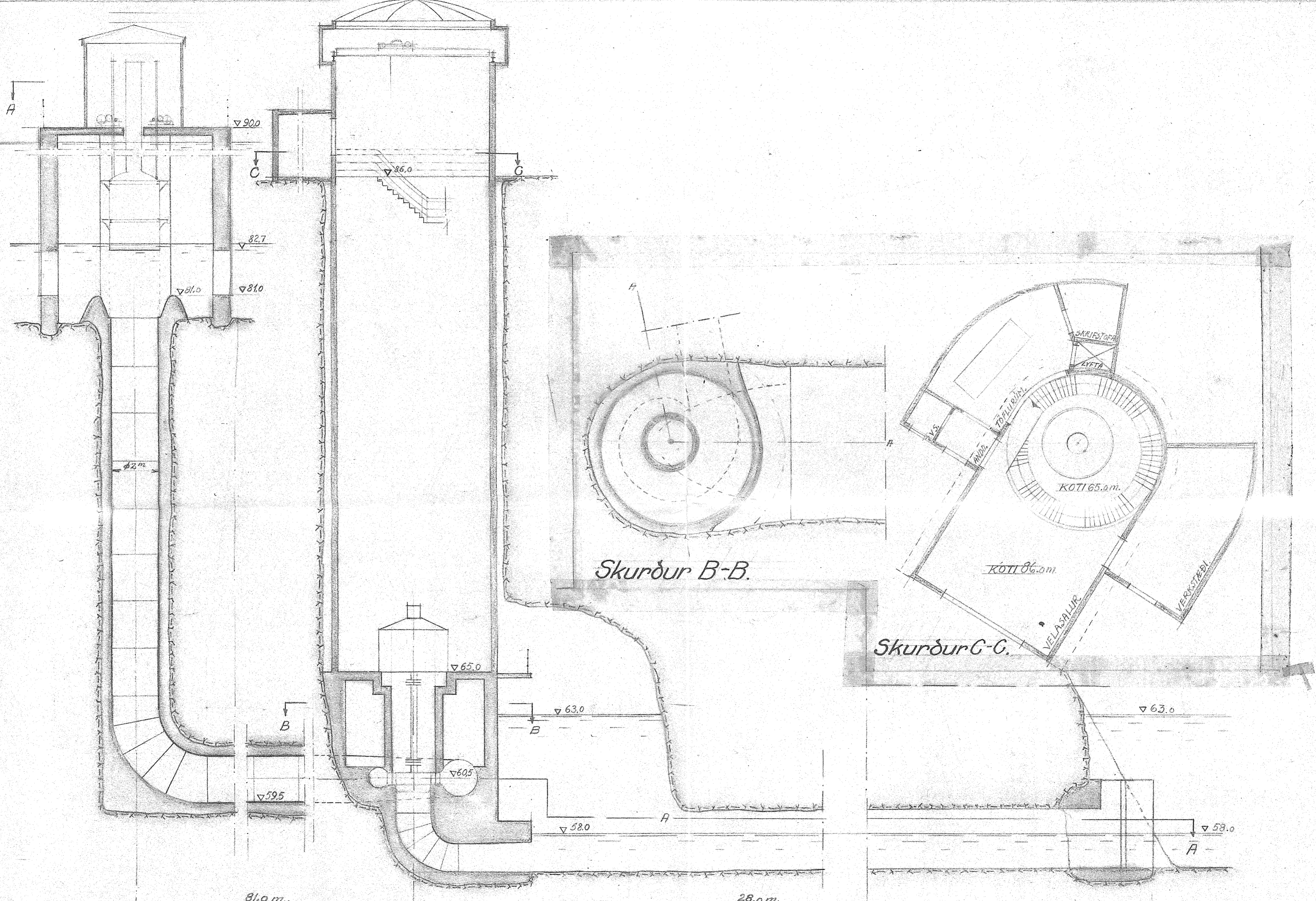
SNID B-B
1:200

SNID C-C
1:200

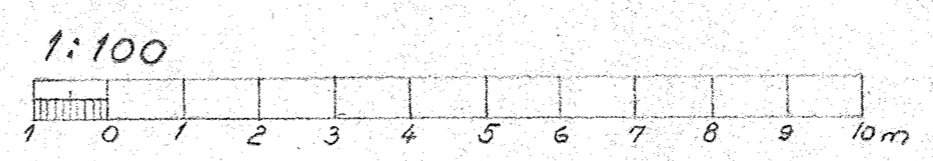
SNID D-D
1:200



SIGURDUR S. THORODDSEN, VERKFR.
 VIRKJUN GRÍMSÁR M: 1:200 1. blað.
 3550 HÖ. FALL: 242-30 M. 11,5 % A 1038
 STÍFLA Á FOSSBRÚN. T: 8. 11. 1917 des 539

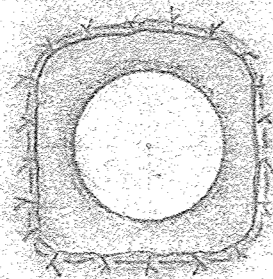


Skurður í inntak, stöðvarhús og göng.

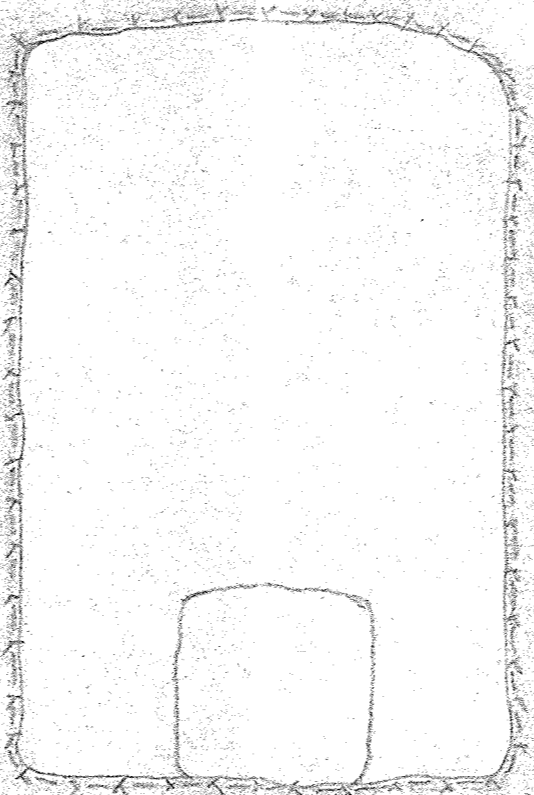


Skurð A-A; D-D og E-E sjá 3. blað.

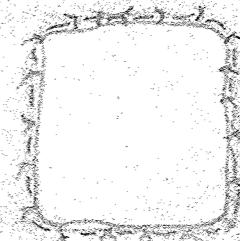
SIGURÐUR S. THORODDSEN, VERKFR. M.V.I.		
VIRKJUN GRIMSAR.		2. blað
3550 hö. Fall: 24,2-30 m Q: 11,5 m ³ /sek.	Málsta.: 1:100.	A1039.
Inntak, stöðvarhús og göng.	Þregið St. 1 des. '53	8th



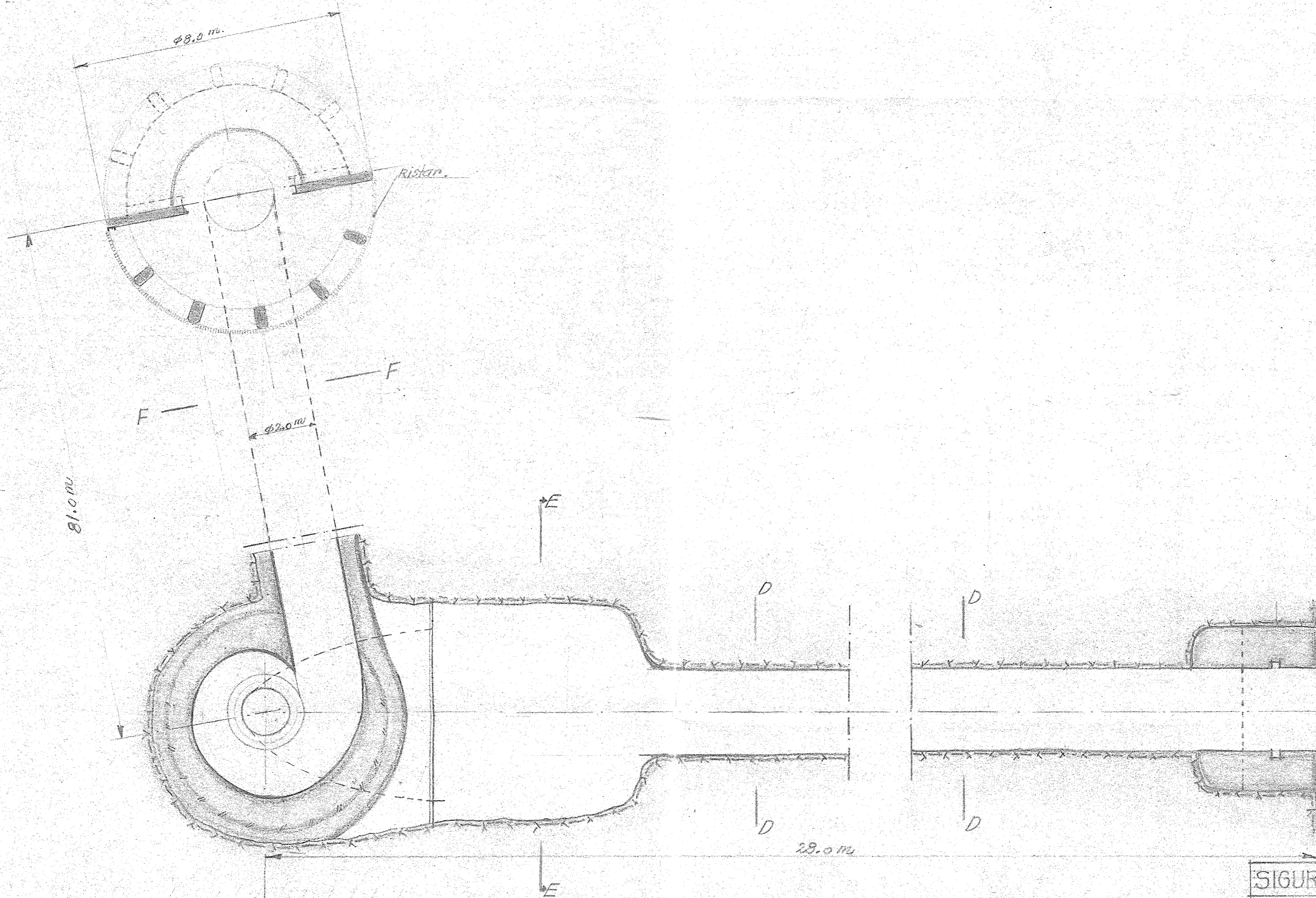
Skurður F-F.



Skurður E-E.



Skurður D-D.



Skurður A-A (sjá 2. blöð.)

1:100.

SIGURÐUR S. THORODDSEN, VERKFR.M.V.

VIRKJUN GRIMSÁR.

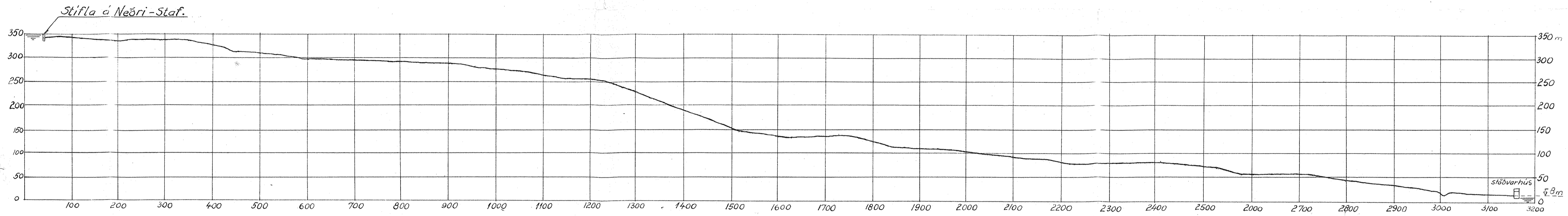
3. blöð.

3550 hö. Fall: 24.2-30 m Q=115 m³/s

Proj. 1:100. A1040.

Göng og inntak.

Dregið af 1 des. '53



LANGSNIÐ Í PÍPULEIÐ

1:5000

SIGURÐUR S. THORODDSEN,		
VIRKJUN FJARÐARÁR		
LANGSNIÐ Í PÍPULEIÐ	M: 1:5000	A1072
	T: T. 'A.	marz '54