

Gunnar Þorbergsson
81/01



ORKUSTOFNUN
Raforkudeild

REI GREINARSTOFNUN

LANDMÆLINGAR VEGNA JARÐFRÆÐIRANNSÓKNA Á
FLJÓTSDALSHÉIÐI 1980 I

Gunnar Þorbergsson

GP-81/01

Febrúar 1981

ORKUSTOFNUN
Vatnsorkudeild

GREINARGERÐ

LANDMÆLINGAR VEGNA JARÐFRÆÐIRANNSÓKNA Á
FLJÓTSÐALSHEIÐI 1980 I

Gunnar Þorbergsson

GP-81/01

Febrúar 1981

ORKUSTOFNUN
LANDMÆLINGAR
1981-02-25

Greinarserd
GP-81/01

LANDMÆLINGAR VEGNA JARDFRÆÐIRANNSOKNA
A FLJÓTSDALSHÉIÐI 1980 I

Staðsetningskort og hnitalistar

MÆLINGAR

I september 1980 mældu landmælingamenn OS að venju inn hla, sem rannsóknarmenn höfðu sett við borholur og sprengisíða. Hér var um að ræða nokkrar kjarnaborholur, loftborholur, sprengisíða og gryfjur, svo og fjölda cobra-borhola. Rannsóknarmenn höfðu sjálfir lést lesu flestra gryfja og sprengisíða miðað við cobra-borholur í mælibókum sínum, og því þurftum við aðeins að mæla inn fáeina síða og gryfjur.

Vid fundum hla syðst við Saudárvatn á Hraunum, vestast við Hólkná og norst nordan Bessastæðaár. Aðvelt var að komast um mælisvæðið vesna vegaserðar á heidinni og sóðrar tíðar. Mælingarnar gengu fljótt og vel með nýjum lensdarmæli, Geodimeter 14A. Þó var stansarmæling notuð þar sem það átti við.

URVINNSLA

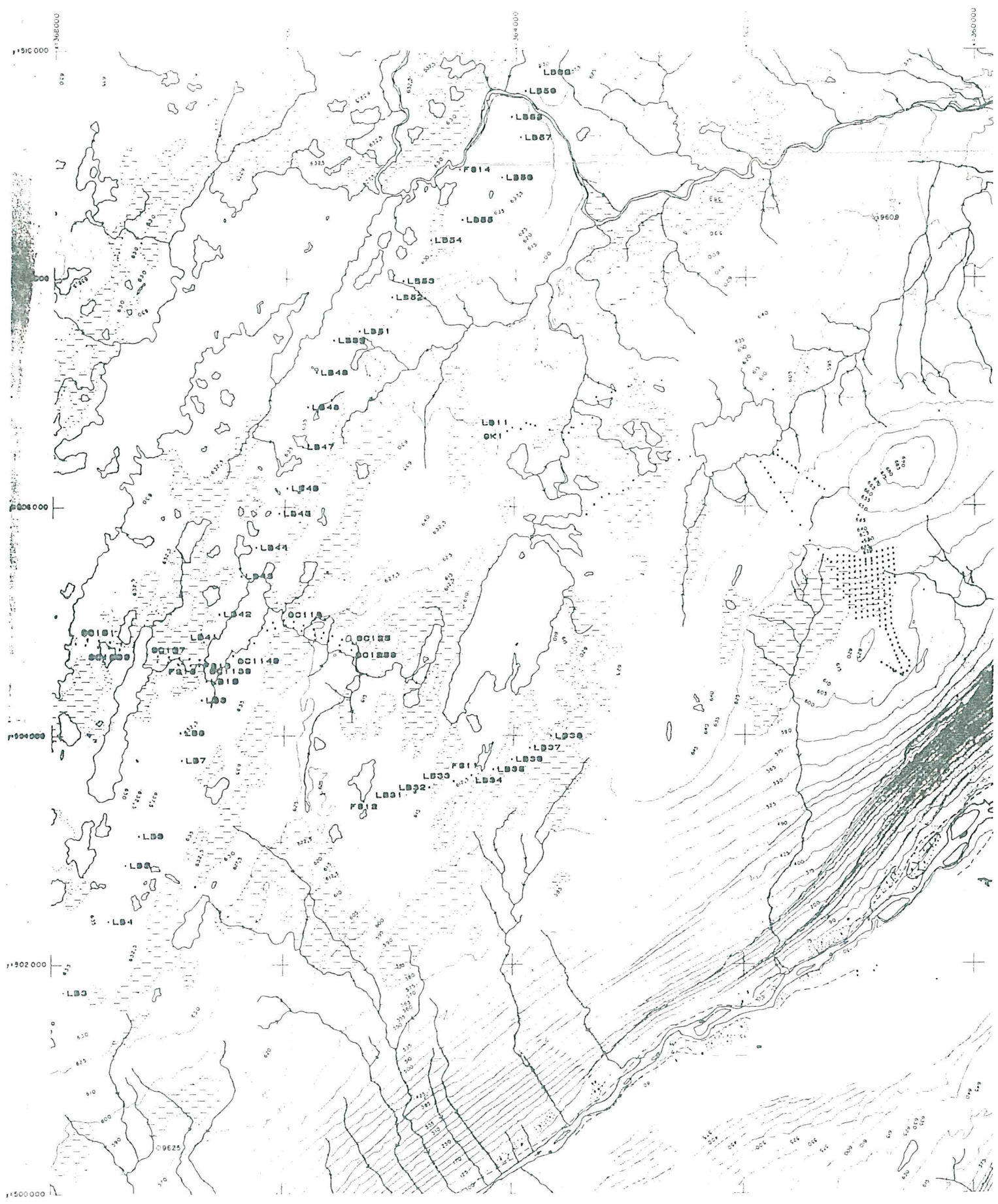
Tölva að serd PDP11/34 ásamt teiknibordi (TEKTRONIX 4663) heid okkar á Orkustofnun. Nokkur tölvuforrit voru því serd til að vinna úr mælingum eins og þeim, sem við höfðum nálokið á Fljótsdalsheidi. Forritunum og videisandi skrá er lést lauslega í viðauka við greinarserd GP-81/02.

NIDURSTÖÐUR

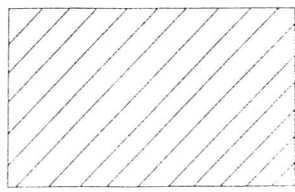
Nidurstöður mælinganna eru geymdar á disklingum og á teikningum á Orkustofnun. Þær eru teknar saman til yfirlits í þessari greinarserd og greinarserd GP-81/02, sem fjallar um sama efni. Þessi greinarserd inniheldur teikningarnar smákkáðar niður í A4 og hnitaskrá yfir aðra punkta en cobra-borholur borðar 1980. Greinarserd GP-81/02 hefur að geyma skrá yfir cobra-borholur borðar 1980 auk ádurnefnds viðauka.

Staðsetningskort

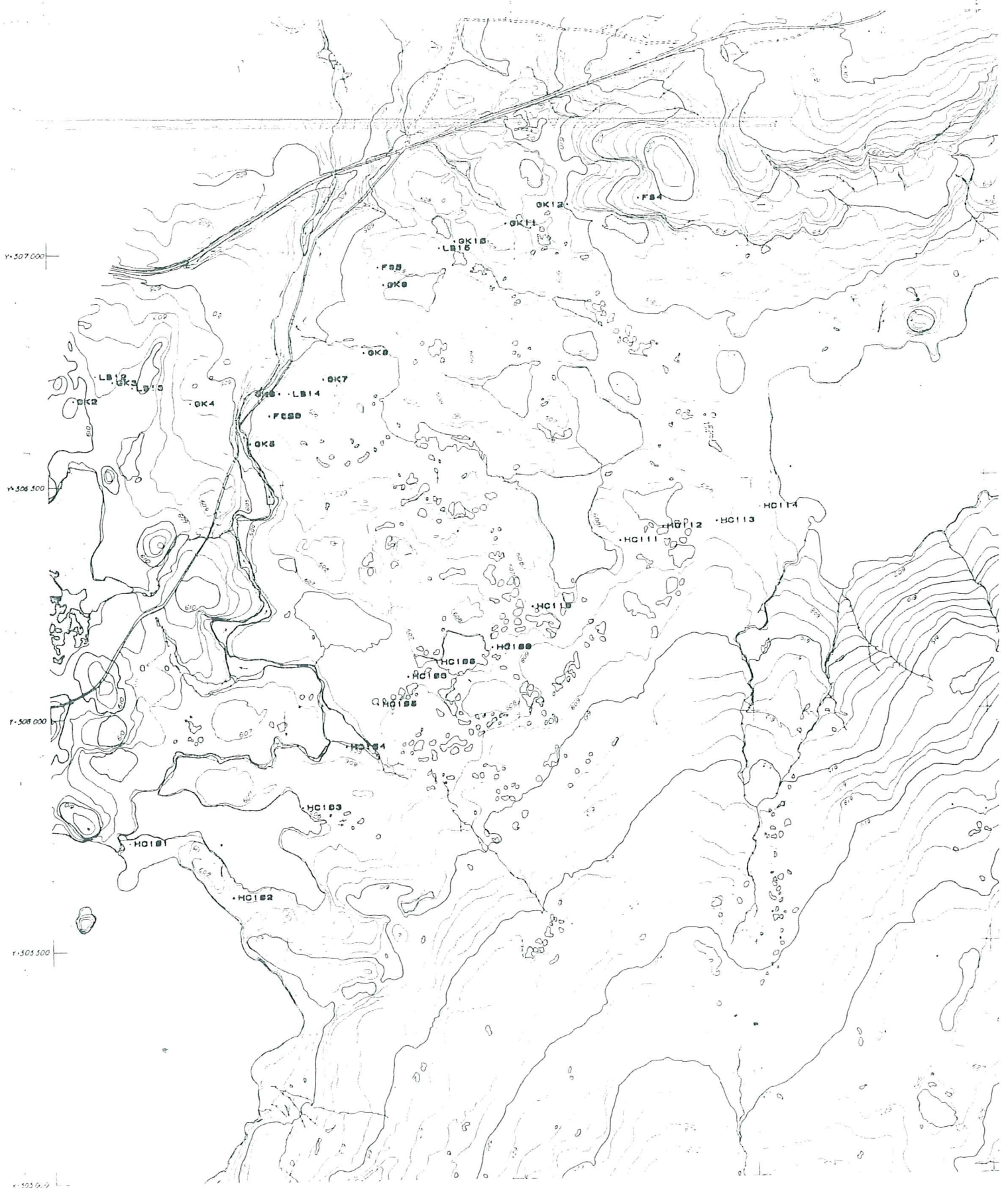
Kortblöð Orkustofnunar eru of stór til að komast fyrir í teikningarum, en hálft blá kemst fyrir með sóðu móti. Punktarnir voru teiknaðir á kort í mælikvarða 1:5000 þar sem þau voru til, en ella var notast við kort í mælikvarða 1:20000. Teikningarnar hafa skrásetningsarnúmer frá 81.02.0091/01 til 81.02.0091/26. Þær eru númeraðar frá norðri til suðurs.



ORKUSTOFNUN Landmælingar	
1:20000	2250
5-2,5m	
Maði 05.1971-74	Teknið 1. októbr 1975
Hitakerfi: Landsnet	Hitakerfi: Landsnet



VOD-LM-760 GTH
 81.02.0091/01
 STAÐSETNINGARKORT FLJÓTSDALSHÉIÐI 1:800



ORKUSTOFNUN Landmælingar		
1:5000	2250	22
1m	Valbjófsstaður	
Mælt: OS 1979	Myndmælt FORVERK 1980	
Mníkerfi: Landsnet	Hárakerfi: OS NA-land	

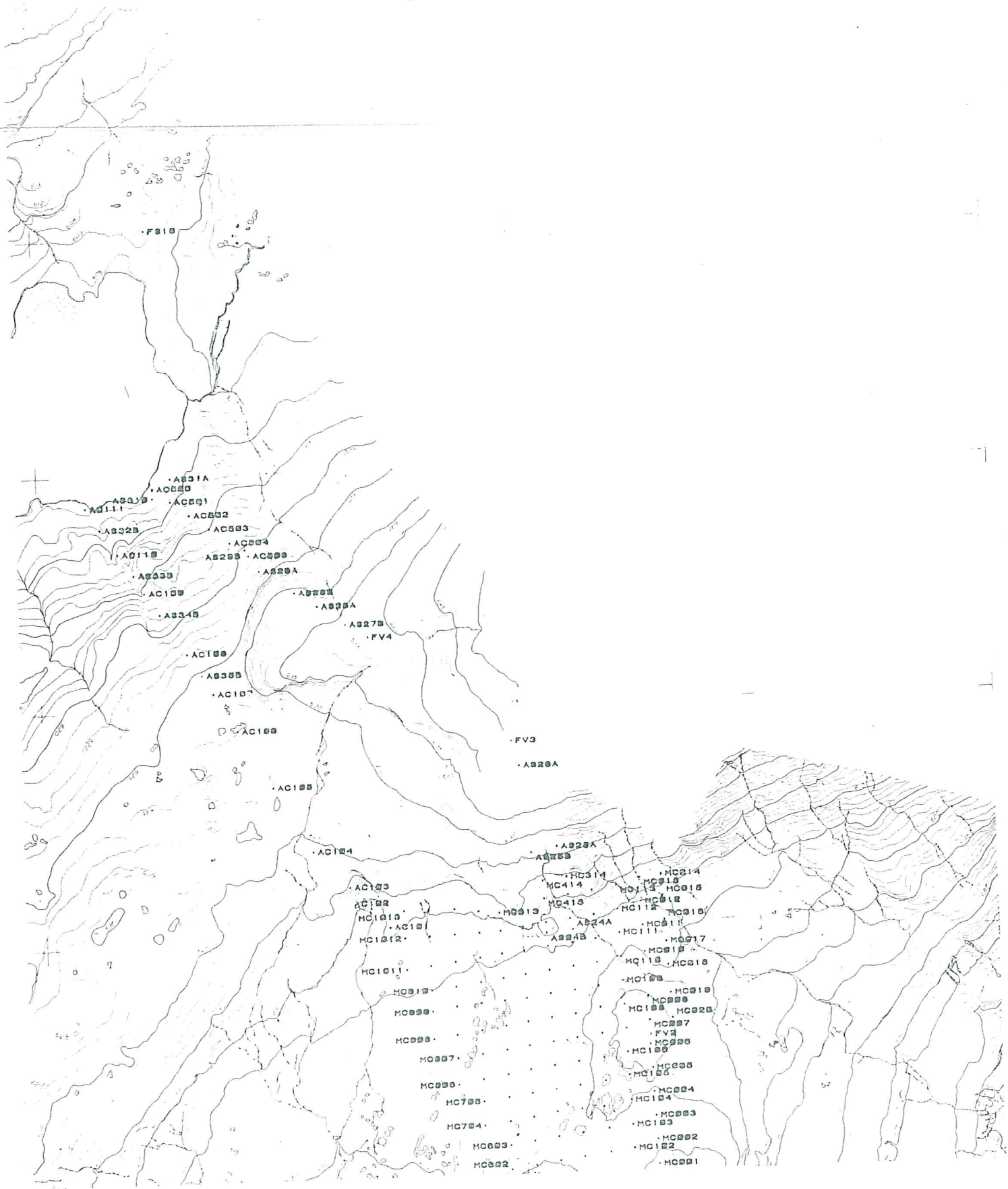
2251			
33	23	13	03
32	22	12	02
31	21	11	01
30	20	10	00
2249			

FORVERK H.F.
 myndmælt kort d.nr.418.
 Myndþrífyrningamælt í W-A7 og
 myndmælt í W-B8 1980.
 Myndmælikvarði 1:13.000.
 Myndir teknar á vegum
 Landmæl. Ísl.18.8.1976.
 Myndavél Wild RC 10 c:152,10



1:50

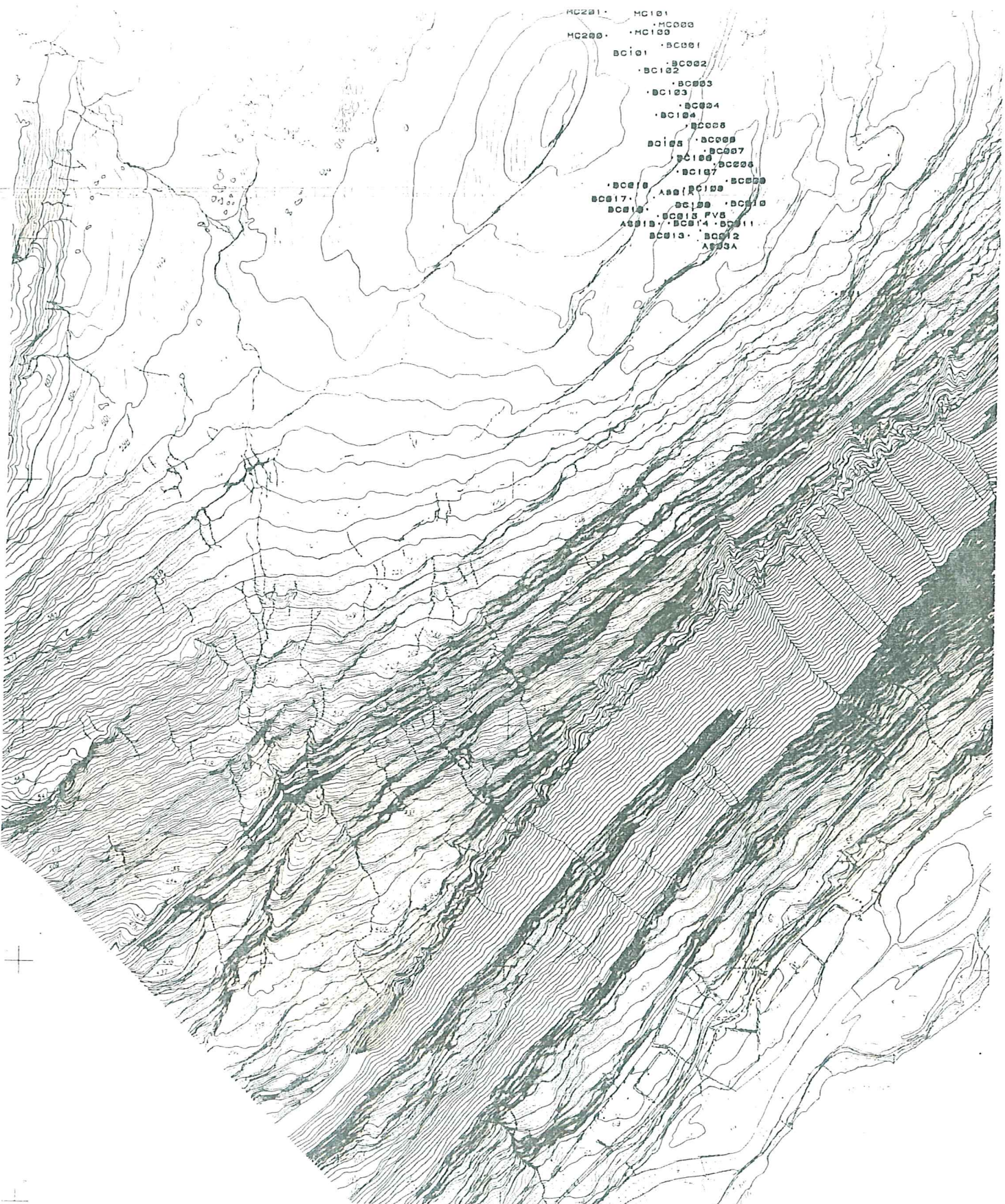
VOD-LM-760 GTH
 81.02.0091/02
 STADSETNINGARKORT FLJÓTSDALSHÉIÐI 1980



1:5000
 0 100 200 300 400 500

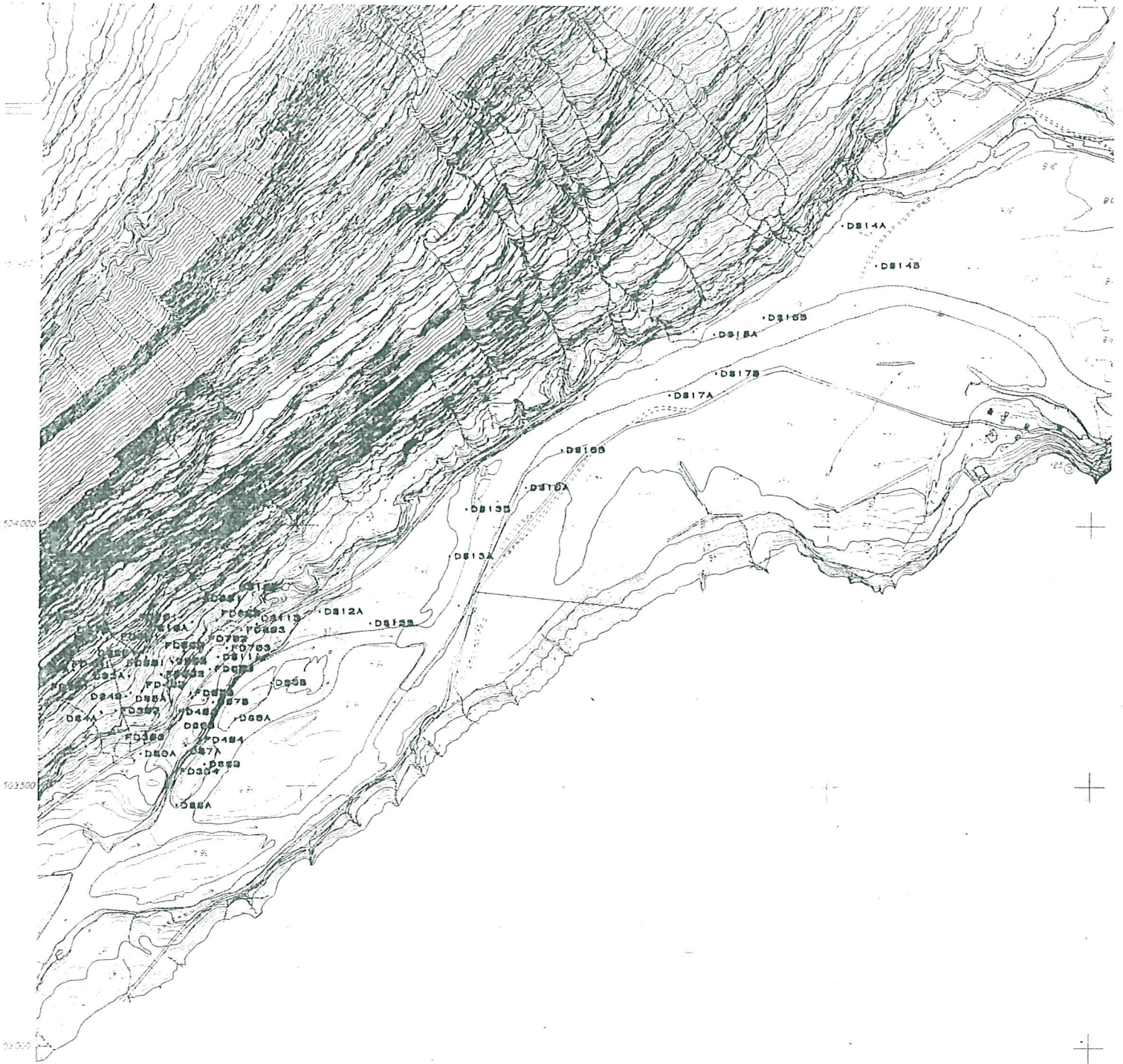
VOD-LM-760 GTH
 81.02.0091/03
 STADSETNINGARKORT FLJOTSDALSHEIDI 1980

HC201 • HC101
• HC000
• HC100
HC200 • BC001
• BC002
• BC102
• BC003
• BC104
• BC006
BC105 • BC008
• BC007
• BC106 • BC009
• BC107 • BC010
• BC010 • BC108 • BC011
BC017 • BC109 • BC010
BC010 • BC110
• BC015 FV8
AS010 • BC014 • BC011
BC013 • BC012
AS01A



1:5000
200 300 400 500

 VOD-LM-760 GTH
81.02.0091/04
STADSETNINGARKORT FLJØTSDALSHEIDI 1980



ORKUSTOFNUN		Landmælingar	
1:5000	2250	II	
1m	Valþjófsstaður		
Mælt. OS 1979	Myndmalt FORVERK 1980		
Hnitkerfi: Landsnet	Handkerfi: OS, NA, Innd		

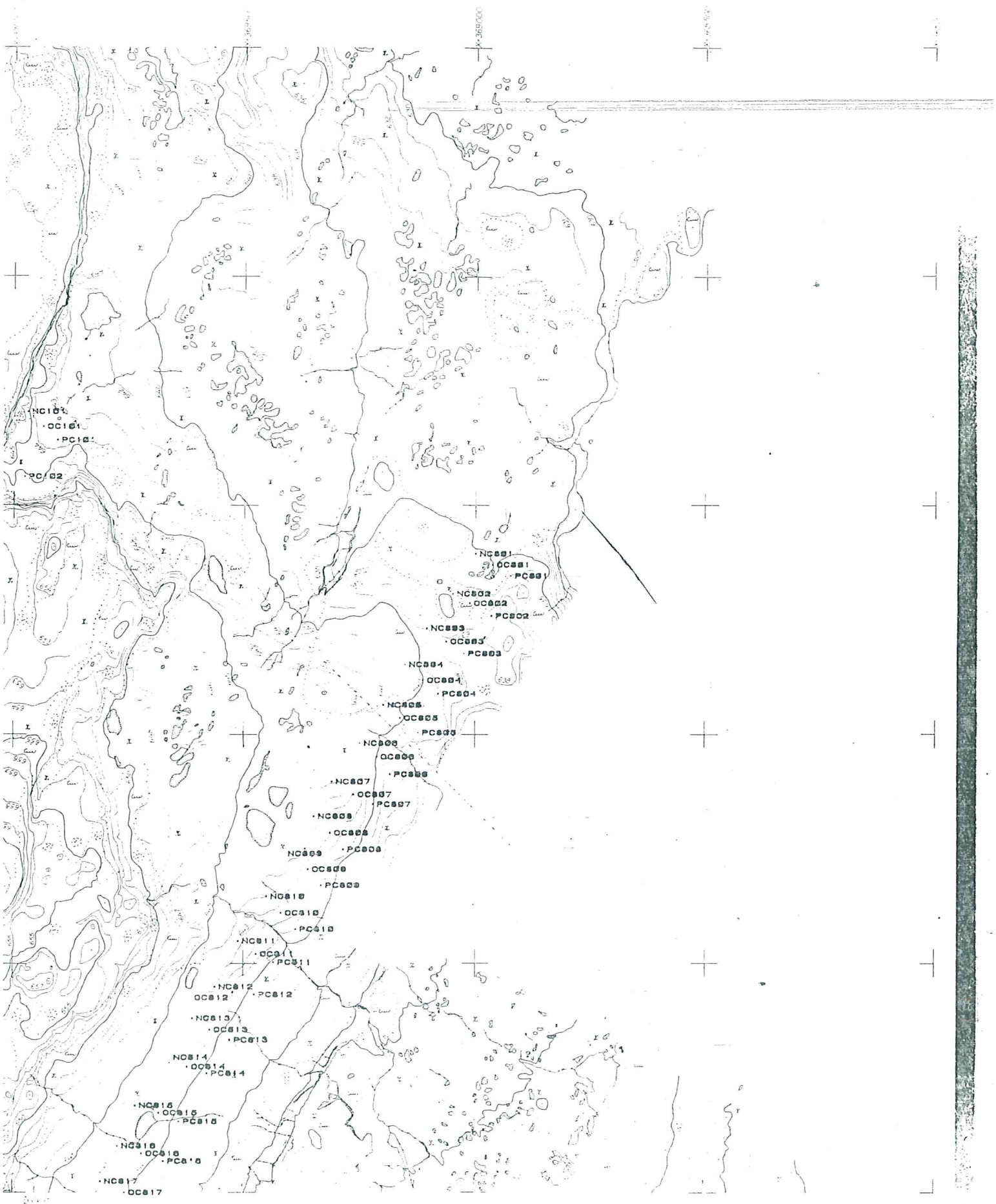
	2251				
	33	23	13	03	
	32	22	12	02	
2150	31	21	11	01	2150
	30	20	10	00	
	2249				

FORVERK H.F.
 myndmalt kort d.nr.418.
 Myndþríhyrningamalt í W-A7 og
 myndmalt í W-B8 1980.
 Myndmálkvarði 1:13.000.
 Myndir teknar á vequm
 Landmæl. Ísl.18.8.1978.
 Myndavél Wild RC 10 ca.1978.

1:500
 100 50 0 100 200

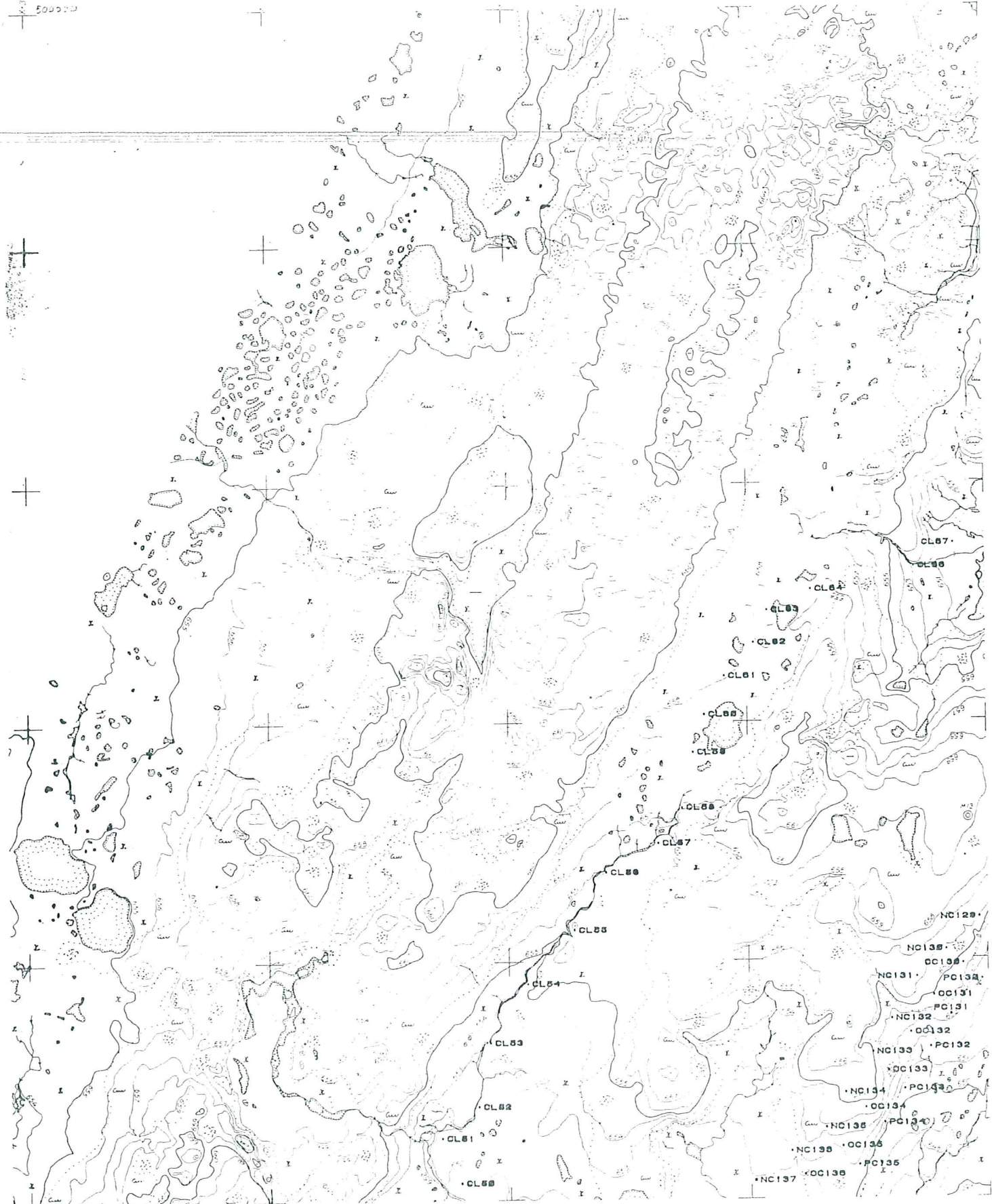
VOD-LM-760 GTH
 81.02.0091/05

REKSEFTINGARKORT FLJÓSDALSHEIDI '880



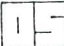
5000
200 300 400 500

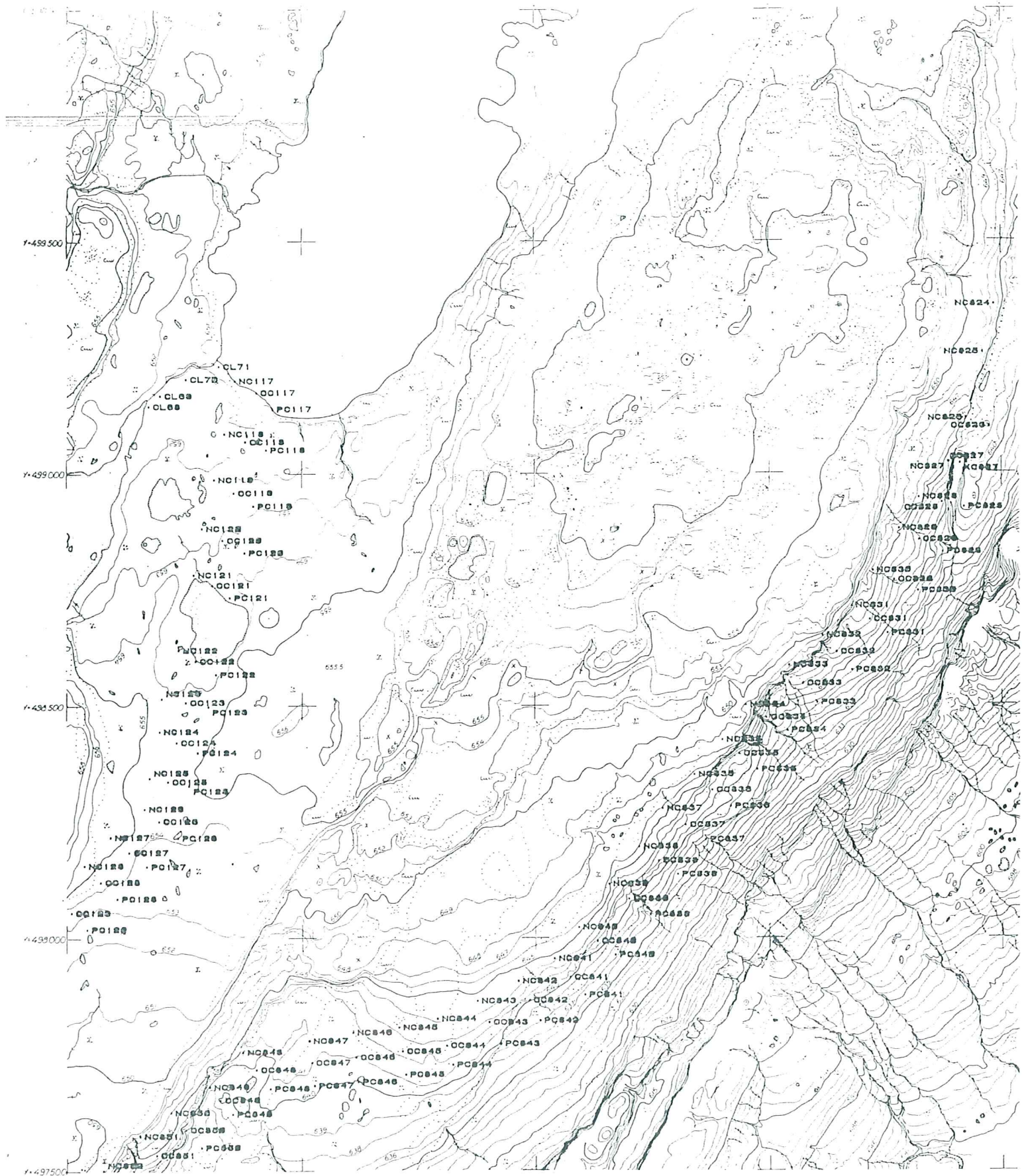
500000



497500

1:5000
0 100 200 300 400 500


 VOD-LM-760 GTH
 81.02.0091/08
 STADSETNINGARKORT FLJOTSDALSHEDEN 1990




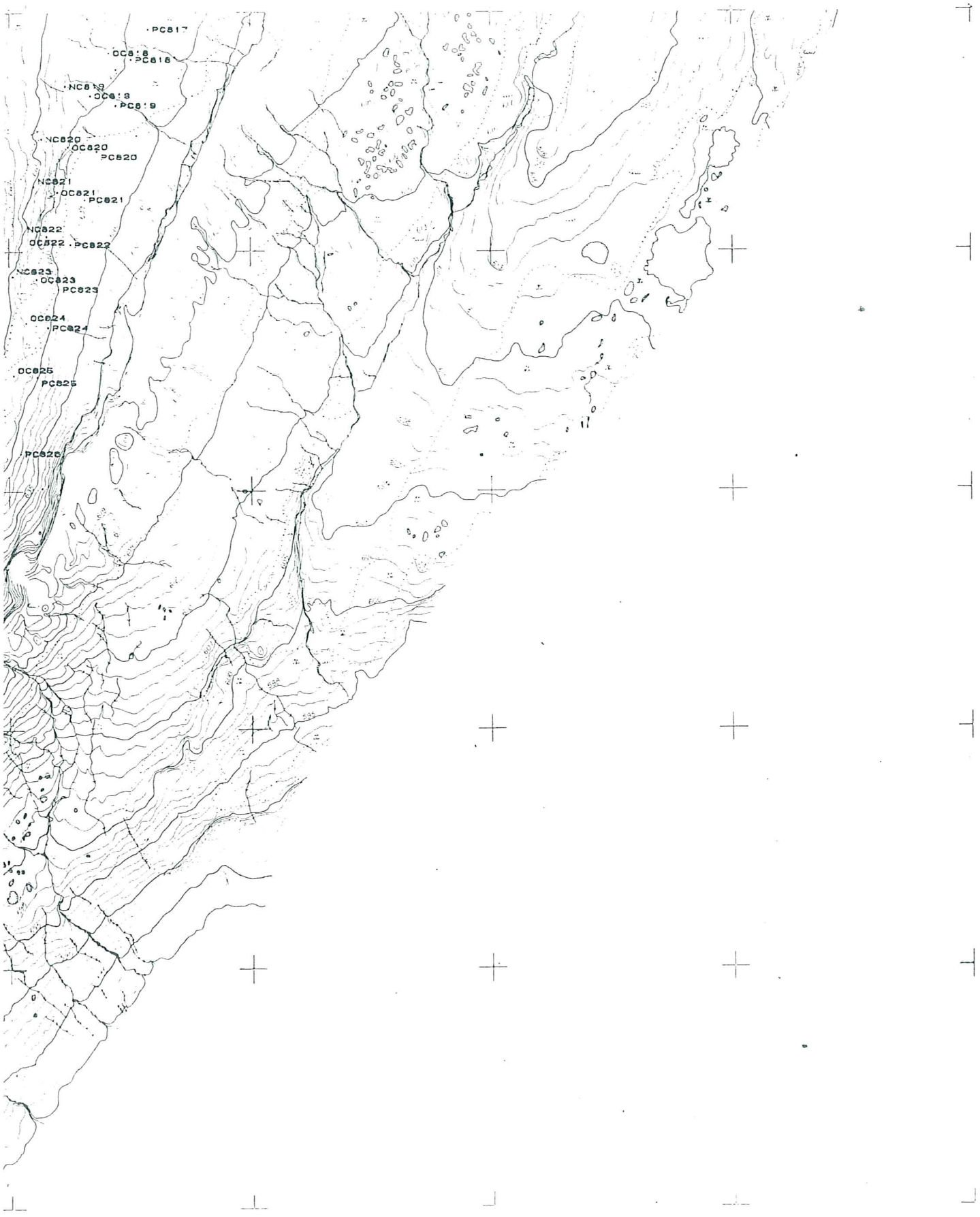
ORKUSTOFNUN Landmælingar		
1:5000	2349	03
1m	Þrælaháls	
Máli: OS 1979	Myndmælt: FORVERK 1980	
Hnitkerfi: Landsnet	Heðakerfi: OS NA-land	

	2350				
	33	23	13	03	
	32	22	12	02	
2449	31	21	11	01	2349
	30	20	10	00	
	2348				

FORVERK H.F.
 myndmælt kort d.nr.418.
 Myndþríhyrningamælt í W-A7 og
 myndmælt í W-B8 1980.
 Myndmælikvarði 1:13.000.
 Myndir teknar á vegum
 Landmæl. Ísl.18.8.1976.
 Myndavél Wild RC 10 c=152,10

1:500
 100 50 0 50 100 200

 VOD-LM-760 GTH
 81.02.0091/09
 STADSETNINGARKORT FLJÓTSDALSHÉIÐI 1880



5000
0 200 400 600

Y:497000
Y:496500
Y:496000
Y:495500



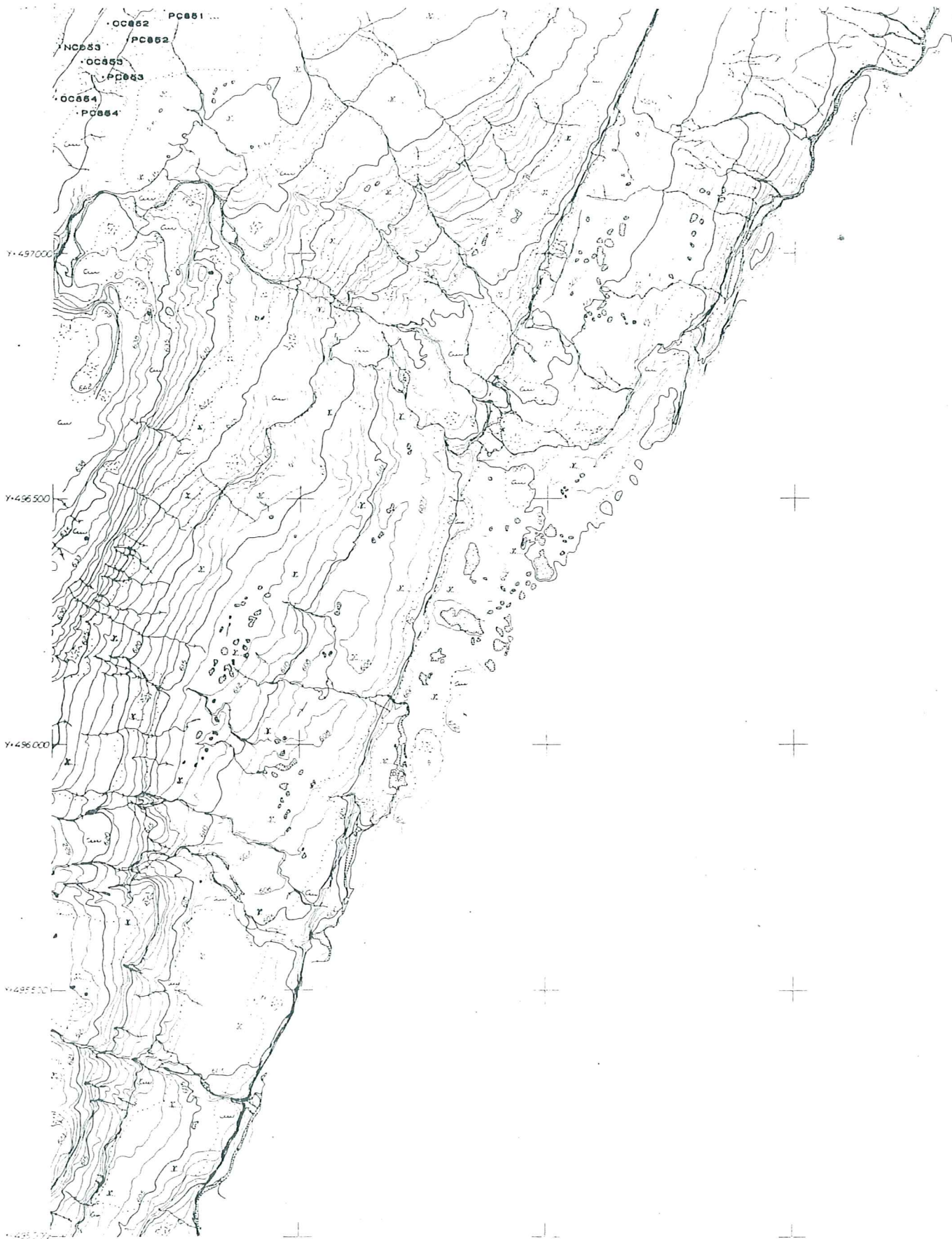
ORKUSTOFNUN Landmælingar		
1:5000	2349	12
1m	Þrælshóls	
Mælt: OS 1979	Myndmælt: FORVERK 1980	
Hnitkerfi: Landsnet	Hæðakerfi: OS NA-land	

	2350				
	33	23	13	03	
2449	32	22	12	02	2249
	31	21	11	01	
	30	20	10	00	
	2348				

FORVERK H.F.
 myndmælt kort d.nr.418.
 Myndþríhyrningamælt í W-A7 og
 myndmælt í W-B8 1980.
 Myndmælikvarði 1:13.000.
 Myndir teknar á vegum
 Landmæl. Ísl.18.8.1976.
 Myndavél Wild RC 10 c=152,10

1:500

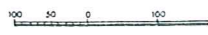
VOD-LM-760 GTH
 81.02.0091/11
 STADSETNINGARKORT FLJÓTSDALSHÉIDI 1980



ORKUSTOFNUN		Landmælingar	
1:5000	2349	02	
1m	Þreilahóls		
Mælt: OS 1979	Myndmælt: FORVERK 1980		
Hnitkerfi: Landsnet		Hæðakerfi: OS NA-land	

2350			
33	23	13	03
32	22	12	02
31	21	11	01
30	20	10	00
2348			

FORVERK H.F.
 myndmælt kort d.nr.418.
 Myndþríhyrningamælt í W-A7 og
 myndmælt í W-B8 1980.
 Myndmælikvarói 1:13.000.
 Myndir teknar á vegum
 Landmæl. Ísl. 18.8.1976.
 Myndavél Wild RC 10 c:152,10



VOD-LM-760 GT
 81.02.0091/13
 STADSETHINGARKORT FLJÓTSDALSHÉIDI 18

Y:455 000

Y:484 500

Y:494 000

Y:493 500

Y:493 000

Y:492 500

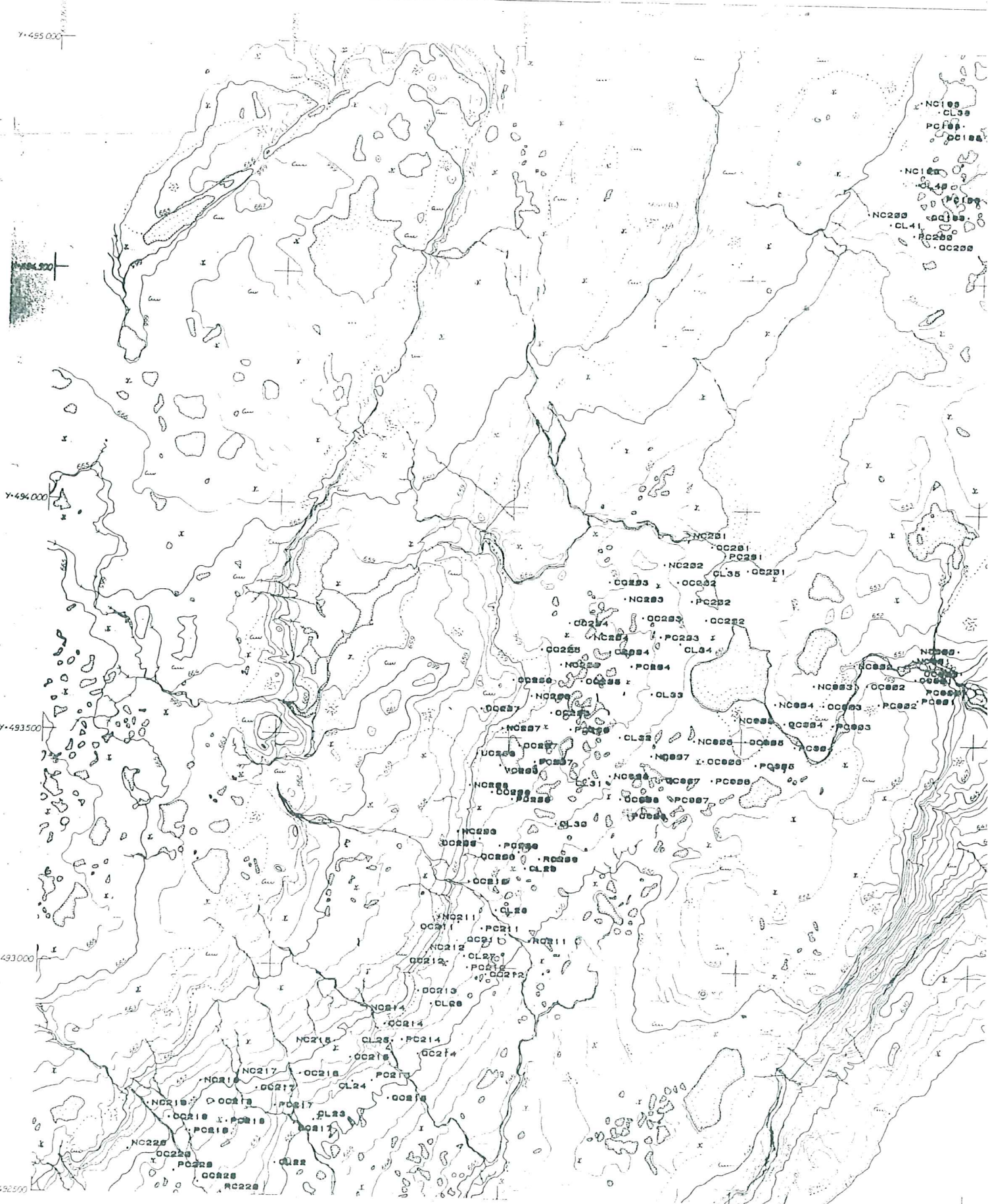
ORKUSTOFNUN Landmælingar		
1:5000	2349	11
1m	brælahóls	
Mælt: OS 1979	Myndmælt: FORVERK 1980	
Hnitkerfi: Landsnet	Hæðakerfi: OS NA-land	

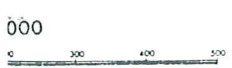
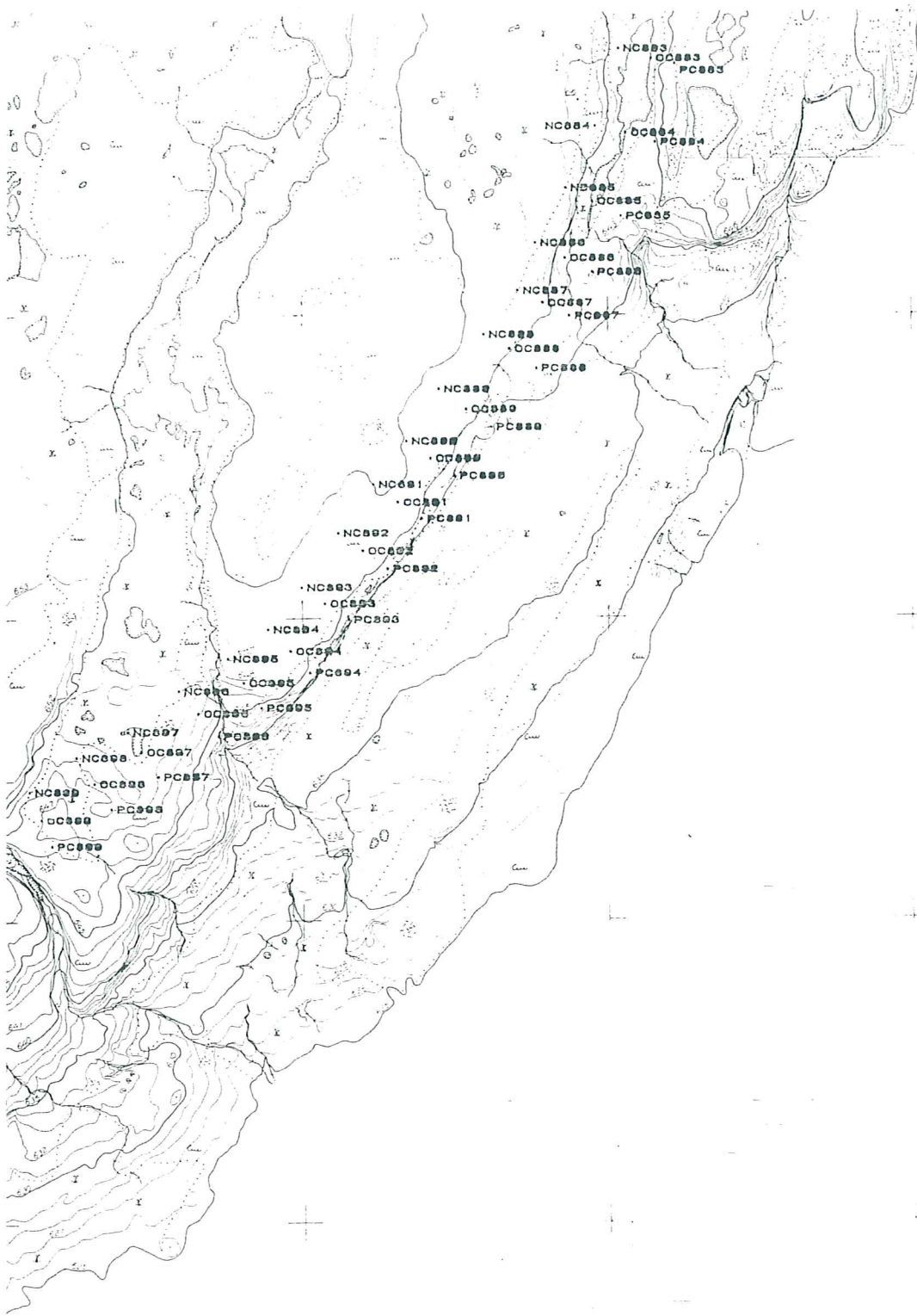
	2350			
	33	23	13	03
	32	22	12	02
2449	31	21	11	01
	30	20	10	00
	2348			

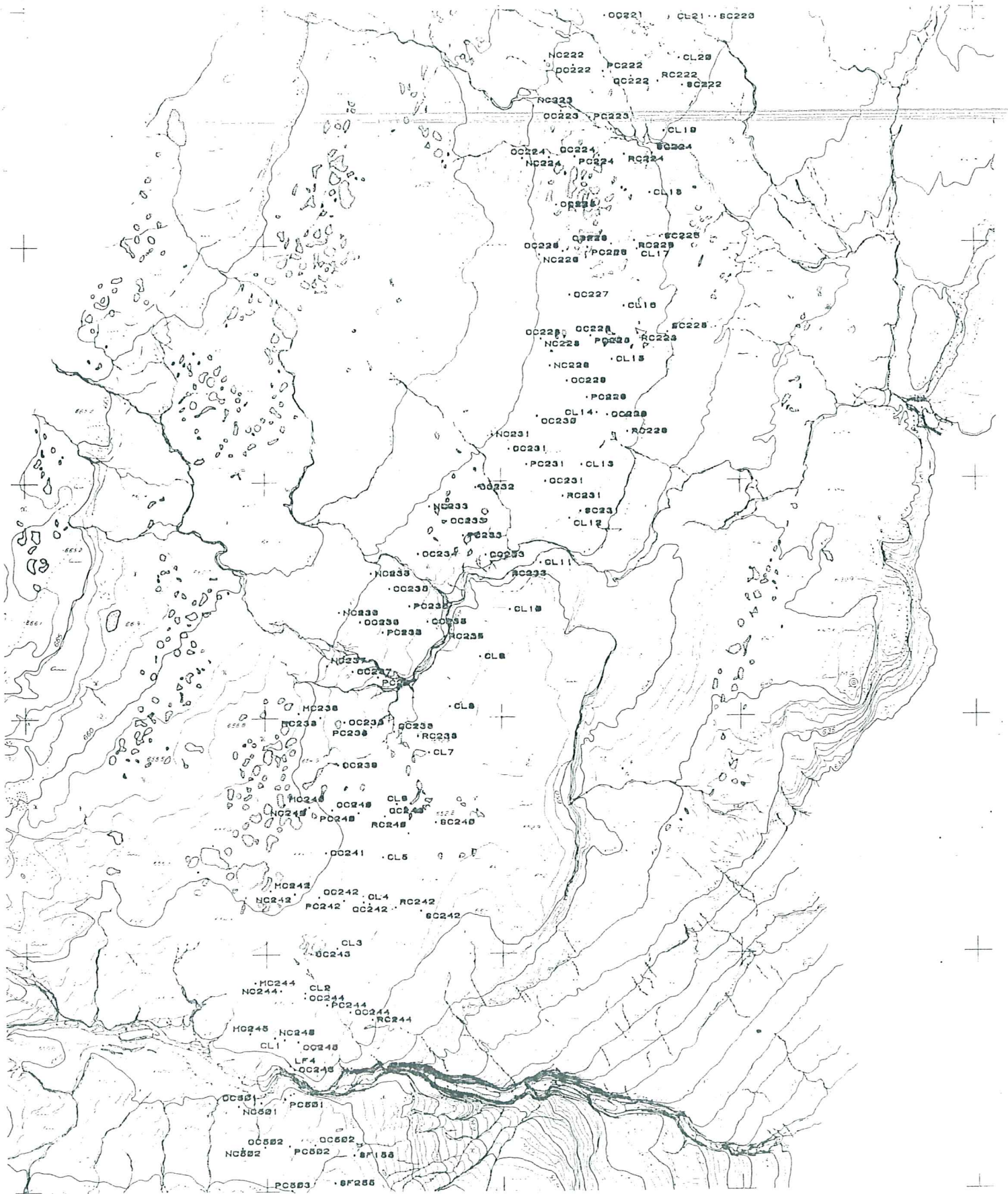
FORVERK H.P.
 myndmælt kort d.nr.418.
 Myndþríhyrningamælt í W-A7 og
 myndmælt í W-B8 1980.
 Myndmælikvæði 1:13.000.
 Myndir teknar á vegun
 Landmæl. Ísl.18.8.1976.
 Myndavélf Wild RC 10 c:152,10

1:5001
 100 50 0 100 200

VOD-LM-760 GTH
 81.02.0091/14
 STADSETNINGARKORT FLJÓTSDALSHÉIDI 1980







FORVERK H.F.
 myndmelt kort d.nr.418.
 Myndprihyrningarmelt í W-A7 og
 myndmelt í W-B8 1980.
 Myndmælikvarói 1:13.000.
 Myndir teknar á vegum
 Landmæl. Ísl.18.8.1976.
 Myndavél Wild RC 10 c=152,10

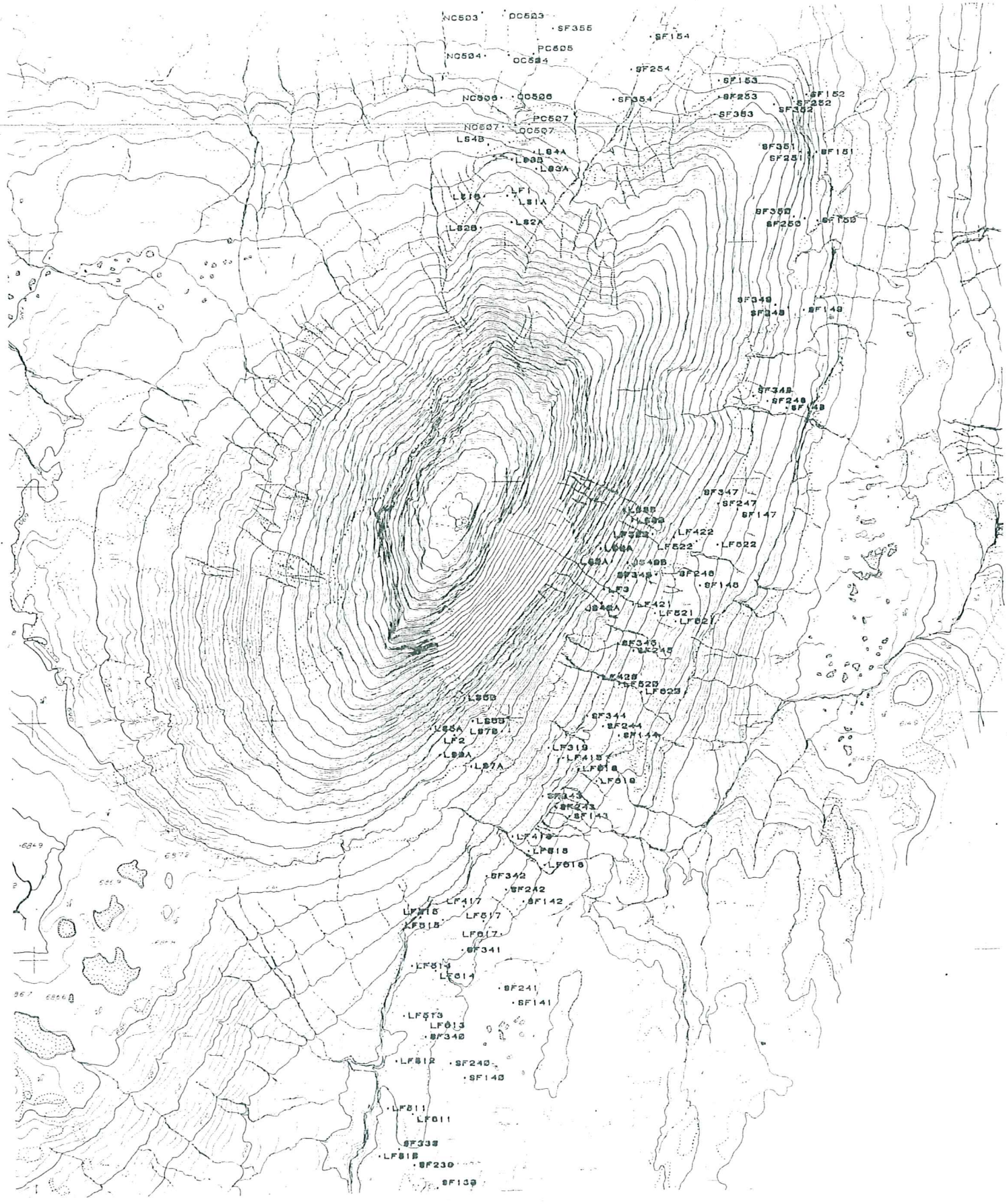
1:5000



03	2249
02	
01	
00	

 VOD-LM-760 GTH
 81.02.0091/16

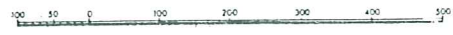
STADSETNINGARKORT FLJÓTSDALSHÉIÐI 1980




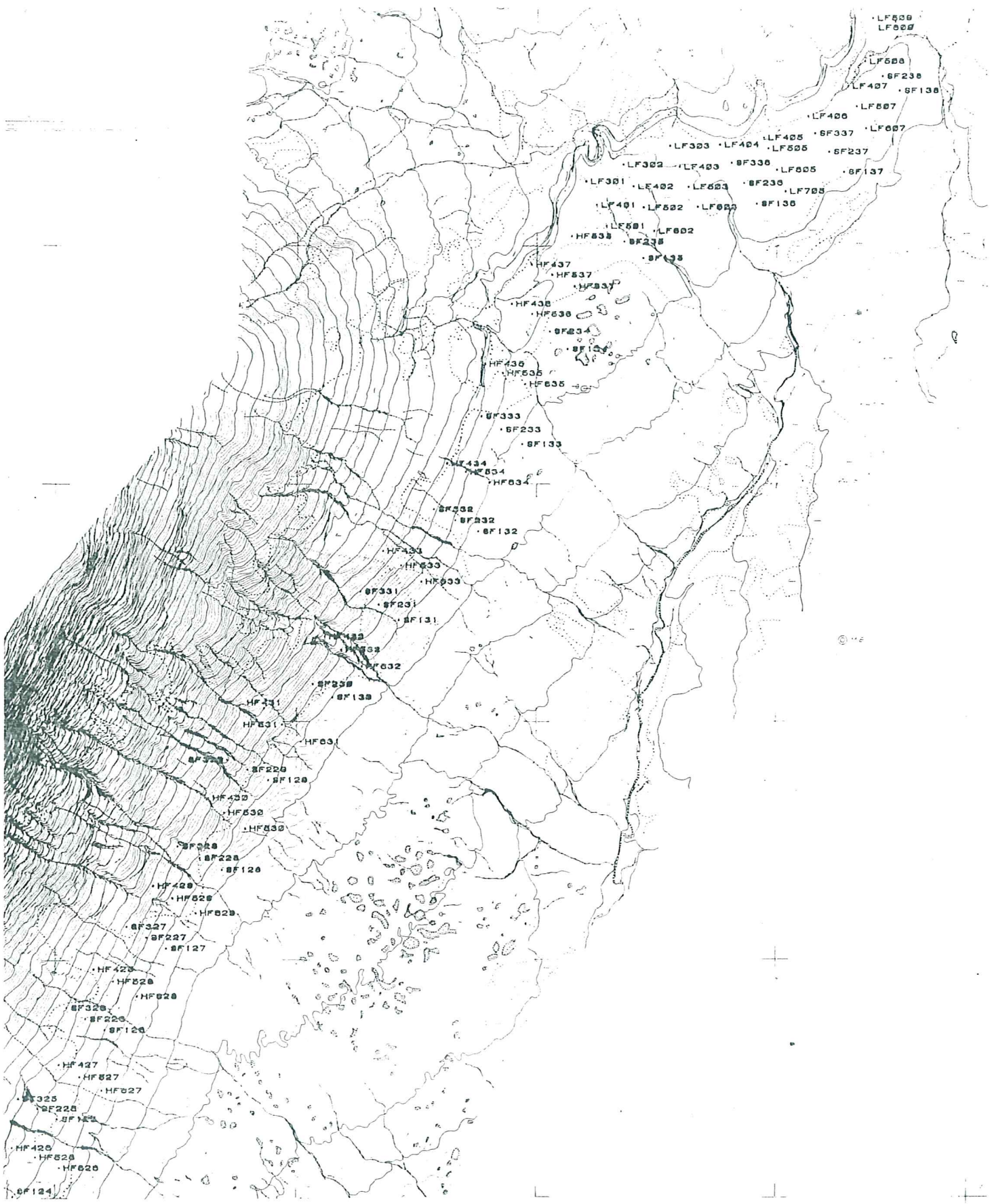
03	2248
02	
01	
00	

FORVERK H.F.
 myndmalt kort d.nr.418.
 Myndprihyrningamalt í W-A7 og
 myndmalt í W-B8 1980.
 Myndmælikvarði 1:13.000.
 Myndir teknar á vegum
 Landmæl. Ísl.18.8.1976.
 Myndavél Wild RC 10 c=152,10

1:5000

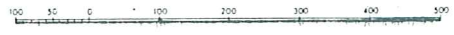


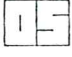

 VOD-LM-760 GTH
 81.02.0091/17
 STADSETNINGARKORT FLJOTSÐALSHEIDI 1980

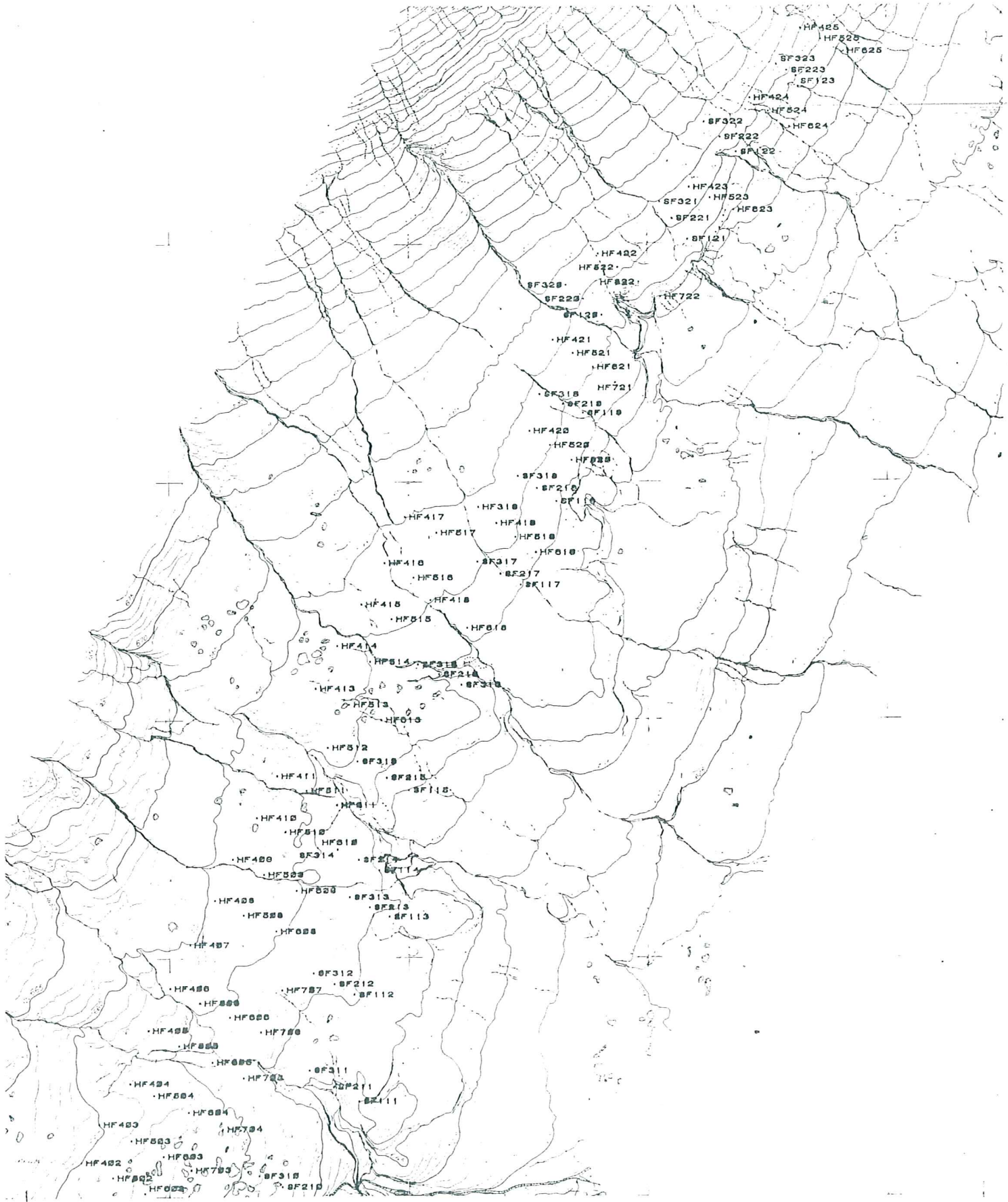


418.
 I M-A7 og
 1980.
 .000.
 um
 1976.
 c=152,10

1:5000



 VOD-LM-760 GTH
 81.02.0091/18
 STADSETNINGARKORT FLJOTSDALSHEDID! 1980

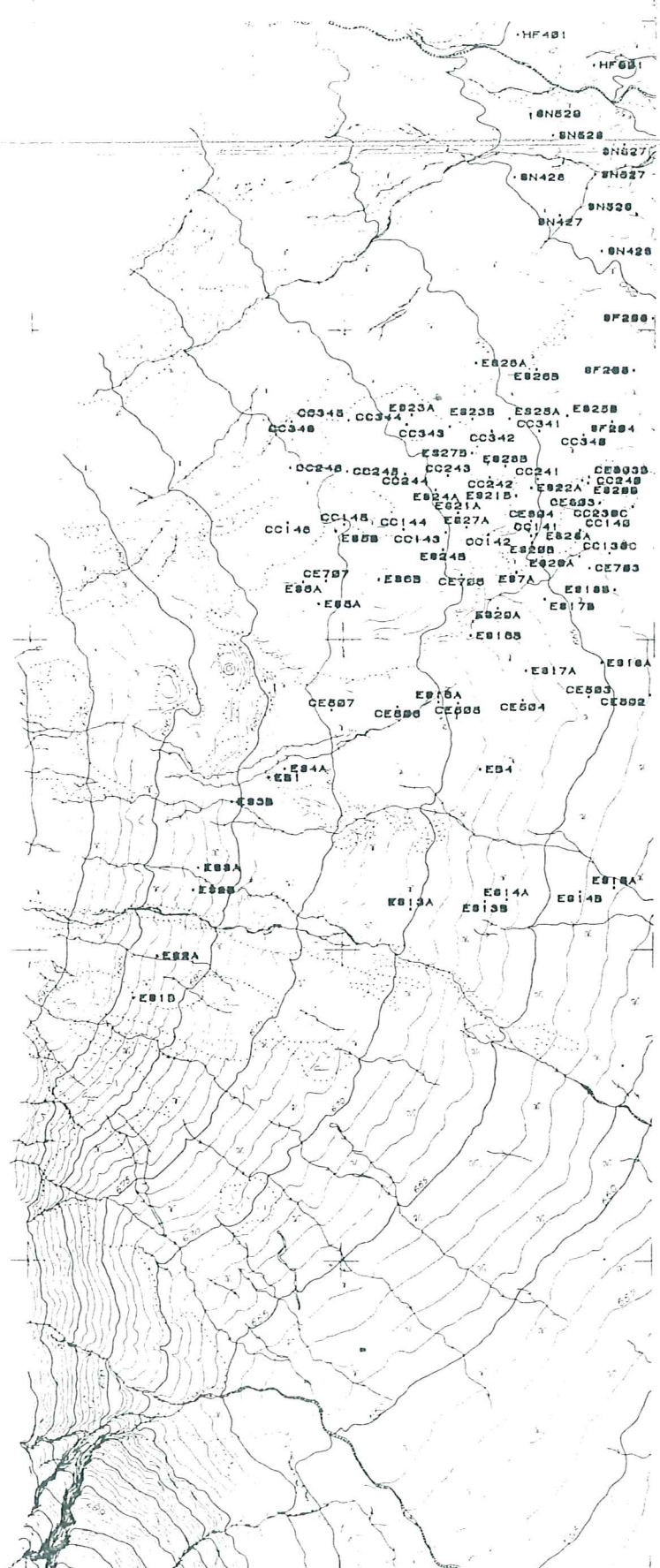


2349			
33	23	13	03
32	22	12	02
31	21	11	01
30	20	10	00
2347			

FORVERK H.F.
 myndmalt kort d.nr.418.
 Myndprihyrningamalt í W-A7 og
 myndmalt í W-B8 1980.
 Myndmalikvarói 1:13.000.
 Myndir teknar á vegum
 Landmæl. Ísl.18.8.1976.
 Myndavél Wild RC 10 c:152,10

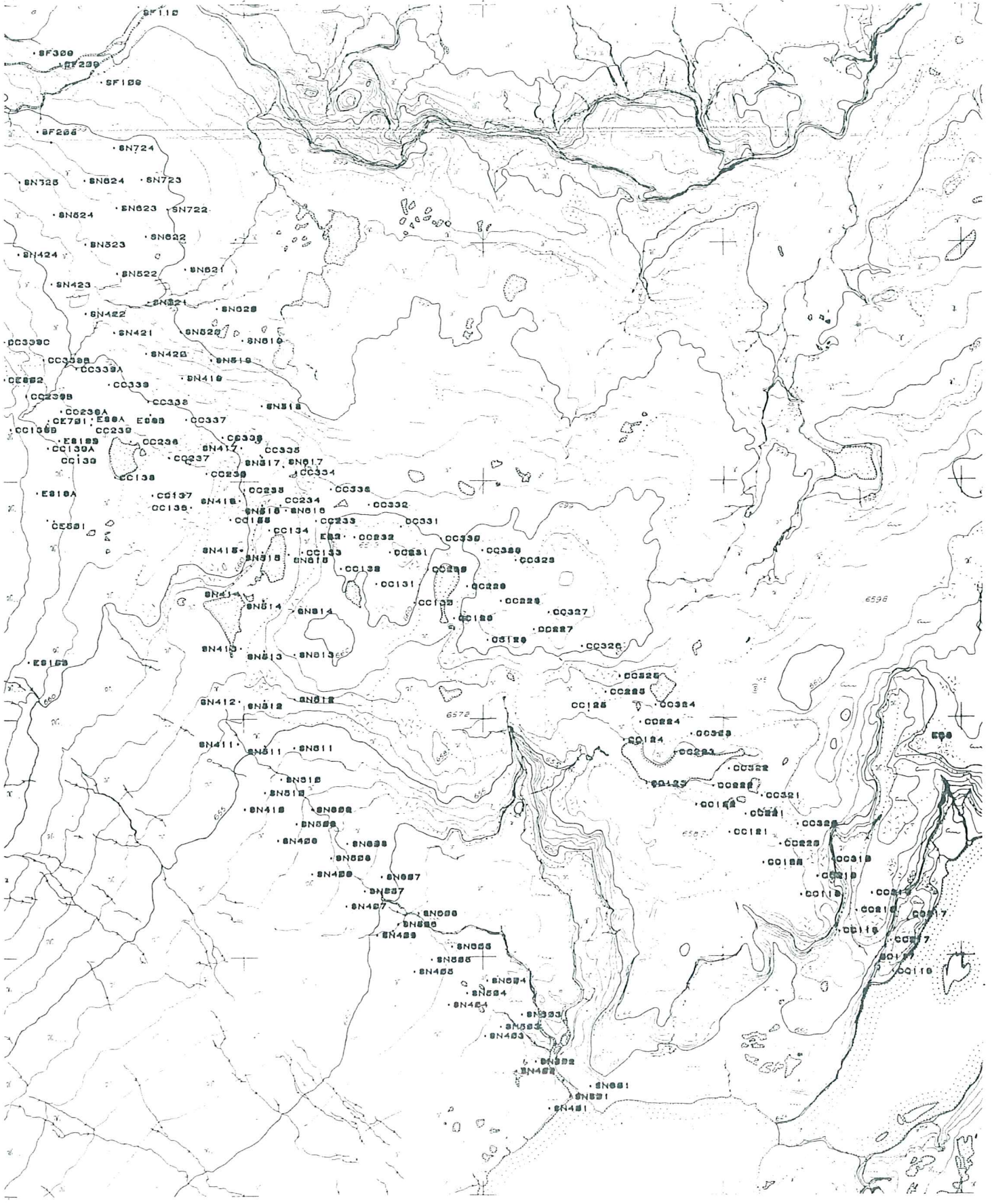


VOD-LM-760 GTH
 81.02.0091/19
 STADSETNINGARKORT FLJOTSÐALSHEIDI 1980



1:5000





ORKUSTOFNUN Landmælingar		
1:5000	2348	20
1m	Hafursá	
Mælt: OS 1979	Myndmælt: FORVERK 1980	
Mnakerfi: Landsnet	Hæðakerfi: OS NA-land	

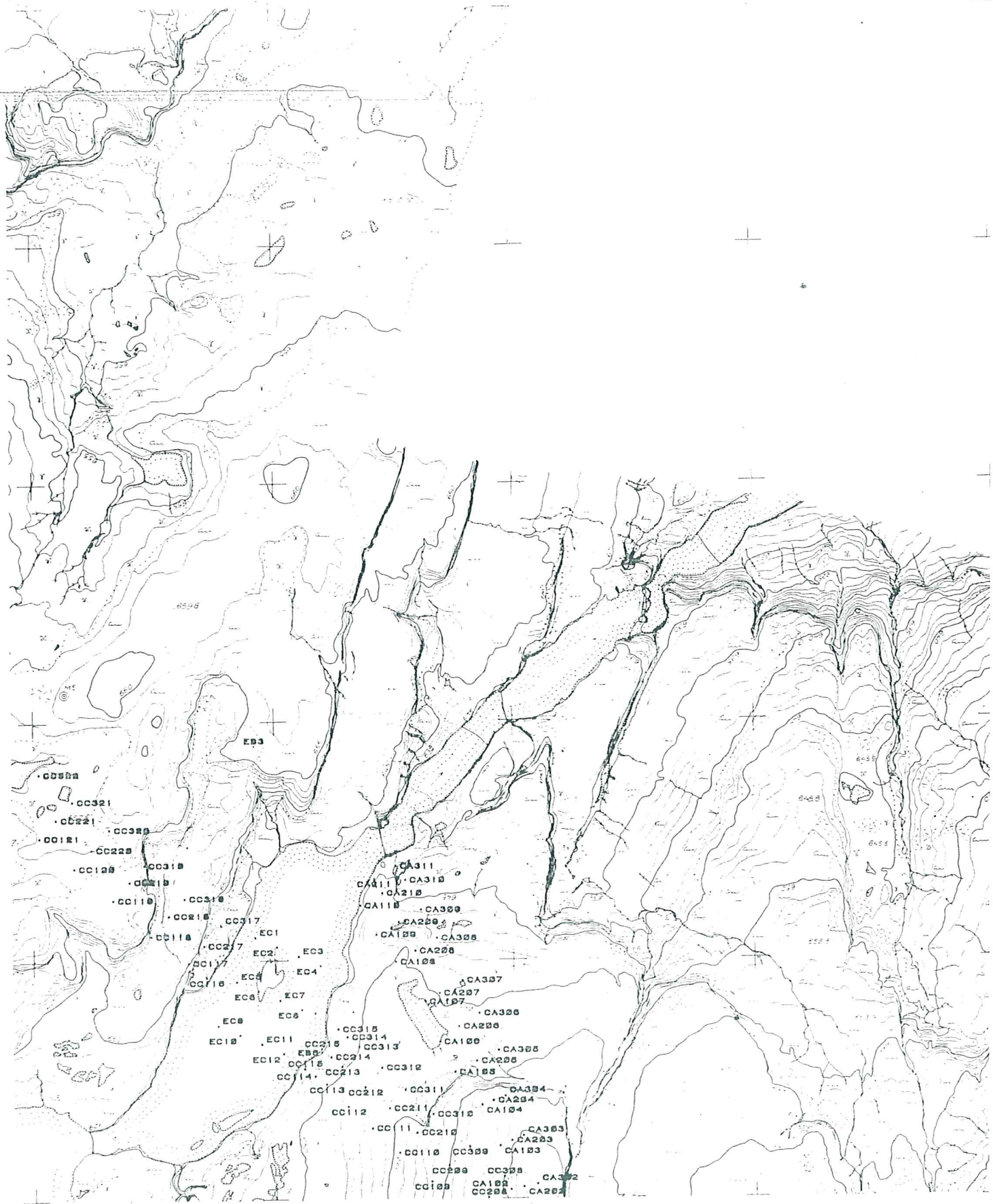
2349			
33	23	13	03
32	22	12	02
31	21	11	01
30	20	10	00
2348			2348
2347			

FORVERK H.F.
 myndmælt kort d.nr.418.
 Myndþrifyrningamælt í W-A7 og
 myndmælt í W-B8 1980.
 Myndmælikvarði 1:13.000.
 Myndir teknar á vegum
 Landmæl. Ísl.18.8.1976.
 Myndavéi Wild RC 10 c:152,10

1:5000

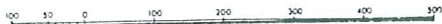
VOD-LM-760 GTH
 81.02.0091/21

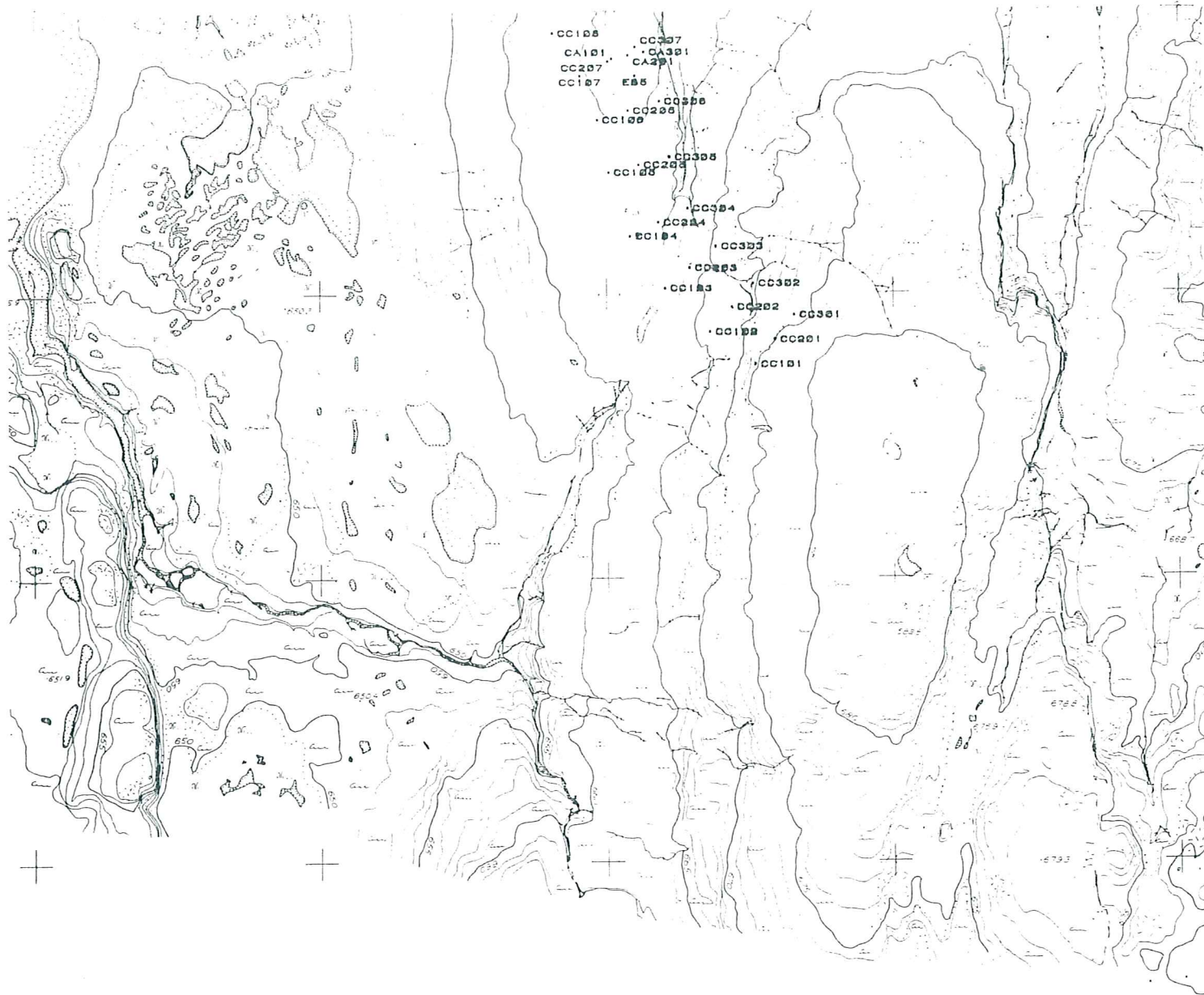
STADSETNINGARKORT FLJÓTSDALSHÉIÐI 1980



1:5000

A7 09





1:5000

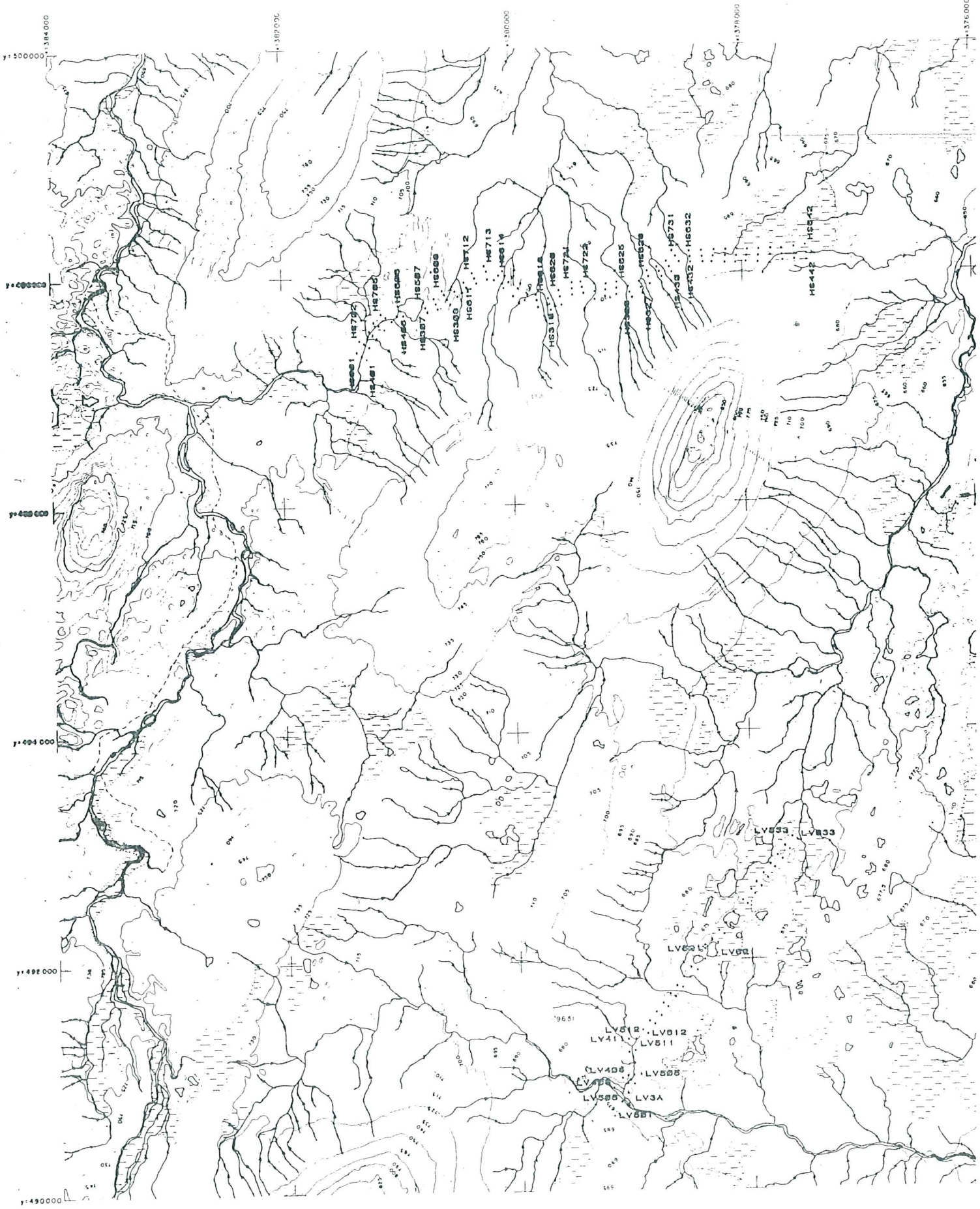


A7 og

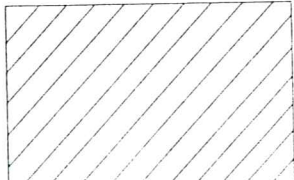
2,10

VOD-LM-760 GTH
81.02.0091/23

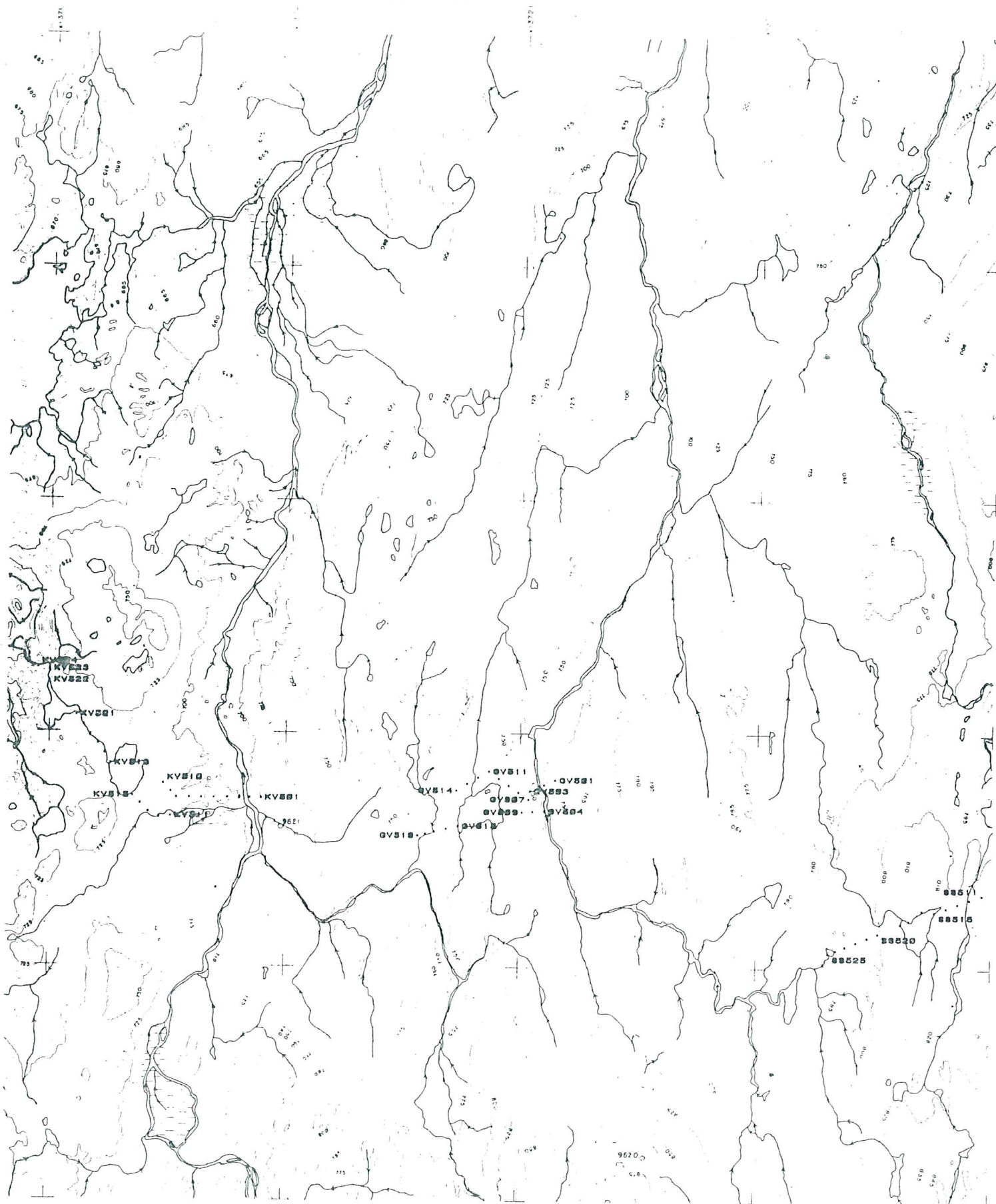
STADSETNINGARKORT FLJOTSÐALSHEID: 1980



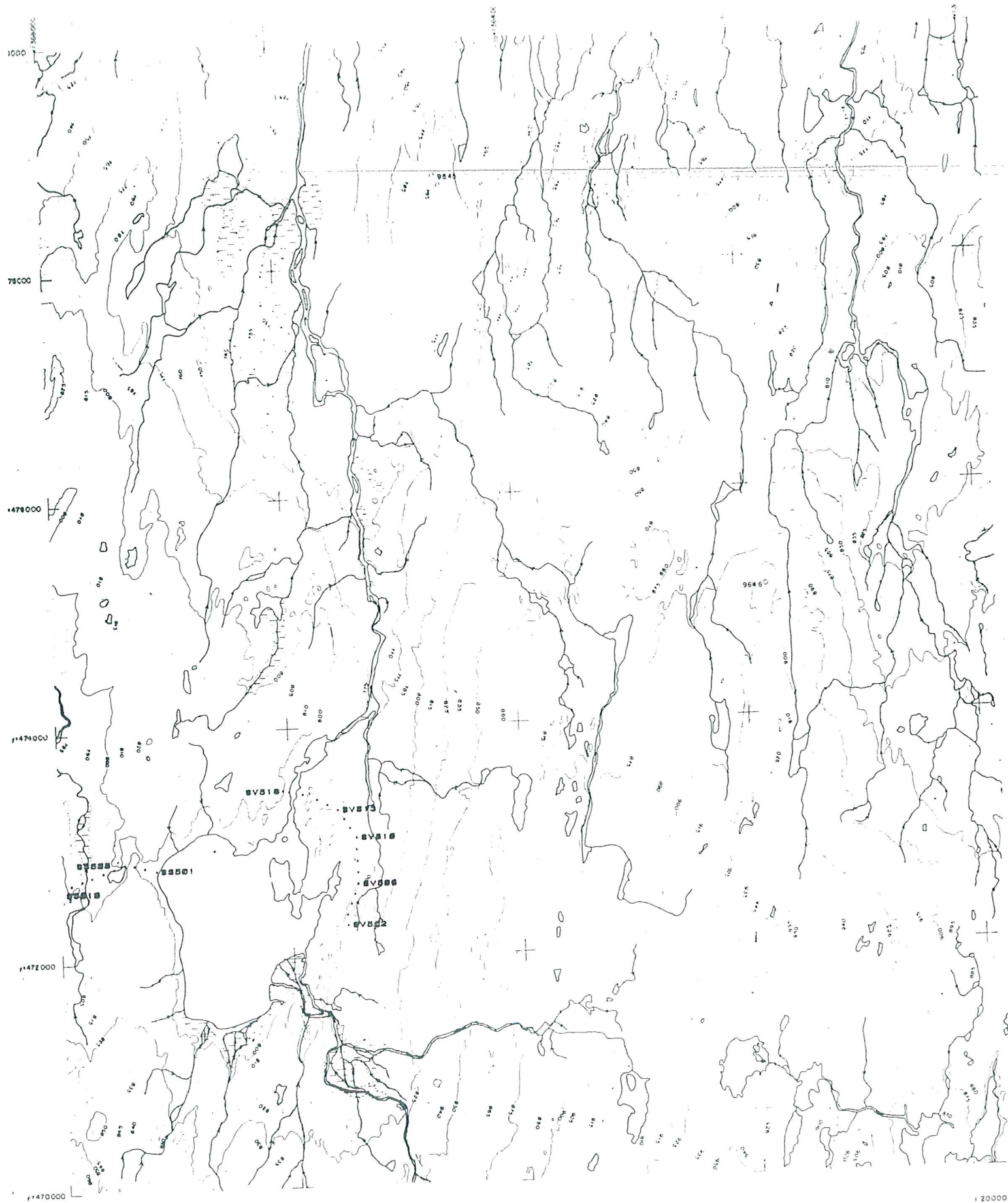
ORKUSTOFNUN Landmælingar	
1:20000	2349
5-2,5m	
Mætt OS 1971-74	Teiknað VÍAK AB 1975
Hnitakerfi Landsnet	-Hæðakerfi OS NA-land



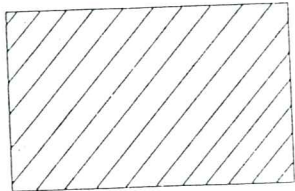
200 0 1
 VOD-LM-760 GT
 81.02.0091/24
 STADSETNINGARKORT FLJOTSÐALSHEIDI II



1 20 000
10 000 2 000



ORKUSTOFNUN Landmælingar	
1:20000	2247
5m	Hraun
Mált OS 1971-74, 75	Teikun, VÍAK AB 1975, 77
Hnitakerfi: Landsnet	Mæðgækerfi: OS Ná-land




 VOD-LM-760 GTH
 81.02.0091/26
 ST-JÖSETNINGARKORT FLJÓTSDALSHÉIÐI 1960

Hnitalisti

Listinn nær yfir kjarnaborholur, loftborholur, sprengisísar og grefjur (sem ekki eru við cobra-borholur), hálur við væntanlegar cobra-borholur, þar sem ekki tókst að bora áður en vetur sekk í garð ('hálur' í fyrirsöðnum, sjá listann hér neðan við), cobra-borholur borðar 1979 og mælistöðvar. (Hér er lítið á mælistöðvarnar sjálfar sem þekktar. Flestar eru þar mældar út frá Prihyrningspunktum með 'Pólmælinsu', en úrvinnsla hennar fer enn fram í tölvu SKYRR).

Listinn greinist sundur í samræmi við eftirfarandi fyrirsæðni:

- Kjarnaborholur
- Loftborholur
- Sprengisísar sunnan Laugarár
- Sprengisísar ofan Teisshús
- Sprengisísar við Teisshús
- Grefjur við Kristínarkil
- Eyjabakkar (hálur)
- Hölnárveita (hálur)
- Sauðárveita (hálur)
- Cobra-borholur 1979
- Stöðvar sunnan Laugarár
- Stövar nordan Laugarár
- Stöðvar við Sauðárveitu

ORKUSTOFNUN
VATNSORKUDEILD
81.02.10 GP

KJARNABORHOLUR

HNITALISTI
Hnitakerfi: Lambert
BLAD 01

X-hnit (m)	Y-hnit (m)	Hzd (m)	Nafn punkts	Ath	Numer punkts
380616.6	481278.6	679.3	EB1		
379289.6	481383.7	661.0	EB2		
378042.5	480948.8	656.6	EB3		
380280.7	481292.5	669.2	EB4		
377449.9	479885.8	666.2	EB5		
377902.4	480307.3	644.8	EB6		
362732.3	507107.1	618.7	FS04		
363293.6	506965.1	607.7	FS05		
363527.4	506648.7	607.1	FS09		
361763.4	507020.2	604.9	FS10		
364271.1	503692.6	609.4	FS11		
365303.4	503428.6	614.9	FS12		
366727.6	504614.4	627.1	FS13		
364494.9	508957.5	625.4	FS14		
360336.2	504404.5	572.5	FV1		
360739.2	505286.9	609.3	FV2		
361016.5	505916.8	644.7	FV3		
361313.6	506145.7	637.8	FV4		
360621.7	504554.8	607.3	FV5		
360145.9	504325.1	497.4	FV6		
359877.8	503781.5	99.2	FV7		
359980.0	503931.1	183.3	FV8		
376493.9	489604.3	700.6	LF1		
376615.3	488464.5	701.3	LF2		
376297.8	488769.1	682.2	LF3		
376451.3	490264.5	649.7	LF4		

ORKUSTOFNUN
VATNSORKUDEILD
81.02.10 GP

LOFTBORHOLUR

HNITALISTI
Hnitakerfi: Lambert
BLAD 02

X-hnit (m)	Y-hnit (m)	Hzd (m)	Nafn Punkts	Ath	Numer Punkts
368694.9	501164.5	630.5	LB1		
368163.3	501388.9	631.0	LB2		
367891.2	501758.4	634.2	LB3		
367498.5	502380.9	634.4	LB4		
367353.8	502872.6	631.8	LB5		
367240.3	503127.0	634.6	LB6		
366874.1	503788.1	630.7	LB7		
366888.2	504028.9	631.5	LB8		
366704.8	504316.7	631.3	LB9		
366664.6	504480.2	627.4	LB10		
364019.0	506696.4	612.3	LB11		
363898.1	506736.7	609.0	LB12		
363819.3	506713.0	609.4	LB13		
363485.3	506695.6	607.7	LB14		
363160.9	507004.2	607.4	LB15		
364932.0	503484.9	611.5	LB31		
364731.1	503550.8	610.4	LB32		
364520.1	503604.6	610.8	LB33		
364361.7	503656.0	610.2	LB34		
364169.1	503706.2	607.7	LB35		
364010.6	503794.0	608.2	LB36		
363854.1	503894.6	609.8	LB37		
363667.4	503997.7	612.1	LB38		
366690.4	504822.7	628.7	LB41		
366557.3	505068.3	629.5	LB42		
366373.1	505400.4	629.7	LB43		
366245.3	505651.9	632.7	LB44		
366046.8	505949.0	633.3	LB45		
365977.9	506168.3	634.3	LB46		
365848.6	506530.9	632.8	LB47		
365807.6	506878.0	632.1	LB48		
365735.2	507182.0	630.0	LB49		
365585.9	507464.2	629.7	LB50		
365366.0	507545.1	627.4	LB51		
365084.3	507844.2	631.6	LB52		
364985.1	507985.5	629.4	LB53		
364744.9	508341.5	629.0	LB54		
364469.3	508519.1	633.0	LB55		
364119.6	508887.7	632.8	LB56		
363956.0	509237.0	626.4	LB57		
364037.4	509418.1	626.3	LB58		
363917.3	509646.9	624.0	LB59		
363794.0	509857.0	627.3	LB60		
363695.0	510102.7	631.3	LB61		
363579.1	510418.9	634.1	LB62		

ORKUSTOFNUN
VATNSORKUDEILD
81.02.10 GP

SPRENGIGIGAR SUNNAN LAUGARAR

HNITALISTI
Hnitakerfi: Lambert
BLAD 03

X-hnit (m)	Y-hnit (m)	Hzd (m)	Nafn punkts	Ath	Numer punkts
380830.7	480923.5	683.8	ES1B		
380794.4	480991.6	683.4	ES2A		
380737.4	481097.6	682.4	ES2B		
380729.0	481133.6	682.5	ES3A		
380675.3	481239.6	680.8	ES3B		
380591.2	481293.2	677.8	ES4A		
380538.1	481558.7	676.0	ES5A		
380511.6	481675.9	676.1	ES5B		
380563.4	481594.0	677.7	ES6A		
380443.7	481599.1	673.6	ES6B		
380224.0	481610.5	665.3	ES7A		
379811.7	481631.7	661.2	ES9A		
379692.1	481640.0	660.5	ES9B		
380391.9	481066.7	670.6	ES13A		
380272.7	481079.4	667.7	ES13B		
380238.3	481082.5	666.9	ES14A		
380119.0	481095.7	664.2	ES14B		
380063.1	481101.9	663.0	ES15A		
379944.2	481120.0	661.5	ES15B		
380347.9	481400.3	670.2	ES16A		
380297.4	481508.1	668.2	ES16B		
380207.8	481451.3	667.1	ES17A		
380178.4	481566.8	665.3	ES17B		
380085.2	481464.1	664.7	ES18A		
380063.9	481582.1	664.0	ES18B		
379926.5	481475.4	662.5	ES19A		
379880.4	481585.7	661.9	ES19B		
380254.2	481552.6	666.6	ES20A		
380199.1	481657.9	664.9	ES20B		
380319.5	481706.1	668.7	ES21A		
380224.9	481733.9	666.1	ES21B		
380200.1	481746.3	665.2	ES22A		
380393.6	481864.4	668.7	ES23A		
380296.0	481857.1	666.5	ES23B		
380354.8	481743.6	669.7	ES24A		
380342.9	481646.6	670.2	ES24B		
380235.8	481857.7	665.3	ES25A		
380141.8	481862.4	663.9	ES25B		
380289.8	481947.2	665.5	ES26A		
380192.1	481937.1	663.7	ES26B		
380305.4	481682.7	668.9	ES27A		
380296.2	481802.4	667.6	ES27B		
380200.4	481668.8	665.3	ES28A		
380242.8	481781.2	666.4	ES28B		
380121.8	481635.7	664.2	ES29A		
380107.9	481753.9	663.7	ES29B		
376303.4	488741.7	678.8	JS40A		
376248.5	488825.5	678.8	JS40B		
376477.9	489602.7	700.0	LS1A		
376542.2	489604.2	699.7	LS1B		

ORKUSTOFNUN
VATNSORKUDEILD
81.02.10 GP

SPRENGIGIGAR SUNNAN LAUGARAR

HNITALISTI
Hnitakerfi: Lambert
BLAD 04

X-hnit (m)	Y-hnit (m)	Hxd (m)	Nafn punkts	Ath	Numer punkts
376485.3	489548.7	706.4	LS2A		
376550.5	489538.1	708.1	LS2B		
376432.0	489661.4	687.9	LS3A		
376484.4	489680.2	689.2	LS3B		
376436.3	489697.3	679.0	LS4A		
376533.2	489714.6	681.1	LS4B		
376665.3	488478.8	714.0	LS5A		
376593.3	488543.5	713.2	LS5B		
376646.4	488423.3	700.1	LS6A		
376576.3	488494.2	699.2	LS6B		
376580.5	488398.9	688.6	LS7A		
376515.5	488471.6	689.4	LS7B		
376304.0	488856.2	701.1	LS8A		
376254.0	488936.9	699.3	LS8B		
376280.8	488828.3	689.0	LS9A		
376236.8	488914.4	688.8	LS9B		

ORKUSTOFNUN
VATNSORKUDEILD
81.02.10 GP

SPRENGIGIGAR OFAN TEIGSBJARGS

HNITALISTI
Hnitakerfi: Lambert
BLAD 05

X-hnit (m)	Y-hnit (m)	Hæd (m)	Nafn punkts	Ath	Numer punkts
360719.1	504601.2	602.9	AS01A		
360707.6	504547.1	604.5	AS01B		
360626.4	504513.1	608.4	AS03A		
360897.1	505514.2	612.6	AS24A		
360952.0	505507.3	616.1	AS24B		
360925.0	505690.3	627.0	AS25A		
360978.8	505679.2	626.6	AS25B		
361000.8	505863.9	642.9	AS26A		
361360.7	506173.7	636.2	AS27B		
361419.0	506214.4	632.3	AS28A		
361466.5	506243.9	630.0	AS28B		
361539.7	506292.0	622.0	AS29A		
361569.0	506338.2	619.9	AS29B		
361722.0	506494.2	607.3	AS31A		
361759.8	506453.6	607.1	AS31B		
361870.0	506388.7	608.1	AS32B		
361801.4	506290.3	612.5	AS33B		
361749.5	506205.8	617.3	AS34B		
361663.8	506074.0	625.0	AS35B		

ORKUSTOFNUN
VATNSORKUDEILD
81.02.10 GP

SPRENGIGIGAR VID TEIGSHUS

HNITALISTI
Hnitakerfi: Lambert
BLAD 06

X-hnit (m)	Y-hnit (m)	Hæd (m)	Nafn punkts	Ath	Numer punkts
359930.0	503719.4	94.9	DS1A		
359856.9	503785.3	95.6	DS1B		
359816.8	503753.0	77.9	DS2B		
359824.8	503708.8	71.5	DS3A		
359876.2	503639.3	66.5	DS4A		
359829.7	503670.0	68.0	DS4B		
359821.3	503676.5	67.8	DS5A		
359744.3	503737.1	62.1	DS5B		
359802.2	503560.0	47.3	DS6A		
359728.5	503625.5	45.0	DS6B		
359716.3	503576.4	43.5	DS7A		
359664.9	503659.9	43.3	DS7B		
359733.7	503461.4	38.2	DS8A		
359679.9	503540.6	38.2	DS8B		
359623.1	503629.1	37.5	DS9A		
359555.9	503697.2	37.3	DS9B		
359705.3	503812.9	67.6	DS10A		
359625.3	503868.1	64.9	DS10B		
359656.1	503746.0	47.2	DS11A		
359582.7	503809.3	47.4	DS11B		
359463.6	503833.6	37.1	DS12A		
359367.5	503811.5	36.5	DS12B		
359217.2	503940.6	34.9	DS13A		
359186.1	504031.2	34.8	DS13B		
358475.1	504578.7	32.5	DS14A		
358410.8	504502.0	32.7	DS14B		
358717.9	504368.9	33.0	DS15A		
358623.6	504401.2	33.1	DS15B		
359074.5	504072.9	35.2	DS16A		
359006.1	504144.9	34.4	DS16B		
358801.8	504251.6	33.3	DS17A		
358714.0	504293.8	33.8	DS17B		

ORKUSTOFNUN
VATNSORKUDEILD
81.02.10 GP

GRYFJUR VID KRISTINARKIL

HNITALISTI
Hnitakerfi: Lambert
BLAD 07

X-hnit (m)	Y-hnit (m)	Hæd (m)	Nafn Punkts	Ath	Numer Punkts
364066.0	506665.8	612.7	GK1		
363945.9	506684.3	610.9	GK2		
363861.0	506724.3	608.8	GK3		
363694.6	506677.1	605.9	GK4		
363568.5	506589.0	605.3	GK5		
363505.5	506696.5	607.1	GK6		
363411.4	506726.2	607.7	GK7		
363324.3	506781.5	606.1	GK8		
363281.6	506927.5	607.3	GK9		
363126.9	507018.7	607.0	GK10		
363017.7	507056.3	608.8	GK11		
362885.3	507096.0	610.3	GK12		

ORKUSTOFNUN
VATNSORKUDEILD
81.02.10 GP

EYJABAKKAR (HÆLAR)

HNITALISTI
Hnitakerfi: Lambert
BLAD 08

X-hnit (m)	Y-hnit (m)	Hæð (m)	Nafn punkts	Ath	Numer punkts
378657.1	480862.4	657.3	CC123		
378565.1	480966.4	657.8	CC323		
378714.9	481088.5	658.7	CC325		
378991.6	481164.9	660.7	CC128		
380117.9	481758.2	663.8	CC240		
380317.2	481398.5	669.7	CE505		
379902.9	481627.6	661.8	CE701		
380105.2	481617.0	664.0	CE703		
380088.4	481722.4	663.5	CE803		
378041.5	480548.0	645.9	EC1		
377995.6	480528.3	646.1	EC2		
377949.7	480508.5	645.9	EC3		
377903.7	480488.7	645.7	EC4		
378081.0	480456.2	645.9	EC5		
378035.1	480436.4	645.9	EC6		
377989.2	480416.6	645.8	EC7		
377943.3	480396.9	645.9	EC8		
378120.6	480364.4	645.7	EC9		
378074.7	480344.6	645.7	EC10		
378028.8	480324.8	645.9	EC11		
377982.8	480305.0	645.7	EC12		

ORKUSTOFNUN

VATNSORKUDEILD

81.02.10 GP

HNITALISTI

Hnitakerfi: Lambert

BLAD 09

HÖLKNARVEITA (HÆLAR)

X-hnit (m)	Y-hnit (m)	Hæd (m)	Nafn Punkts	Ath	Numer Punkts
381267.0	497289.4	694.2	HS401		
381309.8	497320.2	693.6	HS501		
381352.7	497351.3	693.8	HS601		
381242.8	497396.4	695.5	HS502		
381288.3	497426.7	694.4	HS602		
381329.2	497452.9	695.2	HS702		
381176.8	497471.8	694.1	HS503		
381213.3	497506.0	694.1	HS603		
381245.0	497536.0	693.8	HS703		
381109.2	497548.6	696.5	HS504		
381157.4	497582.9	694.2	HS604		
381204.1	497613.6	694.0	HS704		
381045.4	497621.4	695.5	HS505		
381098.6	497657.4	694.6	HS605		
381138.5	497684.8	694.2	HS705		
380943.7	497667.5	696.1	HS406		
380967.2	497710.5	696.0	HS506		
380992.3	497756.2	696.1	HS606		
380733.3	497692.6	699.4	HS307		
380753.2	497734.7	698.7	HS407		
380771.1	497779.1	696.4	HS507		
380642.3	497719.9	699.2	HS308		
380659.7	497765.9	698.8	HS408		
380677.0	497812.0	700.0	HS508		
380532.3	497762.2	699.3	HS309		
380558.8	497805.0	696.5	HS409		
380583.1	497844.4	697.6	HS509		
380606.3	497880.4	704.0	HS609		
380468.7	497828.3	700.1	HS410		
380495.2	497874.7	697.0	HS510		
380519.5	497917.2	695.8	HS610		
380374.6	497872.3	698.9	HS411		
380394.6	497909.4	697.6	HS511		
380413.6	497953.4	696.1	HS611		
380301.7	497941.5	699.0	HS512		
380320.8	497987.1	698.4	HS612		
380340.1	498032.6	698.3	HS712		
380205.6	497974.2	697.0	HS513		
380215.5	498043.7	696.0	HS613		
380234.1	498092.4	695.2	HS713		
380147.7	497967.5	696.4	HS414		
380110.1	498006.7	695.0	HS514		
380073.9	498044.2	694.3	HS614		
380065.8	497897.5	696.4	HS415		
380022.0	497948.5	695.4	HS515		
379990.2	497985.7	695.3	HS615		
379981.4	497824.9	697.0	HS416		
379939.9	497894.4	696.0	HS516		
379916.3	497934.2	695.9	HS616		
379880.3	497787.8	697.0	HS417		

ORKUSTOFNUN
 VATNSORKUDEILD
 81.02.10 GP

HÖLKNARVEITA (HÆLAR)

HNITALISTI
 Hnitakerfi: Lambert
 BLAD 10

X-hnit (m)	Y-hnit (m)	Hæd (m)	Nafn Punkts	Ath	Numer Punkts
379856.0	497839.0	695.9	HS517		
379833.9	497886.0	695.0	HS617		
379765.8	497726.5	695.1	HS418		
379776.5	497786.4	693.2	HS518		
379785.1	497835.4	692.0	HS618		
379652.7	497699.8	695.5	HS319		
379664.7	497751.1	694.3	HS419		
379675.7	497800.1	693.1	HS519		
379559.0	497742.7	695.8	HS420		
379573.2	497813.9	694.2	HS520		
379584.1	497868.9	692.3	HS620		
379466.8	497828.4	695.6	HS521		
379467.6	497883.0	693.9	HS621		
379468.4	497934.7	692.2	HS721		
379368.2	497841.6	696.7	HS522		
379380.5	497893.4	694.6	HS622		
379391.8	497940.2	692.8	HS722		
379273.1	497785.7	696.8	HS423		
379274.3	497854.5	695.8	HS523		
379276.9	497924.7	693.6	HS623		
379185.3	497811.6	696.7	HS424		
379180.2	497867.3	695.8	HS524		
379175.2	497920.2	695.3	HS624		
379086.2	497825.0	696.5	HS425		
379085.3	497880.2	695.3	HS525		
379084.4	497932.6	694.4	HS625		
378952.1	497797.3	696.8	HS326		
378975.1	497842.4	695.8	HS426		
378985.4	497893.7	694.3	HS526		
378860.6	497832.3	695.6	HS327		
378876.6	497882.8	695.1	HS427		
378893.9	497936.7	694.5	HS527		
378796.2	497912.1	695.0	HS428		
378810.6	497975.8	694.0	HS528		
378822.2	498025.8	693.2	HS628		
378695.7	497974.7	694.6	HS429		
378717.7	498019.5	694.0	HS529		
378738.0	498060.9	693.1	HS629		
378608.6	498015.3	695.1	HS430		
378630.5	498060.4	694.0	HS530		
378655.6	498108.9	693.4	HS630		
378541.3	498101.3	694.7	HS531		
378574.4	498152.5	693.5	HS631		
378605.6	498200.7	692.7	HS731		
378443.8	498097.0	694.9	HS432		
378450.0	498145.0	694.9	HS532		
378456.4	498195.0	694.2	HS632		
378338.1	498094.9	695.3	HS433		
378343.8	498145.1	695.1	HS533		
378349.7	498197.9	693.9	HS633		

ORKUSTOFNUN
VATNSORKUDEILD
B1.02.10 GP

HÖLKNARVEITA (HÆLAR)

HNITALISTI
Hnitakerfi: Lambert
BLAD 11

X-hnit (m)	Y-hnit (m)	Hæd (m)	Nafn Punkts	Ath	Numer Punkts
378259.0	498095.2	694.5	HS434		
378246.9	498144.9	694.0	HS534		
378239.0	498202.3	693.8	HS634		
378146.7	498089.4	694.2	HS435		
378141.5	498144.7	693.5	HS535		
378136.2	498201.8	693.3	HS635		
378053.7	498086.4	694.0	HS436		
378045.2	498144.6	693.0	HS536		
378037.2	498201.0	692.4	HS636		
377962.8	498093.5	694.1	HS437		
377955.8	498144.5	692.8	HS537		
377948.5	498200.2	692.3	HS637		
377857.3	498085.8	694.9	HS438		
377853.8	498144.0	694.1	HS538		
377850.5	498199.3	692.3	HS638		
377755.7	498074.3	693.0	HS439		
377749.5	498146.0	691.6	HS539		
377744.3	498202.0	691.4	HS639		
377642.4	498097.9	691.3	HS440		
377647.2	498148.3	690.9	HS540		
377653.0	498203.1	690.8	HS640		
377538.4	498104.6	689.5	HS441		
377540.7	498150.6	689.4	HS541		
377543.5	498213.6	689.2	HS641		
377434.7	498096.6	687.6	HS442		
377437.9	498155.1	687.4	HS542		
377443.8	498227.3	687.0	HS642		

ORKUSTOFNUN

VATNSORKUDEILD

81.02.10 GP

SAUDARVEITA (HÆLAR)

HNITALISTI

Hnitakerfi: Lambert

BLAD 12

X-hnit (m)	Y-hnit (m)	Hæd (m)	Nafn punkts	Ath	Numer punkts
371701.0	473601.8	749.2	GV501		
371794.3	473560.3	746.1	GV502		
371915.0	473506.3	749.1	GV503		
371790.7	473335.3	744.8	GV504		
371889.9	473329.9	741.9	GV505		
371979.4	473325.1	737.6	GV506		
371924.7	473434.9	746.2	GV507		
372011.7	473495.6	741.3	GV508		
372093.7	473552.8	737.1	GV509		
372179.2	473613.1	737.6	GV510		
372263.8	473672.8	739.7	GV511		
372353.9	473620.0	737.6	GV512		
372446.4	473566.0	738.0	GV513		
372538.3	473508.5	741.8	GV514		
372521.9	473203.6	736.3	GV515		
372619.4	473179.9	738.2	GV516		
372721.6	473155.5	737.5	GV517		
372798.4	473137.3	736.0	GV518		
372862.8	473121.7	737.7	GV519		
374205.2	473439.0	698.3	KV501		
374302.0	473439.3	692.0	KV502		
374391.1	473439.5	698.9	KV503		
374495.8	473439.8	704.5	KV504		
374603.7	473440.2	697.8	KV505		
374708.2	473440.3	701.7	KV506		
374812.5	473440.6	704.6	KV507		
374920.7	473441.2	701.4	KV508		
374969.1	473492.5	701.9	KV509		
375033.4	473561.0	713.3	KV510		
374968.9	473279.1	701.9	KV511		
375067.9	473268.5	701.4	KV512		
375157.7	473316.9	701.3	KV513		
375227.2	473388.4	704.7	KV514		
375290.4	473453.0	708.4	KV515		
375481.1	473728.2	708.1	KV516		
375528.7	473819.4	707.8	KV517		
375587.2	473899.8	707.2	KV518		
375647.6	473980.2	705.7	KV519		
375707.9	474060.4	704.5	KV520		
375770.1	474143.3	705.2	KV521		
376005.7	474431.7	704.6	KV522		
376007.1	474531.7	702.4	KV523		
376105.9	474547.8	700.7	KV524		

ORKUSTOFNUN

VATNSORKUDEILD

81.02.10 GP

COBRA-BORHOLUR 1979

HNITALISTI

Hnitakerfi: Lambert

BLAD 13

X-hnit (m)	Y-hnit (m)	Hzd (m)	Nafn Punkts	Ath	Numer Punkts
380068.9	481853.1	662.8	SF204		
380034.3	481935.8	661.9	SF205		
380003.6	482020.2	660.2	SF206		
379927.0	482232.6	656.0	SF208		
379793.1	482336.5	653.2	SF109		
379879.7	482375.5	651.8	SF209		
379934.1	482398.3	652.7	SF309		
379717.0	482494.5	650.3	SF110		
379765.2	482519.4	652.5	SF210		
379813.4	482542.9	654.0	SF310		
379606.2	482698.4	644.7	SF111		
379658.7	482729.1	643.9	SF211		
379708.8	482763.8	646.8	SF311		
379615.3	482922.4	650.7	SF112		
379656.9	482945.2	651.0	SF212		
379700.3	482967.9	652.6	SF312		
379541.4	483086.1	649.3	SF113		
379582.6	483106.3	650.1	SF213		
379624.0	483127.7	651.3	SF313		
379562.2	483184.3	649.6	SF114		
379605.3	483206.4	651.0	SF214		
379648.8	483227.9	653.4	SF314		
379500.7	483351.9	644.9	SF115		
379547.4	483378.7	648.9	SF215		
379608.1	483413.1	654.2	SF315		
379436.2	483595.7	650.4	SF216		
379389.4	483573.5	649.0	SF316		
379480.2	483616.4	652.0	SF316		
379267.0	483783.6	649.9	SF117		
379309.3	483806.7	651.8	SF217		
379357.4	483832.3	655.3	SF317		
379193.1	483959.7	650.8	SF118		
379232.4	483987.0	653.7	SF218		
379272.2	484012.6	656.3	SF318		
379135.5	484144.4	652.5	SF119		
379177.5	484163.2	655.2	SF219		
379225.8	484184.0	658.3	SF319		
379096.3	484351.0	657.3	SF120		
379135.6	484385.2	659.7	SF220		
379171.7	484414.4	663.2	SF320		
378916.1	484509.7	657.1	SF121		
378949.1	484553.4	661.3	SF221		
378974.6	484588.1	664.8	SF321		
378814.0	484692.4	656.3	SF122		
378848.1	484724.2	663.6	SF222		
378881.5	484756.5	668.4	SF322		
378688.4	484851.3	654.4	SF123		
378708.2	484863.3	659.7	SF223		
378729.8	484875.5	662.9	SF323		
378589.2	485003.1	655.4	SF124		

ORKUSTOFNUN
VATNSÖRKUDEILD
81.02.10 GP

COBRA-BORHOLUR 1979

HNITALISTI
Hnitakerfi: Lambert
BLAD 14

X-hnit (m)	Y-hnit (m)	Hæd (m)	Nafn punkts	Ath	Numer punkts
378621.7	485023.3	658.5	SF224		
378653.1	485043.3	663.2	SF324		
378496.4	485165.6	655.8	SF125		
378537.8	485187.7	659.6	SF225		
378578.2	485208.4	666.7	SF325		
378398.0	485352.6	654.2	SF126		
378438.1	485375.8	661.2	SF226		
378477.4	485398.9	669.2	SF326		
378272.6	485524.0	647.7	SF127		
378312.9	485546.8	655.1	SF227		
378353.9	485569.3	663.5	SF327		
378157.2	485688.8	646.8	SF128		
378203.1	485713.5	653.2	SF228		
378248.4	485738.2	661.2	SF328		
378060.4	485876.6	650.4	SF129		
378104.5	485898.7	657.2	SF229		
378147.0	485919.8	664.5	SF329		
377925.9	486050.3	649.1	SF130		
377966.3	486077.9	656.3	SF230		
377786.6	486212.1	650.4	SF131		
377829.1	486244.5	657.2	SF231		
377867.9	486272.7	663.9	SF331		
377621.1	486398.2	648.5	SF132		
377669.0	486421.6	654.1	SF232		
377713.8	486444.7	660.7	SF332		
377531.6	486582.6	649.0	SF133		
377575.6	486613.2	652.8	SF233		
377617.3	486641.4	658.9	SF333		
377436.5	486782.0	652.0	SF134		
377473.8	486819.1	653.0	SF234		
377279.4	486972.4	652.5	SF135		
377319.4	487007.3	651.5	SF235		
377042.8	487087.3	652.2	SF136		
377069.9	487130.6	652.7	SF236		
377096.4	487173.2	652.5	SF336		
376858.7	487152.9	651.6	SF137		
376890.0	487195.2	652.7	SF237		
376919.8	487233.8	652.7	SF337		
376743.5	487323.9	651.0	SF138		
376779.7	487354.3	652.1	SF238		
376659.1	487507.4	649.1	SF139		
376707.3	487556.4	648.5	SF239		
376740.0	487590.4	649.9	SF339		
376599.9	487738.8	650.0	SF140		
376629.5	487769.9	649.6	SF240		
376682.3	487826.5	653.8	SF340		
376496.7	487896.8	649.5	SF141		
376525.7	487928.1	649.7	SF241		
376600.8	488010.7	656.4	SF341		
376472.0	488111.7	650.5	SF142		

ORKUSTOFNUN

VATNSORKUDEILD

81.02.10 GP

COBRA-BORHOLUR 1979

HNITALISTI

Hnitakerfi: Lambert

BLAD 15

X-hnit (m)	Y-hnit (m)	Hæd (m)	Nafn punkts	Ath	Numer punkts
376507.5	488137.2	655.5	SF242		
376548.7	488166.5	660.8	SF342		
376374.5	488291.0	650.5	SF143		
376402.9	488310.2	655.8	SF243		
376430.0	488333.8	664.0	SF343		
376269.8	488460.0	653.6	SF144		
376303.5	488480.0	657.7	SF244		
376337.1	488501.9	663.8	SF344		
376239.1	488638.7	658.8	SF245		
376272.1	488654.9	665.7	SF345		
376098.6	488775.3	648.5	SF146		
376150.2	488789.0	654.7	SF246		
376189.6	488799.1	662.0	SF346		
376017.5	488934.9	644.9	SF147		
376058.3	488947.9	649.9	SF247		
376097.3	488960.5	659.8	SF347		
375911.5	489148.8	640.5	SF148		
375952.1	489164.2	646.6	SF248		
375981.6	489175.4	652.7	SF348		
375871.9	489355.2	638.2	SF149		
375904.5	489361.0	644.7	SF249		
375932.1	489366.7	651.7	SF349		
375841.7	489543.2	636.1	SF150		
375869.2	489548.3	641.9	SF250		
375891.3	489552.3	647.5	SF350		
375843.0	489688.6	637.1	SF151		
375861.2	489687.5	646.7	SF251		
375876.9	489689.4	653.5	SF351		
375864.1	489811.5	642.5	SF152		
375893.3	489804.3	653.6	SF252		
375931.8	489790.8	661.4	SF352		
376047.6	489842.7	651.8	SF153		
376048.2	489808.3	658.4	SF253		
376056.8	489770.9	664.5	SF353		
376190.2	489937.7	651.1	SF154		
376231.7	489869.7	656.9	SF254		
376270.4	489806.7	661.4	SF354		
376395.6	489958.8	656.7	SF355		
376316.8	490075.1	651.4	SF155		
376357.3	490016.7	653.8	SF255		
376112.5	481934.8	629.7	CH1		
376204.0	481895.6	629.2	CH2		
376286.5	481796.8	627.4	CH3		
376384.1	481754.4	623.3	CH4		
376462.5	490319.9	651.4	CL1		
376419.1	490418.0	652.2	CL2		
376350.5	490513.3	653.5	CL3		
376293.8	490610.4	653.8	CL4		
376252.4	490705.9	653.5	CL5		
376222.2	490817.9	652.8	CL6		

ORKUSTOFNUN

VATNSORKUDEILD

81.02.10 GP

COBRA-BORHOLUR 1979

HNITALISTI

Hnitakerfi: Lambert

BLAD 16

X-hnit (m)	Y-hnit (m)	Hæd (m)	Nafn punkts	Ath	Numer punkts
376153.5	490926.9	652.6	CL7		
376109.9	491024.0	652.2	CL8		
376046.0	491129.6	652.0	CL9		
375982.4	491229.1	652.0	CL10		
375914.9	491327.6	649.0	CL11		
375853.3	491421.6	652.2	CL12		
375828.3	491535.2	652.3	CL13		
375796.6	491645.5	651.9	CL14		
375763.3	491757.7	652.0	CL15		
375737.9	491870.1	651.5	CL16		
375710.3	491990.6	651.7	CL17		
375683.7	492109.4	651.1	CL18		
375653.9	492241.3	650.6	CL19		
375621.7	492395.3	652.0	CL20		
375558.0	492482.7	652.3	CL21		
375478.9	492571.2	650.8	CL22		
375398.3	492665.3	650.7	CL23		
375317.9	492749.3	651.1	CL24		
375233.3	492838.2	651.9	CL25		
375152.9	492920.6	652.6	CL26		
375083.5	493025.4	652.1	CL27		
375016.8	493126.7	652.2	CL28		
374955.4	493218.3	652.5	CL29		
374891.7	493316.4	652.6	CL30		
374822.6	493415.8	653.0	CL31		
374759.8	493505.0	653.4	CL32		
374693.9	493599.6	652.7	CL33		
374634.2	493709.2	652.8	CL34		
374539.1	493875.5	651.9	CL35		
374057.4	495351.1	652.7	CL36		
374005.8	495191.2	654.0	CL37		
374049.3	495036.0	654.1	CL38		
374106.2	494874.1	654.1	CL39		
374152.2	494714.2	653.5	CL40		
374204.4	494626.4	652.6	CL41		
373645.3	496240.2	650.5	CL42		
373643.9	496295.6	650.9	CL43		
373617.5	496399.1	650.9	CL44		
373436.6	496924.0	650.9	CL45		
373403.5	496950.5	651.1	CL46		
373362.8	496984.3	651.1	CL47		
373264.5	497159.7	651.2	CL48		
373053.8	497456.9	651.7	CL49		
373103.5	497536.6	651.7	CL50		
373144.3	497630.0	652.4	CL51		
373065.9	497696.1	652.2	CL52		
373040.4	497829.7	653.3	CL53		
372961.8	497952.8	654.3	CL54		
372862.0	498064.5	655.6	CL55		
372794.8	498184.5	655.8	CL56		

ORKUSTOFNUN

VATNSORKUDEILD

81.02.10 GP

HNITALISTI

Hnitakerfi: Lambert

BLAD 17

COBRA-BORHOLUR 1979

X-hnit (m)	Y-hnit (m)	Hæd (m)	Nafn Punkts	Ath	Numer Punkts
372686.3	498245.0	656.5	CL57		
372635.9	498318.9	656.6	CL58		
372612.9	498434.5	656.9	CL59		
372589.5	498513.2	657.1	CL60		
372547.3	498593.8	657.9	CL61		
372485.5	498663.2	657.9	CL62		
372457.4	498731.0	657.8	CL63		
372366.9	498774.1	657.5	CL64		
372150.8	498820.0	652.6	CL66		
372066.4	498868.8	651.2	CL67		
371824.1	499145.4	651.2	CL68		
371799.3	499168.3	651.4	CL69		
371744.3	499203.9	651.3	CL70		
371674.3	499231.4	650.6	CL71		
371089.5	500455.7	650.3	CL72		
371073.6	500546.1	650.3	CL73		
371012.6	500624.2	650.2	CL74		
371011.4	500722.6	650.2	CL75		
371047.4	500835.8	650.0	CL76		
370967.3	500907.4	650.9	CL77		
370891.2	500963.0	650.6	CL78		
370810.5	501019.0	650.3	CL79		
370814.3	501106.2	650.7	CL80		
370761.1	501190.6	650.4	CL81		
370664.5	501263.4	650.2	CL82		
370633.7	501347.0	649.9	CL83		
370625.5	501442.1	650.1	CL84		
370615.9	501526.6	649.9	CL85		
370623.8	501605.0	649.6	CL86		
370411.5	502103.7	649.2	CL87		
370378.3	502192.9	649.7	CL88		
370336.8	502235.1	650.0	CL89		
370303.0	502298.8	650.0	CL90		
370147.4	502542.7	640.2	CL91		
370080.5	502609.2	640.0	CL92		
370023.1	502703.0	640.0	CL93		
369951.7	502775.3	639.7	CL94		
369861.5	502773.3	638.9	CL95		
369784.0	502793.8	638.6	CL96		
369682.4	502780.4	637.4	CL97		
369587.4	502754.4	635.7	CL98		
369458.4	502894.0	631.1	CL99		
369362.3	502908.7	630.8	CL100		
369286.9	502946.1	629.7	CL101		
369221.0	502947.2	629.0	CL102		
369116.8	502921.7	627.7	CL103		

ORKUSTOFNUN
 VATNSORKUDEILD
 81.02.10 GP

STÖÐVAR SUNNAN LAUGARAR

HNITALISTI
 Hnitakerfi: Lambert
 BLAD 18

X-hnit (m)	Y-hnit (m)	Hæd (m)	Nafn punkts	Ath	Numer punkts
377785.1	480695.2	644.9	5443		5443
377624.4	474752.2	726.3	MH		5455
376151.1	479966.5	689.4	EYB		5801
380820.9	479645.1	720.8	SNF		5802
379047.6	484395.6	658.7	HAF		5804
374016.9	485423.5	661.9	RGN		5806
378434.8	481059.3	659.7	M5		
380681.1	481453.5	684.9	M7		
375261.8	491066.7	641.7	M9		
376919.6	487345.6	663.0	JP2		
377449.9	479885.8	666.2	EB5		
377777.4	480230.1	654.5	GV7		
378256.4	480625.9	656.4	GT4		
378582.5	480509.5	661.0	GT5		
379289.6	481383.7	661.0	EB2		
380033.1	482272.7	655.6	AG8		
378896.1	484605.6	661.3	B1		
376615.3	488464.5	701.3	LF2		
376297.8	488769.1	682.2	LF3		
376483.8	489625.2	699.1	GT3		
376442.2	490204.8	651.3	5444		
378705.3	484870.1	659.7	B2		
378449.6	485224.6	654.1	B4		
378152.3	485636.7	643.7	B5		
377847.0	486059.9	645.3	B6		
377638.7	486348.7	648.3	B7		
377340.3	486762.4	650.3	B8		
377072.3	487133.8	652.9	B9		
376288.6	488439.3	655.0	A6		
376692.4	487739.3	652.9	AB		
379967.3	482721.9	658.2	JP3		
379678.1	483248.2	654.4	D2		
379433.3	483693.7	653.1	D3		
379236.5	484051.8	656.0	D4		

ORKUSTOFNUN
 VATNSORKUDEILD
 81.02.10 GP

STÖÐVAR NORDAN LAUGARAR

HNITALISTI
 Hnitakerfi: Lambert
 BLAD 19

X-hnit (m)	Y-hnit (m)	Hzd (m)	Nafn punkts	Ath	Numer punkts
378378.4	496530.3	881.5	THR		
366958.8	503604.6	640.9	GVS		
364735.3	505989.3	638.9	HVA		
370817.7	499118.9	666.0	SAL		
374673.6	494661.8	664.7	STL		
372169.8	497134.8	648.7	5876		
372660.4	494863.6	647.2	5877		
374581.3	493015.9	653.6	5878		
376442.2	490204.8	651.3	5444		
376483.8	489625.2	699.1	GT3		
376434.0	490314.9	651.6	X245		
374222.9	493611.6	652.3	AG3		
373772.9	493726.6	649.1	AG4		
373334.3	494223.9	649.4	AG5		
373939.1	494982.4	654.4	AG6		
372491.3	495804.7	640.5	GT2		
373432.4	496572.2	654.4	GT6		
371395.0	497916.9	647.9	GT8		
372705.5	497372.9	652.3	X140		
372243.9	497709.3	654.9	AG7		
370592.3	498412.9	647.8	GT9		
370025.4	499097.5	643.1	X826		
370078.5	501521.2	651.6	X104		
371615.8	498472.4	655.5	GT15		
368798.4	501135.4	638.2	LC		
369100.6	501019.3	640.2	GT14		
375241.2	493028.8	658.8	FB1		
376252.4	490705.9	653.5	CL5		
376046.2	491179.6	651.9	FA2		
375842.6	491647.4	653.1	FA3		
375658.9	492069.3	650.3	FA4		
375454.4	492539.1	650.0	FA5		
375327.4	492830.8	655.0	FA6		
366958.8	503604.6	640.9	GVS		
364735.3	505989.3	638.9	HVA		
370817.7	499118.9	666.0	SAL		
368798.4	501135.4	638.2	LC		
360480.5	506403.0	695.2	THVR		
361758.9	506895.3	606.2	5429		
364061.1	508726.7	636.3	GAL		
362730.9	503985.7	644.8	HBJ		
361509.6	506087.4	634.8	7016		
360891.6	504863.5	625.3	7015		
361584.1	506401.1	618.3	AG1		
360585.5	504548.3	609.1	AG2		
360313.2	504425.2	572.5	GT1		
366417.0	504305.4	635.0	GT16		
363664.2	506280.8	610.1	GT17		
364778.4	503500.3	612.9	GT18		
360336.2	504404.5	572.5	FV1		

ORKUSTOFNUN

VATNSORKUDEILD

81.02.10 GP

HNITALISTI

Hnitakerfi: Lambert

BLAD 20

STÖÐVAR NORDAN LAUGARAR

X-hnit (m)	Y-hnit (m)	Hæð (m)	Nafn punkts	Ath	Numer punkts
360739.2	505286.9	609.3	FV2		
361016.5	505916.8	644.7	FV3		
361313.6	506145.7	637.8	FV4		
360621.7	504554.8	607.3	FV5		
360145.9	504325.1	497.4	FV6		
365075.8	506041.9	636.2	5866		
358129.8	504902.4	47.8	5624		
359693.1	503610.5	44.1	GT19		
358129.8	504902.4	47.8	5624		
359693.1	503610.5	44.1	GT19		
378378.4	496530.3	881.5	THR		
379705.4	492519.4	709.6	SFN		
384776.2	499253.2	737.1	GT7		
382952.1	497173.1	704.1	M		
380613.8	497861.1	703.9	GT10		
377982.6	497947.5	703.5	GT11		
378445.0	492067.7	675.4	GT12		
378943.2	491083.1	678.7	GT13		

ORKUSTOFNUN

VATNSORKUDEILD

B1.02.10 GP

HNITALISTI

Hnitakerfi: Lambert

BLAD 21

STÖÐVAR VID SAUÐARVEITU

X-hnit (m)	Y-hnit (m)	Hæd (m)	Nafn punkts	Ath	Numer punkts
377624.4	474752.2	726.3	MH	3B	5455
0.0	0.0	725.0	MH/60	M	
368648.7	473031.0	810.9	7008	4BM	7008
0.0	0.0	810.5	7008/30	N	
375557.4	473245.8	752.3	7009	4B	7009
375541.6	473242.6	751.5	7009/60	RM	
373101.5	473250.3	750.4	M69	4RM	
370878.3	473285.8	793.9	M67	4RM	
0.0	0.0	820.2	M60	RM	
364207.2	473082.9	875.8	M61	RM	
0.0	0.0	874.2	M62	RM	
365718.1	473062.5	802.9	M63	RM	
367175.8	473087.0	803.7	M64	RM	
368642.2	475411.9	778.4	M65	RM	
0.0	0.0	825.0	M66	RM	
0.0	0.0	767.4	M68	RM	
0.0	0.0	775.4	M70	RM	
0.0	0.0	748.9	M71	RM	
0.0	0.0	752.0	N72	N	
377253.9	472796.1	705.7	N73	N	
377376.5	471185.0	755.8	M74	RM	
368803.6	472182.2	806.4	GV1		
0.0	0.0	814.1	GV2		
367369.3	472833.5	800.7	GV3		
371830.8	473400.7	750.4	GV4		
372612.8	474449.0	764.1	GV5		
375485.2	473354.7	747.9	GV6		
374391.1	473439.5	698.9	K503		
365585.8	473281.9	805.7	S513		
366050.5	473462.2	800.1	S518		
367718.0	472756.0	792.4	SS507		
376005.7	474431.7	704.6	KV522		